



Chipsmall Limited consists of a professional team with an average of over 10 year of expertise in the distribution of electronic components. Based in Hongkong, we have already established firm and mutual-benefit business relationships with customers from,Europe,America and south Asia,supplying obsolete and hard-to-find components to meet their specific needs.

With the principle of “Quality Parts,Customers Priority,Honest Operation,and Considerate Service”,our business mainly focus on the distribution of electronic components. Line cards we deal with include Microchip,ALPS,ROHM,Xilinx,Pulse,ON,Everlight and Freescale. Main products comprise IC,Modules,Potentiometer,IC Socket,Relay,Connector.Our parts cover such applications as commercial,industrial, and automotives areas.

We are looking forward to setting up business relationship with you and hope to provide you with the best service and solution. Let us make a better world for our industry!



Contact us

Tel: +86-755-8981 8866 Fax: +86-755-8427 6832

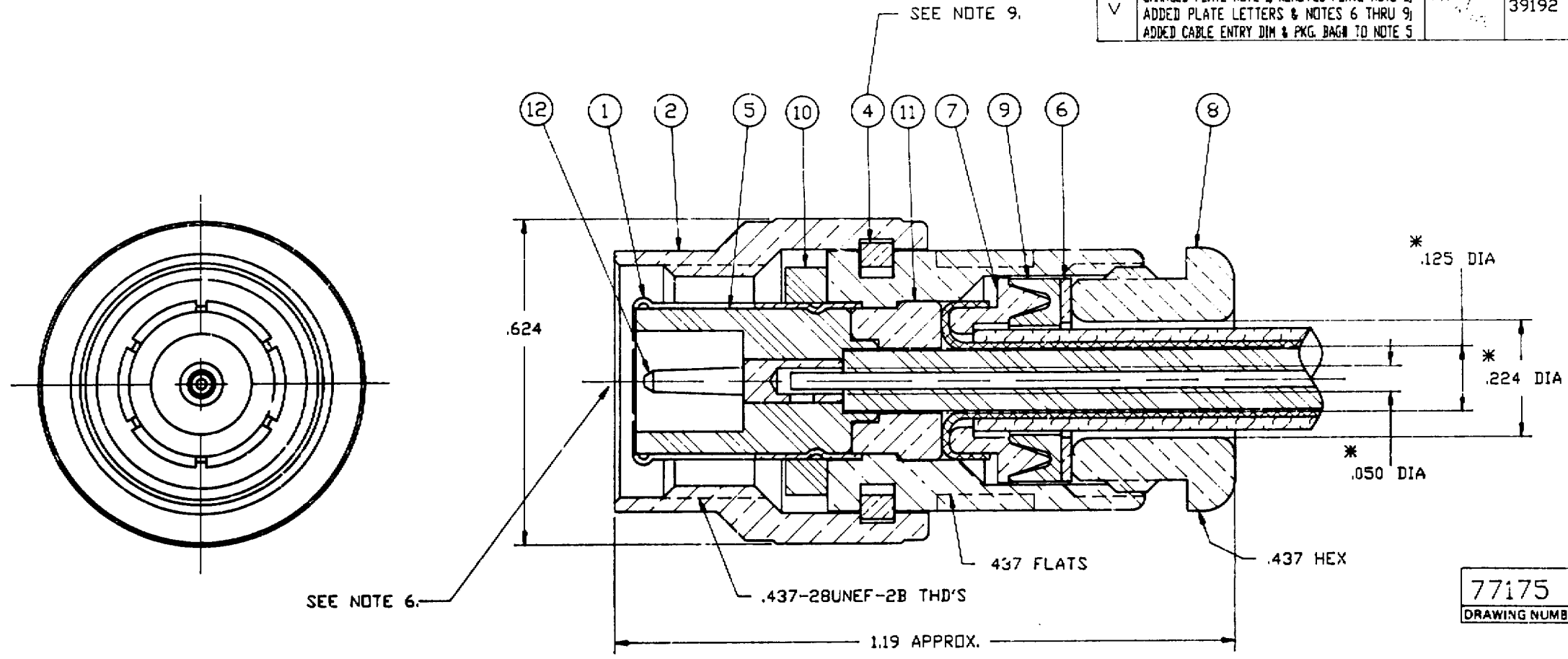
Email & Skype: info@chipsmall.com Web: www.chipsmall.com

Address: A1208, Overseas Decoration Building, #122 Zhenhua RD., Futian, Shenzhen, China



DO NOT SCALE THIS DRAWING

REVISIONS				
SYM	DESCRIPTION	DATE	E.C.O. NO.	APPR.
A	OFFICIAL ENG. RELEASE TO MFG.	2-27-68	2855	
U	REDRAWN - REMOVED BODY 78005 & OUTER CONTACT 31-11221; ADDED S/A 31-12300.	8/891	38315	DR
V	CHANGED PLATE NOTE 1; REMOVED PLATE NOTE 2; ADDED PLATE LETTERS & NOTES 6 THRU 9; ADDED CABLE ENTRY DIM & PKG. BAG TO NOTE 5		39192	DR



77175
DRAWING NUMBER ISSUE

NOTES:

1. PLATING MUST CONFORM TO AMPHENOL SPEC. 349-50560. CONTACT IS SILVER PLATED, ALL OTHER METAL PARTS ARE ASTROPLATED (REF).
2. 1500V RMS HI-POT.
3. FOR WIRE HOLES SEE 76175.
4. U.L. RECOGNIZED ITEM - NO CHANGES ARE PERMITTED WHICH AFFECT CATALOG SPECIFICATIONS.
5. PACKAGE IN BAG 999-226. MARK PACKAGING BAG 'RJ 5A 500V'.
6. MUST CONFORM TO AMPHENOL SPEC. 349-50551, SEC. 313. OMIT REFERENCE TO CONTACT.
7. ASTERISK (*) INDICATES CABLE ENTRY DIM'S.
8. ITEMS 6, 7, 8, 9 & 12 WILL BE PACKAGED LOOSE.
9. WAX DIP BEFORE ASSY.

PART NO.	QUAN	UOM	DESCRIPTION	CODE	FINISH
31-1429 F	1		12 CONTACT		NOTE 1
78010-H	1		11 BUSHING		NOTE 1
78554	1		10 GASKET		
82-1536-5	1		9 CLAMP GASKET		
31-1428-1H	1		8 CLAMP NUT		NOTE 1
82-1551-9H	1		7 BRAID CLAMP		NOTE 1
82-946-28H	1		6 WASHER		NOTE 1
78007	1		5 INSULATOR		
82-1138-4	1		4 RETAINING RING		
79626-H	1		2 COUPLING NUT		NOTE 1
31-12300-G	1		1 BODY/OUTER CONTACT S/A		NOTE 1

H:\DEPT\611\TNC\000\ASSY\77175

<p>REMOVE ALL BURRS, BREAK CORNERS AND SHARP EDGES TO MAXIMUM UNLESS OTHERWISE SPECIFIED</p> <p>NOTICE - These drawings, specifications, or other data (1) are, and remain the property of Amphenol Corp. (2) must be returned upon request and (3) are confidential and are not to be disclosed to any person other than those to whom they are given by Amphenol Corp. The furnishing of these drawings, specifications, or other data by Amphenol Corp., or by any other person to anyone for any purpose is not to be regarded by implication or otherwise as in any manner licensing, granting rights or admitting such holder or any other person to manufacture, use or sell any product, process or design patented or otherwise, that may in any way be related to or disclosed by drawings, specifications or other data.</p>	<p>UNLESS OTHERWISE SPECIFIED DIMENSIONS ARE IN INCHES. TOLERANCES NOT OTHERWISE SPECIFIED ARE:</p> <p>3 PLACE DECIMAL ± .010 (0.254 mm)</p> <p>3 PLACE DECIMAL ± .005 (0.127 mm)</p> <p>ANGLES ± 10°</p>	<p>DRAWN BY TERRI ALBERA 7-15-91</p> <p>CHECKED D. ROYCE 8-1-91</p> <p>ENGINEER D. ROYCE 8-1-91</p> <p>QUALITY ASSURANCE Z. KAMINSKI 8/7/91</p> <p>MFG. ENG. H. FREDLUND 8-2-91</p>	<p>DATE</p> <p>DATE</p> <p>DATE</p> <p>DATE</p> <p>DATE</p>	<p>TITLE</p> <p>TNC PLUG FOR RG58/U CABLE</p>	<p>Amphenol Corporation</p> <p>RF/Microwave Operations Danbury, Conn. U.S.A.</p>	
	<p>NEXT ASSY</p> <p>USED ON</p>	<p>REFERENCE DRAWING NO</p>	<p>CODE IDENTIFICATION</p> <p>74868</p>	<p>DRAWING SIZE</p> <p>C</p>	<p>DRAWING NO.</p> <p>77175</p>	<p>SCALE 6:1</p> <p>SHEET</p> <p>OF</p>
	<p>MATERIAL</p> <p>SPECIFICATION</p> <p>FINISH</p>	<p>FINISH</p>	<p>DATE</p> <p>8-2-91</p>	<p>DATE</p> <p>8-2-91</p>	<p>DATE</p> <p>8-2-91</p>	<p>ISSUE</p> <p>V</p>
	<p>SCALE 6:1 SHEET OF</p>					