



Chipsmall Limited consists of a professional team with an average of over 10 year of expertise in the distribution of electronic components. Based in Hongkong, we have already established firm and mutual-benefit business relationships with customers from,Europe,America and south Asia,supplying obsolete and hard-to-find components to meet their specific needs.

With the principle of "Quality Parts,Customers Priority,Honest Operation,and Considerate Service",our business mainly focus on the distribution of electronic components. Line cards we deal with include Microchip,ALPS,ROHM,Xilinx,Pulse,ON,Everlight and Freescale. Main products comprise IC,Modules,Potentiometer,IC Socket,Relay,Connector.Our parts cover such applications as commercial,industrial, and automotives areas.

We are looking forward to setting up business relationship with you and hope to provide you with the best service and solution. Let us make a better world for our industry!



## Contact us

Tel: +86-755-8981 8866 Fax: +86-755-8427 6832

Email & Skype: [info@chipsmall.com](mailto:info@chipsmall.com) Web: [www.chipsmall.com](http://www.chipsmall.com)

Address: A1208, Overseas Decoration Building, #122 Zhenhua RD., Futian, Shenzhen, China



PART NO.	ENG. NO.
02-09-1122	2273-A(P901)
02-09-1123	2273-A(P901L)
	-
	-
	-
	-
	-
	-

### LEGEND

2273-A(\*\*\*\*)\*

FORM  
BLANK=CHAIN  
L=LOOSE

P=PREPLATE  
BLANK=POSTPLATE

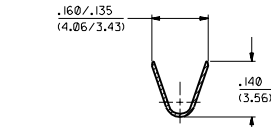
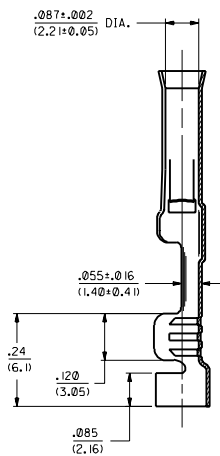
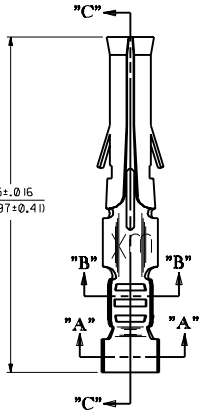
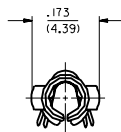
FINISH CODE

### NOTES:

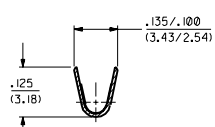
1. TERMINAL FOR USE WITH .093/(2.36) SERIES HOUSINGS AND WILL ACCEPT 18 THRU 22 AWG WIRE.
2. INSERTION FORCE: 2.0 LBS. AVG. WHEN TERMINAL IS INSERTED INTO AN .093 SERIES HOUSING.
3. CONTACT RETENTION: 20 LBS. MIN.
4. THIS PART CONFORMS TO PRODUCT SPEC. 02-09.

### FINISH CODES:

901 HOT TIN DIP .000020/(0.0005) MIN.



SECTION "A-A"



SECTION "B-B"

SECTION "C-C"

### MATERIAL NOTES:

1. CARTRIDGE BRASS, ALLOY \*C26000  
.008/(0.20) THICK, SPRING TEMPER

CHAIN FORM  
FULL SCALE



DIMENSIONS SHOWN IN PARENTHESES ARE IN PARENTHESES		MFG. SHL. REV. LTR.		REVISE ONLY ON CAD SYSTEM	
TITLE		REV. 1		DATE	
CRIMP TERM., FEMALE		2/10/94		10/11/94	
.093/(2.36) DIA.		2/10/94		10/11/94	
FOR 18 THRU 22 AWG WIRE		2/10/94		10/11/94	
MOLEX INCORPORATED		2/10/94		10/11/94	
PART NO.		REV. NO.		DATE	
SD-2273-A		1		10/11/94	
SEE CHART		SD-2273-A		10/11/94	
FILE NAME		SCALE		SIZE	
S02273X1		6 ± 1		CP	
APPROV. GWF		SCALE		SIZE	
1/01		6 ± 1		CP	