



Chipsmall Limited consists of a professional team with an average of over 10 year of expertise in the distribution of electronic components. Based in Hongkong, we have already established firm and mutual-benefit business relationships with customers from,Europe,America and south Asia,supplying obsolete and hard-to-find components to meet their specific needs.

With the principle of "Quality Parts,Customers Priority,Honest Operation,and Considerate Service",our business mainly focus on the distribution of electronic components. Line cards we deal with include Microchip,ALPS,ROHM,Xilinx,Pulse,ON,Everlight and Freescale. Main products comprise IC,Modules,Potentiometer,IC Socket,Relay,Connector.Our parts cover such applications as commercial,industrial, and automotives areas.

We are looking forward to setting up business relationship with you and hope to provide you with the best service and solution. Let us make a better world for our industry!



Contact us

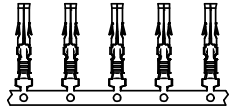
Tel: +86-755-8981 8866 Fax: +86-755-8427 6832

Email & Skype: info@chipsmall.com Web: www.chipsmall.com

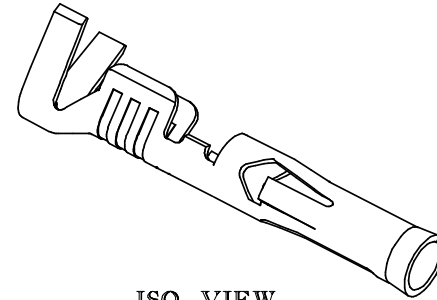
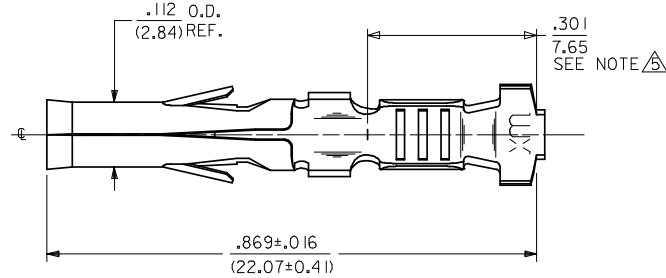
Address: A1208, Overseas Decoration Building, #122 Zhenhua RD., Futian, Shenzhen, China



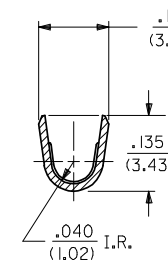
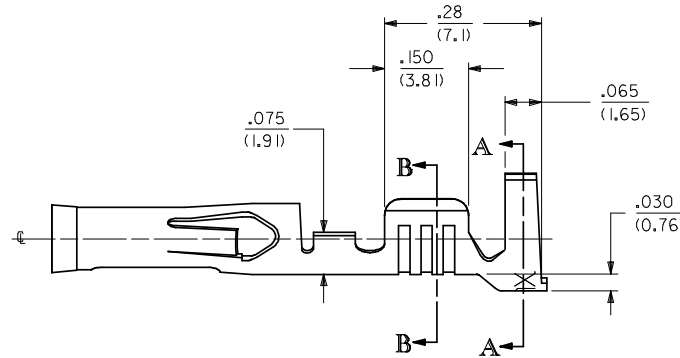
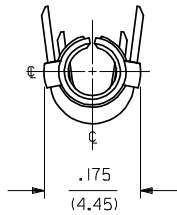
PART NO.	ENG. NO.	FORM
02-09-1615	42477-0005	CHAIN



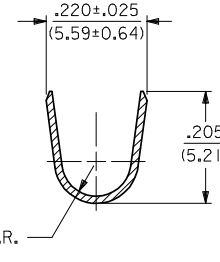
CHAIN FORM SHOWN
FULL SCALE



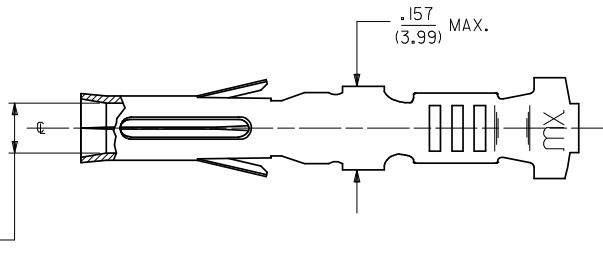
ISO VIEW



SECT. B-B



SECT. A-A



NOTES:

1. MATERIAL: 70/30 CARTRIDGE BRASS PER ES-124-D209.
2. FINISH: HOT TIN DIP, .000080/(0.00203) TO .000020/(0.00051) THICK.
3. PRODUCT SPECIFICATION PSX-42477 APPLIES.
4. THESE TERMINALS ARE FOR USE WITH .093/(2.36) SERIES HOUSINGS AND ACCEPT #14 THRU #18 AWG WIRE WITH A MAXIMUM INSULATION DIAMETER OF .140/(3.56).

△ DIMENSION FROM THE END OF TERMINAL TO THE END OF THE BRUSH ON THE WIRE CRIMPED INTO THE TERMINAL.

REVISE NOTE 2 EC NO: UCP2009-0059 DRAWN: GAVERILL 2008/07/08 CHKD: JBELL 2008/07/10 APPR: FSM/TH 2008/07/10	DESCRIPTION REV	QUALITY SYMBOLS ▽=0 ▽=0	GENERAL TOLERANCES (UNLESS SPECIFIED)		DIMENSION STYLE IN/MM		SCALE 6:1	DESIGN UNITS INCH	THIRD ANGLE PROJECTION	
			mm	INCH	DRAWN BY GMC	DATE 1989/06/21	TITLE TERMINAL, SOCKET .093/(2.36) DIA., CRIMP FOR 14-18 AWG			
G1			4 PLACES	± .010	± .010	CHECKED BY RHR	DATE 1989/06/21	MOLEX MOLEX INCORPORATED		
			3 PLACES	± .025	± .014	APPROVED BY GWF	DATE 1989/06/21			
			1 PLACE	± 0.35	± .014			MATERIAL NO. 02-09-1615		
			ANGULAR ±1/2°				DOCUMENT NO. SD-42477-****		SHEET NO. 1 OF 1	
			DRAFT WHERE APPLICABLE MUST REMAIN WITHIN DIMENSIONS		THIS DRAWING CONTAINS INFORMATION THAT IS PROPRIETARY TO MOLEX INCORPORATED AND SHOULD NOT BE USED WITHOUT WRITTEN PERMISSION					

