



Chipsmall Limited consists of a professional team with an average of over 10 year of expertise in the distribution of electronic components. Based in Hongkong, we have already established firm and mutual-benefit business relationships with customers from,Europe,America and south Asia,supplying obsolete and hard-to-find components to meet their specific needs.

With the principle of “Quality Parts,Customers Priority,Honest Operation,and Considerate Service”,our business mainly focus on the distribution of electronic components. Line cards we deal with include Microchip,ALPS,ROHM,Xilinx,Pulse,ON,Everlight and Freescale. Main products comprise IC,Modules,Potentiometer,IC Socket,Relay,Connector.Our parts cover such applications as commercial,industrial, and automotives areas.

We are looking forward to setting up business relationship with you and hope to provide you with the best service and solution. Let us make a better world for our industry!



Contact us

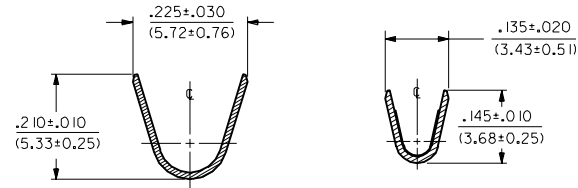
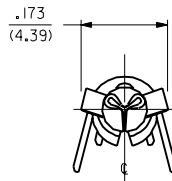
Tel: +86-755-8981 8866 Fax: +86-755-8427 6832

Email & Skype: info@chipsmall.com Web: www.chipsmall.com

Address: A1208, Overseas Decoration Building, #122 Zhenhua RD., Futian, Shenzhen, China



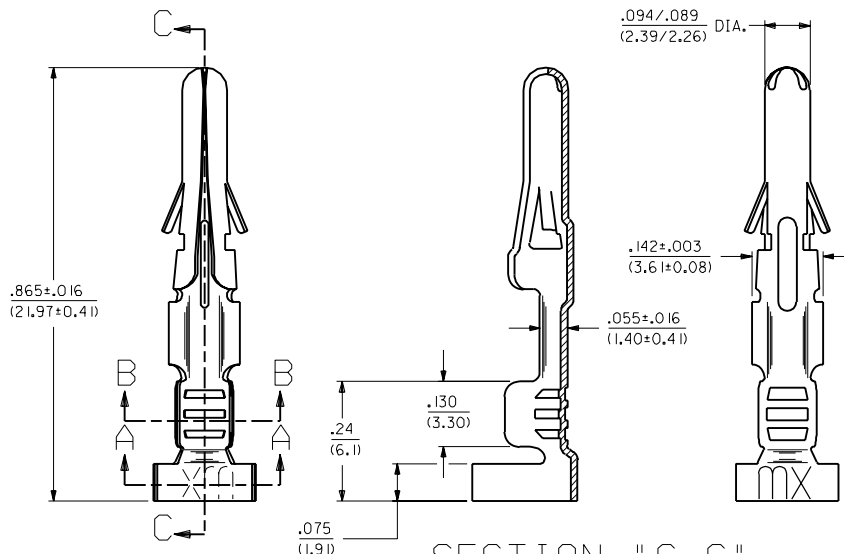
PART NO.	ENG. NO.
02-09-2111	7239-(P901)
02-09-2112	7239-(P901)L
	-
	-
	-



SECTION "A-A" SECTION "B-B"

LEGEND
7239-(****)*
P=PREPLATE
BLANK=POSTPLATE
FORM
BLANK=CHAIN
L=LOOSE
FINISH CODE

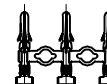
NOTES:
1. TERMINAL FOR USE WITH .093/(2.36) SERIES HOUSINGS AND WILL ACCEPT 14 THRU 18 AWG WIRE.
2. THIS PART CONFORMS TO PROD. SPEC. 02-09.



MATERIAL:
CARTRIDGE BRASS, ALLOY #C26000,
.013/(0.33) THICK, SPRING TEMPER.

FINISH CODES:
901 HOT TIN DIP .000020/(0.00051) MIN.

CHAIN FORM
FULL SCALE



DIMENSIONS SHOWN (METRIC) INCH		UNLESS OTHERWISE SPECIFIED TOLERANCES: ANGULAR ± 1/2°		TITLE		CRIMP TERMINAL, MALE .093/(2.36) DIA. FOR 14 THRU 18 AWG WIRE	
INCH		METRIC		MOX		MOX INCORPORATED	
3 PLACE	± .010	---		SHEET NO.		DATE	
2 PLACE	± .014	± 0.25		1 OF 1		6/17/91	
1 PLACE	---	± 0.35		REVISED & REDRAWN		E	
DRAFT WHERE APPLICABLE MUST REMAIN WITHIN DIMENSIONS				REVISED 3/4/92			
PART NO.		SEE CHART		DRWG. NO.		SD-7239-*	
FILE NAME		SD7239X1		DIV.		SIZE	
APP'D. BY		CWF		SCALE		6 : 1	