



Chipsmall Limited consists of a professional team with an average of over 10 year of expertise in the distribution of electronic components. Based in Hongkong, we have already established firm and mutual-benefit business relationships with customers from,Europe,America and south Asia,supplying obsolete and hard-to-find components to meet their specific needs.

With the principle of “Quality Parts,Customers Priority,Honest Operation,and Considerate Service”,our business mainly focus on the distribution of electronic components. Line cards we deal with include Microchip,ALPS,ROHM,Xilinx,Pulse,ON,Everlight and Freescale. Main products comprise IC,Modules,Potentiometer,IC Socket,Relay,Connector.Our parts cover such applications as commercial,industrial, and automotives areas.

We are looking forward to setting up business relationship with you and hope to provide you with the best service and solution. Let us make a better world for our industry!



## Contact us

Tel: +86-755-8981 8866 Fax: +86-755-8427 6832

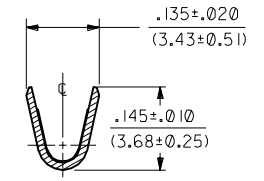
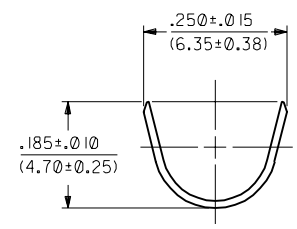
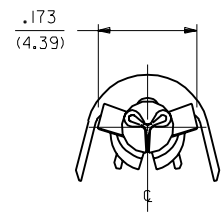
Email & Skype: info@chipsmall.com Web: www.chipsmall.com

Address: A1208, Overseas Decoration Building, #122 Zhenhua RD., Futian, Shenzhen, China



PART NO.	ENG. NO.	
02-09-2170	42138-(P90)I	
02-09-2171	42138-(P90)IL	
02-09-2172	42138-(P90)II	<b>OBSOLETE</b>
02-09-2173	42138-(P90)IIL	
	-	
	-	

42138



**LEGEND**

42138-\*(\*\*\*\*)\*

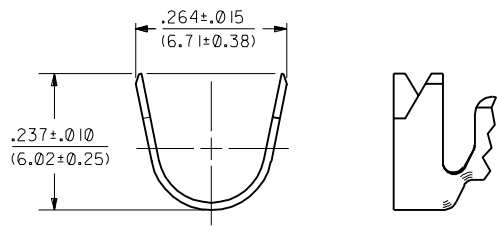
CRIMP STYLE  
BLANK="A"  
I="B"

FORM  
BLANK=CHAIN  
L=LOOSE

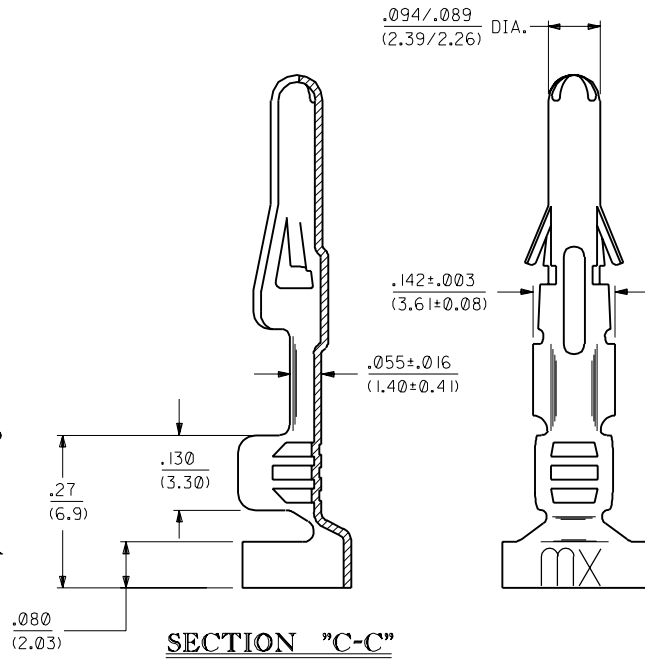
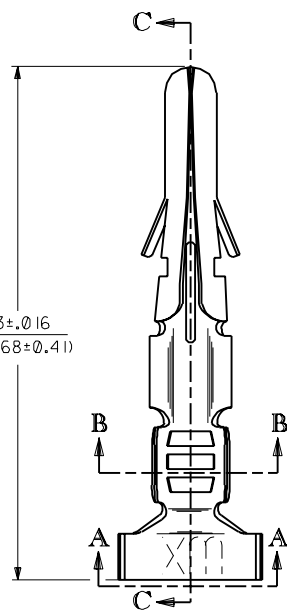
P=PREPLATE  
BLANK=POSTPLATE

FINISH CODE

FINISHES, PER ES-88:  
901 HOT TIN DIP .000020/(0.0005) MIN.



**VIEW "A-A"**  
CRIMP STYLE "B"

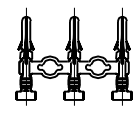


**SECTION "C-C"**

- NOTES:
- TERMINAL FOR USE WITH .093/(2.36) SERIES HOUSINGS AND WILL ACCEPT 14 THRU 18 AWG WIRE.
  - INSULATION CRIMP STYLE "A" ACCEPTS A MAX. INSULATION DIA. OF .180/(4.57). INSULATION CRIMP STYLE "B" IS INTENDED FOR DOUBLE CRIMP OF TWO 18 AWG WIRES; ONE WITH A MAX. INSULATION DIA. OF .170/(4.32), THE OTHER A MAX. INSULATION DIA. OF .110/(2.79).

MATERIAL:  
CARTRIDGE BRASS, ALLOY #C26000,  
.013/(0.33) THICK, SPRING TEMPER.

CHAIN FORM  
FULL SCALE



H	OBSOLETE P/N UCR2002-0270 COMERCI 01/10/99
GI	REVISED EOR U3 0507 STAMBAUGH 99-2-9
G	REVISE PER EOR U3 0507 GIC 4/1/93 RW
F	REVISE PER EOR U3 0159 GIC 2/9/93 RW
E	REVISE PER EOR U2 0674 GIC 4/28/92 RW
D	REVISE & REDRAW PER EOR U2 0081 GIC 2/21/92 RW

DIMENSIONS SHOWN (METRIC) INCH UNLESS OTHERWISE SPECIFIED TOLERANCES ANGULAR ± 1/2°		▽ = 0		= 0		REVISE ONLY ON CAD SYSTEM	
INCH METRIC		TITLE		MFG. SH.		REV. LTR.	
3 PLACE ± .010	---	CRIMP TERMINAL, MALE		REV. LTR.		REV. LTR.	
2 PLACE ± .014 ± 0.25	---	.093/(2.36) DIA.		REV. LTR.		REV. LTR.	
1 PLACE --- ± 0.35	---	14-18 AWG W/LARGE INSUL.		REV. LTR.		REV. LTR.	
DRAFT WHERE APPLICABLE MUST REMAIN WITHIN DIMENSIONS		MOLEX INCORPORATED		SHEET NO.		DATE	
PART NO.		L15LE.ILL. 60532		1 of 1		2/21/92	
DRWG. NO.		SEE CHART		U.S.A.		SD-42138-*	
FILE NAME		SCALE		DIV.		SIZE	
S42138X1		6 : 1		CP		C	
THIS DRAWING CONTAINS INFORMATION THAT IS PROPRIETARY TO MOLEX INC. AND SHOULD NOT BE USED WITHOUT WRITTEN PERMISSION.							

42138