



Chipsmall Limited consists of a professional team with an average of over 10 year of expertise in the distribution of electronic components. Based in Hongkong, we have already established firm and mutual-benefit business relationships with customers from,Europe,America and south Asia,supplying obsolete and hard-to-find components to meet their specific needs.

With the principle of "Quality Parts,Customers Priority,Honest Operation,and Considerate Service",our business mainly focus on the distribution of electronic components. Line cards we deal with include Microchip,ALPS,ROHM,Xilinx,Pulse,ON,Everlight and Freescale. Main products comprise IC,Modules,Potentiometer,IC Socket,Relay,Connector.Our parts cover such applications as commercial,industrial, and automotives areas.

We are looking forward to setting up business relationship with you and hope to provide you with the best service and solution. Let us make a better world for our industry!



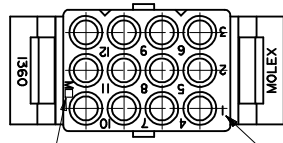
Contact us

Tel: +86-755-8981 8866 Fax: +86-755-8427 6832

Email & Skype: info@chipsmall.com Web: www.chipsmall.com

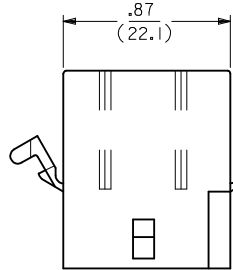
Address: A1208, Overseas Decoration Building, #122 Zhenhua RD., Futian, Shenzhen, China





FACTORY I.D. CIRCUIT NUMBERS

CIRCUIT I.D. NUMBERS

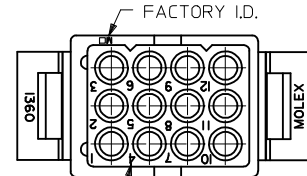


OPTIONAL MOUNTING EAR (PREBENT EAR SHOWN)

1.02±.03 (25.9±0.8)

OPTIONAL LOCKING RAMPS

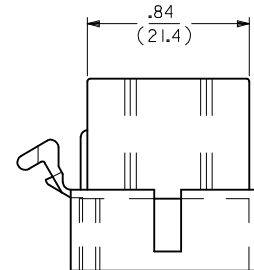
.69 (17.6)



FACTORY I.D.

CIRCUIT NUMBERS

CIRCUIT I.D. NUMBERS



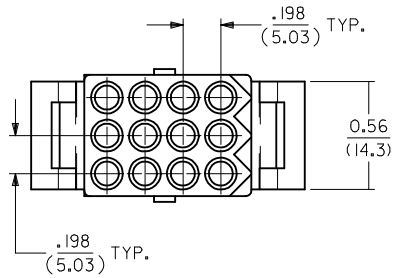
OPTIONAL MOUNTING EAR (PREBENT EAR SHOWN)

.98±.03 (24.9±0.8)

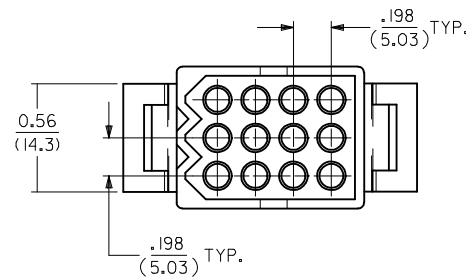
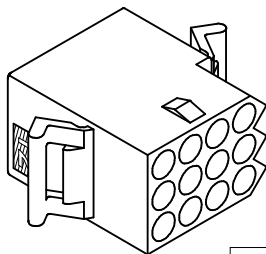
0.42 (10.7)

.98 (24.8)

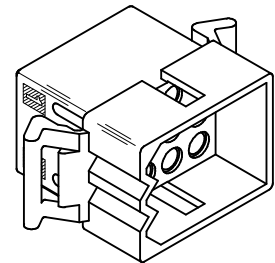
.74 (18.8)



RECEPTACLE



PLUG



OBsolete 1360-R1* EC NO: UCP2015-1850 DRWN:JFOX 2014/11/03 CHKD:HKIPPER 2014/11/03 APPR:FSMITH 2014/11/13	QUALITY SYMBOLS	GENERAL TOLERANCES (UNLESS SPECIFIED)	DIMENSION STYLE	SCALE	DESIGN UNITS	THIRD ANGLE PROJECTION
	▽=0	mm INCH	IN/MM	2:1	INCH	
	▽=0	4 PLACES ± --- ± ---	DRAWN BY DATE			TITLE
	▽=0	3 PLACES ± --- ±.010	CHECKED BY DATE			.093/(2.36) HOUSINGS PLUG AND RECEPTACLE 12 CKT, .198/(5.03)CTR.
0	2 PLACES ±0.25 ±.014	APPROVED BY DATE			molex	
0	1 PLACE ±0.35 ± ---	FSMITH 2014/11/13	MATERIAL NO.	DOCUMENT NO.	SD-1360-*	SHEET NO.
0	0 PLACE ± --- ± ---		SEE CHART			1 OF 2
AE2	ANGULAR ± 2°	DRAFT WHERE APPLICABLE MUST REMAIN WITHIN DIMENSIONS	SIZE	THIS DRAWING CONTAINS INFORMATION THAT IS PROPRIETARY TO MOLEX INCORPORATED AND SHOULD NOT BE USED WITHOUT WRITTEN PERMISSION		

PLUG	
ORDER NO	ENG NO
03-09-2121	I360-P
03-09-2122 \triangle	I360-PI
03-09-7121	I360-PBK
03-09-7122 \triangle	I360-PIBK
	OBSOLETE

RECEPTACLE	
ORDER NO	ENG NO
03-09-1121	I360-R \triangle
03-09-1122	I360-R1
03-09-1125	I360-R2 \triangle
03-09-1126	I360-R3
03-09-6121	I360-RBK
03-09-6122	I360-RIBK
03-09-6125	I360-R2BK
03-09-6126	I360-R3BK
03-09-6123	I360-RIRD
03-09-6124	I360-RIYW
	OBSOLETE
	OBSOLETE

LEGEND: PLUG

I360-P***

P = PLUG

BLANK = WITHOUT EARS
I = WITH MOUNTING EARS

COLOR:

BLANK = NATURAL COLOR
AM = AMBER BK = BLACK BU = BLUE
BN = BROWN GY = GRAY GN = GREEN
OR = ORANGE RD = RED YW = YELLOW

LEGEND: RECEPTACLE

I360-R***

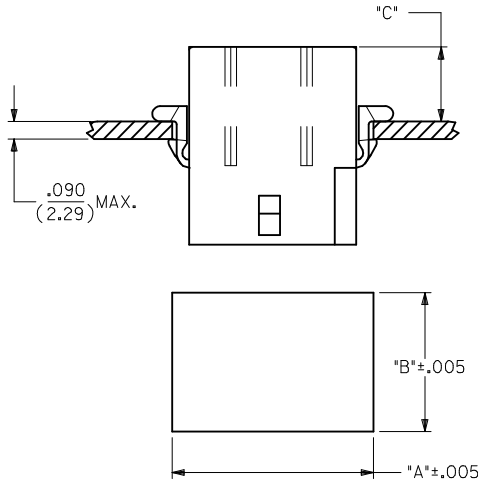
R = RECEPTACLE

OPTION	PREBENT EARS	LOCKING RAMP
BLANK	X	
1		
2	X	X
3		X

X = PRESENT

COLOR:

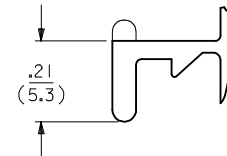
BLANK = NATURAL COLOR
AM = AMBER BK = BLACK BU = BLUE
BN = BROWN GY = GRAY GN = GREEN
OR = ORANGE RD = RED YW = YELLOW



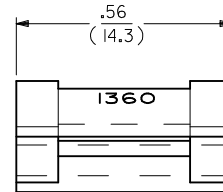
RECOMMENDED PANEL OPENING

HOUSING	DIM. "A"	DIM. "B"	"C" PREBENT EAR	"C" STANDARD EAR
PLUG	1.155/(29.34)	.760/(19.30)	.40/(10.2)	.36/(9.1)
RECEPT.	1.050/(26.67)	.725/(18.42)	.41/(10.4)	.37/(9.4)

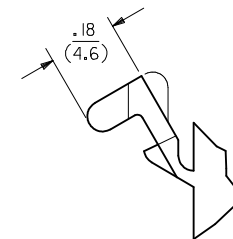
- NOTES:
- MATERIAL: NYLON TYPE 6/6, UL94V-2
 - FINISH: N/A
 - PRODUCT SPECIFICATION: PS-02-09, PS-43660-9999
 - PACKAGING SPECIFICATION: PK-1360-001
 - CIRCUIT I.D. NUMBERS ON SIDE OF HOUSING APPEAR ON PARTS FROM TOOLS BUILT AFTER 10/22/91
 - WHERE DENOTED IN CHART, TOOLS ARE BUILT WITH PREBENT MOUNTING EARS PER DETAIL B AND SUPERSEDE ALL TOOLS PREVIOUSLY BUILT WITH THE STANDARD EARS.
 - PARTS CONFORM TO CLASS B REQUIREMENTS OF COSMETIC SPECIFICATION PS-45499-002.



DETAIL A
.093/(2.36) STANDARD MOUNTING EAR
(SCALE 4:1)



DETAIL B
.093/(2.36) PREBENT MOUNTING EAR
(SCALE 4:1)



SEE SHEET 1 SEC NO: UCP2015-1850 DRWN: JDOX 2014/11/03 CHKD: HKIPPER 2014/11/03 APPR: FSMITH 2014/11/13	QUALITY SYMBOLS $\nabla=0$ $\nabla=0$ $\nabla=0$	GENERAL TOLERANCES (UNLESS SPECIFIED)		DIMENSION STYLE	SCALE	DESIGN UNITS	THIRD ANGLE PROJECTION		
				IN/MM	2:1	INCH			
				DRAWN BY	DATE	TITLE			
				CHECKED BY	DATE	.093/(2.36) HOUSINGS PLUG AND RECEPTACLE 12 CKT, .198/(5.03)CTR.			
				APPROVED BY	DATE				
DRAFT WHERE APPLICABLE MUST REMAIN WITHIN DIMENSIONS		ANGULAR $\pm 2^\circ$		MATERIAL NO.	DOCUMENT NO.	SHEET NO.			
AE2		SEE CHART		SD-1360-*		2 OF 2			
THIS DRAWING CONTAINS INFORMATION THAT IS PROPRIETARY TO MOLEX INCORPORATED AND SHOULD NOT BE USED WITHOUT WRITTEN PERMISSION									