



Chipsmall Limited consists of a professional team with an average of over 10 year of expertise in the distribution of electronic components. Based in Hongkong, we have already established firm and mutual-benefit business relationships with customers from,Europe,America and south Asia,supplying obsolete and hard-to-find components to meet their specific needs.

With the principle of “Quality Parts,Customers Priority,Honest Operation,and Considerate Service”,our business mainly focus on the distribution of electronic components. Line cards we deal with include Microchip,ALPS,ROHM,Xilinx,Pulse,ON,Everlight and Freescale. Main products comprise IC,Modules,Potentiometer,IC Socket,Relay,Connector.Our parts cover such applications as commercial,industrial, and automotives areas.

We are looking forward to setting up business relationship with you and hope to provide you with the best service and solution. Let us make a better world for our industry!



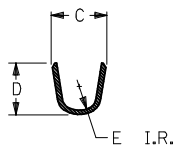
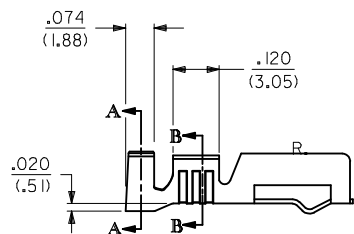
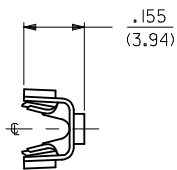
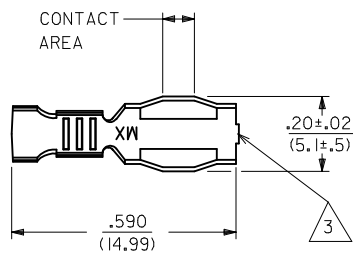
Contact us

Tel: +86-755-8981 8866 Fax: +86-755-8427 6832

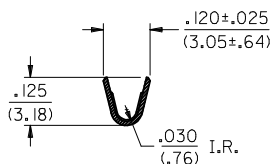
Email & Skype: info@chipsmall.com Web: www.chipsmall.com

Address: A1208, Overseas Decoration Building, #122 Zhenhua RD., Futian, Shenzhen, China





SECTION A-A




SECTION B-B

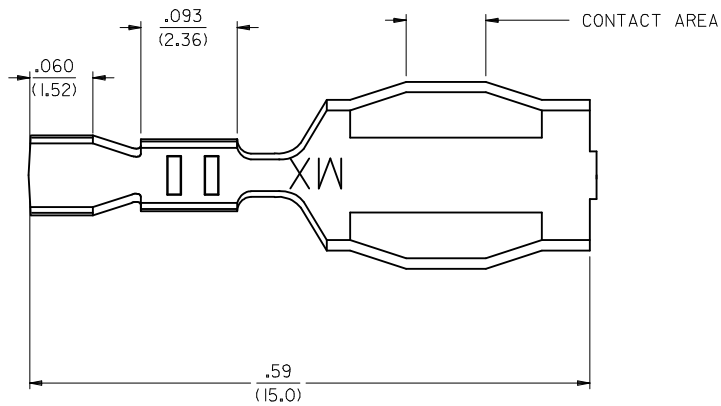
NOTES:

1. THESE TERMINALS ARE FOR USE WITH THE 1461-* SERIES HOUSINGS.
THE -1* GROUP CRIMPS #18 TO #22 AWG WIRE WITH INSULATION DIAMETERS OF .061/(1.55) TO .102/(2.59).
THE -2* GROUP CRIMPS #14 TO #16 AWG WIRE WITH AN INSULATION DIAMETER OF .140/(3.56) MAX.
2. THESE TERMINALS ARE PRODUCED ONLY FOR EXPORT TO JAPAN.
3. CARRIER CUT OFF DIMENSION: .007/(.18) MAX.
4. PRODUCT SPECIFICATION PS 50-36 APPLIES.

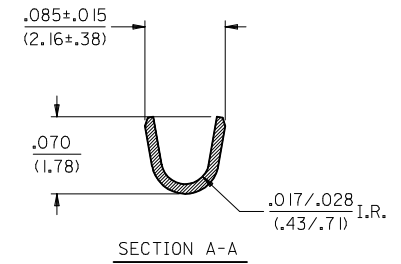
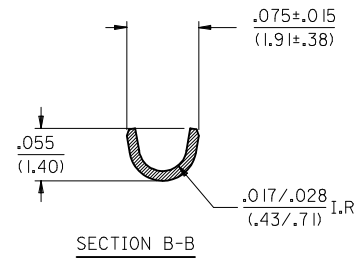
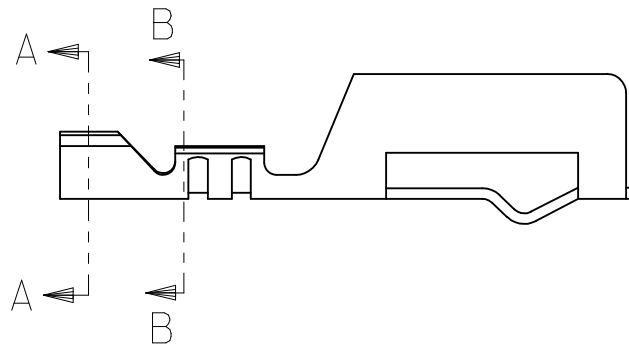
MATERIAL:
260 BRASS

PART NO.	ENG. NO.	DIM. C	DIM. D	DIM. E	FORM	PLATING PER SDES-
05-02-0047	1457-1	.145±.025 (3.68±.64)	.135 (3.43)	.045 (1.14)	CHAIN	88-P901 TIN
05-02-0049	1457-2	.121±.03 (5.3±.8)	.185±.015 (4.70±.38)	.060 (1.52)	CHAIN	88-P901 TIN

REMOVE UNSOLD P/N'S EC NO: UCP2017-0023 DRWN: JSCHAFER 2016/07/06 CHKD: APPR: FSMITH 2016/08/12	DESCRIPTION	QUALITY SYMBOLS	GENERAL TOLERANCES (UNLESS SPECIFIED)		DIMENSION STYLE IN/MM		SCALE 4:1	DESIGN UNITS INCH	 THIRD ANGLE PROJECTION
				mm	INCH	DRAWN BY CD	DATE 2011/07/26	TITLE TERMINAL, COMMONING CRIMP	
			4 PLACES ± ---	± ---	CHECKED BY RHR	DATE 1991/11/02			
			3 PLACES ± ---	± .010	APPROVED BY FSMITH	DATE 2016/08/12			
			2 PLACES ± .25	± .014	MATERIAL NO.		DOCUMENT NO.		SHEET NO.
			1 PLACE ± .35	± ---	SEE CHART		SD-1457-*		1 OF 2
			0 PLACE ±		DRAFT WHERE APPLICABLE MUST REMAIN WITHIN DIMENSIONS				
			ANGULAR ±1/2°						



5/64 ^C

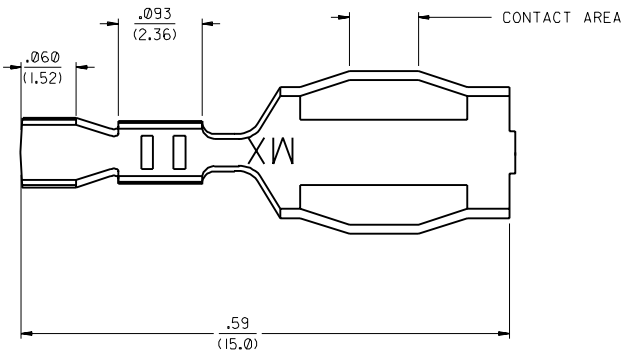


NOTES:

1. FOR ALL OTHER DIMENSIONS SEE SHEET 1.
2. THE -6* GROUP CRIMPS #24 TO #30 AWG WIRE WITH AN INSULATION DIAMETER OF .050/(1.27)

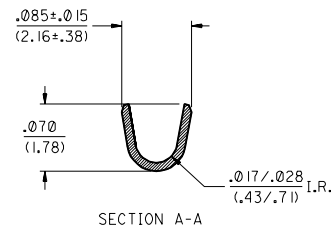
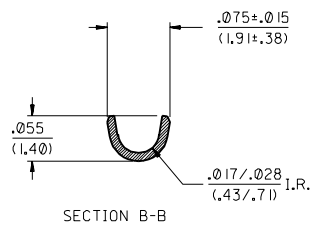
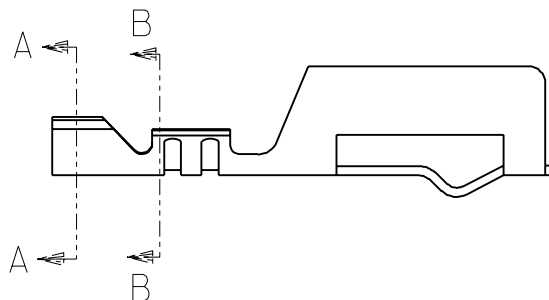
PART NO.	ENG. NO.	FORM	PLATING
05-02-0091	1457-6	CHAIN	TIN PER SDES-88

SEE SHEET 1 EC NO: UCP2017-0023 DRWN: JSCHAFER 2016/07/06 CHKD: APPR: FSMITH 2016/08/12	REV	DESCRIPTION	QUALITY SYMBOLS	GENERAL TOLERANCES (UNLESS SPECIFIED)		DIMENSION STYLE IN/MM		SCALE 4:1	DESIGN UNITS INCH	THIRD ANGLE PROJECTION					
					mm	INCH	DRAWN BY CD	DATE 2011/07/26	TITLE TERMINAL, COMMONING CRIMP						
				4 PLACES	± ---	± ---	CHECKED BY RHR	DATE 1991/11/02							
				3 PLACES	± ---	± .010	APPROVED BY FSMITH		DATE 2016/08/12		molex				
				2 PLACES	± .25	± .014									
				1 PLACE	± .35	± ---	MATERIAL NO.		DOCUMENT NO.					SHEET NO. 2 OF 2	
				0 PLACE	±	±									
				ANGULAR ±1/2°			SEE CHART		SD-1457-*						
				DRAFT WHERE APPLICABLE											
				MUST REMAIN WITHIN DIMENSIONS											
SIZE			THIS DRAWING CONTAINS INFORMATION THAT IS PROPRIETARY TO MOLEX INCORPORATED AND SHOULD NOT BE USED WITHOUT WRITTEN PERMISSION												



NOTES:

1. FOR ALL OTHER DIMENSIONS SEE SHEET 1.
2. THE -6* GROUP CRIMPS #24 TO #30 AWG WIRE WITH AN INSULATION DIAMETER OF .050/(1.27)



PART NO.	ENG. NO.	FORM	PLATING
05-02-0091	1457-6	CHAIN	TIN PER
05-02-0092	1457-6L	LOOSE	SDES-88

DIMENSIONS SHOWN (METRIC) INCH		UNLESS OTHERWISE SPECIFIED TOLERANCES: ANGULAR ± .005 5°		REVISIONS ONLY ON CAD SYSTEM	
INCH		METRIC		TITLE	
3 PLACE	± .010	---		TERMINAL, COMMONING, CRIMP	
2 PLACE	± .014	± 0.25		(1457-6*)	
1 PLACE	---	± 0.36		MOLEX INCORPORATED	
DRAFT WHERE APPLICABLE MUST REMAIN WITHIN DIMENSIONS				SHEET NO. 3	
DATE 02/11/91				U.S.A.	
PART NO. SD-1457-6				DRWG. NO. SD-1457-*	
FILE NAME SD1457X3				DIV. CP	
SCALE 4:1				SIZE C	

SEE SHEET 1	
SEE SHEET 1	
SEE SHEET 1	
SEE SHEET 1	
SEE SHEET 1	S
SEE SHEET 1	RI
SEE SHEET 1	R
REVISIONS	LTR.