



Chipsmall Limited consists of a professional team with an average of over 10 year of expertise in the distribution of electronic components. Based in Hongkong, we have already established firm and mutual-benefit business relationships with customers from,Europe,America and south Asia,supplying obsolete and hard-to-find components to meet their specific needs.

With the principle of “Quality Parts,Customers Priority,Honest Operation,and Considerate Service”,our business mainly focus on the distribution of electronic components. Line cards we deal with include Microchip,ALPS,ROHM,Xilinx,Pulse,ON,Everlight and Freescale. Main products comprise IC,Modules,Potentiometer,IC Socket,Relay,Connector.Our parts cover such applications as commercial,industrial, and automotives areas.

We are looking forward to setting up business relationship with you and hope to provide you with the best service and solution. Let us make a better world for our industry!



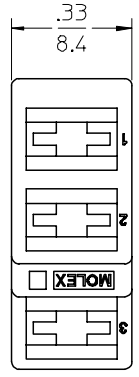
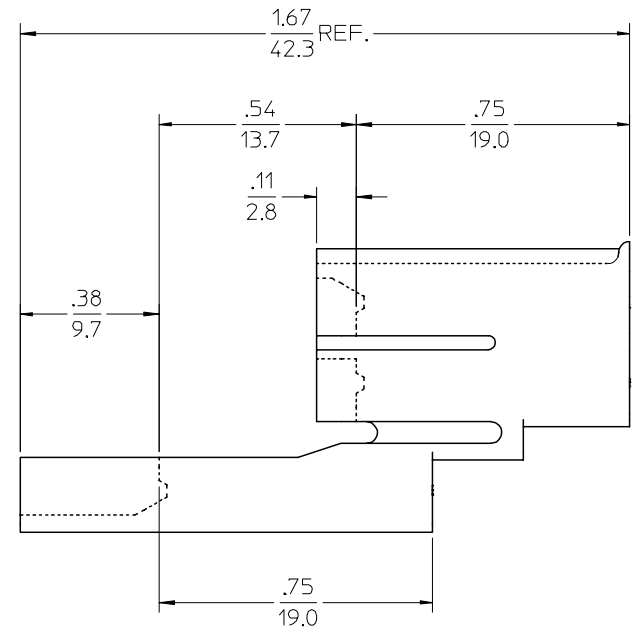
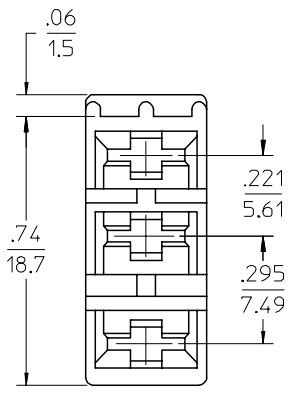
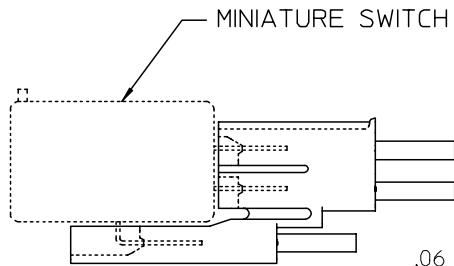
## Contact us

Tel: +86-755-8981 8866 Fax: +86-755-8427 6832

Email & Skype: info@chipsmall.com Web: www.chipsmall.com

Address: A1208, Overseas Decoration Building, #122 Zhenhua RD., Futian, Shenzhen, China





NOTES:-

1. MATERIAL:  
 NYLON 6/6, UL 94V-2  
 COLOR: SEE CHART
2. FINISH: NONE.
3. PRODUCT SPECIFICATION: NONE
4. PACKAGING INFORMATION: PK-2191-0001
5. THIS HOUSING FOR USE WITH 2176 AND 2576 SERIES TERMINALS.

PART NUMBER	ENG. NO.	COLOR
06-02-3031	2191	NATURAL
06-02-9031	2191-BK	BLACK
06-02-9032	2191-GY	GRAY

UPDATE REVISION LEVEL EC NO: UICP22004-0159 DRWN: AELHAG 2003/07/28 CHKD: F SMITH 2003/08/05 APPR: F SMITH 2003/08/28	QUALITY SYMBOLS	GENERAL TOLERANCES (UNLESS SPECIFIED)		SCALE 1:1	DESIGN UNITS INCH	THIRD ANGLE PROJECTION	REVISE ON CAD ONLY	
	DESCRIPTION ▼ = 0 ▽ = 0	4 PLACES	mm ± ---	INCH ± ---	DIMENSION STYLE IN/MM		TITLE SWITCH CONNECTOR HOUSING, 3 CIRCUIT FLAT BLADE SYSTEM	
		3 PLACES	± 0.010		DRAWN BY GC	DATE 95/12/19	MOLEX INCORPORATED MATERIAL NO. SEE CHART DOCUMENT NO. SD-2191-* SHEET NO. 1 OF 1	
		2 PLACES	± 0.015		CHECKED BY KBP	DATE 95/12/19		
1 PLACE	± .38			APPROVED BY RAS	DATE 95/12/19	THIS DRAWING CONTAINS INFORMATION THAT IS PROPRIETARY TO MOLEX INCORPORATED AND SHOULD NOT BE USED WITHOUT WRITTEN PERMISSION		
REV N2		DRAFT WHERE APPLICABLE MUST REMAIN WITHIN DIMENSIONS						