



Chipsmall Limited consists of a professional team with an average of over 10 year of expertise in the distribution of electronic components. Based in Hongkong, we have already established firm and mutual-benefit business relationships with customers from,Europe,America and south Asia,supplying obsolete and hard-to-find components to meet their specific needs.

With the principle of “Quality Parts,Customers Priority,Honest Operation,and Considerate Service”,our business mainly focus on the distribution of electronic components. Line cards we deal with include Microchip,ALPS,ROHM,Xilinx,Pulse,ON,Everlight and Freescale. Main products comprise IC,Modules,Potentiometer,IC Socket,Relay,Connector.Our parts cover such applications as commercial,industrial, and automotives areas.

We are looking forward to setting up business relationship with you and hope to provide you with the best service and solution. Let us make a better world for our industry!



Contact us

Tel: +86-755-8981 8866 Fax: +86-755-8427 6832

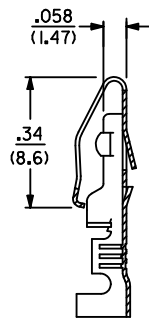
Email & Skype: info@chipsmall.com Web: www.chipsmall.com

Address: A1208, Overseas Decoration Building, #122 Zhenhua RD., Futian, Shenzhen, China

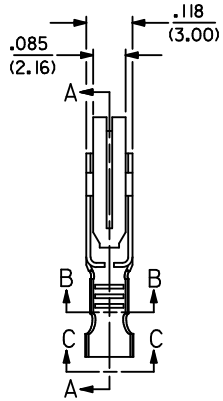


NOTES

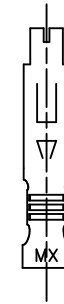
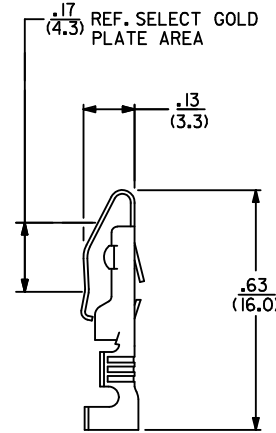
- 1) MATERIAL: BRASS, ALLOY 260, .010/(0.25) THICK.
- 2) FINISH:
 - P555: .000015/(0.00038) MIN. SELECT GOLD OVER .000030/(0.00076) MIN. NICKEL OVERALL.
 - P909: .000100/(0.00254) MIN. HOT TIN DIP.
 - P607: .000050/(0.00127) MIN. SELECT GOLD OVER .000050/(0.00127) MIN. NICKEL OVERALL.
 - P228: .000030/(0.00076) MIN. SELECT GOLD ON CONTACT AREA, .000100/(0.00254) MIN. SELECT MATTE TIN, BOTH OVER .000050/(0.00127) MIN. NICKEL OVERALL.
- 3) PRODUCT SPECIFICATION PS-09-50 APPLIES.
- 4) TERMINAL FOR USE WITH 18-24 AWG WIRE.
- 5) THIS PART CONFORMS TO CLASS B REQUIREMENTS OF COSMETIC SPEC. PS-45499-002 .



SECTION A-A

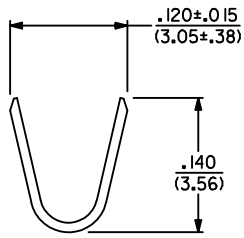


SECTION B-B

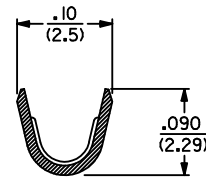


LEGEND

4366-***
 PLATING (SEE NOTE 2) ——— FORM
 ——— BLANK=CHAIN
 ——— L=LOOSE



VIEW C-C



2	D
1	D
SHT.	REV.

CORRECT PLATING EC NO: UCP2012-1821 DRWN: MASTROH 2012/01/04 CHKD: HKIPPER 2012/01/05 APPR: FSMITH 2012/02/02	QUALITY SYMBOLS	GENERAL TOLERANCES (UNLESS SPECIFIED)	DIMENSION STYLE	SCALE	DESIGN UNITS	THIRD ANGLE PROJECTION TERMINAL CRIMP ON
	▽=0	mm INCH	IN/MM	4:1	INCH	
	▽=0	4 PLACES ± --- ± ---	DRAWN BY DATE	ROBERTS 1991/08/15	TITLE	
	▽=0	3 PLACES ± --- ± .010	CHECKED BY DATE	PATEL 1991/08/15	MOLEX INCORPORATED	
▽=0	2 PLACES ± 0.25 ± .014	APPROVED BY DATE	LENZ 1991/08/15	DOCUMENT NO. SD-4366		
	1 PLACE ± 0.35 ± ---	MATERIAL NO. SEE CHART		SHEET NO. 1 OF 2		
	ANGULAR ± 1/2°	DRAFT WHERE APPLICABLE MUST REMAIN WITHIN DIMENSIONS		THIS DRAWING CONTAINS INFORMATION THAT IS PROPRIETARY TO MOLEX INCORPORATED AND SHOULD NOT BE USED WITHOUT WRITTEN PERMISSION		

PART NO.	ENG. NO	REF.	PART NO.	ENG. NO		PART NO.	ENG. NO		PART NO.	ENG. NO	
08-03-0304	4366-P909L										
08-03-0303	4366-P909										
08-05-0302	4366-P555L	ES-150-*									
08-05-0301	4366-P555	ES-150-*									
08-05-0305	4366-P607	ES-150-*									
50-36-1873	4366-P228	ES-150-*									

COLUMN NO. 1 CON'T. IN COLUMN NO. SHEET NO. COLUMN NO. 2 CON'T. IN COLUMN NO. SHEET NO. COLUMN NO. 3 CON'T. IN COLUMN NO. SHEET NO. COLUMN NO. 4 CON'T. IN COLUMN NO. SHEET NO.

CORRECT PLATING EC NO: UCP2012-1821 DRWN: MSTROH 2012/01/04 CHKD: HKIPPER 2012/01/05 APPR: FSM LTH 2012/02/02	DESCRIPTION REV	QUALITY SYMBOLS	GENERAL TOLERANCES (UNLESS SPECIFIED)	DIMENSION STYLE	SCALE	DESIGN UNITS	THIRD ANGLE PROJECTION
		▽=0 ▽=0 ▽=0	4 PLACES ± --- ± --- 3 PLACES ± --- ± --- 2 PLACES ± --- ± --- 1 PLACE ± --- ± ---	IN/MM	---	INCH	TITLE TERMINAL CRIMP ON
		ANGULAR ±1/2°	DRAFT WHERE APPLICABLE MUST REMAIN WITHIN DIMENSIONS	DRAWN BY DATE ROBERTS 1991/08/28 CHECKED BY DATE PATEL 1991/08/28 APPROVED BY DATE LENZ 1991/08/28	MATERIAL NO. SEE CHART	MOLEX INCORPORATED DOCUMENT NO. SD-4366	SHEET NO. 2 OF 2
		SIZE C	THIS DRAWING CONTAINS INFORMATION THAT IS PROPRIETARY TO MOLEX INCORPORATED AND SHOULD NOT BE USED WITHOUT WRITTEN PERMISSION				