



Chipsmall Limited consists of a professional team with an average of over 10 year of expertise in the distribution of electronic components. Based in Hongkong, we have already established firm and mutual-benefit business relationships with customers from,Europe,America and south Asia,supplying obsolete and hard-to-find components to meet their specific needs.

With the principle of “Quality Parts,Customers Priority,Honest Operation,and Considerate Service”,our business mainly focus on the distribution of electronic components. Line cards we deal with include Microchip,ALPS,ROHM,Xilinx,Pulse,ON,Everlight and Freescale. Main products comprise IC,Modules,Potentiometer,IC Socket,Relay,Connector.Our parts cover such applications as commercial,industrial, and automotives areas.

We are looking forward to setting up business relationship with you and hope to provide you with the best service and solution. Let us make a better world for our industry!



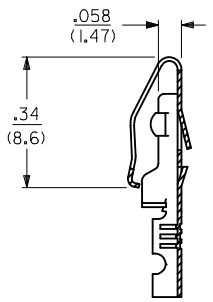
Contact us

Tel: +86-755-8981 8866 Fax: +86-755-8427 6832

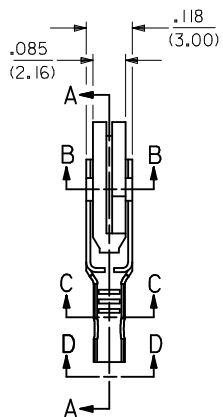
Email & Skype: info@chipsmall.com Web: www.chipsmall.com

Address: A1208, Overseas Decoration Building, #122 Zhenhua RD., Futian, Shenzhen, China

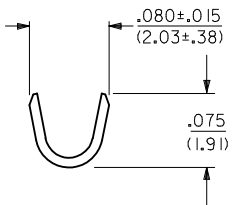
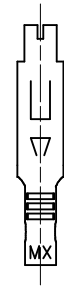
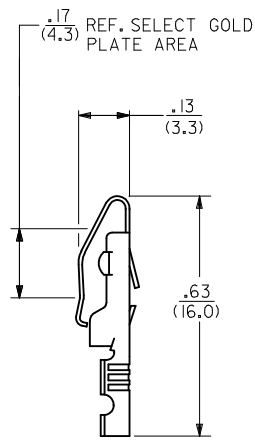




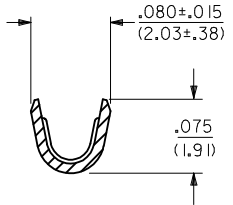
SECTION A-A



SECTION C-C



VIEW D-D



LEGEND

4573-***
 FORM
 BLANK=CHAIN
 L=LOOSE
 PLATING
 (PER SDES-88)

NOTES:
 1) MATERIAL: BRASS, ALLOY C260, .010/(0.25) THICK.
 2) FINISH:
 (P909) * : OVERALL HOT TIN DIP: .000100/(0.00254) MIN.
 (P555) : SELECT GOLD: .000015/(0.00038) MIN.
 OVERALL NICKEL: .000030/(0.00076) MIN.
 (P228) : SELECT GOLD: .000030/(0.00076) MIN.
 SELECT TIN: .000100/(0.00254) MIN.
 OVERALL NICKEL UNDERPLATE .000050/(0.00127) MIN.
 * THE PRIMARY SHIPPING CARTON WILL BE LABELED "COMPLIANT TO
 RoHS DIRECTIVE 2002/95/EC AND ELV ANNEX II OF DIRECTIVE 2000/53/EC".
 CARTONS WITHOUT THIS LABEL MAY CONTAIN PRODUCT WITH TIN/LEAD PLATING.

3) PRODUCT SPECIFICATION: PS-09-50 APPLIES.
 4) TERMINAL FOR USE WITH 24-30 AWG WIRE.

CHANGE P/N'S EC NO: UCP2009-1522 DRAWN:KIPPER 2008/12/15 CHKD:SSOUSEK 2008/12/18 APPR:FSMITH 2008/12/22	DESCRIPTION	QUALITY SYMBOLS	GENERAL TOLERANCES (UNLESS SPECIFIED)		DIMENSION STYLE		SCALE	DESIGN UNITS	THIRD ANGLE PROJECTION	
		▽=0 ▽=0	mm	INCH	IN/MM		1:1	INCH	MOLEX INCORPORATED	
REV F2	DRAWN:KIPPER 2008/12/15 CHKD:SSOUSEK 2008/12/18 APPR:FSMITH 2008/12/22	DESCRIPTION	4 PLACES ± --- ± ---	3 PLACES ± --- ± .010	DRAWN BY	DATE	TITLE			
			2 PLACES ± 0.25 ± .014	1 PLACE ± 0.36 ± ---	ROBERTS	08/15/91	TERMINAL CRIMP ON			
			ANGULAR ±1/2°		CHECKED BY	DATE	MOLEX INCORPORATED			
			DRAFT WHERE APPLICABLE MUST REMAIN WITHIN DIMENSIONS		APPROVED BY	DATE	DOCUMENT NO.		SHEET NO.	
					LENZ	08/15/91	SD-4573		1 OF 2	
					SEE CHART		THIS DRAWING CONTAINS INFORMATION THAT IS PROPRIETARY TO MOLEX INCORPORATED AND SHOULD NOT BE USED WITHOUT WRITTEN PERMISSION			

13 12 11 10 9 8 7 6 5 4 3 2 1

PART NO.	ENG. NO.	PART NO.	ENG. NO.	PART NO.	ENG. NO.	PART NO.	ENG. NO.
08-03-0305	4573-P909						
08-03-0306	4573-P909L						
08-05-0303	4573-P555						
08-05-0304	4573-P555L						
50-36-2431	4573-P228						
50-36-2432	4573-P228L						

COLUMN NO. 1	CON'T. IN COLUMN NO.	SHEET NO.	COLUMN NO. 2	CON'T. IN COLUMN NO.	SHEET NO.	COLUMN NO. 3	CON'T. IN COLUMN NO.	SHEET NO.	COLUMN NO. 4	CON'T. IN COLUMN NO.	SHEET NO.
--------------	----------------------	-----------	--------------	----------------------	-----------	--------------	----------------------	-----------	--------------	----------------------	-----------

CHANGE P/N'S EC NO: UCP2009-1522 DRAWN: KIPPER 2008/12/15 CHKD: SSOUSEK 2008/12/18 APPR: FSM LTH 2008/12/22	QUALITY SYMBOLS =0 =0	GENERAL TOLERANCES (UNLESS SPECIFIED) <table border="1"> <tr> <td></td> <td>mm</td> <td>INCH</td> </tr> <tr> <td>4 PLACES</td> <td>± .---</td> <td>± .---</td> </tr> <tr> <td>3 PLACES</td> <td>± .---</td> <td>± .010</td> </tr> <tr> <td>2 PLACES</td> <td>± 0.25</td> <td>± .014</td> </tr> <tr> <td>1 PLACE</td> <td>± 0.35</td> <td>± .---</td> </tr> </table>		mm	INCH	4 PLACES	± .---	± .---	3 PLACES	± .---	± .010	2 PLACES	± 0.25	± .014	1 PLACE	± 0.35	± .---	DIMENSION STYLE IN/MM DRAWN BY: ROBERTS DATE: 08/26/91 CHECKED BY: PATEL DATE: 08/26/91 APPROVED BY: LENZ DATE: 08/26/91	SCALE: 1:1 DESIGN UNITS: INCH THIRD ANGLE PROJECTION	TITLE: TERMINAL CANTILEVER STRAIGHT-ON CRIMP TYPE MOLEX INCORPORATED MATERIAL NO. SEE CHART DOCUMENT NO. SD-4573	SHEET NO. 2 OF 2
			mm	INCH																	
		4 PLACES	± .---	± .---																	
		3 PLACES	± .---	± .010																	
2 PLACES	± 0.25	± .014																			
1 PLACE	± 0.35	± .---																			
DRAFT WHERE APPLICABLE MUST REMAIN WITHIN DIMENSIONS		MATERIAL NO. SEE CHART	DOCUMENT NO. SD-4573		SHEET NO. 2 OF 2																
SIZE C THIS DRAWING CONTAINS INFORMATION THAT IS PROPRIETARY TO MOLEX INCORPORATED AND SHOULD NOT BE USED WITHOUT WRITTEN PERMISSION																					
F2																					

12 11 10 9 8 7 6 5 4 3 2 1