



Chipsmall Limited consists of a professional team with an average of over 10 year of expertise in the distribution of electronic components. Based in Hongkong, we have already established firm and mutual-benefit business relationships with customers from,Europe,America and south Asia,supplying obsolete and hard-to-find components to meet their specific needs.

With the principle of "Quality Parts,Customers Priority,Honest Operation,and Considerate Service",our business mainly focus on the distribution of electronic components. Line cards we deal with include Microchip,ALPS,ROHM,Xilinx,Pulse,ON,Everlight and Freescale. Main products comprise IC,Modules,Potentiometer,IC Socket,Relay,Connector.Our parts cover such applications as commercial,industrial, and automotives areas.

We are looking forward to setting up business relationship with you and hope to provide you with the best service and solution. Let us make a better world for our industry!



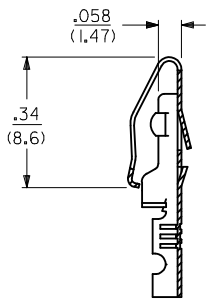
Contact us

Tel: +86-755-8981 8866 Fax: +86-755-8427 6832

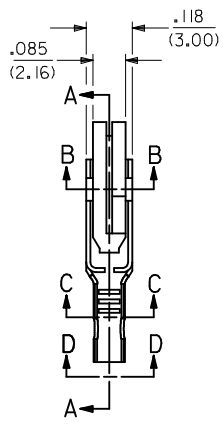
Email & Skype: info@chipsmall.com Web: www.chipsmall.com

Address: A1208, Overseas Decoration Building, #122 Zhenhua RD., Futian, Shenzhen, China

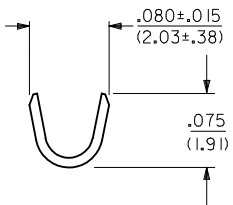
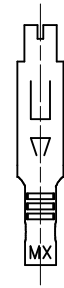
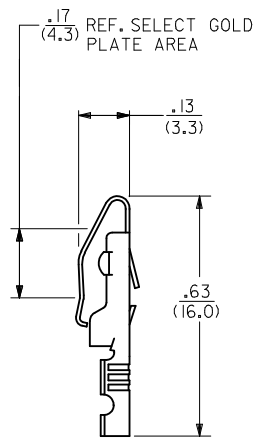




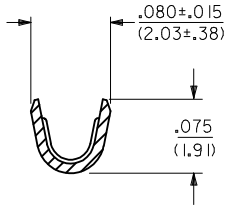
SECTION A-A



SECTION C-C



VIEW D-D



LEGEND

4573-***
 FORM
 BLANK=CHAIN
 L=LOOSE
 PLATING
 (PER SDES-88)

NOTES:
 1) MATERIAL: BRASS. ALLOY C260. .010/(0.25) THICK.
 2) FINISH:
 (P909) * : OVERALL HOT TIN DIP: .000100/(0.00254) MIN.
 (P555) : SELECT GOLD: .000015/(0.00038) MIN.
 OVERALL NICKEL: .000030/(0.00076) MIN.
 (P228) : SELECT GOLD: .000030/(0.00076) MIN.
 SELECT TIN: .000100/(0.00254) MIN.
 OVERALL NICKEL UNDERPLATE .000050/(0.00127) MIN.
 * THE PRIMARY SHIPPING CARTON WILL BE LABELED "COMPLIANT TO
 RoHS DIRECTIVE 2002/95/EC AND ELV ANNEX II OF DIRECTIVE 2000/53/EC".
 CARTONS WITHOUT THIS LABEL MAY CONTAIN PRODUCT WITH TIN/LEAD PLATING.

3) PRODUCT SPECIFICATION: PS-09-50 APPLIES.
 4) TERMINAL FOR USE WITH 24-30 AWG WIRE.

CHANGE P/N'S EC NO: UCP2009-1522 DRAWN:KIPPER 2008/12/15 CHKD:SSOUSEK 2008/12/18 APPR:FSMITH 2008/12/22	DESCRIPTION	QUALITY SYMBOLS	GENERAL TOLERANCES (UNLESS SPECIFIED)		DIMENSION STYLE		SCALE	DESIGN UNITS	THIRD ANGLE PROJECTION	
		 	mm	INCH	IN/MM		1:1	INCH		
REV F2	4 PLACES ± --- ± --- 3 PLACES ± --- ± .010 2 PLACES ± 0.25 ± .014 1 PLACE ± 0.36 ± --- ANGULAR ± 1/2°	DRAWN BY		DATE		TITLE				
		ROBERTS		08/15/91		TERMINAL CRIMP ON				
APPROVED BY		DATE		MATERIAL NO.						
LENZ		08/15/91		SEE CHART						
DRAFT WHERE APPLICABLE MUST REMAIN WITHIN DIMENSIONS		SIZE		DOCUMENT NO.						
		C		SD-4573						
				SHEET NO. 1 OF 2						
				THIS DRAWING CONTAINS INFORMATION THAT IS PROPRIETARY TO MOLEX INCORPORATED AND SHOULD NOT BE USED WITHOUT WRITTEN PERMISSION						

PART NO.	ENG. NO.	PART NO.	ENG. NO.	PART NO.	ENG. NO.	PART NO.	ENG. NO.
08-03-0305	4573-P909						
08-03-0306	4573-P909L						
08-05-0303	4573-P555						
08-05-0304	4573-P555L						
50-36-2431	4573-P228						
50-36-2432	4573-P228L						

COLUMN NO. 1 CON'T. IN COLUMN NO. SHEET NO. COLUMN NO. 2 CON'T. IN COLUMN NO. SHEET NO. COLUMN NO. 3 CON'T. IN COLUMN NO. SHEET NO. COLUMN NO. 4 CON'T. IN COLUMN NO. SHEET NO.

CHANGE P/N'S EC NO: UCP2009-1522 DRAWN: KIPPER 2008/12/15 CHKD: SSOUSEK 2008/12/18 APPR: FSMITH 2008/12/22	DESCRIPTION REV	QUALITY SYMBOLS	GENERAL TOLERANCES (UNLESS SPECIFIED) 4 PLACES ± --- ± --- 3 PLACES ± --- ± .010 2 PLACES ± 0.25 ± .014 1 PLACE ± 0.35 ± --- ANGULAR ± 1/2° DRAFT WHERE APPLICABLE MUST REMAIN WITHIN DIMENSIONS	DIMENSION STYLE IN/MM DRAWN BY ROBERTS DATE 08/26/91 CHECKED BY PATEL DATE 08/26/91 APPROVED BY LENZ DATE 08/26/91 MATERIAL NO.	SCALE 1:1 DESIGN UNITS INCH THIRD ANGLE PROJECTION	TITLE TERMINAL CANTILEVER STRAIGHT-ON CRIMP TYPE MOLEX INCORPORATED SD-4573	SHEET NO. 2 OF 2	
		▽=0						SEE CHART
		▽=0						THIS DRAWING CONTAINS INFORMATION THAT IS PROPRIETARY TO MOLEX INCORPORATED AND SHOULD NOT BE USED WITHOUT WRITTEN PERMISSION
		F2						