



Chipsmall Limited consists of a professional team with an average of over 10 year of expertise in the distribution of electronic components. Based in Hongkong, we have already established firm and mutual-benefit business relationships with customers from,Europe,America and south Asia,supplying obsolete and hard-to-find components to meet their specific needs.

With the principle of “Quality Parts,Customers Priority,Honest Operation,and Considerate Service”,our business mainly focus on the distribution of electronic components. Line cards we deal with include Microchip,ALPS,ROHM,Xilinx,Pulse,ON,Everlight and Freescale. Main products comprise IC,Modules,Potentiometer,IC Socket,Relay,Connector.Our parts cover such applications as commercial,industrial, and automotives areas.

We are looking forward to setting up business relationship with you and hope to provide you with the best service and solution. Let us make a better world for our industry!



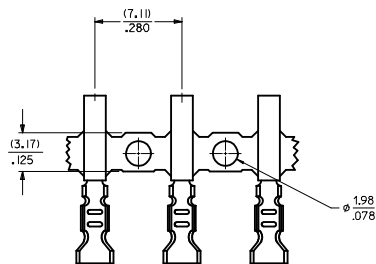
Contact us

Tel: +86-755-8981 8866 Fax: +86-755-8427 6832

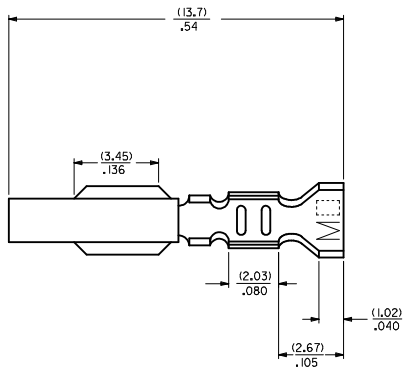
Email & Skype: info@chipsmall.com Web: www.chipsmall.com

Address: A1208, Overseas Decoration Building, #122 Zhenhua RD., Futian, Shenzhen, China





CHAIN FORM
SCALE 5:1



LEGEND

88 18 -- * -- (*) *
MATERIAL
 (.27) / .0106 THK.
 BLANK= BRASS
 A= PHOS BRONZE

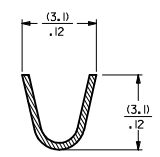
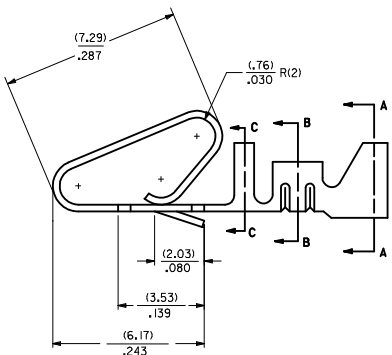
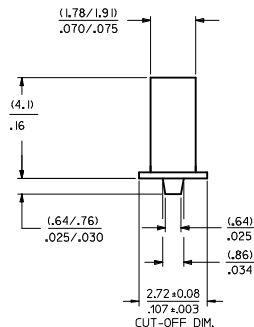
WINDING SPEC
 BLANK=CHAIN, PER WINDING DETAIL "B"
 L=L.OOSE

PLATING
 SEE NOTE 2

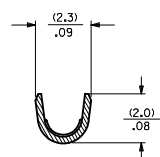
OPTION CODE
 BLANK=AS SHOWN

EDP NO.	ENGINEERING NO.
	88 18-(555)
	88 18-(555)L
08-50-0008	88 18-(P909)
08-50-0023	88 18-(P909)L
40-01-1181	88 18-(999)
40-01-1182	88 18-A(999)
08-65-0128	88 18-A(555)
08-65-0129	88 18-A(555)L
08-52-0131	88 18-A(P909)
08-52-0132	88 18-A(P909)L
08-58-0135	88 18-A(550)
08-58-0136	88 18-A(550)L

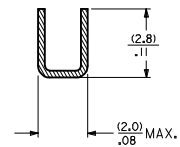
- NOTES:**
1. MATERIAL: SEE LEGEND
 2. FINISH:
 (P909) OVERALL HOT TIN DIP: (0.00254) / .000100 MIN.
 (550) SELECT GOLD: (0.000381) / .000015 MIN.
 OVERALL GOLD FLASH: (0.000051) / .000002 MIN.
 OVERALL NICKEL UNDERPLATE: (0.000761) / .000030 MIN.
 (555) SELECT GOLD: (0.000381) / .000015 MIN.
 OVERALL NICKEL UNDERPLATE: (0.000761) / .000030 MIN.
 3. PRODUCT SPECIFICATION: PS-08-50
 4. PACKAGING SPECIFICATION:
 LOOSE TERMINALS: PER PK-2759-001
 CHAIN FORM TERMINALS: NONE
 5. CRIMP ACCEPTS 18-22 GA. WIRE WITH (2.79) / .110 MAX. INSULATION DIA.
 6. DIMENSIONS GIVEN ACROSS CENTERLINES ARE SYMMETRICAL
 ABOUT THOSE CENTERLINES WITHIN HALF THE TOTAL TOLERANCE.
 7. TERMINAL FOR USE IN 41695 SERIES HOUSINGS.
 8. THIS PART CONFORMS TO CLASS B REQUIREMENTS OF
 COSMETIC SPECIFICATION PS-45499-002.



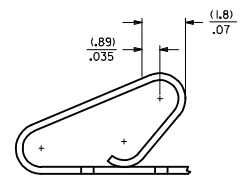
SECTION A-A



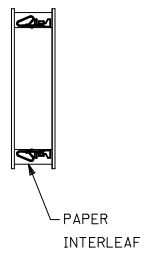
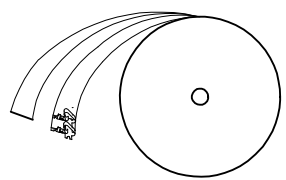
SECTION B-B



SECTION C-C



POST-PLATED SELECT GOLD LOCATION



WINDING DETAIL "B"

ADD WINDING DETAIL EC NO. UCP2014-4131 DRAWN/KIPER CHKD/KANGVEN APPR:FSM/TH	DATE 2014/04/07 2014/04/07 2014/04/21	DESCRIPTION	QUALITY SYMBOLS		GENERAL TOLERANCES (UNLESS SPECIFIED)		DIMENSION STYLE		SCALE	DESIGN UNITS	THIRD ANGLE PROJECTION
			mm	INCH	MM/IN	MM/IN	---	INCH	☉		
▽=0	4 PLACES	±	---	---	---	---	---	---	---	---	---
▽=0	3 PLACES	±	±.010	±.010	±.010	±.010	±.010	±.010	±.010	±.010	±.010
▽=0	2 PLACES	±	±0.25	±.014	±.014	±.014	±.014	±.014	±.014	±.014	±.014
▽=0	1 PLACE	±	±0.36	±	±	±	±	±	±	±	±
▽=0	0 PLACE	±	±	±	±	±	±	±	±	±	±
ANGULAR ±1/2°			DRAFT WHERE APPLICABLE		MUST REMAIN WITHIN DIMENSIONS		MATERIAL NO.		DOCUMENT NO.		SHEET NO.
SIZE D			SEE CHART		THIS DRAWING CONTAINS INFORMATION THAT IS PROPRIETARY TO MOLEX INCORPORATED AND SHOULD NOT BE USED WITHOUT WRITTEN PERMISSION		SD-8818		1 OF 1		