



Chipsmall Limited consists of a professional team with an average of over 10 year of expertise in the distribution of electronic components. Based in Hongkong, we have already established firm and mutual-benefit business relationships with customers from,Europe,America and south Asia,supplying obsolete and hard-to-find components to meet their specific needs.

With the principle of "Quality Parts,Customers Priority,Honest Operation,and Considerate Service",our business mainly focus on the distribution of electronic components. Line cards we deal with include Microchip,ALPS,ROHM,Xilinx,Pulse,ON,Everlight and Freescale. Main products comprise IC,Modules,Potentiometer,IC Socket,Relay,Connector.Our parts cover such applications as commercial,industrial, and automotives areas.

We are looking forward to setting up business relationship with you and hope to provide you with the best service and solution. Let us make a better world for our industry!



## Contact us

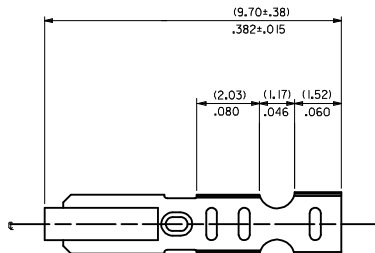
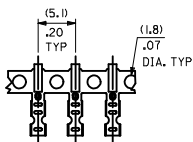
Tel: +86-755-8981 8866 Fax: +86-755-8427 6832

Email & Skype: info@chipsmall.com Web: www.chipsmall.com

Address: A1208, Overseas Decoration Building, #122 Zhenhua RD., Futian, Shenzhen, China

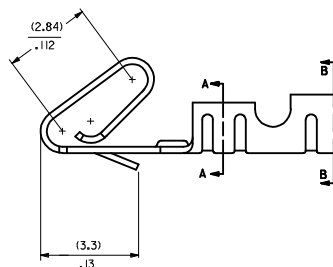
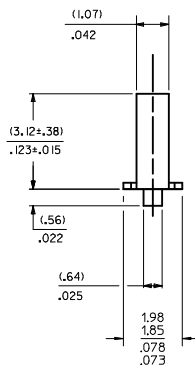
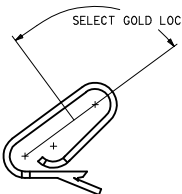


CARRIER VIEW

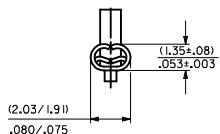


- NOTES:
- MATERIAL:  
(0.20)/.008 THICK BRASS
  - FINISH:  
122 - OVERALL TIN: (0.00381)/.000150 MIN. TIN OVER (0.00076)/.000030 MIN NICKEL  
154 - OVERALL TIN: (0.00254)/.000100 MIN. TIN OVER (0.00127)/.000050 MIN NICKEL  
P909 - OVERALL HOT TIN DIP: (0.00254)/.000100 MIN.  
550 - SELECT GOLD: (0.000381)/.000015 MIN. OVERALL GOLD FLASH: (0.00005)/.000002 MIN. OVERALL NICKEL UNDERPLATE: (0.00076)/.000030 MIN.  
555- SELECT GOLD (0.000381)/.000015 MIN. OVERALL NICKEL UNDERPLATE: (0.00076)/.000030 OVERALL GOLD FLASH: (0.00005)/.000002 MIN. OVERALL NICKEL UNDERPLATE: (0.00127)/.000050 MIN.  
558 - SELECT GOLD: (0.00076)/.000030 MIN. OVERALL GOLD FLASH: (0.00005)/.000002 MIN. OVERALL NICKEL UNDERPLATE: (0.00127)/.000050 MIN.
  - PRODUCT SPEC: PS-10-07
  - PACKAGING SPECIFICATION: LOOSE TERMINALS: PER FK-2759-001 CHAIN FORM TERMINALS: PER FK-2759-002
  - CRIMP IS FOR 22-30 GA WIRE WITH (1.57)/.062 DIA INSULATION MAX.
  - INSERTION FORCE OF TERMINAL INTO (2.54)/.100 CENTERLINE CONNECTOR IS 2.5 LBS. MAX
  - TERMINAL RETENTION IN HOUSING IS 26.7N / 6LBS MIN. WHEN PULLED AT THE RATE OF (25.4MM) / 1 INCH PER MINUTE.
  - DIMENSIONS GIVEN ACROSS CENTERLINES ARE SYMMETRICAL ABOUT THOSE CENTERLINES WITHIN HALF THE TOTAL TOLERANCE.
  - THIS PART CONFORMS TO CLASS B REQUIREMENTS OF COSMETIC SPECIFICATION PS-45499-002.

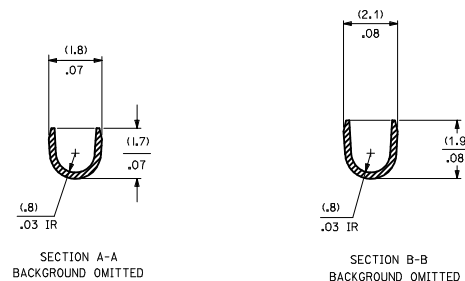
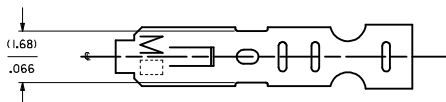
SELECT GOLD LOCATION



CRIMP DETAIL



CRIMPED TERMINAL 2759-(P909)C IS USED WITHOUT WIRE AND IS INSERTED INTO HOUSING TO PROVIDE TENSION WHEN ASSEMBLED TO HEADERS DURING SHIPMENT.



SECTION A-A  
BACKGROUND OMITTED

SECTION B-B  
BACKGROUND OMITTED

2759-(\*\*\*)\*

- FORM
- L=LOOSE
  - C=LOOSE CRIMPED
  - A=CHAIN, PER WINDING DETAIL 'A'
  - B=CHAIN, PER WINDING DETAIL 'B'
- PLATING
- SEE NOTE 2

ADD WINDING DETAIL EEC NO. UCF2014-4731 DRAWN BY: CHYKONGUEN CHECKED BY: CHYKONGUEN APPR:FSMTH DATE: 2014/04/07 DATE: 2014/04/08 DATE: 2014/04/21	QUALITY SYMBOLS ∇=0 ∇=0 ∇=0	GENERAL TOLERANCES (UNLESS SPECIFIED)		DIMENSION STYLE MM/IN	SCALE	DESIGN UNITS INCH	THIRD ANGLE PROJECTION
		4 PLACES ±.010 3 PLACES ±.010 2 PLACES ±0.25 ±.014 1 PLACE ±0.36 ±.014 0 PLACE ±.010 ±.014	mm INCH --- --- --- --- --- --- --- ---	DRAWN BY: SAMIEC CHECKED BY: PATEL APPROVED BY: FSMITH DATE: 07/28/87 DATE: 07/28/87 DATE: 2012/03/20	TITLE CRIMP TERMINAL 22-30 GA WIRE	MATERIAL NO. SEE CHART	DOCUMENT NO. SD-2759

