



Chipsmall Limited consists of a professional team with an average of over 10 year of expertise in the distribution of electronic components. Based in Hongkong, we have already established firm and mutual-benefit business relationships with customers from,Europe,America and south Asia,supplying obsolete and hard-to-find components to meet their specific needs.

With the principle of “Quality Parts,Customers Priority,Honest Operation,and Considerate Service”,our business mainly focus on the distribution of electronic components. Line cards we deal with include Microchip,ALPS,ROHM,Xilinx,Pulse,ON,Everlight and Freescale. Main products comprise IC,Modules,Potentiometer,IC Socket,Relay,Connector.Our parts cover such applications as commercial,industrial, and automotives areas.

We are looking forward to setting up business relationship with you and hope to provide you with the best service and solution. Let us make a better world for our industry!



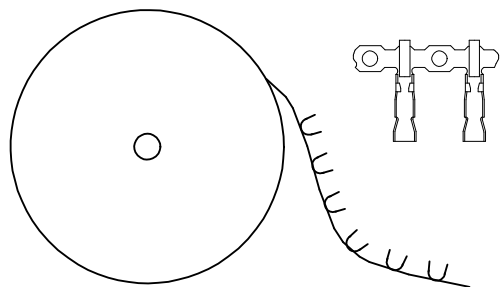
Contact us

Tel: +86-755-8981 8866 Fax: +86-755-8427 6832

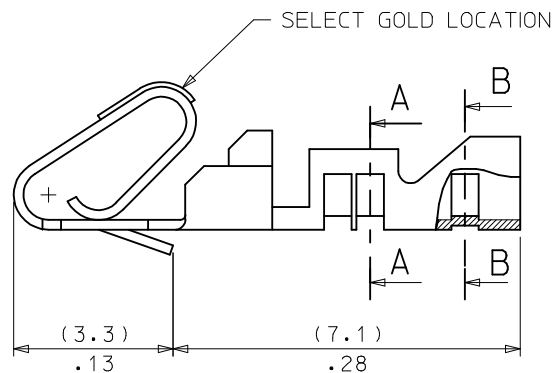
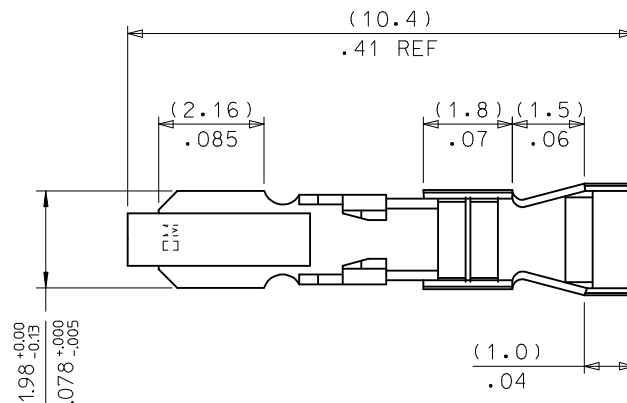
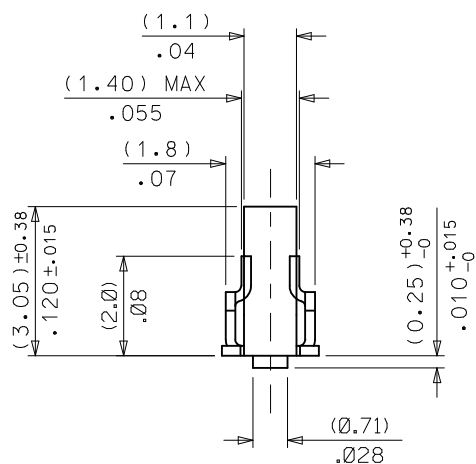
Email & Skype: info@chipsmall.com Web: www.chipsmall.com

Address: A1208, Overseas Decoration Building, #122 Zhenhua RD., Futian, Shenzhen, China





TOP FEEDING REEL WINDING DIRECTION



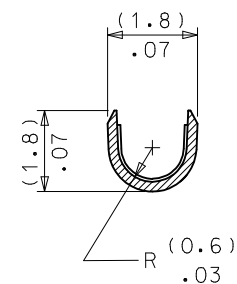
PART No.	ENG No.	FORM	FINISH
08-65-0105	8088-(555)	CHAIN	555
08-65-0106	8088-(555)L	LOOSE	

LEGEND

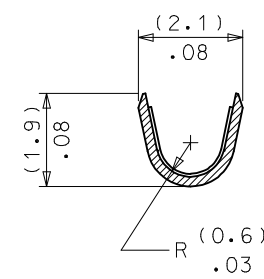
8088-(***)*

PLATING CODE

BLANK = CHAIN FORM, TOP
FEEDING REEL
L = LOOSE FORM



A-A



B-B

NOTES:

1. MATERIAL: PHOS. BRONZE

2. FINISH:

555 = 0.00038/.000015 MIN. SELECT GOLD IN CONTACT AREA
OVER (0.00076)/.000030 MIN. NICKEL OVERALL

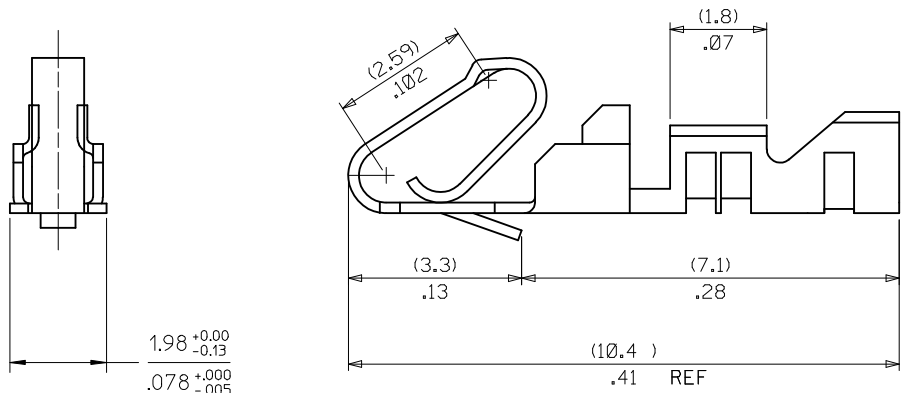
3. PRODUCT SPECIFICATION: PS-99020-0088.

4. FOR 22-30 AWG WIRE: (1.57)/.062 DIA MAX INSULATION

5. THIS PART CONFORMS TO CLASS B REQUIREMENTS OF
MOLEX COSMETIC SPECIFICATION PS-45499-002.

CUT-OFF TOLERANCE EC NO: UCP2013-5579 DRWN:MKIPPER 2013/06/27 CHKD:JBELL 2013/06/27 APPR:FSMITH 2013/07/16	DESCRIPTION	QUALITY SYMBOLS	GENERAL TOLERANCES (UNLESS SPECIFIED)				DIMENSION STYLE		SCALE	DESIGN UNITS	THIRD ANGLE PROJECTION	
							MM/IN		10:1	METRIC		
							DRAWN BY DATE		TITLE KK (2.54)/.100 ANTI-FISH HOOKING TERMINAL 22-30 AWG			
							T.MAHON 1998/10/26					
							CHECKED BY DATE		molex			
							DMORIARTY 2006/09/14					
							APPROVED BY DATE		DOCUMENT NO. SD-8088-****			
							JDENNEHY 2006/09/14					
							MATERIAL NO.		SHEET NO. 1 OF 1			
							SEE CHART					
REV	SIZE	DRAFT WHERE APPLICABLE MUST REMAIN WITHIN DIMENSIONS				THIS DRAWING CONTAINS INFORMATION THAT IS PROPRIETARY TO MOLEX INCORPORATED AND SHOULD NOT BE USED WITHOUT WRITTEN PERMISSION						

PART No.	ENG No.	FORM	FINISH SEE NOTE 2
08-52-0105	8088C-(P918)	CHAIN	(P918)
08-52-0106	8088C-(P918)L	LOOSE	(P918)



LEGEND

8088C-(***)*

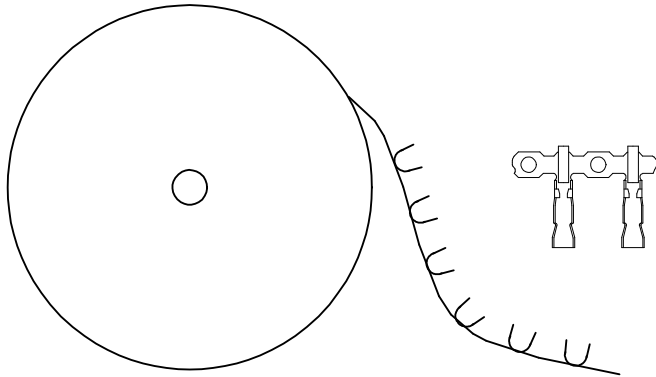
CAT EAR

PLATING CODE

BLANK = CHAIN FORM, TOP FEEDING REEL

L = LOOSE FORM

- NOTES:
1. MATERIAL: PHOS. BRONZE ALLOY
 2. FINISH:
(P918) = HOT TIN DIP (0.00102-0.00305)/.000040-.000120
 3. PRODUCT SPECIFICATION: PS-99020-0088
 4. SAME AS SD-8088-**** EXCEPT CAT EARS.
SEE SD-8088-**** FOR OTHER DIMENSIONS.
 5. FOR 22-30 AWG WIRE, (1.57)/.062 MAX DIA INSULATION
 6. THIS PART CONFORMS TO CLASS B REQUIREMENTS OF COSMETIC SPECIFICATION PS-45499-002.



CUT-OFF TOLERANCE EC NO: UCP2013-5579 DRAWN:MK IPPER 2013/06/27 CHKD: J.BELL 2013/06/27 APPR:FSM TH 2013/07/16	DESCRIPTION	REV	QUALITY SYMBOLS	GENERAL TOLERANCES (UNLESS SPECIFIED)		DIMENSION STYLE MM ONLY		SCALE 10:1	DESIGN UNITS METRIC	THIRD ANGLE PROJECTION					
					mm	INCH	DRAWN BY	DATE	TITLE TERMINAL - ANTI FISH HOOKING KK .100 CTR REF WITH CAT EARS molex						
				4 PLACES	± ---	± ---	T.MAHON	1998/10/26							
				3 PLACES	± ---	± .010	CHECKED BY	DATE							
				2 PLACES	± 0.25	± .020	D.MORIARTY	2006/09/14							
				1 PLACE	± 0.51	± ---	APPROVED BY	DATE							
							0 PLACE	±	±	JDENNEHY	2006/09/14	DOCUMENT NO. SD-8088C-****			
				ANGULAR ±1/2°		MATERIAL NO.		SHEET NO. 1 OF 1							
				DRAFT WHERE APPLICABLE MUST REMAIN WITHIN DIMENSIONS		SIZE B		THIS DRAWING CONTAINS INFORMATION THAT IS PROPRIETARY TO MOLEX INCORPORATED AND SHOULD NOT BE USED WITHOUT WRITTEN PERMISSION							