



Chipsmall Limited consists of a professional team with an average of over 10 year of expertise in the distribution of electronic components. Based in Hongkong, we have already established firm and mutual-benefit business relationships with customers from,Europe,America and south Asia,supplying obsolete and hard-to-find components to meet their specific needs.

With the principle of “Quality Parts,Customers Priority,Honest Operation,and Considerate Service”,our business mainly focus on the distribution of electronic components. Line cards we deal with include Microchip,ALPS,ROHM,Xilinx,Pulse,ON,Everlight and Freescale. Main products comprise IC,Modules,Potentiometer,IC Socket,Relay,Connector.Our parts cover such applications as commercial,industrial, and automotives areas.

We are looking forward to setting up business relationship with you and hope to provide you with the best service and solution. Let us make a better world for our industry!



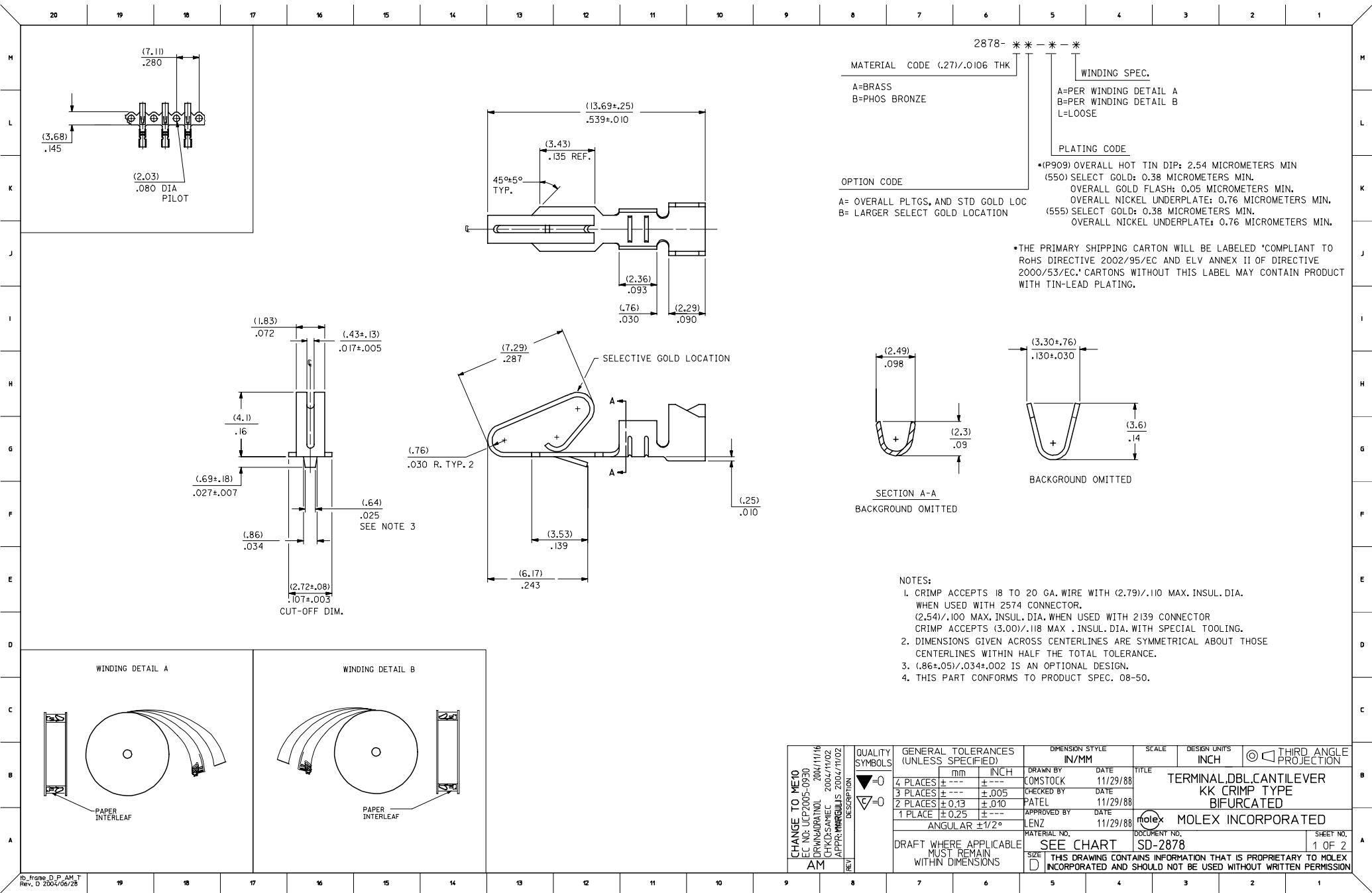
Contact us

Tel: +86-755-8981 8866 Fax: +86-755-8427 6832

Email & Skype: info@chipsmall.com Web: www.chipsmall.com

Address: A1208, Overseas Decoration Building, #122 Zhenhua RD., Futian, Shenzhen, China





[illegible]

CHANGE TO MEIO EC NO: UCP2005-0930 DEPNAPRATOL 2004/11/16 CHKD-SAMES 2004/11/02 APPR-JANQUES 2004/11/02 AM	QUALITY SYMBOLS	GENERAL TOLERANCES (UNLESS SPECIFIED)		DIMENSION STYLE IN/MM		SCALE	DESIGN UNITS INCH	THIRD ANGLE PROJECTION	
	 	mm	INCH	DRAWN BY	DATE	TITLE	TERMINAL DBL CANTILEVER KK CRIMP TYPE BIFURCATED		
		4 PLACES	±	±	COMSTOCK	11/04/88			
		3 PLACES	±	±	CHECKED BY	DATE			
		2 PLACES	±	±	PATEL	11/04/88			
		1 PLACE	±	±	APPROVED BY	DATE			
		ANGULAR ±1/2°		LENZ	11/04/88		MOLEX INCORPORATED		
		DRAFT WHERE APPLICABLE MUST REMAIN WITHIN DIMENSIONS		MATERIAL NO. SEE CHARTS		DOCUMENT NO. SD-2878		SHEET NO. 2	
				SIZE D		THIS DRAWING CONTAINS INFORMATION THAT IS PROPRIETARY TO MOLEX INCORPORATED AND SHOULD NOT BE USED WITHOUT WRITTEN PERMISSION			