



Chipsmall Limited consists of a professional team with an average of over 10 year of expertise in the distribution of electronic components. Based in Hongkong, we have already established firm and mutual-benefit business relationships with customers from,Europe,America and south Asia,supplying obsolete and hard-to-find components to meet their specific needs.

With the principle of “Quality Parts,Customers Priority,Honest Operation,and Considerate Service”,our business mainly focus on the distribution of electronic components. Line cards we deal with include Microchip,ALPS,ROHM,Xilinx,Pulse,ON,Everlight and Freescale. Main products comprise IC,Modules,Potentiometer,IC Socket,Relay,Connector.Our parts cover such applications as commercial,industrial, and automotives areas.

We are looking forward to setting up business relationship with you and hope to provide you with the best service and solution. Let us make a better world for our industry!



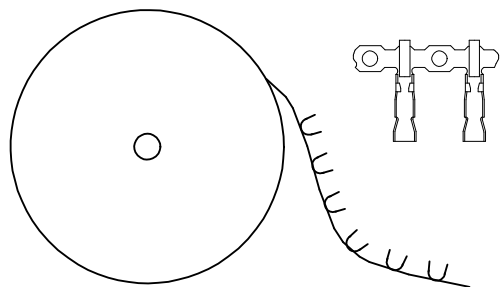
## Contact us

Tel: +86-755-8981 8866 Fax: +86-755-8427 6832

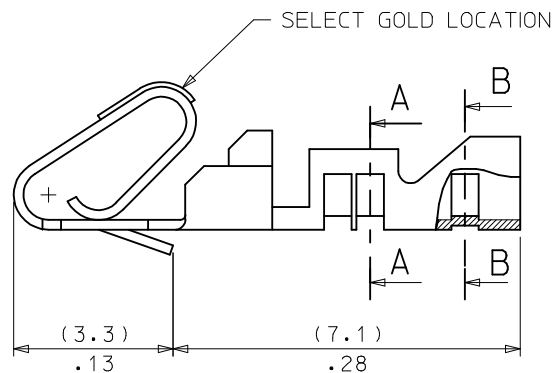
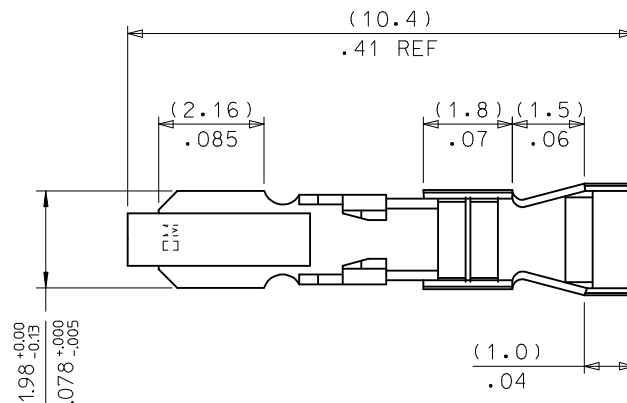
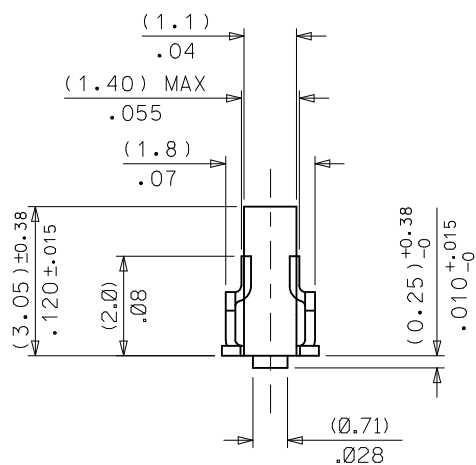
Email & Skype: [info@chipsmall.com](mailto:info@chipsmall.com) Web: [www.chipsmall.com](http://www.chipsmall.com)

Address: A1208, Overseas Decoration Building, #122 Zhenhua RD., Futian, Shenzhen, China





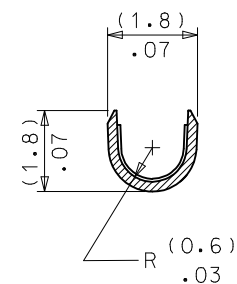
TOP FEEDING REEL WINDING DIRECTION



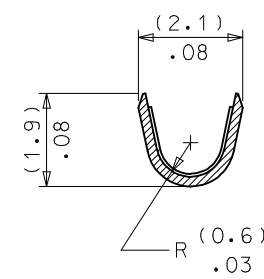
PART No.	ENG No.	FORM	FINISH
08-65-0105	8088-(555)	CHAIN	555
08-65-0106	8088-(555)L	LOOSE	

# LEGEND

8088-(\*\*\*)\*  
PLATING CODE  
BLANK = CHAIN FORM, TOP FEEDING REEL  
L = LOOSE FORM



A-A



B-B

## NOTES:

- MATERIAL: PHOS. BRONZE
- FINISH:  
555 = 0.00038/.000015 MIN. SELECT GOLD IN CONTACT AREA OVER (0.00076)/.000030 MIN. NICKEL OVERALL
- PRODUCT SPECIFICATION: PS-99020-0088.
- FOR 22-30 AWG WIRE: (1.57)/.062 DIA MAX INSULATION
- THIS PART CONFORMS TO CLASS B REQUIREMENTS OF MOLEX COSMETIC SPECIFICATION PS-45499-002.

CUT-OFF TOLERANCE EC NO: UCP2013-5579 DRAWN: KIPPER 2013/06/27 CHKD: JBELL 2013/06/27 APPR: FSMITH 2013/07/16	DESCRIPTION	QUALITY SYMBOLS	GENERAL TOLERANCES (UNLESS SPECIFIED)				DIMENSION STYLE		SCALE	DESIGN UNITS	THIRD ANGLE PROJECTION	
							MM/IN		10:1	METRIC		
							DRAWN BY DATE		TITLE KK (2.54)/.100 ANTI-FISH HOOKING TERMINAL 22-30 AWG <b>molex</b>			
							T. MAHON 1998/10/26					
							CHECKED BY DATE		SHEET NO. 1 OF 1			
							DMORIARTY 2006/09/14					
							APPROVED BY DATE					
							JDENNEHY 2006/09/14					
							MATERIAL NO.		DOCUMENT NO.			
							SEE CHART		SD-8088-****			
				SIZE B		THIS DRAWING CONTAINS INFORMATION THAT IS PROPRIETARY TO MOLEX INCORPORATED AND SHOULD NOT BE USED WITHOUT WRITTEN PERMISSION						