



Chipsmall Limited consists of a professional team with an average of over 10 year of expertise in the distribution of electronic components. Based in Hongkong, we have already established firm and mutual-benefit business relationships with customers from,Europe,America and south Asia,supplying obsolete and hard-to-find components to meet their specific needs.

With the principle of “Quality Parts,Customers Priority,Honest Operation,and Considerate Service”,our business mainly focus on the distribution of electronic components. Line cards we deal with include Microchip,ALPS,ROHM,Xilinx,Pulse,ON,Everlight and Freescale. Main products comprise IC,Modules,Potentiometer,IC Socket,Relay,Connector.Our parts cover such applications as commercial,industrial, and automotives areas.

We are looking forward to setting up business relationship with you and hope to provide you with the best service and solution. Let us make a better world for our industry!



Contact us

Tel: +86-755-8981 8866 Fax: +86-755-8427 6832

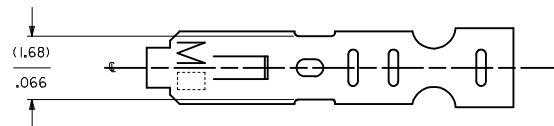
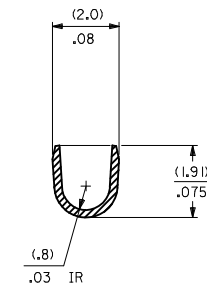
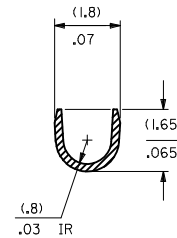
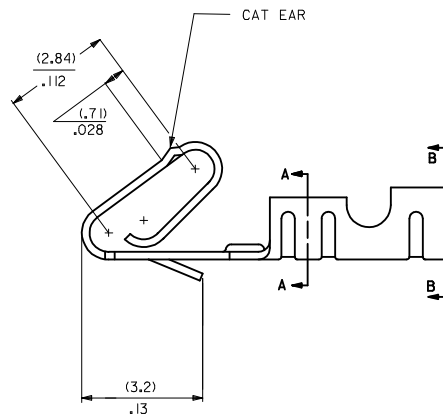
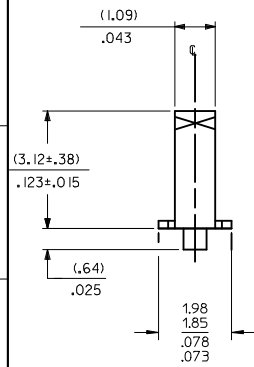
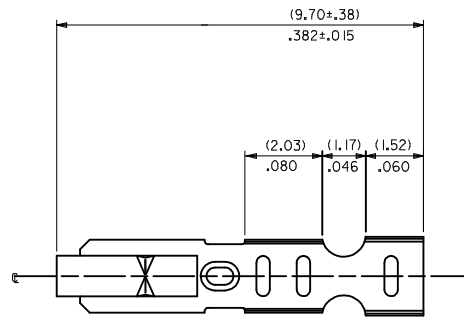
Email & Skype: info@chipsmall.com Web: www.chipsmall.com

Address: A1208, Overseas Decoration Building, #122 Zhenhua RD., Futian, Shenzhen, China



NOTES:

1. MATERIAL: PHOS BRONZE
2. FINISH: SEE LEGEND
3. PRODUCT SPECIFICATION: PS-10-07
4. PACKAGING: LOOSE TERMINALS: PER PK-2759-001
CHAIN FORM TERMINALS: PER PK-6459-001
5. INSERTION FORCE OF TERMINAL INTO (2.54)/.100 CL HOUSING IS 11.1 N / 2.5 LBS MAX.
6. TERMINAL RETENTION IN HOUSING IS 26.7N / 6LBS MIN. WHEN PULLED AT THE RATE OF 25.4MM / 1 INCH PER MINUTE.
7. DIMENSIONS GIVEN ACROSS CENTERLINES ARE SYMMETRICAL ABOUT THOSE CENTERLINES WITHIN HALF THE TOTAL TOLERANCE.
8. CRIMP IS FOR 22-30 GA WIRE WITH (.157)/.062 DIA. INSULATION MAX.
9. THIS PART CONFORMS TO CLASS B REQUIREMENTS OF COSMETIC SPECIFICATION PS-45499-002.



41572-*(***)*

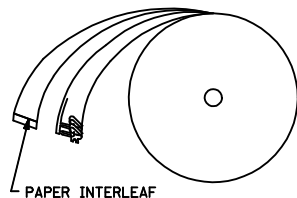
MATERIAL
A= SEE NOTE 1

FORM
L=LOOSE
BLANK=CHAIN PER DETAIL B

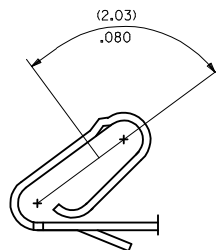
PLATING
(P909) OVERALL HOT TIN DIP: (0.00254)/.000100 MIN.
(154) OVERALL TIN: (0.00254)/.000100 MIN. OVER
(0.00127)/.000050 MIN. NICKEL


PART NO.	ENG NO.
08-65-0804	41572-A(P909)
08-65-0805	41572-A(P909)L
41572-0002	41572-A(154)

WINDING DETAIL B
NOT TO SCALE



SELECT GOLD LOCATION



ADD PK-6459-001 EC NO: UCP2014-0151 DRWN:KIPPER 2013/07/18 CHKD:ANDERSON 2013/07/18 APPR:FSMITH 2013/07/24	DESCRIPTION	QUALITY SYMBOLS <div>▽=0</div> <div>▽=0</div> <div>▽=0</div>	GENERAL TOLERANCES (UNLESS SPECIFIED)			DIMENSION STYLE MM/IN		SCALE 10:1	DESIGN UNITS INCH	<div></div> THIRD ANGLE PROJECTION	
				mm	INCH	DRAWN BY SAMIEC	DATE 1993/03/19	TITLE KK (2.54)/.100 CRIMP TERMINAL 22-30 GA 6459 WITH CAT EAR <div>molex</div> <div>SD-41572</div>			
			4 PLACES	± ---	± ---	CHECKED BY	DATE				
			3 PLACES	± ---	± .010	PATEL	1993/03/19				
			2 PLACES	± 0.25	± .015	APPROVED BY					DATE
			1 PLACE	± 0.38	± ---						
			0 PLACE	±	±						
			ANGULAR ±1/2°			MATERIAL NO.		DOCUMENT NO.			SHEET NO.
			DRAFT WHERE APPLICABLE MUST REMAIN WITHIN DIMENSIONS			SEE CHART					1 OF 1
			G1	REV				SIZE	THIS DRAWING CONTAINS INFORMATION THAT IS PROPRIETARY TO MOLEX INCORPORATED AND SHOULD NOT BE USED WITHOUT WRITTEN PERMISSION		