



Chipsmall Limited consists of a professional team with an average of over 10 year of expertise in the distribution of electronic components. Based in Hongkong, we have already established firm and mutual-benefit business relationships with customers from,Europe,America and south Asia,supplying obsolete and hard-to-find components to meet their specific needs.

With the principle of “Quality Parts,Customers Priority,Honest Operation,and Considerate Service”,our business mainly focus on the distribution of electronic components. Line cards we deal with include Microchip,ALPS,ROHM,Xilinx,Pulse,ON,Everlight and Freescale. Main products comprise IC,Modules,Potentiometer,IC Socket,Relay,Connector.Our parts cover such applications as commercial,industrial, and automotives areas.

We are looking forward to setting up business relationship with you and hope to provide you with the best service and solution. Let us make a better world for our industry!



Contact us

Tel: +86-755-8981 8866 Fax: +86-755-8427 6832

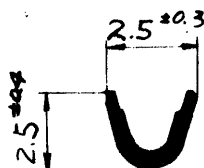
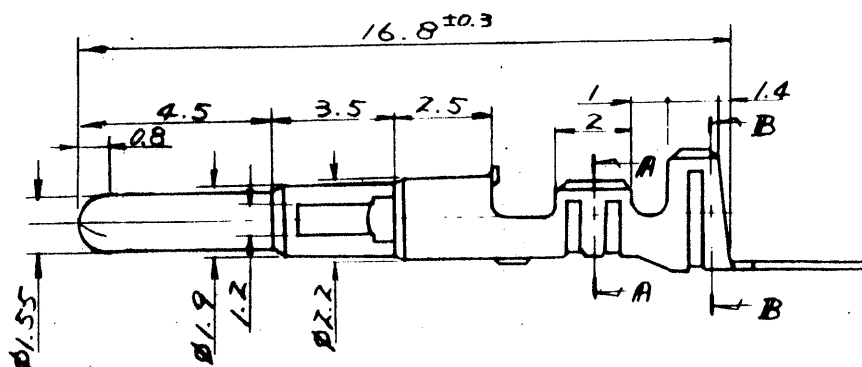
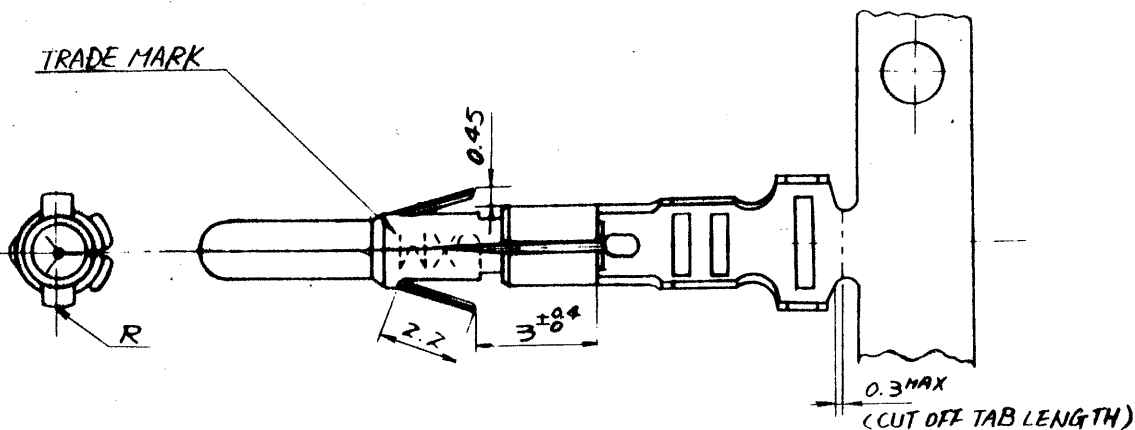
Email & Skype: info@chipsmall.com Web: www.chipsmall.com

Address: A1208, Overseas Decoration Building, #122 Zhenhua RD., Futian, Shenzhen, China

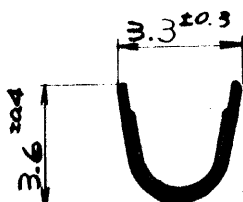


EDP NO. 08-70-***** SD-5006*
 ENG. NO.

TRADE MARK



SECT. "A" - "A"



SECT. "B" - "B"

角度	ANGLE	± 3°
30 以上	OVER	± 0.3
10 以上 30 未満	OVER UNDER	± 0.25
10 未満	UNDER	± 0.2

般公差
GENERAL TOLERANCES

LOOSE	GOLD	08-70-1014	5006 GL
CHAIN	PLATING	08-70-1013	G
LOOSE	PRE-	08-70-0043	TL
CHAIN	TINNED	08-70-0002	5006 T
FORM	FINISH	EDP NO.	ENG NO.

材料
MATERIAL

7/3 BRASS, 0.2t

仕上
FINISH

SEE CHART

適用電線規格
WIRE RANGE

AWG #18 ~ #24

線径外徑
INS. RANGE

φ(1.3) ~ 3

DRAWN BY

SKMishi

APP'D

DATE

CHK

DATE

SCALE

4-1

MOLEX-JAPAN CO., LTD.
日本モレックス株式会社

EDP NO.

08-70-*****

ENG. NO.

SD-5006*

REV

H

TITLE 名称:

MINI FIT PIN

DEIMENSIONS IN METRIC DO NOT SCALE DRAWING

単位: MM

H	REVISED (J91011)	H.N	12/1/30
G	REVISED BY	11/1/30	11/1/30
F	REDAUN NO CHG	11/1/30	11/1/30
E	REDAUN NO CHG	11/1/30	11/1/30
D	REDAUN NO CHG	11/1/30	11/1/30
C	REDAUN NO CHG	11/1/30	11/1/30
B	REDAUN NO CHG	11/1/30	11/1/30
A	REDAUN NO CHG	11/1/30	11/1/30

REVISION RECORD

CHK

DATE

SCALE

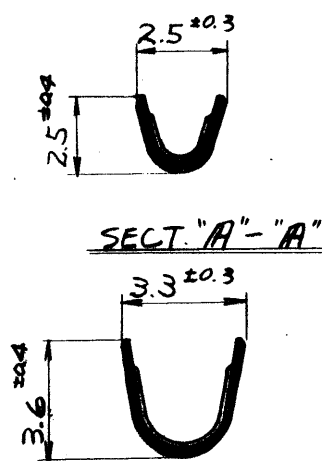
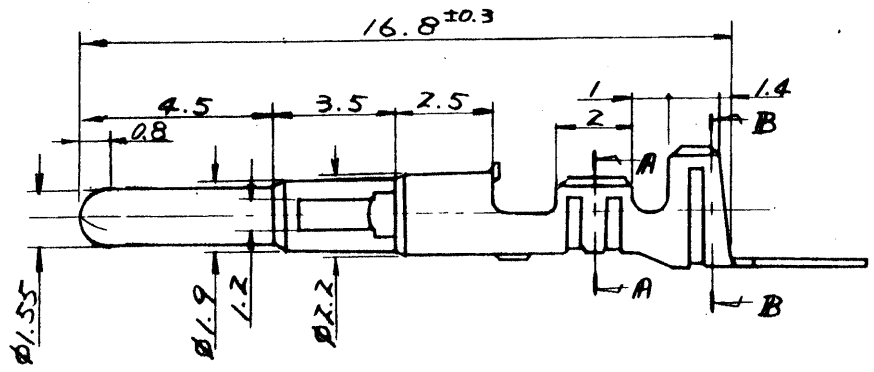
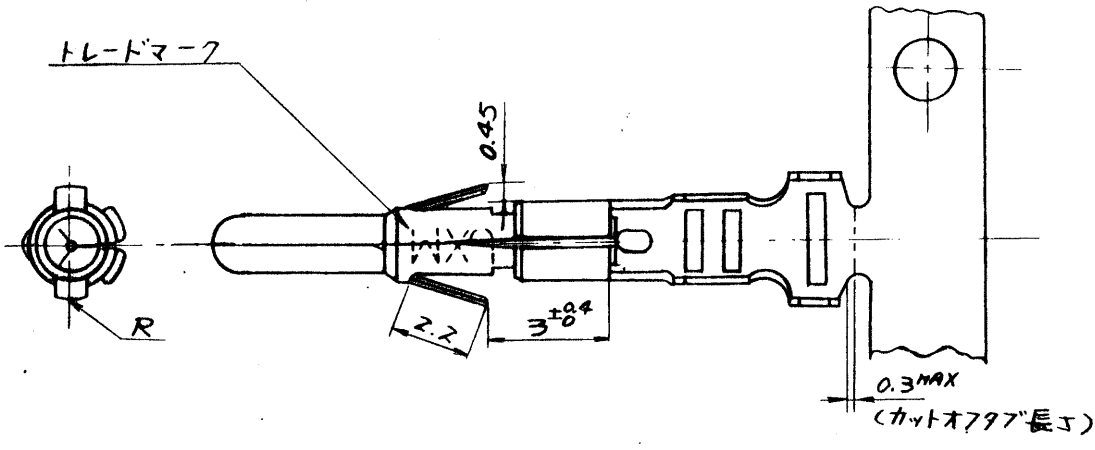
4-1

THIS DRAWING CONTAINS INFORMATION THAT IS PROPRIETARY TO MOLEX AND SHOULD NOT BE USED WITHOUT WRITTEN PERMISSION

EDP NO. 08-70-***** SD-5006*
ENG. NO.

▽

DEMENSIONS IN METRIC DO NOT SCALE DRAWING
単位: MM



角度	ANGLE	± 3°
30 以上	OVER	± 0.3
10 以上 30 未満	OVER UNDER	± 0.25
10 未満	UNDER	± 0.2

一般公差
GENERAL TOLERANCES

バラキ	金メッキ	08-70-1014	5006 GL
連鎖状	金メッキ	08-70-1013	G
バラキ	錫メッキ	08-70-0043	TL
連鎖状	錫メッキ	08-70-0002	5006T
形状	表面処理	EDP NO.	ENG NO.

材料 MATERIAL	仕上 FINISH	適用電線範囲 WIRE RANGE	線径範囲 INS. RANGE	DRAWN BY	CHK'D BY
7/3 黄銅 0.2t	表参照	AWG #18 ~ #24	φ(1.3) ~ 3	SKMISHI	SKMISHI
H 変更 (J91011)		G 変更 (J91011)		F 変更 (J91011)	
REVISED BY		REVISED BY		REVISED BY	
SCN NO. 3722		SCN NO. 3722		SCN NO. 3722	
F. REDAWN W/O CHG		F. REDAWN W/O CHG		F. REDAWN W/O CHG	
記号		記号		記号	
LTR		LTR		LTR	
REVISION RECORD		REVISION RECORD		REVISION RECORD	
CHK		CHK		CHK	
DATE		DATE		DATE	

molex MOLEX-JAPAN CO., LTD. 日本モレックス株式会社	
EDP NO. 08-70-*****	
ENG. NO. SD-5006*	
TITLE 名称: MINI FIT PIN	