



Chipsmall Limited consists of a professional team with an average of over 10 year of expertise in the distribution of electronic components. Based in Hongkong, we have already established firm and mutual-benefit business relationships with customers from,Europe,America and south Asia,supplying obsolete and hard-to-find components to meet their specific needs.

With the principle of “Quality Parts,Customers Priority,Honest Operation,and Considerate Service”,our business mainly focus on the distribution of electronic components. Line cards we deal with include Microchip,ALPS,ROHM,Xilinx,Pulse,ON,Everlight and Freescale. Main products comprise IC,Modules,Potentiometer,IC Socket,Relay,Connector.Our parts cover such applications as commercial,industrial, and automotives areas.

We are looking forward to setting up business relationship with you and hope to provide you with the best service and solution. Let us make a better world for our industry!



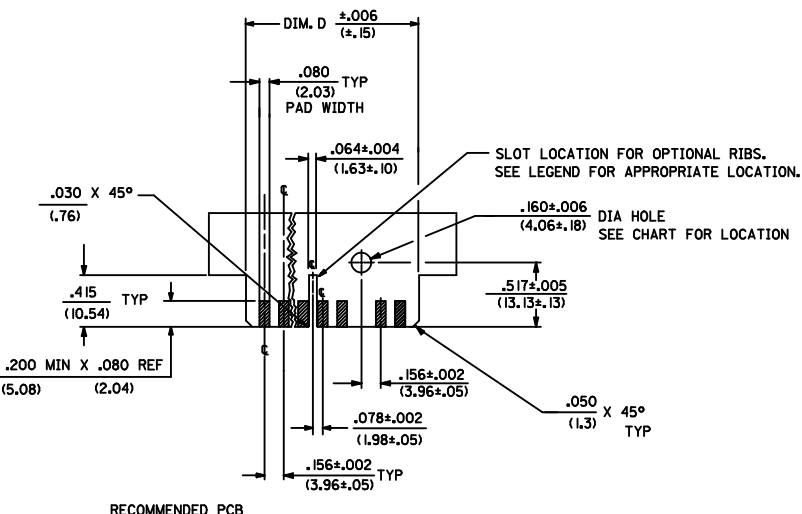
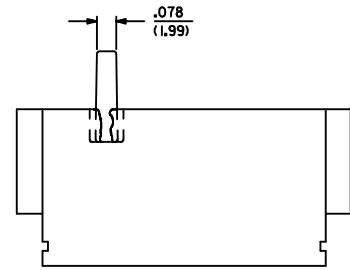
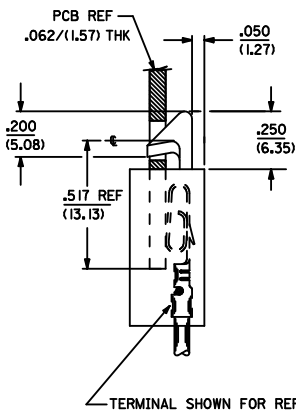
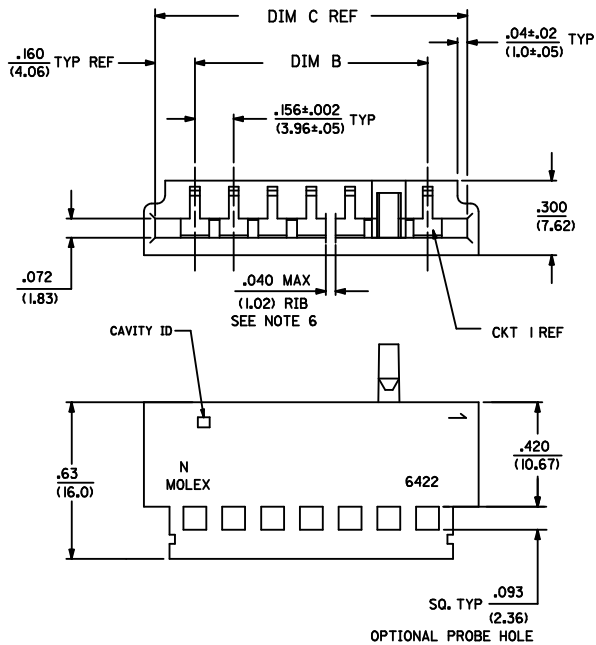
## Contact us

Tel: +86-755-8981 8866 Fax: +86-755-8427 6832

Email & Skype: info@chipsmall.com Web: www.chipsmall.com

Address: A1208, Overseas Decoration Building, #122 Zhenhua RD., Futian, Shenzhen, China





- NOTES:
1. MATERIAL: UNFILLED NYLON, UL94V-2, COLOR: NATURAL
  2. FINISH: N/A
  3. THIS PART CONFORMS TO PS-08-50.
  4. PACKAGING SPECIFICATION: PK-6422-001
  5. CONNECTOR TO BE USED WITH CRIMP TERMINAL SERIES 2878, 2478, 2578
  6. RIB WIDTH .040 / 1.02 REF. EXCEPT WHEN RIB IS ADJACENT TO THE HOOK. THEN RIB WIDTH IS .025 ±.006 / 0.64 ±.015
  7. DIMENSIONS GIVEN ACROSS CENTERLINES ARE SYMMETRICAL ABOUT THOSE CENTERLINES WITHIN ONE HALF THE TOTAL TOLERANCE.
  8. FOR THIS PART WITHOUT HOOK, SEE 2574 SERIES.
  9. THIS PART CONFORMS TO CLASS B REQUIREMENTS OF COSMETIC SPECIFICATION PS-45499-002.

NO. OF CKT'S	DIM. C	DIM. B	DIM. D
3	.632 (16.05)	.312±.002 (7.92±.05)	.618 (15.70)
4	.788 (20.02)	.468±.002 (11.89±.05)	.774 (19.66)
5	.944 (23.98)	.624±.003 (15.85±.08)	.922 (23.42)
6	1.100 (27.94)	.780±.003 (19.81±.08)	1.078 (27.38)
7	1.256 (31.90)	.936±.003 (23.77±.08)	1.232 (31.29)
8	1.412 (35.86)	1.092±.004 (27.74±.10)	1.388 (35.26)
9	1.568 (39.83)	1.248±.004 (31.70±.10)	1.544 (39.22)
10	1.724 (43.79)	1.404±.006 (35.66±.15)	1.700 (43.18)
11	1.880 (47.75)	1.560±.006 (39.62±.15)	1.854 (47.09)
12	2.036 (51.71)	1.716±.006 (43.59±.15)	2.010 (51.05)
13	2.192 (55.68)	1.872±.006 (47.55±.15)	2.164 (54.97)
14	2.348 (59.64)	2.028±.007 (51.51±.18)	2.318 (58.88)
15	2.504 (63.60)	2.184±.007 (55.47±.18)	2.474 (62.84)
16	2.660 (67.56)	2.340±.007 (59.44±.18)	2.631 (66.83)
17	2.816 (71.53)	2.496±.008 (63.40±.20)	2.784 (70.71)
18	2.972 (75.49)	2.652±.009 (67.36±.23)	2.954 (75.03)
19	3.128 (79.45)	2.808±.009 (71.32±.23)	3.095 (78.61)
20	3.284 (83.41)	2.964±.009 (75.29±.23)	3.251 (82.58)
21	3.440 (87.38)	3.120±.010 (79.25±.25)	3.407 (86.54)
22	3.596 (91.34)	3.276±.011 (83.21±.25)	3.562 (90.47)
23	3.752 (95.30)	3.432±.011 (87.17±.28)	3.716 (94.39)
24	3.908 (99.26)	3.588±.012 (91.14±.30)	3.871 (98.32)

<b>ADD NOTES</b> EC NO. UCF2012-3660 DRAWN/KIPPER 2012/05/10 CHKD/BANDERSON 2012/05/10 APPR/FSMTH 2012/05/22	<b>QUALITY SYMBOLS</b> ▽=0 ▽=0 ▽=0	<b>GENERAL TOLERANCES (UNLESS SPECIFIED)</b> <table border="1"> <tr><th></th><th>mm</th><th>INCH</th></tr> <tr><td>4 PLACES</td><td>±.010</td><td>±.010</td></tr> <tr><td>3 PLACES</td><td>±.025</td><td>±.014</td></tr> <tr><td>2 PLACES</td><td>±.036</td><td>±.014</td></tr> <tr><td>1 PLACE</td><td>±.050</td><td>±.014</td></tr> <tr><td>0 PLACE</td><td>±.075</td><td>±.014</td></tr> </table>			mm	INCH	4 PLACES	±.010	±.010	3 PLACES	±.025	±.014	2 PLACES	±.036	±.014	1 PLACE	±.050	±.014	0 PLACE	±.075	±.014	<b>DIMENSION STYLE</b> IN/MM	<b>SCALE</b> 4:1	<b>DESIGN UNITS</b> INCH	THIRD ANGLE PROJECTION
			mm	INCH																					
4 PLACES	±.010	±.010																							
3 PLACES	±.025	±.014																							
2 PLACES	±.036	±.014																							
1 PLACE	±.050	±.014																							
0 PLACE	±.075	±.014																							
DRAWN BY DATE SAMIEC PEREZ 1994/06/09 CHECKED BY DATE PATEL 1994/06/09 APPROVED BY DATE	<b>MATERIAL NO.</b> SEE CHART		<b>DOCUMENT NO.</b> SD-6422		<b>SHEET NO.</b> 1 OF 2																				

EDGE CARD CONNECTOR  
 .156/(3.96) CL CRIMP  
 2574 WITH HOOK  
**molex**  
 INCORPORATED AND SHOULD NOT BE USED WITHOUT WRITTEN PERMISSION

6422 - N \* \* - \*

NO. OF CIRCUITS  
HOOK LOCATION CODE  
(ON € OF CKT)

CODE	ON CKT
A	2
B	3
C	4
D	5
E	6
F	7
G	8
H	9
J	10

PROBE HOLE  
BLANK=WITHOUT HOLE  
A= WITH HOLE

RIB LOCATION CODE (BETWEEN CKTS)

CODE	BTWN CKTS
1	N/A
2	2&3
3	2&3
4	3&4 5&6
5	4&5 7&8
6	6&7 RIB RECESSED .075 OFF OF TOP OF PART
7	4&5 7&8 11&12

EDP NO.	ENG. NO.	CKTS
009-01-1038	6422-3A1	3
009-01-1036	6422-3A1-A	3
009-01-1058	6422-5A1	5
009-01-1156	6422-15H1-A	15
009-01-1068	6422-6A1	6
009-01-1067	6422-6C2	6
009-01-1098	6422-9C4	9
009-01-1096	6422-9C4-A	9
009-01-1108	6422-10H5	10
009-01-1128	6422-12H6	12
009-01-1056	6422-5A1-A	5
009-01-1158	6422-15H7	15

D SEE SHEET 1

DESIGNER: [ ]	DATE: [ ]	REV. [ ]	LTR. [ ]	REVISIONS [ ]
TITLE: EDGE CARD CONNECTOR (3.96) / .156 & CRIMP TYPE 2574 WITH HOOK				
MOLEX INCORPORATED				DATE: 6/8/95
SEE CHART				SD: 6422
FOR ALL INFORMATION CONTACT THE DESIGN ENGINEER OR THE PROJECT MANAGER				