



Chipsmall Limited consists of a professional team with an average of over 10 year of expertise in the distribution of electronic components. Based in Hongkong, we have already established firm and mutual-benefit business relationships with customers from,Europe,America and south Asia,supplying obsolete and hard-to-find components to meet their specific needs.

With the principle of “Quality Parts,Customers Priority,Honest Operation,and Considerate Service”,our business mainly focus on the distribution of electronic components. Line cards we deal with include Microchip,ALPS,ROHM,Xilinx,Pulse,ON,Everlight and Freescale. Main products comprise IC,Modules,Potentiometer,IC Socket,Relay,Connector.Our parts cover such applications as commercial,industrial, and automotives areas.

We are looking forward to setting up business relationship with you and hope to provide you with the best service and solution. Let us make a better world for our industry!



Contact us

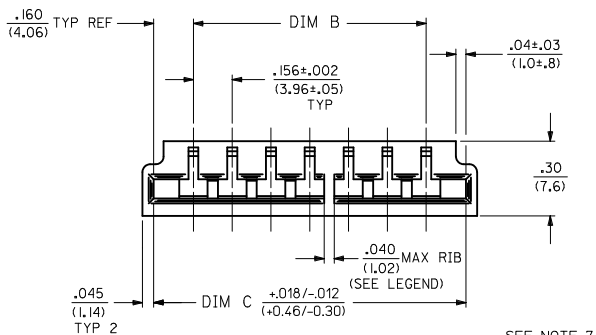
Tel: +86-755-8981 8866 Fax: +86-755-8427 6832

Email & Skype: info@chipsmall.com Web: www.chipsmall.com

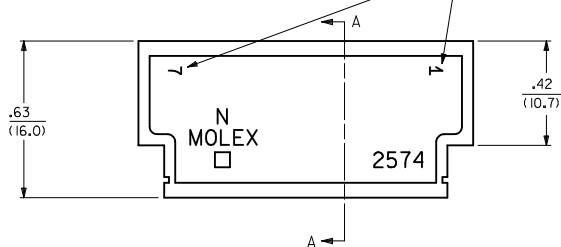
Address: A1208, Overseas Decoration Building, #122 Zhenhua RD., Futian, Shenzhen, China



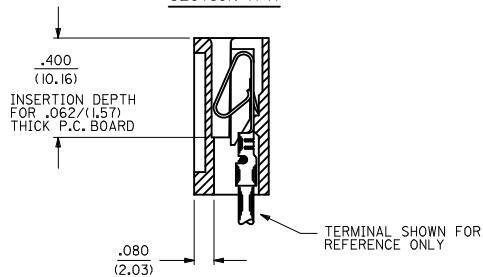
- NOTES:
 1. MATERIAL: UL 94V-0 NYLON, GLOW WIRE CAPABLE.
 2. FINISH: N/A
 3. THIS PRODUCT CONFORMS TO MOLEX PROD. SPEC. PS-08-50.
 4. PACKAGING: BULK, PER PK-2574-001
 5. CONNECTOR TO BE USED WITH CRIMP TERMINALS:
 2478-*w*: 18-24 GA. WIRE, .110/(2.79) MAX INSULATION DIAMETER.
 2578-*w*: 22-26 GA. WIRE, .065/(1.65) MAX INSULATION DIAMETER.
 6. DIMENSIONS GIVEN ACROSS CENTERLINES ARE SYMMETRICAL ABOUT THOSE CENTERLINES WITHIN ONE HALF THE TOTAL TOLERANCE.
 7. PARTS LESS THAN 7 CIRCUITS ARE TO INDICATE ONLY CIRCUIT NO. 1. ALL OTHERS ARE TO IDENTIFY BOTH THE FIRST AND LAST CIRCUITS.
 8. THIS PART CONFORMS TO CLASS B REQUIREMENTS OF COSMETIC SPECIFICATION PS-45499-002.



SEE NOTE 7



SECTION A-A



2574 - N * * BK A

NO. OF CIRCUITS

UL 94V-0 NYLON

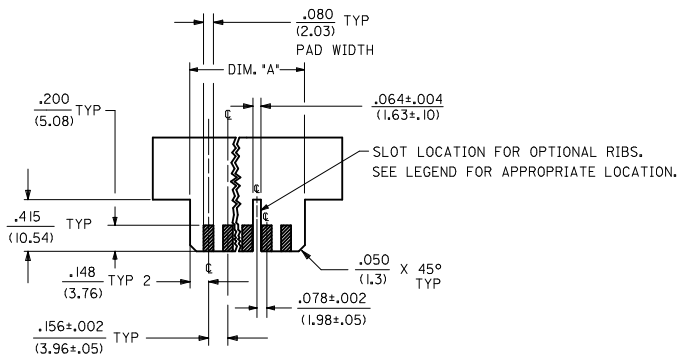
OPTION CODE

COLOR CODE
BK=BLACK

CODE	MOUNTING EARS	CHAMFERED SLOT	PCB THK	MOUNTING HOLES
A	NO	NO	.062	NO

RIB LOCATION CODE (BETWEEN CKTS)

- 1 = NONE
- 2 = 2-3
- 3 = 3-4
- 4 = 5-6
- 5 = 3-4, 5-6
- 6 = 4-5, 7-8
- 7 = 5-6, 8-9
- 8 = 5-6, 10-11
- 9 = 4-5, 7-8, 11-12
- 10 = 5-6, 10-11, 14-15
- 11 = 5-6, 10-11, 15-16
- 12 = 5-6, 11-12, 16-17
- 13 = 5-6, 11-12, 17-18
- 14 = 4-5, 7-8, 11-12, 15-16
- 15 = 4-5, 8-9, 12-13, 16-17, 20-21
- 16 = 5-6, 11-12, 18-19



RECOMMENDED CARD LAYOUT
SCALE 2:1

2574-NA*

PART NO.	ENG. NO. (SUFFIX ONLY)	NO. OF CKTS	DIM A	DIM B	DIM C
09-01-6229	-22A12BKA	22	3.562 (90.47)	3.276±.011 (83.21±0.25)	3.596 (91.34)

ADD PKG. SPEC. EC NO. UCF2012-3660 DRAWN BY DRW/KK/PPER CHKD BY CHYD/BANDERSON APPR:FSM/TH 2012/05/12	QUALITY SYMBOLS ▽=0 ▽=0 ▽=0	GENERAL TOLERANCES (UNLESS SPECIFIED)		DIMENSION STYLE IN/MM		SCALE 4:1	DESIGN UNITS INCH	THIRD ANGLE PROJECTION
		mm	INCH	DATE	DATE	DATE	DATE	
	4 PLACES ±.010	4 PLACES ±.010	LSCHMIDT	2005/06/03				
	3 PLACES ±.015	3 PLACES ±.015	ADERR	2005/06/13				
	2 PLACES ±.025	2 PLACES ±.025	APPROVED BY	DATE				
	1 PLACE ±.036	1 PLACE ±.036	FSMITH	2005/06/14				
	0 PLACE ±	0 PLACE ±						
	ANGULAR ±1/2°		MATERIAL NO.		DOCUMENT NO.		SHEET NO.	
	DRAFT WHERE APPLICABLE MUST REMAIN WITHIN DIMENSIONS		SEE CHART		SD-2574-001		1 OF 1	
	THIS DRAWING CONTAINS INFORMATION THAT IS PROPRIETARY TO MOLEX INCORPORATED AND SHOULD NOT BE USED WITHOUT WRITTEN PERMISSION							

EDGE CARD CONNECTOR
(3.96)/.156 CENTER
CRIMP TYPE - 2574 SERIES

molex