



Chipsmall Limited consists of a professional team with an average of over 10 year of expertise in the distribution of electronic components. Based in Hongkong, we have already established firm and mutual-benefit business relationships with customers from,Europe,America and south Asia,supplying obsolete and hard-to-find components to meet their specific needs.

With the principle of “Quality Parts,Customers Priority,Honest Operation,and Considerate Service”,our business mainly focus on the distribution of electronic components. Line cards we deal with include Microchip,ALPS,ROHM,Xilinx,Pulse,ON,Everlight and Freescale. Main products comprise IC,Modules,Potentiometer,IC Socket,Relay,Connector.Our parts cover such applications as commercial,industrial, and automotives areas.

We are looking forward to setting up business relationship with you and hope to provide you with the best service and solution. Let us make a better world for our industry!



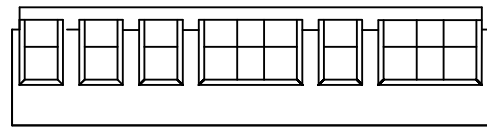
## Contact us

Tel: +86-755-8981 8866 Fax: +86-755-8427 6832

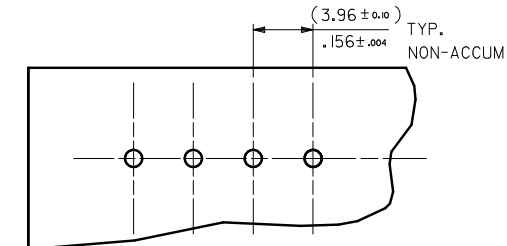
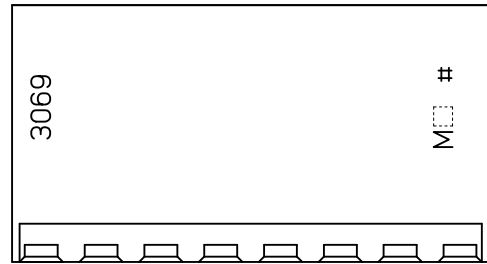
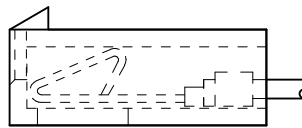
Email & Skype: info@chipsmall.com Web: www.chipsmall.com

Address: A1208, Overseas Decoration Building, #122 Zhenhua RD., Futian, Shenzhen, China

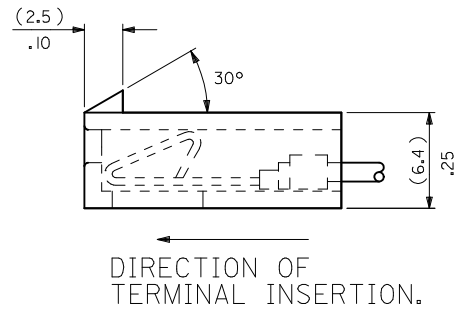
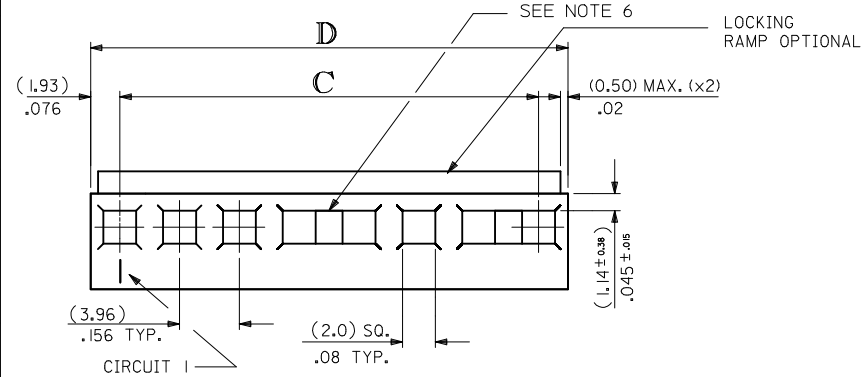




OPTIONAL WINDOW DETAIL

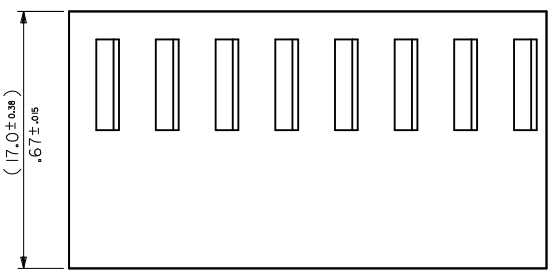


RECOMMENDED P/C BOARD



- NOTES:
1. MATERIAL: UL94V-2 NYLON, IEC 60335-1 5TH EDITION GLOW WIRE CAPABLE, COLOR: BLACK
  2. FINISH: N/A
  3. PRODUCT SPECIFICATION: PS-99020-0087
  4. FOR USE WITH TERMINAL No. 2478 OR 2578
  5. ASSEMBLED CONNECTOR MATES WITH (1.14)/0.045 SQUARE OR ROUND PIN.
  6. EXTENDED PIN ENTRY WINDOWS ARE POSSIBLE.
  7. THIS PART CONFORMS TO CLASS B REQUIRMENTS OF COSMETIC SPECIFICATION PS-45499-002.

No. OF CCTS.	C	D
2	$(3.96 \pm 0.13)$ .156 ±.005	$(7.82 \pm 0.25)$ .308 ±.010
3	$(7.92 \pm 0.13)$ .312 ±.005	$(11.79 \pm 0.25)$ .464 ±.010
4	$(11.89 \pm 0.13)$ .468 ±.005	$(15.75 \pm 0.25)$ .620 ±.010
5	$(15.85 \pm 0.13)$ .624 ±.005	$(19.71 \pm 0.25)$ .776 ±.010
6	$(19.81 \pm 0.13)$ .780 ±.005	$(23.67 \pm 0.25)$ .932 ±.010
7	$(23.77 \pm 0.13)$ .936 ±.005	$(27.64 \pm 0.31)$ 1.088 ±.012
8	$(27.74 \pm 0.25)$ 1.092 ±.010	$(31.60 \pm 0.31)$ 1.244 ±.012
9	$(31.70 \pm 0.25)$ 1.248 ±.010	$(35.56 \pm 0.31)$ 1.400 ±.012
10	$(35.66 \pm 0.25)$ 1.404 ±.010	$(39.52 \pm 0.31)$ 1.556 ±.012
11	$(39.62 \pm 0.25)$ 1.560 ±.010	$(43.48 \pm 0.31)$ 1.712 ±.012
12	$(43.59 \pm 0.25)$ 1.716 ±.010	$(47.45 \pm 0.31)$ 1.868 ±.012
13	$(47.55 \pm 0.31)$ 1.872 ±.012	$(51.41 \pm 0.36)$ 2.024 ±.014
14	$(51.51 \pm 0.36)$ 2.028 ±.014	$(55.37 \pm 0.36)$ 2.180 ±.014
15	$(55.47 \pm 0.36)$ 2.184 ±.014	$(59.33 \pm 0.36)$ 2.336 ±.014
16	$(59.44 \pm 0.36)$ 2.340 ±.014	$(63.30 \pm 0.36)$ 2.492 ±.014
17	$(63.40 \pm 0.36)$ 2.496 ±.014	$(67.26 \pm 0.36)$ 2.648 ±.014
18	$(67.36 \pm 0.36)$ 2.652 ±.014	$(71.22 \pm 0.36)$ 2.804 ±.014
19	$(71.32 \pm 0.36)$ 2.808 ±.014	$(75.18 \pm 0.36)$ 2.960 ±.014
20	$(75.29 \pm 0.36)$ 2.964 ±.014	$(79.15 \pm 0.46)$ 3.116 ±.018



<b>ADD NOTES</b> IEC NO: UCP2012-3738 DRW:MKLPPER 2012/05/15 CHKD:HANDERSON 2012/05/15 APPR:FSMITH 2012/06/01	<b>DESCRIPTION</b> REV: B1	<b>QUALITY SYMBOLS</b> 	<b>GENERAL TOLERANCES (UNLESS SPECIFIED)</b>		<b>DIMENSION STYLE</b> MM/IN		SCALE 4:1	DESIGN UNITS METRIC	THIRD ANGLE PROJECTION	
			mm	INCH	DRAWN BY	DATE	<b>HOUSING KK CONNECTOR</b> <b>(3.96)/0.156 CRIMP</b> <b>GLOW WIRE VERSION</b> 			
			4 PLACES ± --- ± ---	± --- ± ---	BRIAN RUTTLE	10/12/2007				
			3 PLACES ± --- ± .010	± --- ± .010	CHECKED BY	DATE				
2 PLACES ± 0.25 ± .014	± --- ± .014	B. MAGUIRE	12/12/2007							
1 PLACE ± 0.35 ± ---	± --- ± ---	APPROVED BY	DATE	MATERIAL NO. <b>SEE CHART</b>		DOCUMENT NO. <b>SD-3069-GN***</b>	SHEET NO. 1 OF 2			
0 PLACE ± --- ± ---	± --- ± ---	B. MAGUIRE	14/12/2007	DRAFT WHERE APPLICABLE MUST REMAIN WITHIN DIMENSIONS		THIS DRAWING CONTAINS INFORMATION THAT IS PROPRIETARY TO MOLEX INCORPORATED AND SHOULD NOT BE USED WITHOUT WRITTEN PERMISSION				

No. OF CCTS.	ENG. No.	PART No.	LOCKING RAMP
2	3069-G02	09-93-0200	YES
	▲ -G022	▲ -94-0200	NO
3	-G03	-93-0300	YES
	-G032	-94-0300	NO
4	-G04	-93-0400	YES
	-G042	-94-0400	NO
5	-G05	-93-0500	YES
	-G052	-94-0500	NO
6	-G06	-93-0600	YES
	-G062	-94-0600	NO
7	-G07	-93-0700	YES
	-G072	-94-0700	NO
8	-G08	-93-0800	YES
	-G082	-94-0800	NO
9	-G09	-93-0900	YES
	-G092	-94-0900	NO
10	-G10	-93-1000	YES
	-G102	-94-1000	NO
11	-G11	-93-1100	YES
	-G112	-94-1100	NO
12	-G12	-93-1200	YES
	-G122	-94-1200	NO
13	-G13	-93-1300	YES
	-G132	-94-1300	NO
14	-G14	-93-1400	YES
	-G142	-94-1400	NO
15	-G15	-93-1500	YES
	-G152	-94-1500	NO
16	-G16	-93-1600	YES
	-G162	-94-1600	NO
17	-G17	-93-1700	YES
	-G172	-94-1700	NO
18	-G18	-93-1800	YES
	-G182	-94-1800	NO
19	-G19	-93-1900	YES
	-G192	-94-1900	NO
20	▼ -G20	▼ -93-2000	YES
	3069-G202	09-94-2000	NO

ENG. No. DESIGNATION

3069 - G N 2

"G" GLOW WIRE CAPABLE  
SEE NOTE 1

NO. OF CKT'S

"2" INDICATES HOUSING WITHOUT RAMP  
"BLANK" INDICATES HOUSING WITH RAMP

SEE SHEET 1 EEC NO: UCP2012-3738 DRW:MKIPPER 2012/05/15 CHKD:ANDERSON 2012/05/15 APPR:FSM1TH 2012/06/01	QUALITY SYMBOLS	GENERAL TOLERANCES (UNLESS SPECIFIED)	DIMENSION STYLE	SCALE	DESIGN UNITS	THIRD ANGLE PROJECTION
	▽=0	mm INCH	MM/IN	1:1	METRIC	
	▽=0	4 PLACES ± --- ± ---	DRAWN BY DATE	TITLE HOUSING KK CONNECTOR (3.96)/0.156 CRIMP GLOW WIRE VERSION <b>molex</b>		
	▽=0	3 PLACES ± --- ± .010	BRIAN RUTTLE 10/12/2007			
▽=0	2 PLACES ± 0.25 ± .014	CHECKED BY DATE	DOCUMENT NO. SD-3069-GN***			
	1 PLACE ± 0.35 ± ---	B. MAGUIRE 12/12/2007				
	0 PLACE ± --- ± ---	APPROVED BY DATE	SHEET NO. 2 OF 2			
		B. MAGUIRE 14/12/2007				
B1	ANGULAR ± 2 ° DRAFT WHERE APPLICABLE MUST REMAIN WITHIN DIMENSIONS	SEE CHART	THIS DRAWING CONTAINS INFORMATION THAT IS PROPRIETARY TO MOLEX INCORPORATED AND SHOULD NOT BE USED WITHOUT WRITTEN PERMISSION			