



Chipsmall Limited consists of a professional team with an average of over 10 year of expertise in the distribution of electronic components. Based in Hongkong, we have already established firm and mutual-benefit business relationships with customers from,Europe,America and south Asia,supplying obsolete and hard-to-find components to meet their specific needs.

With the principle of “Quality Parts,Customers Priority,Honest Operation,and Considerate Service”,our business mainly focus on the distribution of electronic components. Line cards we deal with include Microchip,ALPS,ROHM,Xilinx,Pulse,ON,Everlight and Freescale. Main products comprise IC,Modules,Potentiometer,IC Socket,Relay,Connector.Our parts cover such applications as commercial,industrial, and automotives areas.

We are looking forward to setting up business relationship with you and hope to provide you with the best service and solution. Let us make a better world for our industry!



Contact us

Tel: +86-755-8981 8866 Fax: +86-755-8427 6832

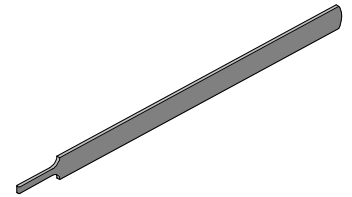
Email & Skype: info@chipsmall.com Web: www.chipsmall.com

Address: A1208, Overseas Decoration Building, #122 Zhenhua RD., Futian, Shenzhen, China





Extractor Tool Instruction Sheet Order No. 11-03-0003 Engineering No. (HT1884)



FEATURES

- This tool is designed to extract different terminal series from various plug and receptacle housings. See Chart below.

SCOPE

Products: KK ® 3.96mm (.156 in) pitch Crimp Terminals

Terminal Series No	Description	Housings Series No	Terminal Order No.			
1797	KK ® 3.96mm (.156 in) pitch Bifurcated Terminals	1796	08-01-0101	08-01-0102	08-01-0105	08-01-0106
			08-01-0121	08-01-0122	08-01-0123	08-01-0124
			08-03-0101	08-03-0102	08-05-0103	08-05-0104
			08-05-0105	08-06-0101	08-06-0102	08-06-0105
			08-06-0106	08-07-0101	08-07-0102	
1799	KK ® 3.96mm (.156 in) pitch Right Angle Terminal	2139, 41696, 52213 and 52266	08-30-0109	08-30-0110	08-34-0105	08-34-0106
			08-34-0109	08-35-0105	08-35-0106	
4366	KK ® 3.96mm (.156 in) pitch Straight-On Dualcon TM Terminals	4338	08-03-0303	08-03-0304	08-05-0301	08-05-0302
			08-05-0305	40-01-1194	50-36-1873	
4573	KK ® 3.96mm (.156 in) pitch Cantilever Straight-On Terminals	4338	08-03-0305	08-03-0306	08-05-0303	08-05-0304
			50-36-2431	50-36-2432		

OPERATION:

- Push the terminal forward in the arrow direction before using the Extractor Tool as shown in Figure 1. Insert the Extractor Tool into the slot on the bottom or top of the connector housing.

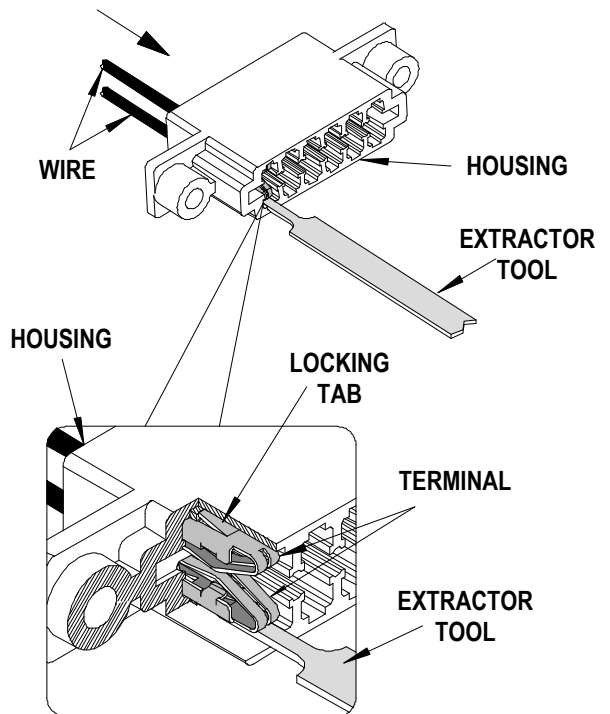


Figure 1

- Depress the terminal locking tabs, push the terminal back through the Connector slot and pull the terminated wire out in the arrow direction as shown in Figure 2.

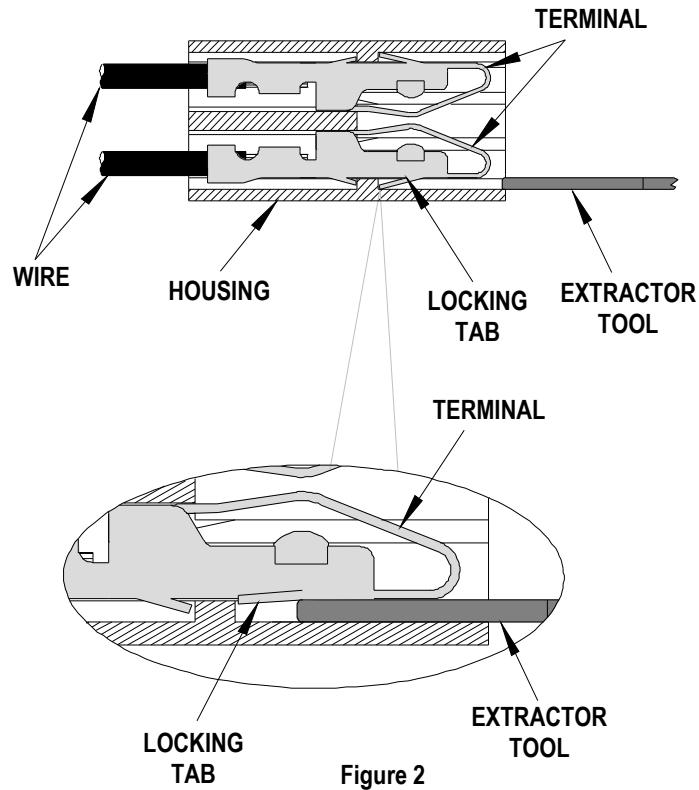


Figure 2

CAUTION: Molex specifications are valid only when used with Molex terminals, applicators and tooling.

Molex does not offer repair parts for Extraction Tools due to the inexpensive nature of the tool.

Contact Information

For more information on Molex application tooling please contact your nearest Molex location shown below.

Americas Headquarters
 Lisle, Illinois 60532 U.S.A.
 1-800-78MOLEX
 amerinfo@molex.com

Far East North Headquarters
 Yamato, Kanagawa, Japan
 81-462-65-2324
 feninfo@molex.com

Far East South Headquarters
 Jurong, Singapore
 65-6-268-6868
 fesinfo@molex.com

European Headquarters
 Munich, Germany
 49-89-413092-0
 eurinfo@molex.com

Corporate Headquarters
 2222 Wellington Ct.
 Lisle, IL 60532 U.S.A.
 630-969-4550
 Fax: 630-969-1352

Visit our Web site at <http://www.molex.com>