



Chipsmall Limited consists of a professional team with an average of over 10 year of expertise in the distribution of electronic components. Based in Hongkong, we have already established firm and mutual-benefit business relationships with customers from,Europe,America and south Asia,supplying obsolete and hard-to-find components to meet their specific needs.

With the principle of “Quality Parts,Customers Priority,Honest Operation,and Considerate Service”,our business mainly focus on the distribution of electronic components. Line cards we deal with include Microchip,ALPS,ROHM,Xilinx,Pulse,ON,Everlight and Freescale. Main products comprise IC,Modules,Potentiometer,IC Socket,Relay,Connector.Our parts cover such applications as commercial,industrial, and automotives areas.

We are looking forward to setting up business relationship with you and hope to provide you with the best service and solution. Let us make a better world for our industry!



## Contact us

Tel: +86-755-8981 8866 Fax: +86-755-8427 6832

Email & Skype: info@chipsmall.com Web: www.chipsmall.com

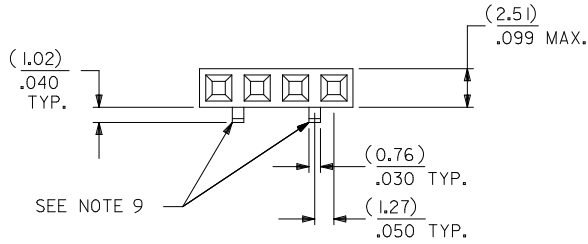
Address: A1208, Overseas Decoration Building, #122 Zhenhua RD., Futian, Shenzhen, China



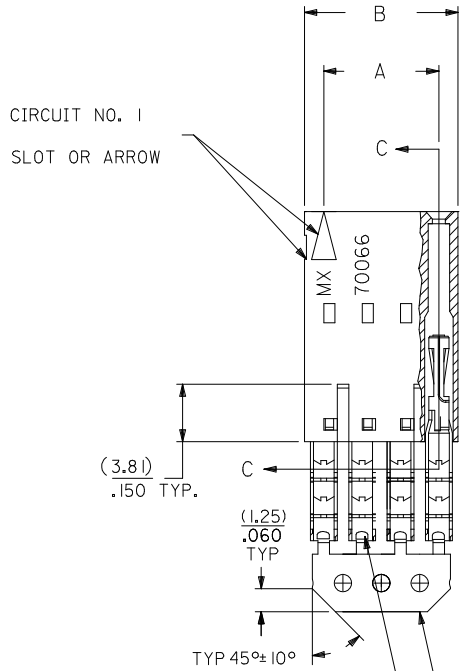
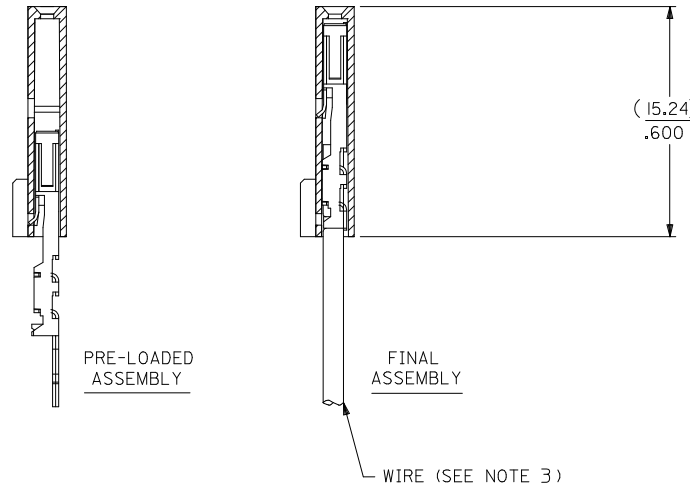
# OPTION D

- NOTES:  
 1. MATERIAL:  
 HOUSING: POLYESTER(PBT), GLASS FILLED, UL94 V-0,  
 COLOR: BLACK  
 TERMINAL: PHOSPHOR BRONZE  
 2. FINISH:  
 TIN: 3.81 MICROMETERS/150 MICROINCHES MINIMUM TIN  
 OVER NICKEL UNDERPLATE OVERALL  
 3. TO BE USED WITH 22 AWG STRANDED WIRE WITH (1.35)/.053  
 DIAMETER MAXIMUM INSULATION  
 4. SEE TABLE FOR AVAILABLE CIRCUIT SIZES  
 5. STANDARD PACKAGING PER PK-70873-0001. OPTIONAL PACKAGING  
 MAY BE AVAILABLE, REQUEST DRAWING PK-70400  
 6. PARTS STACKABLE END TO END ON (2.54)/.100 CENTERS  
 7. PRODUCT SPECIFICATION: PS-70400  
 8. SEE DRAWING SDA-70400-\*\*\*\* (SHEET 3) FOR OPTIONAL  
 HOUSING DETAILS  
 9. 4 CIRCUIT SHOWN, 3-25 CIRCUITS HAVE 2 RIBS  
 10. TO MATE WITH MOLEX PART NUMBERS: 70004-\*\*\*\* & 70013-\*\*\*\*  
 11. 2 CIRCUIT ASSEMBLIES SUPPLIED AS GROUPED PAIRS

CKT. SIZE	A	B	EDP. NO.
2	( 2.54 ) .100	( 5.05 ) .199	14-56-7021
3	( 5.08 ) .200	( 7.59 ) .299	14-56-7031
4	( 7.62 ) .300	( 10.13 ) .399	14-56-7041
5	( 10.16 ) .400	( 12.67 ) .499	14-56-7051
6	( 12.70 ) .500	( 15.21 ) .599	14-56-7061
7	( 15.24 ) .600	( 17.75 ) .699	14-56-7071
8	( 17.78 ) .700	( 20.29 ) .799	14-56-7081
9	( 20.32 ) .800	( 22.83 ) .899	14-56-7091
10	( 22.86 ) .900	( 25.37 ) .999	14-56-7101
11	( 25.54 ) 1.000	( 27.91 ) 1.099	14-56-7111
12	( 27.94 ) 1.100	( 30.45 ) 1.199	14-56-7121
13	( 30.48 ) 1.200	( 32.99 ) 1.299	14-56-7131
14	( 33.02 ) 1.300	( 35.53 ) 1.399	14-56-7141
15	( 35.56 ) 1.400	( 38.07 ) 1.499	14-56-7151
16	( 38.01 ) 1.500	( 40.61 ) 1.599	14-56-7161
17	( 40.64 ) 1.600	( 43.15 ) 1.699	14-56-7171
18	( 43.18 ) 1.700	( 45.69 ) 1.799	14-56-7181
19	( 45.72 ) 1.800	( 48.23 ) 1.899	14-56-7191
20	( 48.26 ) 1.900	( 50.77 ) 1.999	14-56-7201
21	( 50.80 ) 2.000	( 53.31 ) 2.099	14-56-7211
22	( 53.34 ) 2.100	( 55.85 ) 2.199	14-56-7221
23	( 55.88 ) 2.200	( 58.39 ) 2.299	14-56-7231
24	( 58.42 ) 2.300	( 60.93 ) 2.399	14-56-7241
25	( 60.96 ) 2.400	( 63.47 ) 2.499	14-56-7251



## SECTION C-C



I.D. SLOT CODE TO WIRE GAUGE CHART	
I.D. SLOT CODE	WIRE GAUGE
D	22 AWG.

PLATING CODE (STRIPE ON CARRIER STRIP)	
PLATING	COLOR
TIN	NONE

REMOVE ENG NO. EC NO: UCP2011-110 TDRWINMSI BARRA 2010/10/19 CHKD:JORGAN 2010/10/19 APPR:SMILLER 2010/11/24	QUALITY SYMBOLS ∇=0 ∇=0 ∇=0	GENERAL TOLERANCES (UNLESS SPECIFIED)		DIMENSION STYLE MM/IN		SCALE	DESIGN UNITS	THIRD ANGLE PROJECTION			
		4 PLACES ± --- ± --- 3 PLACES ± --- ± .010 2 PLACES ± 0.25 ± .014 1 PLACE ± 0.35 ± --- ANGULAR ±1/2°		DRAWN BY DATE MSIBARRA 2010/10/19 CHECKED BY DATE WAZ 1987/10/26 APPROVED BY DATE SMILLER 2010/11/24		TITLE	ASSEMBLY, SL CONNECTOR SINGLE ROW 2.54/.100 GRID				
		DRAFT WHERE APPLICABLE MUST REMAIN WITHIN DIMENSIONS		SEE TABLE		MATERIAL NO. SDA-70400-3070-3093		MOLEX INCORPORATED			
				SIZE C		DOCUMENT NO.		SHEET NO. 1 OF 1			

THIS DRAWING CONTAINS INFORMATION THAT IS PROPRIETARY TO MOLEX INCORPORATED AND SHOULD NOT BE USED WITHOUT WRITTEN PERMISSION