



Chipsmall Limited consists of a professional team with an average of over 10 year of expertise in the distribution of electronic components. Based in Hongkong, we have already established firm and mutual-benefit business relationships with customers from,Europe,America and south Asia,supplying obsolete and hard-to-find components to meet their specific needs.

With the principle of “Quality Parts,Customers Priority,Honest Operation,and Considerate Service”,our business mainly focus on the distribution of electronic components. Line cards we deal with include Microchip,ALPS,ROHM,Xilinx,Pulse,ON,Everlight and Freescale. Main products comprise IC,Modules,Potentiometer,IC Socket,Relay,Connector.Our parts cover such applications as commercial,industrial, and automotives areas.

We are looking forward to setting up business relationship with you and hope to provide you with the best service and solution. Let us make a better world for our industry!



## Contact us

Tel: +86-755-8981 8866 Fax: +86-755-8427 6832

Email & Skype: info@chipsmall.com Web: www.chipsmall.com

Address: A1208, Overseas Decoration Building, #122 Zhenhua RD., Futian, Shenzhen, China

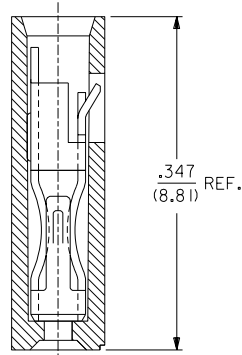
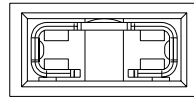
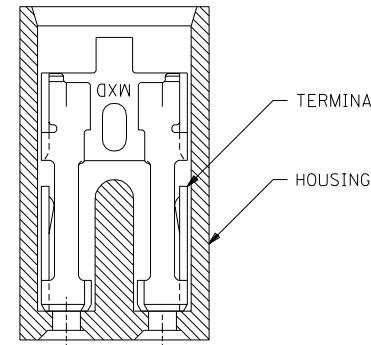
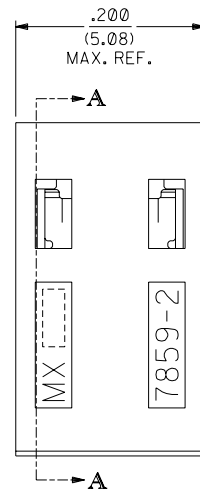
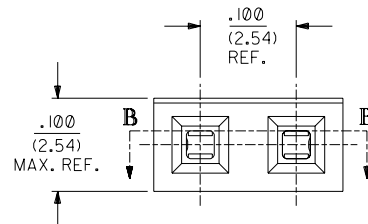


EDP NO.	ENG NO.	FINISH
15-38-1024	A-7859-2164	TIN OVERALL
15-29-1024	A-7859-2554	15 GOLD
15-29-1026	A-7859-2561	30 GOLD

**PART IDENTIFICATION:**

A-7859-2\*\*\*

└ PLATING SPECIFICATION

**SECTION A-A****SECTION B-B****NOTES:**

1. THIS PRODUCT CONFORMS TO MOLEX PRODUCT SPEC. PS-7859.
2. TO BE USED WITH .025/(0.64) SQUARE PINS.
3. MINIMUM MATING PIN LENGTH: .200/(5.08)
4. PRODUCT IS PACKAGED IN BOXES PER PK-70873-0815

**FINISH SPECIFICATION**

- TIN OVERALL - .000150 MINIMUM TIN PLATE OVER  
.000050 MINIMUM NICKEL UNDERPLATE.
- 15 GOLD - .000015 MINIMUM GOLD PLATE IN SELECT AREA OVER  
.000050 MINIMUM NICKEL UNDERPLATE OVERALL.
- 30 GOLD - .000030 MINIMUM GOLD PLATE IN SELECT AREA OVER  
.000050 MINIMUM NICKEL UNDERPLATE OVERALL.

**MATERIAL:**

- HOUSING: GLASS FILLED POLYESTER; 94V-0; COLOR: BLACK.  
TERMINAL: PHOSPHOR BRONZE ALLOY

NOTE FOR LEAD FREE CONVERSION:

THE PRIMARY SHIPPING CARTON WILL BE LABELED "COMPLIANT TO ROHS DIRECTIVE 2002/95/EC AND ELV ANNEX II OF DIRECTIVE 2000/53/EC". CARTONS WITHOUT THIS LABEL MAY CONTAIN PRODUCT WITH LEAD.

REV.	DESCRIPTION
D	LEAD FREE CONV ECN UCP2004-2133 RKADAMS 04/04/27
C1	ADDED PKG. SPEC. PER ECN U10786 WHETSTON 97/2/7
C	CHANGED MATERIAL PER ECR # U51214 95/06/02 CAC
B	REVISED ENG. NOS. PER ECR # U31581 10/26/93 REED
A	RELEASED PER ECR # U30372 03/11/93 REED
3	REVISE GOLD PLT. PER ECR # U12055 10/18/91 AAB
2	REVISE TERM. PLT. PER ECR # U11096 06/18/91 AAB
1	*X* RELEASE PER ECR # U10445 02/07/91 AAB

DIMENSIONS SHOWN (METRIC) INCH		UNLESS OTHERWISE SPECIFIED TOLERANCES: ANGULAR ± 1/2°	
3 PLACE	± .005	---	---
2 PLACE	± .01	± 0.13	
1 PLACE	---	± 0.25	
DRAWING WHERE APPLICABLE MUST REMAIN WITHIN DIMENSIONS			
DRWG. BY: AAB	CHK'D. BY:	SCALE: 10: 1	
APP'D. BY: MJM	FILE NAME: 57859X1	THIS DRAWING CONTAINS INFORMATION THAT IS PROPRIETARY TO MOLEX INC. AND SHOULD NOT BE USED WITHOUT WRITTEN PERMISSION.	DATE: 02/07/91

MFG.	SH.	REV.	LTR.	REVISIONS
▽ = 0	▽ = 0			REVISE ONLY ON CAD SYSTEM
TITLE: SALES ASSY - SHUNT 2-CIRCUIT TERMINAL W/OPEN END				
MOLEX INCORPORATED		SHEET NO. 1 OF 1		
LITLLE, ILL. 60532 U.S.A.		DATE: 02/07/91		
PART NO. SDA-7859-2***		DRWG. NO. SDA-7859-2***		
SEE CHART		SIZE: DA		