



Chipsmall Limited consists of a professional team with an average of over 10 year of expertise in the distribution of electronic components. Based in Hongkong, we have already established firm and mutual-benefit business relationships with customers from,Europe,America and south Asia,supplying obsolete and hard-to-find components to meet their specific needs.

With the principle of “Quality Parts,Customers Priority,Honest Operation,and Considerate Service”,our business mainly focus on the distribution of electronic components. Line cards we deal with include Microchip,ALPS,ROHM,Xilinx,Pulse,ON,Everlight and Freescale. Main products comprise IC,Modules,Potentiometer,IC Socket,Relay,Connector.Our parts cover such applications as commercial,industrial, and automotives areas.

We are looking forward to setting up business relationship with you and hope to provide you with the best service and solution. Let us make a better world for our industry!



Contact us

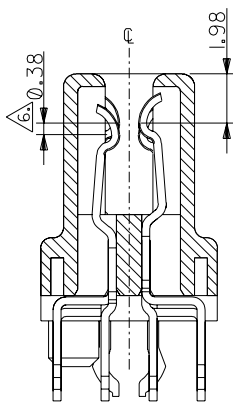
Tel: +86-755-8981 8866 Fax: +86-755-8427 6832

Email & Skype: info@chipsmall.com Web: www.chipsmall.com

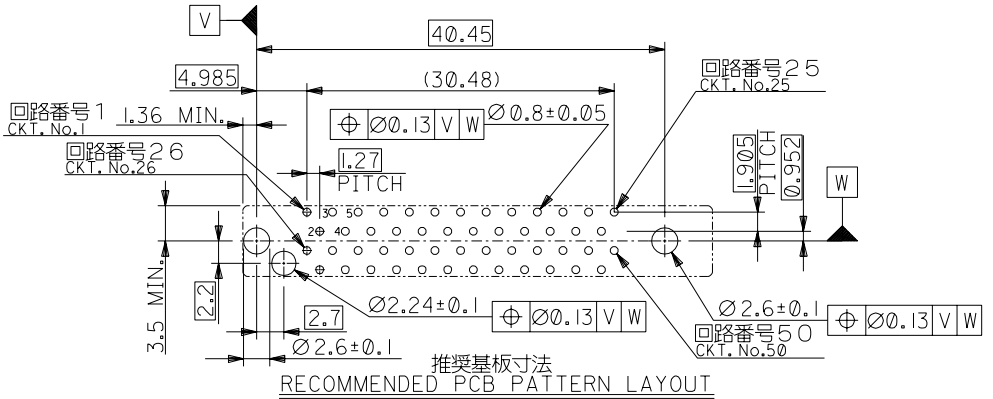
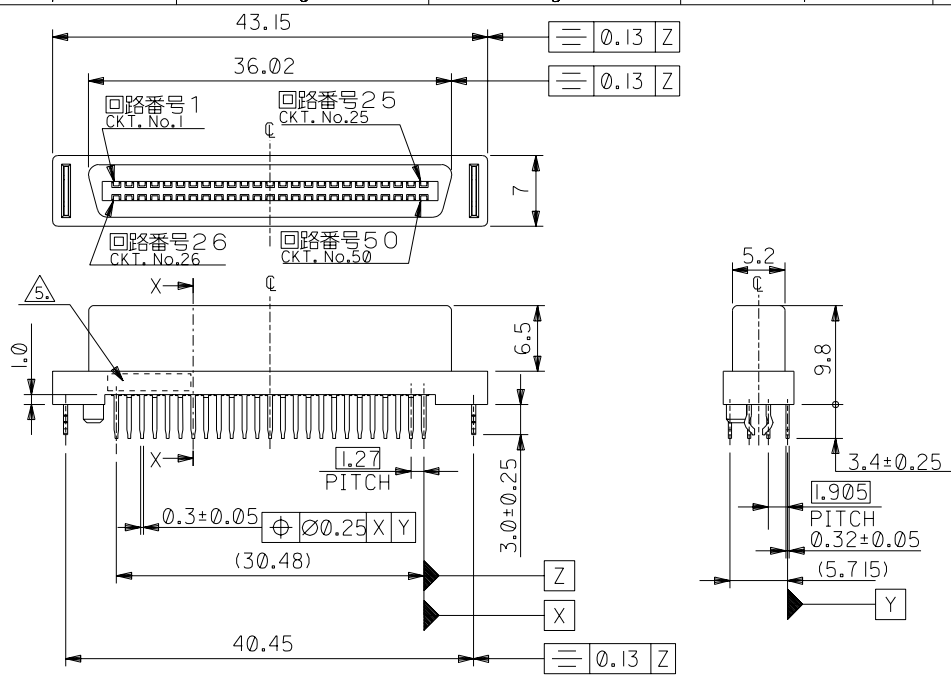
Address: A1208, Overseas Decoration Building, #122 Zhenhua RD., Futian, Shenzhen, China



DWG. NO. SD-71660-001



SECTION X-X (SCALE:5-1)



RECOMMENDED PCB PATTERN LAYOUT

注) NOTES.
 1. 材質 MATERIAL
 ハウジング : 液晶ポリマー (LCP) ガラス充填
 HOUSING : UL 94V-0 色:黒
 LIQUID CRYSTAL POLYMER (LCP)
 GLASS FILLED UL94V-0, BLACK.
 ターミナル : リン青銅
 TERMINAL : PHOSPHOR BROZE
 金属ペグ : リン青銅
 METAL PEG : PHOSPHOR BROZE
 2.メッキ仕様 PLATING
 ターミナル : 金メッキ 最小 0.76 マイクロメートル
 TERMINAL : GOLD PLATING 0.76 MICRON METER MINIMUM.
 接点部 : 金メッキ 最小 0.76 マイクロメートル
 CONTACT AREA : GOLD PLATING 0.76 MICRON METER MINIMUM.
 半田付け部 : 錫メッキ 最小 1.27 マイクロメートル
 SOLDER TAIL AREA : TIN 1.27 MICRON METER MINIMUM.
 下地メッキ : ニッケルメッキ 最小 1.91 マイクロメートル
 UNDER PLATING : NICKEL 1.91 MICRON METER MINIMUM.
 金属ペグ : 錫メッキ 最小 1.27 マイクロメートル
 METAL PEG : TIN 1.27 MICRON METER MINIMUM.

71661-****	PS-71660-002
嵌合相手 MATED CONN.	納入仕様書 PRODUCT SPECIFICATION

4. 推奨基板厚 RECOMMENDED P.C.BOARD THICKNESS
 $t = 1.6 \pm 0.13$
 5. 製造週番を示す。例 (週, 年) = > (26, 96)
 FOUR DIGIT DATE CODE (WK, YR), EXAMPLE => 26 96
 LOCATED IN AREA INDICATED.
 6. 適用極 2~4, 8~11, 14, 17, 20, 23, 26~29,
 31, 32, 34, 36, 39, 42, 45, 48, 49 (合計24極)
 APPLIES CKTS NO.2 THRU 4, 8 THRU 11, 14, 17, 20, 23, 26 THRU 29,
 31, 32, 34, 36, 39, 42, 45, 48, 49 (TOTAL 24 CKTS.)

71660-1550	50	71660-15**
MATERIAL NO.	("N") 極数	MODEL NO.

DO NOT SCALE DRAWING

EC NO.	REVISED
DRWN: <i>E. Oyada</i>	EC NO. J2004-4542
CHK: <i>H. Saito</i>	DRWN: Y.WADA '04/06/01
APPR: <i>H. Saito</i>	CHK: M.SASAO '04/06/01
	APPR: M.SASAO '04/06/01
EC NO.	新規作成 RELEASED
DRWN: <i>E. Oyada</i>	EC NO. JD81756
CHK: <i>H. Saito</i>	DRWN: <i>E. Oyada</i> '98/06/25
APPR: <i>H. Saito</i>	CHK: <i>H. Saito</i> '98/06/25
	APPR: <i>H. Saito</i> '98/06/25

MATERIAL	SEE NOTES.
材料	SEE NOTES.
FINISH	SEE NOTES.
仕上り	SEE NOTES.
WIRE RANGE	#
適用線径範囲	#
INS. RANGE	#
被覆外径	#

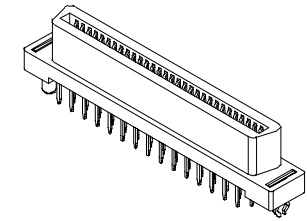
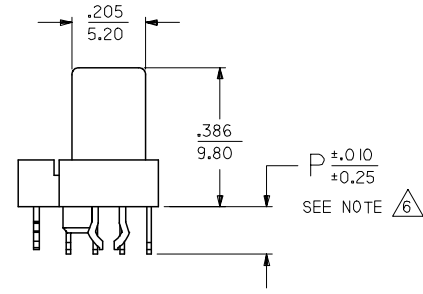
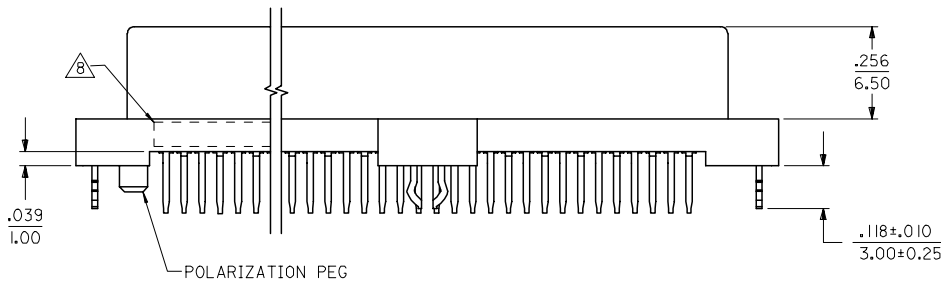
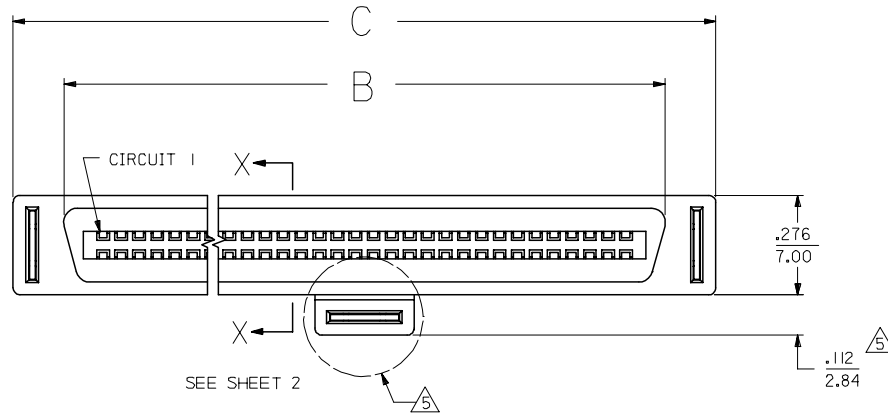
GENERAL TOLERANCES: (UNLESS SPECIFIED) 一般公差	SCALE 2-1	DESIGN UNITS	THIRD ANGLE PROJECTION	DIMENSIONS:	SHT	REV
10 UNDER 未滿	±0.2	mm	<input checked="" type="checkbox"/> mm <input type="checkbox"/> INCH	<input type="checkbox"/> mm <input type="checkbox"/> INCH		
10 OVER 以上	±0.25	mm	<input type="checkbox"/> mm <input checked="" type="checkbox"/> INCH	<input type="checkbox"/> mm <input type="checkbox"/> INCH		
30 OVER 以上	±0.3	mm	<input type="checkbox"/> mm <input type="checkbox"/> INCH	<input type="checkbox"/> mm <input type="checkbox"/> INCH		
ANGLE 角度	±3°					

DRAWN BY & DATE	TITLE: EBBI 50D VERTICAL RECEPTACLE CONNECTOR -LEAD FREE-
<i>E. Oyada</i> '98/06/25	
CHECKED BY & DATE	MOLEX INCORPORATED
<i>H. Saito</i> '98/06/25	
APPROVED BY & DATE	MATERIAL NO.
<i>H. Saito</i> '98/06/25	DRAWING NO.
CAD FILENAME	SHEET NO.
71660001.S01	1 OF 1

THIS DRAWING CONTAINS INFORMATION THAT IS PROPRIETARY TO MOLEX INCORPORATED AND SHOULD NOT BE USED WITHOUT WRITTEN PERMISSION.		SIZE B
--	--	--------

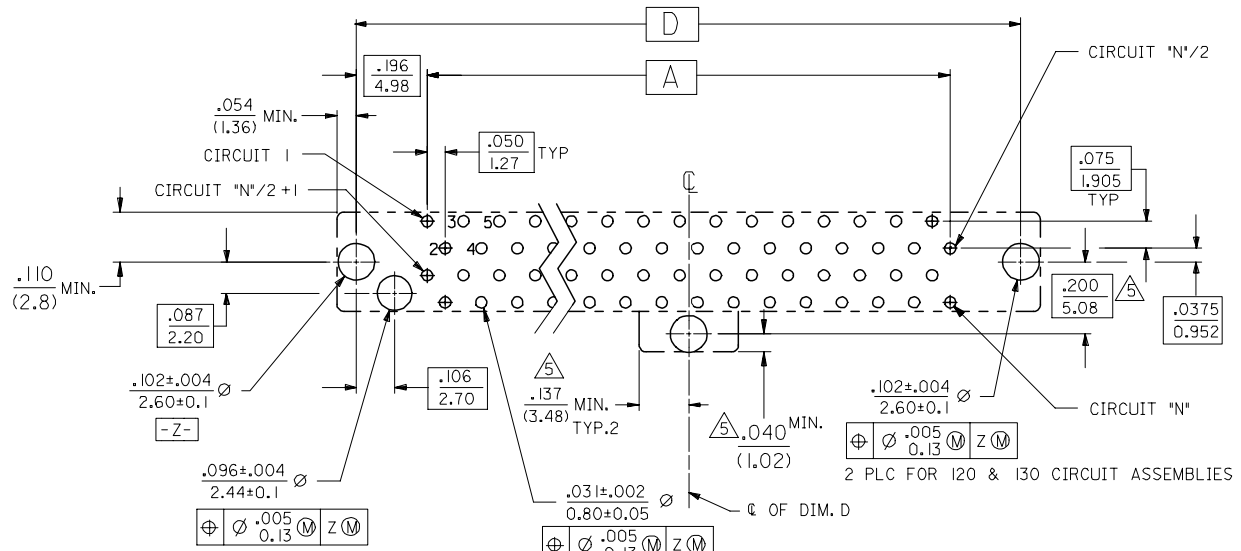
NOTES:

- 1) MATERIALS:
HOUSING- LCP, GLASS FILLED, 94V-0, BLACK.
TERMINALS- COPPER ALLOY
METAL PEGS- COPPER ALLOY
- 2) FINISH:
TERMINALS:
.000030/(0.00076) MINIMUM GOLD IN CONTACT AREA OVER
.000050/(0.00127) MINIMUM TIN IN TAIL AREA OVER
.000075/(0.00191) MINIMUM NICKEL UNDERPLATE OVERALL.
- 3) ASSEMBLY MATES WITH MOLEX P/N SDA-71661-****.
- 4) CONFORMS TO PRODUCT SPECIFICATION PS-71660.
- 5) CENTER PEG IS ONLY ON I20 AND I30 CIRCUIT ASSEMBLIES.
- 6) TAIL LENGTH ON FIRST MATE CONTACTS IS APPROXIMATELY .010 INCH/0.25 MM SHORTER THAN THE TAIL LENGTH SPECIFIED.
- 7) CONNECTOR WILL ACCEPT MATING TO A P.C. BOARD WITH A THICKNESS OF .062±.003.
- 8) FOUR DIGIT DATE CODE (WK YR), EXAMPLE => 26 96 LOCATED IN AREA INDICATED.
- 9) SEE CHART FOR PACKAGING INFORMATION.

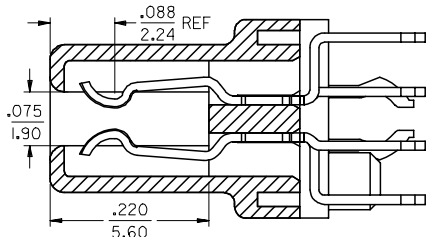


3	0
2	0
1	0
SHT	REV

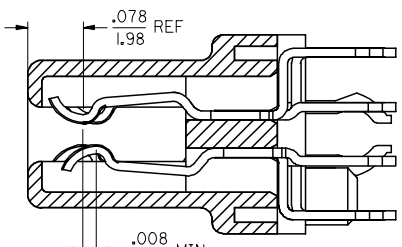
UPDATE BORDER FC NO: UCP2007-0935 DRAWN BY: BARKER 2006/11/06 CHKD: MIBARRA 2006/11/06 APPR: SMILLER 2006/11/07	QUALITY SYMBOLS ▽=0 ▽=0	GENERAL TOLERANCES (UNLESS SPECIFIED)		DIMENSION STYLE IN/MM		SCALE 4:1	DESIGN UNITS INCH	THIRD ANGLE PROJECTION																	
		<table border="1"> <tr> <th></th> <th>mm</th> <th>INCH</th> </tr> <tr> <td>4 PLACES</td> <td>±.005</td> <td>±.0005</td> </tr> <tr> <td>3 PLACES</td> <td>±.010</td> <td>±.0010</td> </tr> <tr> <td>2 PLACES</td> <td>±.015</td> <td>±.0015</td> </tr> <tr> <td>1 PLACE</td> <td>±.025</td> <td>±.0025</td> </tr> </table>			mm	INCH	4 PLACES	±.005	±.0005	3 PLACES	±.010	±.0010	2 PLACES	±.015	±.0015	1 PLACE	±.025	±.0025	DRAWN BY RAN		DATE 6/15/92	TITLE SALES ASSEMBLY MOLEX EBBI 50D VERTICAL RECEPTACLE CONNECTOR			
			mm	INCH																					
		4 PLACES	±.005	±.0005																					
3 PLACES	±.010	±.0010																							
2 PLACES	±.015	±.0015																							
1 PLACE	±.025	±.0025																							
ANGULAR ±1/2°		CHECKED BY RAN		DATE 6/15/92	APPROVED BY CAB																				
DRAFT WHERE APPLICABLE MUST REMAIN WITHIN DIMENSIONS		MATERIAL NO.		DATE 6/15/92		DOCUMENT NO.		SHEET NO. 1 OF 3																	



(FOR 40, 60, 68, 80, 100, 120 CIRCUITS ONLY)



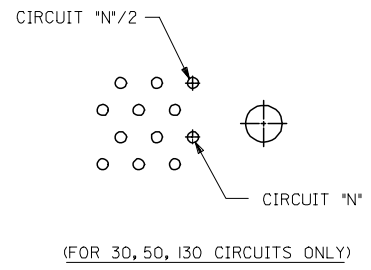
STANDARD PRODUCT



FMLB OPTION

SECTION X-X
SCALE - 8:1

RECOMMENDED PC BOARD LAYOUT
COMPONENT SIDE



UPDATE BORDER FC NO: UCP2007-0935 DRW:NBARKER 2006/11/06 CHKD:MBARRA 2006/11/06 APPR:SMILLER 2006/11/07	QUALITY SYMBOLS ▽=0 ▽=0	GENERAL TOLERANCES (UNLESS SPECIFIED)		DIMENSION STYLE IN/MM		SCALE 4:1	DESIGN UNITS INCH	THIRD ANGLE PROJECTION	
		4 PLACES ± --- ± ---	3 PLACES ± --- ± .005	DRAWN BY RAN	DATE 6/15/92	TITLE SALES ASSEMBLY MOLEX EBBI 50D VERTICAL RECEPTACLE			
		2 PLACES ± 0.13 ± .010	1 PLACE ± 0.25 ± ---	CHECKED BY RAN	DATE 6/15/92	MOLEX INCORPORATED			
		ANGULAR ±1/2°		APPROVED BY CAB	DATE 6/15/92	MATERIAL NO. SEE CHART		DOCUMENT NO. SDA-71660-1***	SHEET NO. 2 OF 3
DRAFT WHERE APPLICABLE MUST REMAIN WITHIN DIMENSIONS				SIZE C		THIS DRAWING CONTAINS INFORMATION THAT IS PROPRIETARY TO MOLEX INCORPORATED AND SHOULD NOT BE USED WITHOUT WRITTEN PERMISSION			

J

I

H

G

F

E

D

C

B

A

ENGINEERING NUMBER	EDP NUMBER	PACKAGING SPEC	CKT (*N*)	A	B	C	D	P	ADVANCED TERMINALS / CKTS SEE SECTION X-X *FMLB OPT*
SDA-71660-1030	015-92-1030	PK-71660	30	.700 (17.78)	.918 (23.32)	1.199 (30.45)	1.092 (27.75)	.134 (3.40)	N/A
SDA-71660-1040	015-92-1040	PK-71660	40	.950 (24.13)	1.168 (29.67)	1.449 (36.80)	1.342 (34.10)		
SDA-71660-1050	015-92-1050	PK-71660	50	1.200 (30.48)	1.418 (36.02)	1.699 (43.15)	1.592 (40.45)		
SDA-71660-1060	015-92-1060	PK-71660	60	1.450 (36.83)	1.668 (42.37)	1.949 (49.50)	1.842 (46.80)		
SDA-71660-1068	015-92-1068	PK-71660	68	1.650 (41.91)	1.868 (47.45)	2.149 (54.58)	2.042 (51.88)		
SDA-71660-1080	015-92-1080	PK-71660	80	1.950 (49.53)	2.168 (55.07)	2.449 (62.20)	2.342 (59.50)		
SDA-71660-1100	015-92-1100	PK-71660	100	2.450 (62.23)	2.668 (67.77)	2.949 (74.90)	2.842 (72.20)		
SDA-71660-1120	015-92-1120	PK-71660	120	2.950 (74.93)	3.168 (80.47)	3.449 (87.60)	3.342 (84.90)		
SDA-71660-1130	015-92-1130	PK-71660	130	3.200 (81.28)	3.418 (86.82)	3.699 (93.95)	3.592 (91.25)	.110 (2.79)	N/A
SDA-71660-1330	015-92-1430	PK-71660	30	.700 (17.78)	.918 (23.32)	1.199 (30.45)	1.092 (27.75)		
SDA-71660-1340	015-92-1440	PK-71660	40	.950 (24.13)	1.168 (29.67)	1.449 (36.80)	1.342 (34.10)		
SDA-71660-1350	015-92-1450	PK-71660	50	1.200 (30.48)	1.418 (36.02)	1.699 (43.15)	1.592 (40.45)		
SDA-71660-1360	015-92-1460	PK-71660	60	1.450 (36.83)	1.668 (42.37)	1.949 (49.50)	1.842 (46.80)		
SDA-71660-1368	015-92-1468	PK-71660	68	1.650 (41.91)	1.868 (47.45)	2.149 (54.58)	2.042 (51.88)		
SDA-71660-1380	015-92-1480	PK-71660	80	1.950 (49.53)	2.168 (55.07)	2.449 (62.20)	2.342 (59.50)		
SDA-71660-1400	015-92-1500	PK-71660	100	2.450 (62.23)	2.668 (67.77)	2.949 (74.90)	2.842 (72.20)		
SDA-71660-1401	015-92-1501	PK-70873-0816	100	2.450 (62.23)	2.668 (67.77)	2.949 (74.90)	2.842 (72.20)	.134 (3.40)	2-4, 8-11, 14, 17, 20, 23, 26-29, 31, 32, 34, 36, 39, 42, 45, 48, 49
SDA-71660-1420	015-92-1520	PK-71660	120	2.950 (74.93)	3.168 (80.47)	3.449 (87.60)	3.342 (84.90)		
SDA-71660-1430	015-92-1530	PK-71660	130	3.200 (81.28)	3.418 (86.82)	3.699 (93.95)	3.592 (91.25)		
SDA-71660-1550	015-92-1550	PK-71660	50	1.200 (30.48)	1.418 (36.02)	1.699 (43.15)	1.592 (40.45)	.155 (3.94)	N/A
SDA-71660-1630	716601630	PK-71660	30	.700 (17.78)	.918 (23.32)	1.199 (30.45)	1.092 (27.75)		
SDA-71660-1640	716601640	PK-71660	40	.950 (24.13)	1.168 (29.67)	1.449 (36.80)	1.342 (34.10)		
SDA-71660-1650	716601650	PK-71660	50	1.200 (30.48)	1.418 (36.02)	1.699 (43.15)	1.592 (40.45)		
SDA-71660-1660	716601660	PK-71660	60	1.450 (36.83)	1.668 (42.37)	1.949 (49.50)	1.842 (46.80)		
SDA-71660-1668	716601668	PK-71660	68	1.650 (41.91)	1.868 (47.45)	2.149 (54.58)	2.042 (51.88)		
SDA-71660-1680	716601680	PK-71660	80	1.950 (49.53)	2.168 (55.07)	2.449 (62.20)	2.342 (59.50)		
SDA-71660-1700	716601700	PK-71660	100	2.450 (62.23)	2.668 (67.77)	2.949 (74.90)	2.842 (72.20)		
SDA-71660-1720	716601720	PK-71660	120	2.950 (74.93)	3.168 (80.47)	3.449 (87.60)	3.342 (84.90)		
SDA-71660-1730	716601730	PK-71660	130	3.200 (81.28)	3.418 (86.82)	3.699 (93.95)	3.592 (91.25)		

UPDATE BORDER EC NO: UCP2007-0935 DRW: NBBARKER 2006/11/06 CHKD: 2006/11/06 APPR: SMILLER 2006/11/07 REVD:	QUALITY SYMBOLS	GENERAL TOLERANCES (UNLESS SPECIFIED)	DIMENSION STYLE	SCALE	DESIGN UNITS	THIRD ANGLE PROJECTION
	▽=0 ▽=0	mm INCH 4 PLACES ± --- ± --- 3 PLACES ± --- ± .005 2 PLACES ± 0.13 ± .010 1 PLACE ± 0.25 ± --- ANGULAR ±1/2°	IN/MM	4:1	INCH	DRAWN BY DATE RAN 6/15/92 CHECKED BY DATE RAN 6/15/92 APPROVED BY DATE CAB 6/15/92
	TITLE	SALES ASSEMBLY MOLEX EBBI 50D VERTICAL RECEPTACLE		MATERIAL NO.		DOCUMENT NO.
	DRAFT WHERE APPLICABLE MUST REMAIN WITHIN DIMENSIONS		SEE CHART		SDA-71660-1****	
THIS DRAWING CONTAINS INFORMATION THAT IS PROPRIETARY TO MOLEX INCORPORATED AND SHOULD NOT BE USED WITHOUT WRITTEN PERMISSION						