



Chipsmall Limited consists of a professional team with an average of over 10 year of expertise in the distribution of electronic components. Based in Hongkong, we have already established firm and mutual-benefit business relationships with customers from,Europe,America and south Asia,supplying obsolete and hard-to-find components to meet their specific needs.

With the principle of “Quality Parts,Customers Priority,Honest Operation,and Considerate Service”,our business mainly focus on the distribution of electronic components. Line cards we deal with include Microchip,ALPS,ROHM,Xilinx,Pulse,ON,Everlight and Freescale. Main products comprise IC,Modules,Potentiometer,IC Socket,Relay,Connector.Our parts cover such applications as commercial,industrial, and automotives areas.

We are looking forward to setting up business relationship with you and hope to provide you with the best service and solution. Let us make a better world for our industry!



Contact us

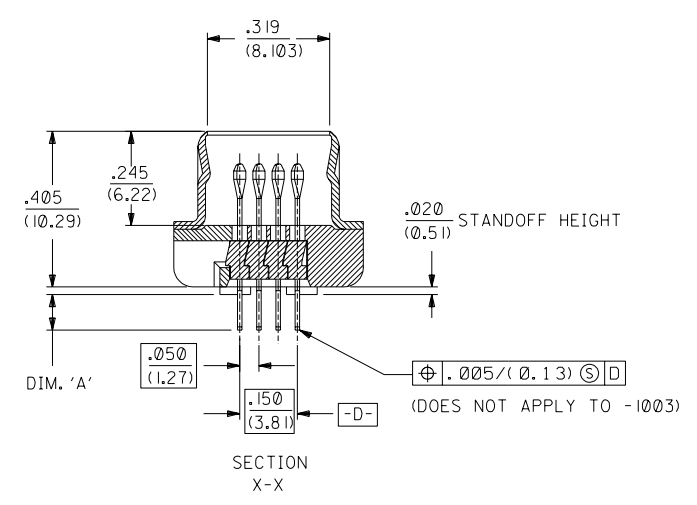
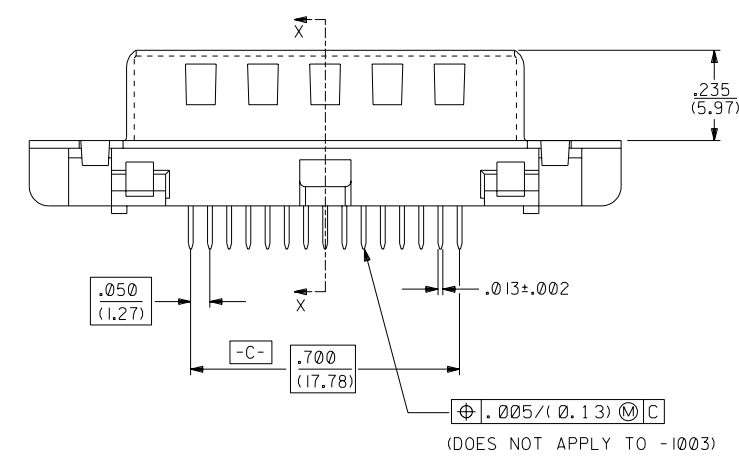
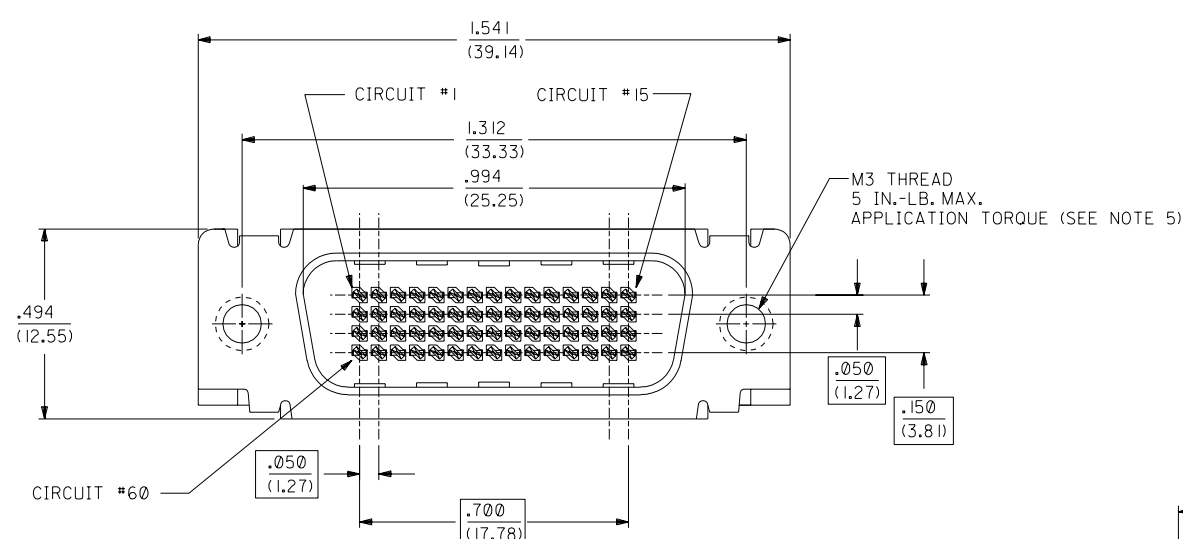
Tel: +86-755-8981 8866 Fax: +86-755-8427 6832

Email & Skype: info@chipsmall.com Web: www.chipsmall.com

Address: A1208, Overseas Decoration Building, #122 Zhenhua RD., Futian, Shenzhen, China



70929	4	3	2	1
ENGINEERING NUMBER	ORDERING NUMBER	DIM. 'A'	PACKAGING SPEC.	
A-70929-1001	15-92-2251	.092±.012 (2.34±0.30)	PK-70873-0226	
A-70929-1003	70929-1003	.570±.012 (14.48±0.30)	PK-70873-640	



NOTES:

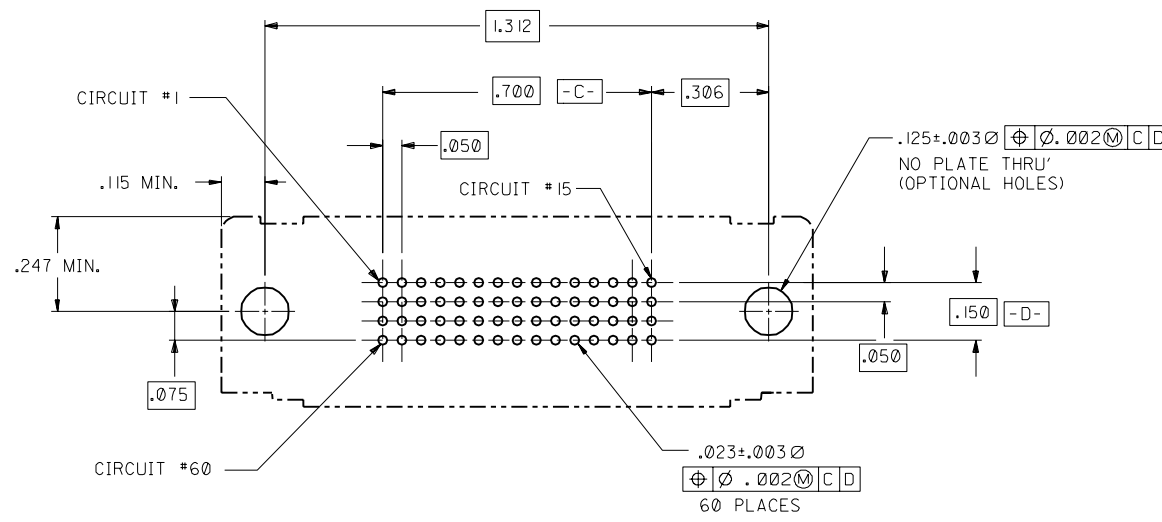
1) MATERIALS:
 HOUSING: GLASS FILLED LCP (LIQUID CRYSTAL POLYMER),
 UL 94V-0, COLOR: BLACK.
 MOLDED STICK: GLASS FILLED LCP (LIQUID CRYSTAL POLYMER),
 UL 94V-0, COLOR: BLACK.
 MALE TERMINAL: PHOSPHOR BRONZE
 OUTER SHELL: DEEP DRAWN STEEL.

2) PLATING :
 TERMINAL: .000030/(0.000762) MINIMUM GOLD IN SELECTIVE AREA;
 .000100/(0.00254) MINIMUM TIN IN SELECTIVE AREA;
 OVER NICKEL UNDERPLATE OVERALL.
 OUTER SHELL: .000100/(0.00254) MINIMUM BRIGHT NICKEL
 OVER COPPER FLASH (OPTIONAL).

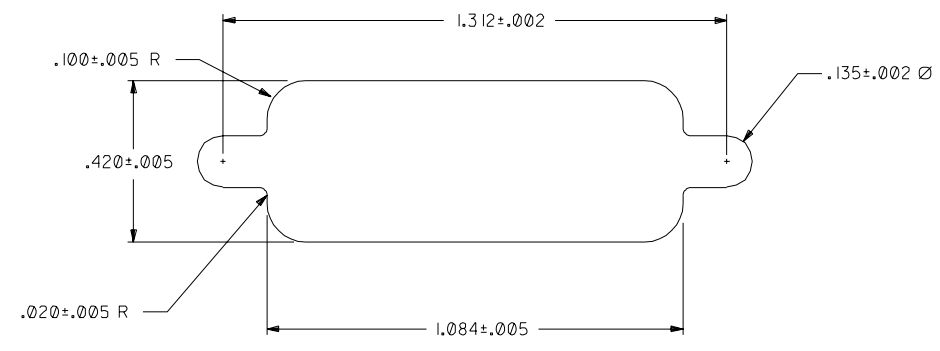
NOTE FOR LEAD FREE CONVERSION:
 THE PRIMARY SHIPPING CARTON WILL BE
 LABELED "COMPLIANT TO ROHS DIRECTIVE
 2002/95/EC AND ELV ANNEX II OF
 DIRECTIVE 2000/53/EC". CARTONS
 WITHOUT THIS LABEL MAY CONTAIN
 PRODUCT WITH LEAD.

3) CONFORMS TO PRODUCT SPECIFICATION PS-70928.
 4) PARTS TO BE PACKAGED PER CHART.
 5) THREAD GAUGE MAY REQUIRE UP TO 1 IN.-LB. OF TORQUE
 DURING GAUGING PROCESS.

DIMENSIONS SHOWN (METRIC) INCH UNLESS OTHERWISE SPECIFIED TOLERANCES: ANGULAR ± 1/2°		▽ = 0 ▼ = 0 REVISE ONLY ON CAD SYSTEM	
3 PLACE ±	INCH	---	METRIC
2 PLACE ±	---	±	---
1 PLACE	---	±	---
DRAFT WHERE APPLICABLE MUST REMAIN WITHIN DIMENSIONS			
DRWG. BY: MOS	CHK'D. BY: CAB	TITLE: .050" PITCH LFH 60 CKT VERTICAL D-SUB SALES ASSY MALE	
APP'D. BY: CAB	SCALE: 4: 1	PART NO. SEE CHART SHEET NO. DATE SDA-70929-1001 1 OF 2 01/21/92	
LTR. REVISIONS		MFG. SH. REV. 2 D I 1 H	
LTR. REVISIONS		THIS DRAWING CONTAINS INFORMATION THAT IS PROPRIETARY TO MOLEX INC. AND SHOULD NOT BE USED WITHOUT WRITTEN PERMISSION.	



RECOMMENDED P.C.B. LAYOUT
COMPONENT SIDE



RECOMMENDED PANEL CUT-OUT

70929

MFG. SH. REV.

LTR.	REVISIONS	LTR.	REVISIONS
		D	SEE SHEET 1
		C1	SEE SHEET 1

DIMENSIONS SHOWN (METRIC) INCH	
UNLESS OTHERWISE SPECIFIED TOLERANCES: ANGULAR ± 1/2°	
3 PLACE ±	---
2 PLACE ±	±
1 PLACE ---	±
DRAFT WHERE APPLICABLE MUST REMAIN WITHIN DIMENSIONS	
DRWG. BY: MOS	CHK'D. BY: CAB
APP'D. BY: CAB	SCALE: 4: 1

TITLE: .050" PITCH LFH 60 CKT VERTICAL D-SUB SALES ASSY MALE
 MOLEX INCORPORATED
 PART NO. 15-92-2251
 SHEET NO. 2
 DATE 01/21/92
 DRWG. NO. SDA-70929-1001
 U.S.A.

THIS DRAWING CONTAINS INFORMATION THAT IS PROPRIETARY TO MOLEX INC. AND SHOULD NOT BE USED WITHOUT WRITTEN PERMISSION.