



Chipsmall Limited consists of a professional team with an average of over 10 year of expertise in the distribution of electronic components. Based in Hongkong, we have already established firm and mutual-benefit business relationships with customers from,Europe,America and south Asia,supplying obsolete and hard-to-find components to meet their specific needs.

With the principle of "Quality Parts,Customers Priority,Honest Operation,and Considerate Service",our business mainly focus on the distribution of electronic components. Line cards we deal with include Microchip,ALPS,ROHM,Xilinx,Pulse,ON,Everlight and Freescale. Main products comprise IC,Modules,Potentiometer,IC Socket,Relay,Connector.Our parts cover such applications as commercial,industrial, and automotives areas.

We are looking forward to setting up business relationship with you and hope to provide you with the best service and solution. Let us make a better world for our industry!



Contact us

Tel: +86-755-8981 8866 Fax: +86-755-8427 6832

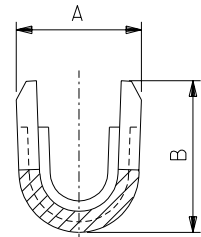
Email & Skype: info@chipsmall.com Web: www.chipsmall.com

Address: A1208, Overseas Decoration Building, #122 Zhenhua RD., Futian, Shenzhen, China

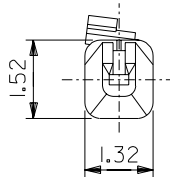
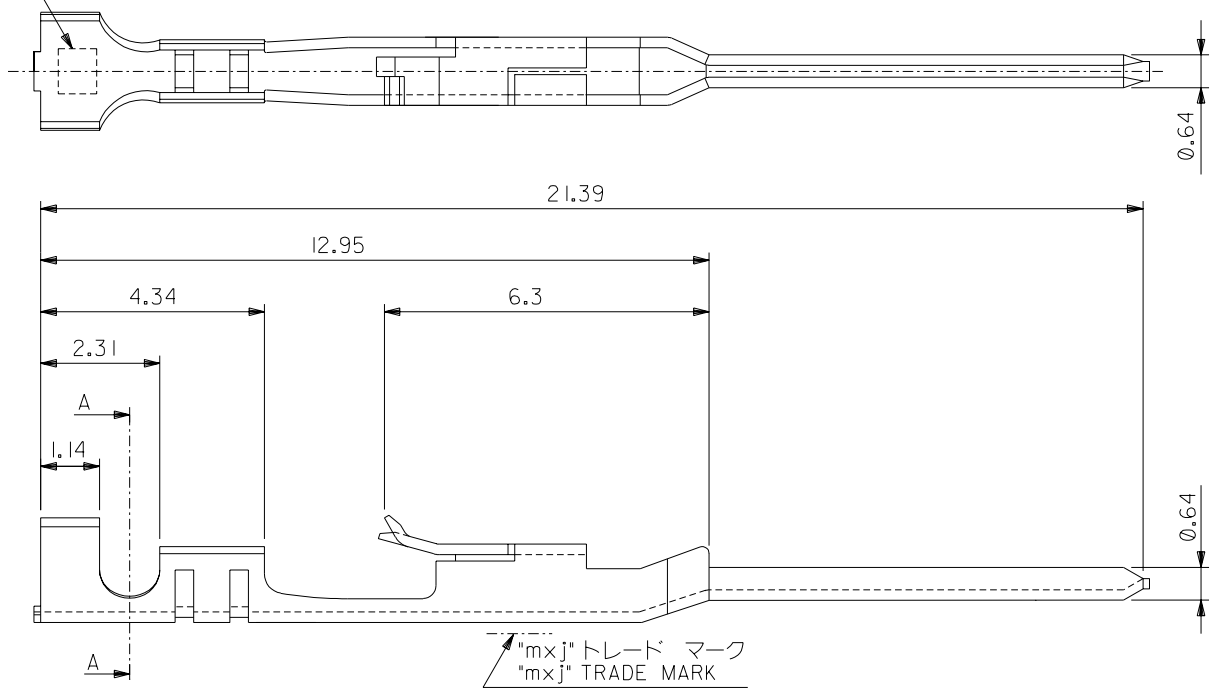
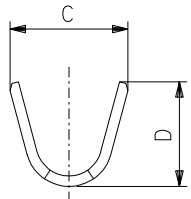


ENG. NO. 0*04 SD-70021-0*21
EDP NO. #

適用電線表示
CRIMP SIZE CODE LETTER



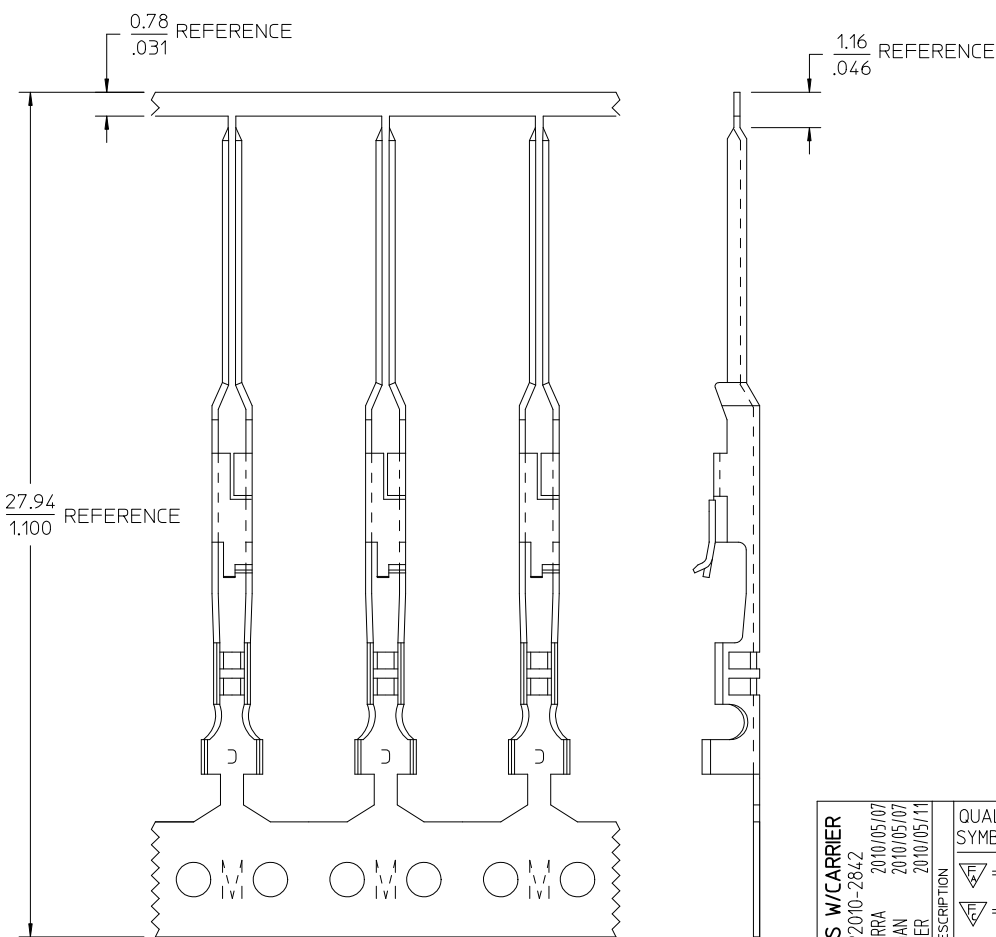
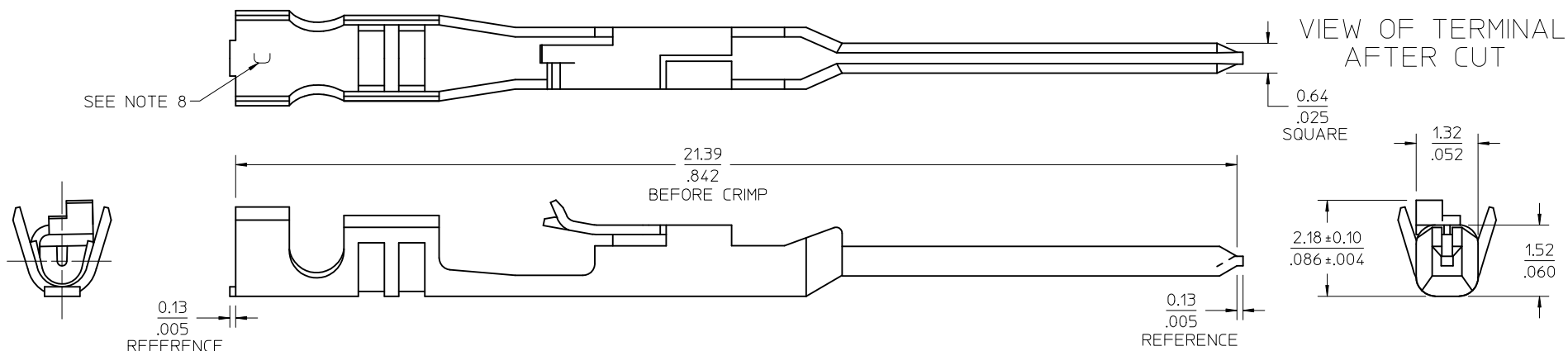
断面 A-A
SECTION A-A
(SCALE:20-1)



注記:
NOTES:

- 1. 適合ハウジング: 70066-****, 70107-****
APPLICABLE HOUSING: 70066-****, 70107-****
- 2. 仕上げ ニッケル下地、錫メッキ
FINISH TIN OVER NICKEL PLATING

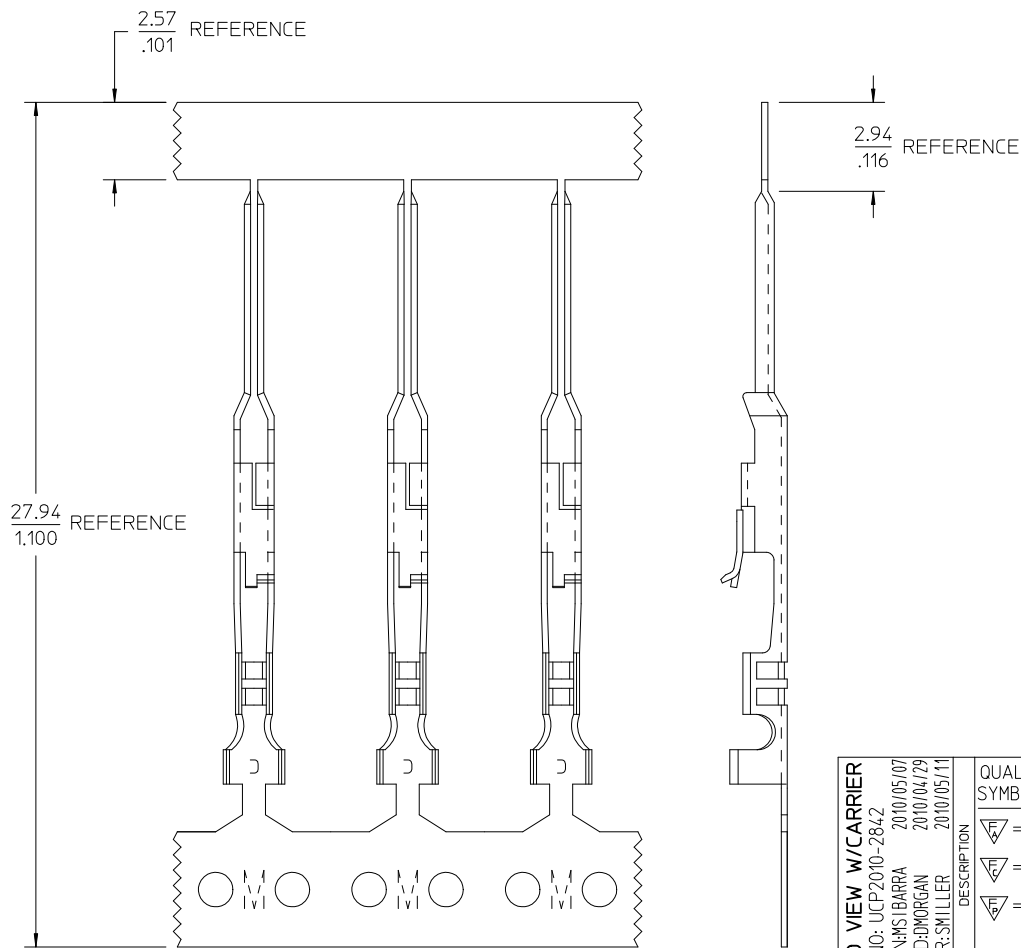
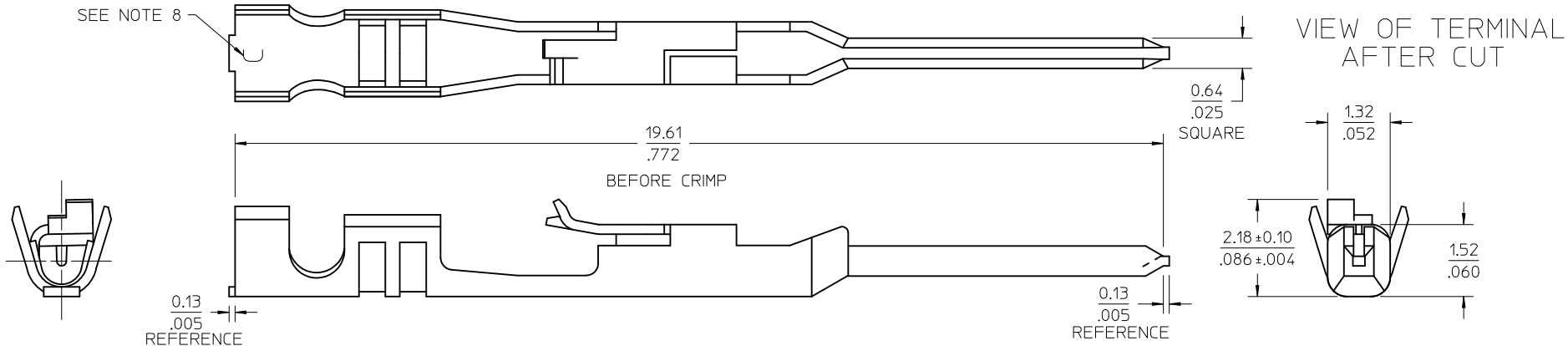
1.91	2.1	1.47	1.22	A	ø 1.6 MAX.	AWG#24-#30	バラ状 LOOSE	70021-0204	
							連鎖状 CHAIN	70021-0004	
1.91	2.1	1.65	1.84	C		AWG#22-#24	バラ状 LOOSE	70021-0221	
							連鎖状 CHAIN	70021-0021	
D	C	B	A	適用電線表示 CRIMP SIZE CODE LETTER	被覆外径 INS. RANGE	適用電線範囲 WIRE RANGE	端子形状 FORM	MATERIAL No.	
				材料 MATERIAL	磷青銅 PHOSPHOR BRONZE t 0.203	molex MOLEX-JAPAN CO.,LTD. 日本モレックス株式会社			
				仕上げ FINISH	注記参照 SEE NOTES	EDP. NO. ———			
B	変更 REVISED	(J2004-45)9	Y.W M.S	84/05/3	適用電線範囲 WIRE RANGE	表参照 SEE CHART	ENG. NO. SD-70021- 0*04 0*21		REV B
A	変更 REVISED	(T2015)9	H.H H.I	91/5/28	被覆外径 INS. RANGE	表参照 SEE CHART			
0	新規作成 RELEASED	(T01010)	A.M M.S	98/4/6	DRAWN BY A. Mitake	CHK'D BY H. Arita	TITLE 名称 SL MALE CRIMP TERMINAL -LEAD FREE-		
記号 LTR	変更内容 REVISION RECORD	DR.	日付 CHK.	DATE	APP'D BY S. Yamada	尺度 SCALE	10-1		
REVISE ONLY ON CAD SYSTEM									



NOTES:

1. MATERIAL: PHOSPHOR BRONZE, 0.20/.008 THICK
2. FINISH: 3.81 MICROMETERS/150 MICROINCHES TIN OVER NICKEL UNDERPLATE OVERALL
3. PRODUCT SPECIFICATION: PS-70021
4. PACKAGING: PARTS SUPPLIED IN REEL FORM
5. TERMINAL FOR USE WITH: 70066-**** & 70107-**** HOUSINGS
6. TERMINAL TO BE USED WITH: 22-24 AWG STRANDED WIRE WITH .064 DIAMETER MAXIMUM INSULATION
7. REFER TO MOLEX OPERATIONAL AND SERVICE MANUAL FOR DETAILS
8. CRIMP SIZE INDICATOR: C=22-24 AWG

ADD VIEWS W/CARRIER EC NO: UCP2010-2842 DRWN:MSIBARRA 2010/05/07 CHKD:JMORGAN 2010/05/07 APPR:SMILLER 2010/05/11	DESCRIPTION	QUALITY SYMBOLS <div>▽=0</div> <div>▽=0</div> <div>▽=0</div>	GENERAL TOLERANCES (UNLESS SPECIFIED)		DIMENSION STYLE IN/MM		SCALE	DESIGN UNITS INCH	THIRD ANGLE PROJECTION		
				mm	INCH	DRAWN BY MSIBARRA	DATE 2010/05/07	TITLE TERMINAL, MALE CRIMP	MOLEX INCORPORATED	DOCUMENT NO. SD-70021-0021	SHEET NO. 1 OF 1
			4 PLACES	±---	±---	CHECKED BY	DATE				
			3 PLACES	±---	±.005	MJM	1986/10/30				
			2 PLACES	±.13	±.01	APPROVED BY	DATE				
1 PLACE	±0.25	±---	SMILLER	2010/05/11							
		ANGULAR ±1/2°		MATERIAL NO. 16-02-0107							
		DRAFT WHERE APPLICABLE MUST REMAIN WITHIN DIMENSIONS									



NOTES:

1. MATERIAL: PHOSPHOR BRONZE, 0.20/0.008 THICK
2. FINISH: 3.81 MICROMETERS/150 MICROINCHES TIN OVER
NICKEL UNDERPLATE OVERALL
3. PRODUCT SPECIFICATION: PS-70021
4. PACKAGING: PARTS SUPPLIED IN REEL FORM
5. TERMINAL FOR USE WITH: 70066-**** & 70107-**** HOUSINGS
6. TERMINAL TO BE USED WITH: 22-24 AWG STRANDED WIRE WITH
.064 DIAMETER MAXIMUM INSULATION
7. REFER TO MOLEX OPERATIONAL AND SERVICE MANUAL FOR DETAILS
8. CRIMP SIZE INDICATOR: C=22-24 AWG

ADD VIEW W/CARRIER EC NO: UCP2010-2842 DRAWN: MSIBARRA 2010/05/07 CHKD: DMORGAN 2010/04/29 APPR: SMILLER 2010/05/11	DESCRIPTION	QUALITY SYMBOLS <div>▽=0</div> <div>▽=0</div> <div>▽=0</div>	GENERAL TOLERANCES (UNLESS SPECIFIED)			DIMENSION STYLE MM/IN		SCALE 15:1	DESIGN UNITS INCH	<div>THIRD ANGLE PROJECTION</div>
				mm	INCH	DRAWN BY MSIBARRA	DATE 2010/04/29	TITLE TERMINAL, MALE CRIMP		
			4 PLACES	± ---	± ---	CHECKED BY DMORGAN	DATE 2010/04/29			
			3 PLACES	± ---	± .010	APPROVED BY SMILLER	DATE 2010/05/11	MOLEX MOLEX INCORPORATED		
			2 PLACES	± 0.25	± .015	MATERIAL NO. 70021-1021		DOCUMENT NO. SD-70021-1021	SHEET NO. 1 OF 1	
	REV		DRAFT WHERE APPLICABLE MUST REMAIN WITHIN DIMENSIONS			ANGULAR ±1/2°				
						SIZE C	THIS DRAWING CONTAINS INFORMATION THAT IS PROPRIETARY TO MOLEX INCORPORATED AND SHOULD NOT BE USED WITHOUT WRITTEN PERMISSION			