



Chipsmall Limited consists of a professional team with an average of over 10 year of expertise in the distribution of electronic components. Based in Hongkong, we have already established firm and mutual-benefit business relationships with customers from,Europe,America and south Asia,supplying obsolete and hard-to-find components to meet their specific needs.

With the principle of “Quality Parts,Customers Priority,Honest Operation,and Considerate Service”,our business mainly focus on the distribution of electronic components. Line cards we deal with include Microchip,ALPS,ROHM,Xilinx,Pulse,ON,Everlight and Freescale. Main products comprise IC,Modules,Potentiometer,IC Socket,Relay,Connector.Our parts cover such applications as commercial,industrial, and automotives areas.

We are looking forward to setting up business relationship with you and hope to provide you with the best service and solution. Let us make a better world for our industry!



## Contact us

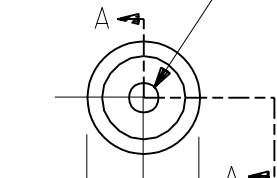
Tel: +86-755-8981 8866 Fax: +86-755-8427 6832

Email & Skype: info@chipsmall.com Web: www.chipsmall.com

Address: A1208, Overseas Decoration Building, #122 Zhenhua RD., Futian, Shenzhen, China



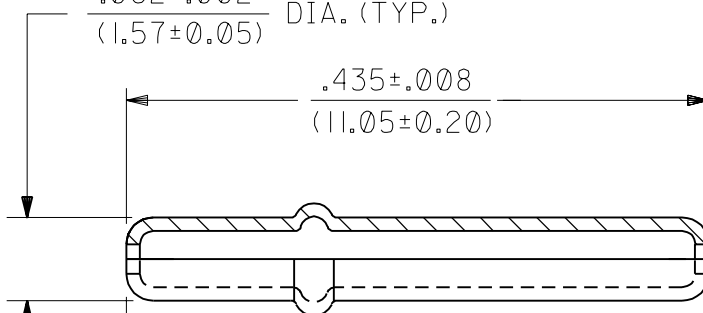
$\frac{.022}{(0.56)}$  DIA. (2PL)



$\frac{.083}{(2.11)}$  DIA.

$\frac{.062 \pm .002}{(1.57 \pm 0.05)}$  DIA. (TYP.)

$\frac{.435 \pm .008}{(11.05 \pm 0.20)}$



$\frac{.280}{(7.11)}$

$\frac{.125}{(3.18)}$

SECTION A-A

NOTES:

- 1. MATERIAL: CARTRIDGE BRASS, ALLOY #C26000.
- 2. FINISH: .000200/(0.00508) MIN. ELECTRO TIN PLATE.

A	FINAL RELEASE ECN # U10748 4-4-91 RW			
	MFG.	SH.	REV.	LTR.
	REVISIONS			

DIMENSIONS SHOWN (METRIC) INCH			
UNLESS OTHERWISE SPECIFIED TOLERANCES: ANGULAR ± 1/2°			
	INCH	METRIC	
3 PLACE	± .005	---	
2 PLACE	± .01	± 0.13	
1 PLACE	---	± 0.25	
DRAFT WHERE APPLICABLE MUST REMAIN WITHIN DIMENSIONS			
DRWG. BY	RW	CHK'D. BY	RW
APP'D. BY	GWF	SCALE	8: 1

$\nabla$ =	$\blacktriangledown$ =	REVISE ONLY ON CAD SYSTEM
TITLE . $\frac{.062}{(1.57)}$ DIA. PIN FOR P.C. BOARD MOUNTING		
	MOLEX INCORPORATED LISLE, ILL. 60532 U.S.A.	SHEET NO. 1 OF 1 DATE 04/05/91
PART NO. 16-06-0038	DRWG. NO. SDSP-603	
FILE NAME SD603X1 DGN	THIS DRAWING CONTAINS INFORMATION THAT IS PROPRIETARY TO MOLEX INC. AND SHOULD NOT BE USED WITHOUT WRITTEN PERMISSION.	DIV. CP SIZE A