



Chipsmall Limited consists of a professional team with an average of over 10 year of expertise in the distribution of electronic components. Based in Hongkong, we have already established firm and mutual-benefit business relationships with customers from,Europe,America and south Asia,supplying obsolete and hard-to-find components to meet their specific needs.

With the principle of “Quality Parts,Customers Priority,Honest Operation,and Considerate Service”,our business mainly focus on the distribution of electronic components. Line cards we deal with include Microchip,ALPS,ROHM,Xilinx,Pulse,ON,Everlight and Freescale. Main products comprise IC,Modules,Potentiometer,IC Socket,Relay,Connector.Our parts cover such applications as commercial,industrial, and automotives areas.

We are looking forward to setting up business relationship with you and hope to provide you with the best service and solution. Let us make a better world for our industry!



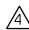
## Contact us

Tel: +86-755-8981 8866 Fax: +86-755-8427 6832

Email & Skype: [info@chipsmall.com](mailto:info@chipsmall.com) Web: [www.chipsmall.com](http://www.chipsmall.com)

Address: A1208, Overseas Decoration Building, #122 Zhenhua RD., Futian, Shenzhen, China



PART NO.	ENG. NO.	DIM. "A" 
18-09-2803	2282-(P90 I)	
18-09-2804	2282-(P90 I)L	.161±.004/(4.09±0.10)
18-09-2807	2282-(P90 I)L I	.215±.005/(5.46±0.13)
	-	
	-	
	-	

### LEGEND

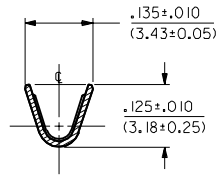
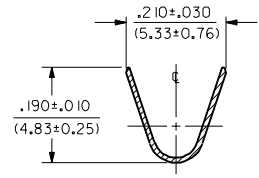
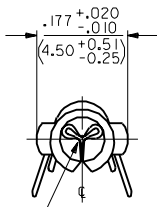
2282-(\*\*\*\*)\*\*

P=PREPLATE  
BLANK=POSTPLATE

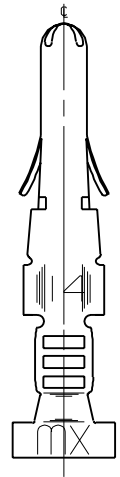
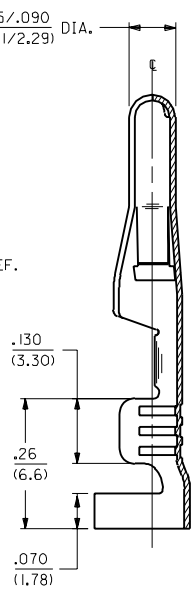
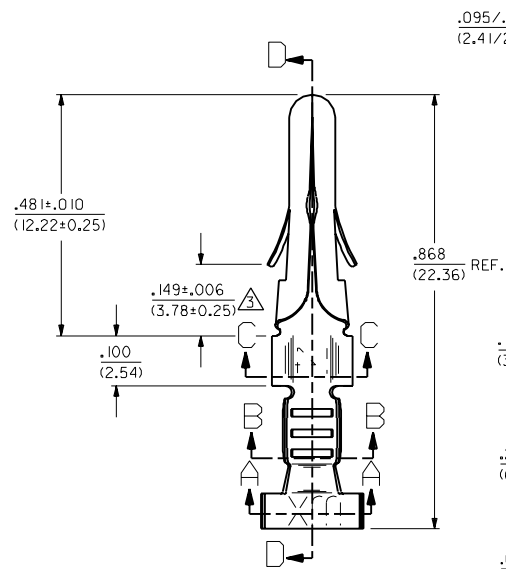
FINISH CODE

CARRIER CUTOFF WIDTH  
(ONLY APPLIES TO FORM "L")  
BLANK=.161±.004  
I=.215±.005

FORM  
BLANK=CHAIN  
L=LOOSE



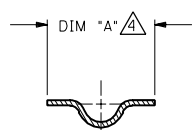
### SECTION A-A SECTION B-B



### SECTION D-D

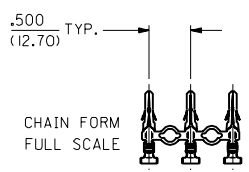
- NOTES:
1. TERMINAL WILL ACCEPT 14 - 18 AWG WIRE.
  2. TERMINAL FOR CHRYSLER CORP. USE ONLY.
  3. WHERE DENOTED, THIS DIMENSION TO BE .140-.145/(3.56-3.68) WHEN LOCK TABS ARE COMPRESSED TO .136-.142/(3.92-4.10).
  4. USE CRIMP DIE CD2052-C TO PRODUCE .161 CUT OFF AND CD2052-E TO PRODUCE .215 CUT OFF.

FINISH CODES:  
901 HOT TIN DIP .000020/(0.0005) MIN.



### SECTION C-C

MATERIAL NOTES:  
1. RED BRASS, ALLOY #C23000;  
.010/(0.25) THICK, EXTRA SPRING TEMPER.



DIMENSIONS SHOWN (METRIC) INCH		▽ = 0 ▼ = 0		MFG. SH. REV. LTR. REVISIONS													
UNLESS OTHERWISE SPECIFIED TOLERANCES: ANGULAR ± 1/2°		REVISE ONLY ON CAD SYSTEM															
<table border="1"> <thead> <tr> <th></th> <th>INCH</th> <th>METRIC</th> </tr> </thead> <tbody> <tr> <td>3 PLACE</td> <td>± .010</td> <td>---</td> </tr> <tr> <td>2 PLACE</td> <td>± .014</td> <td>± 0.25</td> </tr> <tr> <td>1 PLACE</td> <td>---</td> <td>± 0.36</td> </tr> </tbody> </table>			INCH	METRIC	3 PLACE	± .010	---	2 PLACE	± .014	± 0.25	1 PLACE	---	± 0.36	TITLE: CRIMP TERMINAL, MALE, .093/(2.36) DIA. FOR 14 THRU 18 AWG WIRE MOLEX INCORPORATED LITSEJLL 60532 U.S.A. 1 of 1 10/13/92 SHEET NO. DATE PART NO. SEE CHART SD-2282-• DRWG. NO.			
	INCH	METRIC															
3 PLACE	± .010	---															
2 PLACE	± .014	± 0.25															
1 PLACE	---	± 0.36															
DRAFT: WHERE APPLICABLE MUST REMAIN WITHIN DIMENSIONS DRWG. BY: CWF CHKD. BY: RW APP'D. BY: CWF SCALE: 6:1		FILE NAME: SD2282X1.DWG THIS DRAWING CONTAINS INFORMATION THAT IS PROPRIETARY TO MOLEX INC. AND SHOULD NOT BE USED WITHOUT WRITTEN PERMISSION. DIV. CP SIZE															

REV'D. AND REDRAW FOR U11047  
CWF 10/13/92 RW

F1

REVISIONS

REVISE ONLY ON CAD SYSTEM

CRIMP TERMINAL, MALE, .093/(2.36) DIA. FOR 14 THRU 18 AWG WIRE

MOLEX INCORPORATED

LITSEJLL 60532 U.S.A. 1 of 1 10/13/92

SHEET NO. DATE

PART NO. SEE CHART SD-2282-•

DRWG. NO.

THIS DRAWING CONTAINS INFORMATION THAT IS PROPRIETARY TO MOLEX INC. AND SHOULD NOT BE USED WITHOUT WRITTEN PERMISSION.

DIV. CP SIZE