



Chipsmall Limited consists of a professional team with an average of over 10 year of expertise in the distribution of electronic components. Based in Hongkong, we have already established firm and mutual-benefit business relationships with customers from,Europe,America and south Asia,supplying obsolete and hard-to-find components to meet their specific needs.

With the principle of "Quality Parts,Customers Priority,Honest Operation,and Considerate Service",our business mainly focus on the distribution of electronic components. Line cards we deal with include Microchip,ALPS,ROHM,Xilinx,Pulse,ON,Everlight and Freescale. Main products comprise IC,Modules,Potentiometer,IC Socket,Relay,Connector.Our parts cover such applications as commercial,industrial, and automotives areas.

We are looking forward to setting up business relationship with you and hope to provide you with the best service and solution. Let us make a better world for our industry!



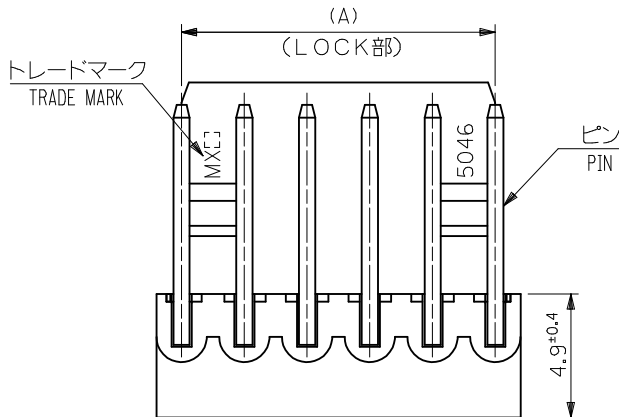
## Contact us

Tel: +86-755-8981 8866 Fax: +86-755-8427 6832

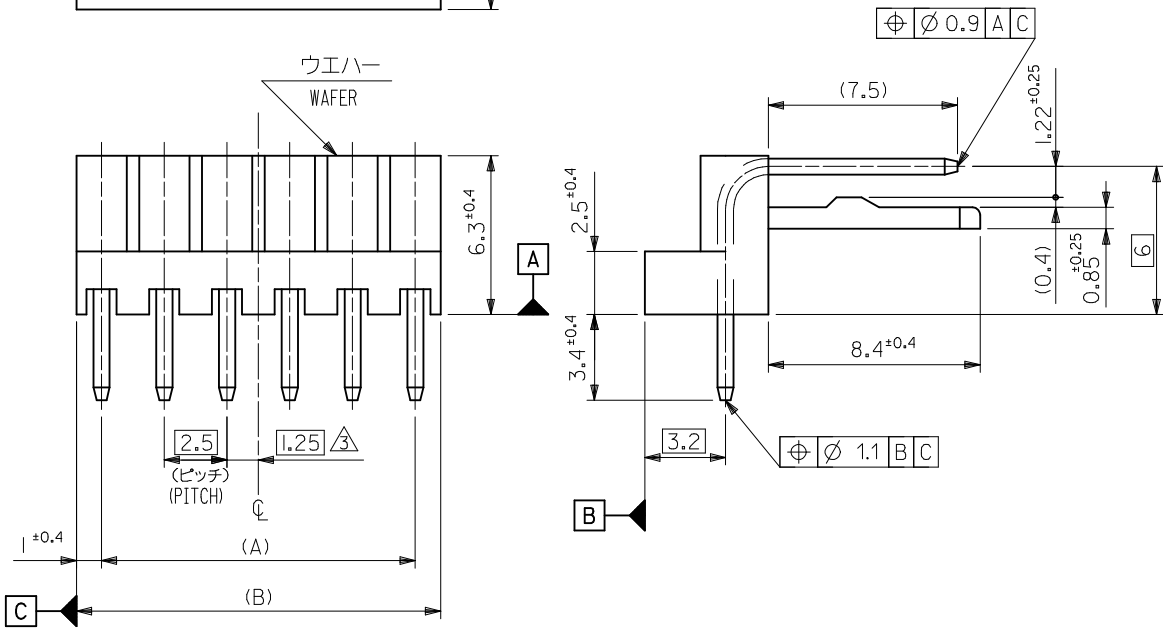
Email & Skype: info@chipsmall.com Web: www.chipsmall.com

Address: A1208, Overseas Decoration Building, #122 Zhenhua RD., Futian, Shenzhen, China

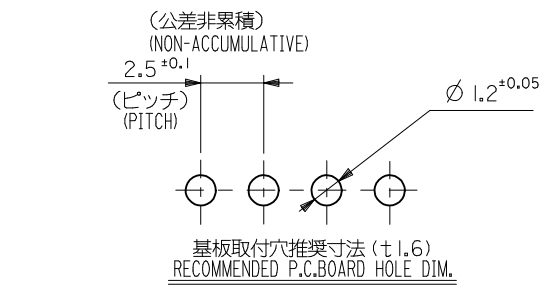




- 注記  
NOTES :
1. そりは長さ25. 4に対して0. 2MAX. CAMBER MUST BE WITHIN 0.2MAX. PER 25.4 .
  2. 材料(MATERIAL)  
ウエハー:ポリアミド, UL94V-0  
WAFER:POLYAMIDE, UL94V-0  
ピン:φ0.635 黄銅, 銅下地錫メッキ  
PIN:φ0.635 BRASS, TIN OVER COPPER PLATING.
  3. 全極数が偶数の場合のみ適用。  
APPLY FOR EVEN CIRCUITS PRODUCT ONLY.
  4. ELV 及び RoHS 適合品  
ELV AND ROHS COMPLIANT.



49.5	47.5	22 05	1202	20
47	45		1192	19
44.5	42.5		1182	18
42	40		1172	17
39.5	37.5		1162	16
37	35		1152	15
34.5	32.5		1142	14
32	30		1132	13
29.5	27.5		1122	12
27	25		1112	11
24.5	22.5		1102	10
22	20		1092	9
19.5	17.5		1082	8
17	15		1072	7
14.5	12.5		1062	6
12	10		1052	5
9.5	7.5		1042	4
7	5		1032	3
4.5	2.5	22 05	1022	2
(B)	(A)	ORDER No.	極数 CKT.	



REVISED EC NO.: J2012-0974 2012/01/30 DRWN:KASHIO CHKD:KASAKAWA 2012/01/30 APPR:NUKITA 2013/06/03	DESCRIPTION	GENERAL TOLERANCES (UNLESS SPECIFIED)		DIMENSION STYLE	SCALE	DESIGN UNITS	MODEL No. : 5046-**A	
				MM ONLY	5:1	METRIC	THIRD ANGLE PROJECTION	
		10 UNDER	±0.2	DRAWN BY	DATE	TITLE		KK2.5 R/A WAFER ASSY
		10 OVER 30 UNDER	±0.25	Y. MIZUNO	1992/01/09			
30 OVER	±0.3	H. HIRAMOTO	1994/11/11					
REV	J	ANGULAR	±3 °	APPROVED BY	DATE			
		DRAFT WHERE APPLICABLE MUST REMAIN WITHIN DIMENSIONS		MATERIAL NO.	DOCUMENT NO.	SHEET NO.		
				SIZE	THIS DRAWING CONTAINS INFORMATION THAT IS PROPRIETARY TO MOLEX INCORPORATED AND SHOULD NOT BE USED WITHOUT WRITTEN PERMISSION		1 OF 1	

E

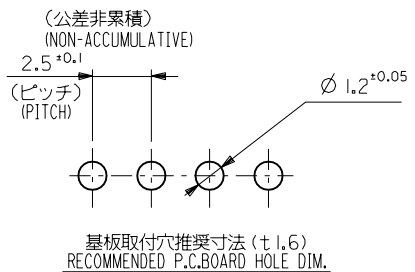
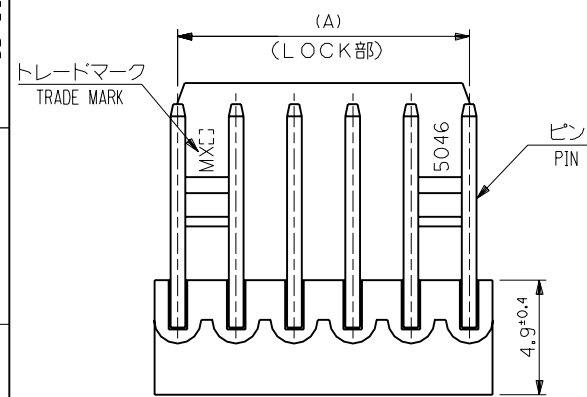
D

C

B

A

MM DIMENSIONS IN METRIC DO NOT SCALE DRAWING

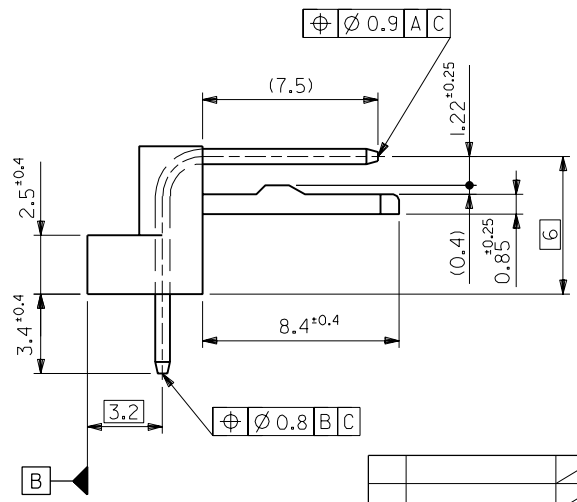
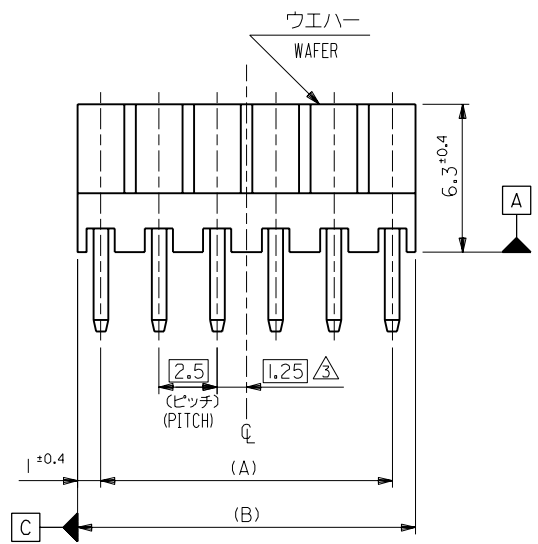


注記 NOTES :

- それは長さ25.4に対して0.2MAX. CAMBER MUST BE WITHIN 0.2MAX. PER 25.4 .
- 材料 (MATERIAL)  
 ウエハー : 66ナイロン, UL94V-0  
 WAFER: 66NYLON, UL94V-0  
 ピン : φ0.635 黄銅, 銅下地錫メッキ  
 PIN: φ0.635 BRASS, TIN OVER COPPER PLATING.

△ 全極数が偶数の場合のみ適用。 APPLY FOR EVEN CIRCUITS PRODUCT ONLY.

49.5	47.5	22-05-1202	5046-20A	20
47	45	-1192	-19A	19
44.5	42.5	-1182	-18A	18
42	40	-1172	-17A	17
39.5	37.5	-1162	-16A	16
37	35	-1152	-15A	15
34.5	32.5	-1142	-14A	14
32	30	-1132	-13A	13
29.5	27.5	-1122	-12A	12
27	25	-1112	-11A	11
24.5	22.5	-1102	-10A	10
22	20	-1092	-09A	9
19.5	17.5	-1082	-08A	8
17	15	-1072	-07A	7
14.5	12.5	-1062	-06A	6
12	10	-1052	-05A	5
9.5	7.5	-1042	-04A	4
7	5	-1032	-03A	3
4.5	2.5	22-05-1022	5046-02A	2
(B)	(A)	EDP NO.	ENG.NO.	極数 CKT.



角度 ANGLE	±3°					
30以上 OVER	+0.3					
10以上 OVER 30未満 UNDER	+0.25	H	変更 REVISION	(40895)	M.S.	H.H.
10未満 UNDER	+0.2	G	変更及び再作図 REVISION & REDRAWN	(20018)	Y.M.	H.H.
一般公差 GENERAL TOLERANCES		記号 LTR	変更内容 REVISION RECORD	DR. DATE	日付 DATE	DR. CHK.

材料 MATERIAL	注記参照 SEE NOTE
仕上げ FINISH	---
適用電線範囲 WIRE RANGE	---
被覆外径 INS. RANGE	---
DRAWN BY '92/1/3	CHK'D BY '94/1/1
Y.MIZUNO	Y.M.HIRAMOTO
APP'D BY '94/1/1	尺度 SCALE 5 : 1
M.FUKUSHIMA	

**MOLEX-JAPAN CO.,LTD.**  
 日本モレックス株式会社

REVISE ONLY ON CAD SYSTEM

TITLE 名称  
 KK2.5 RIGHT ANGLE  
 WAFER ASS'Y

DWG. NO. SD-5046-NA

REV H