



Chipsmall Limited consists of a professional team with an average of over 10 year of expertise in the distribution of electronic components. Based in Hongkong, we have already established firm and mutual-benefit business relationships with customers from,Europe,America and south Asia,supplying obsolete and hard-to-find components to meet their specific needs.

With the principle of “Quality Parts,Customers Priority,Honest Operation,and Considerate Service”,our business mainly focus on the distribution of electronic components. Line cards we deal with include Microchip,ALPS,ROHM,Xilinx,Pulse,ON,Everlight and Freescale. Main products comprise IC,Modules,Potentiometer,IC Socket,Relay,Connector.Our parts cover such applications as commercial,industrial, and automotives areas.

We are looking forward to setting up business relationship with you and hope to provide you with the best service and solution. Let us make a better world for our industry!



## Contact us

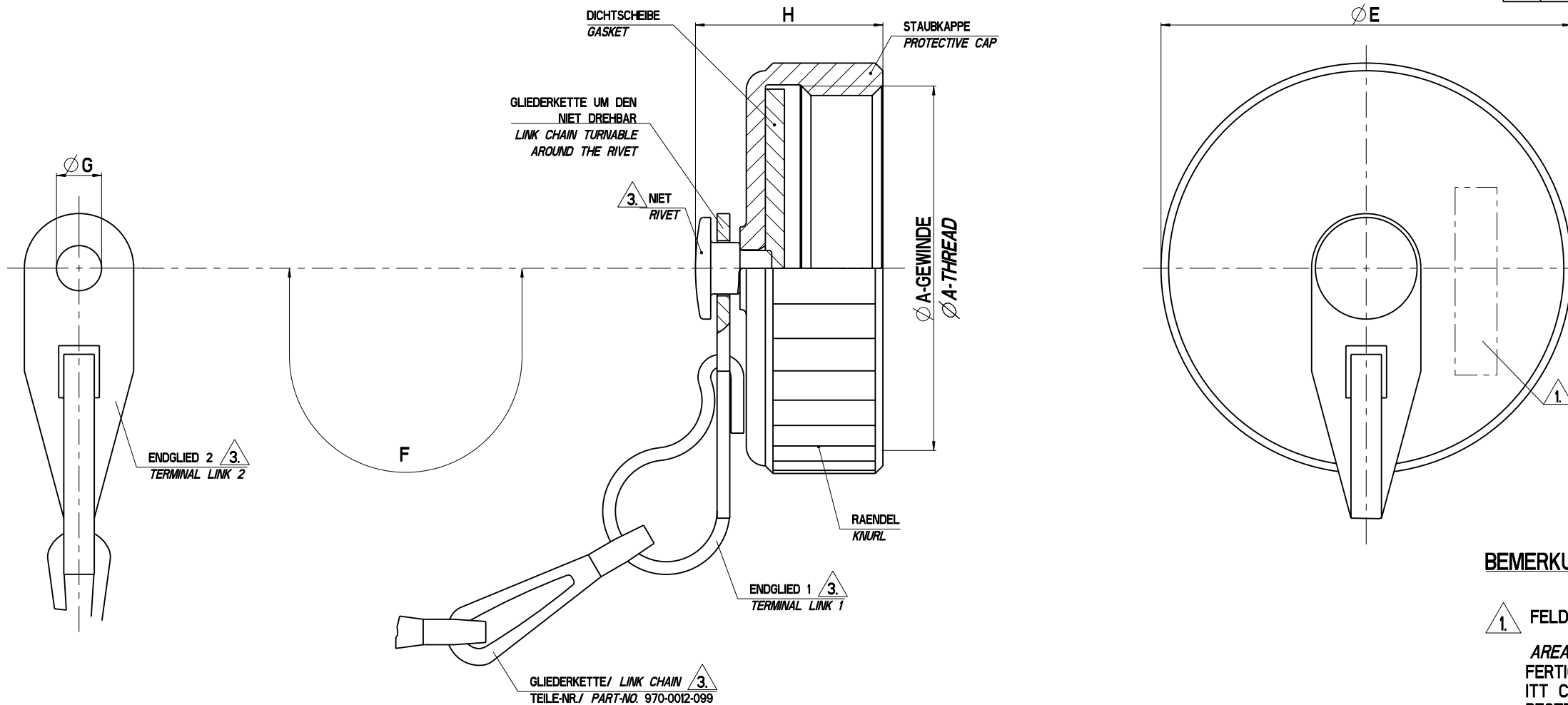
Tel: +86-755-8981 8866 Fax: +86-755-8427 6832

Email & Skype: info@chipsmall.com Web: www.chipsmall.com

Address: A1208, Overseas Decoration Building, #122 Zhenhua RD., Futian, Shenzhen, China



AUSGABE	ÄND.-NR.	ÄNDERUNGS-BESCHREIBUNG	DATUM	NAME
M	4392W	ZICH NUR NOCH FUER VERSION MIT KETTE, NEU GEZEICHNET IN PROJE	14.11.2012	JH



**BEMERKUNGEN / NOTES**

1. FELD FUER KENNZEICHNUNG  
 AREA FOR DESIGNATION  
 FERTIGUNGSJAHR/-WOCHE / MANUFACTURING YEAR/WEEK  
 ITT CANNON  
 BESTELLBEZEICHNUNG  
 ORDER DESIGNATION  
 BEI CA-COM TEILEN ENTFALLT DIE BESCHRIFTUNG  
 CA-COM PARTS ARE NOT MARKED

2. OBERFLAECHE / FINISH  
 A66: KADMIERT UND OLIV CHROMATIERT  
 A66: CADMIUM PLATED WITH OLIVE DRAB CHROMATE  
 CA-COM: VERNICKELT / NICKEL PLATED  
 A232: ZINK-COBALT, SCHWARZ  
 ZINC-COBALT, BLACK  
 A233: ZINK-COBALT, GRUEN  
 ZINC-COBALT, GREEN  
 A239: ZINK-KOBALT, SCHWARZ  
 ZINC-COBALT, BLACK  
 A240: ZINK-NICKEL, BLAU IRISIEREND  
 ZINC-NICKEL, BLUE IRIDESCENT

3. GLIEDERKETTE, ENDGLIEDER UND NIET SIND  
 AUS EDELSTAHL  
 MATERIALS OF LINK CHAIN, TERMINAL LINKS  
 AND RIVET STAINLESS STEEL

GROSSE SIZE	BESTELLBEZEICHNUNG / ORDER DESIGNATION									Ø A	D	Ø E	F	Ø G	H	
	A66			A232	A233	CA-COM / A34	A239	A240								
	MS-NR.	ITT-CANNON	VG95342T07A...	ITT-CANNON	ITT-CANNON	ITT-CANNON	ITT-CANNON	ITT-CANNON								
	MIT KETTE WITH SASH CHAIN			Ø G +0,6	MIT KETTE WITH SASH CHAIN			MIT KETTE WITH SASH CHAIN			GEWINDE THREAD	MAX.	MAX.	CA.	+0,4	MAX.
10SL	MS25043-10D	CA2209-5101-2	VG95342T07A10	4.3	CA121003-641	CA121003-621	CA121003-601	CA121003-661	CA121003-681	5/8-24UNEF-2B	11.7	20.2	100	3.4	16.0	
12S	MS25043-12D	CA2209-5102-3	VG95342T07A12	4.3	CA121003-642	CA121003-622	CA121003-602	CA121003-662	CA121003-682	3/4-20UNEF-2B	11.7	23.4	115	3.4	16.0	
14S	MS25043-14D	CA2209-5103-4	VG95342T07A14	4.3	CA121003-643	CA121003-623	CA121003-603	CA121003-663	CA121003-683	7/8-20UNEF-2B	11.7	26.6	115	3.4	16.0	
16S,16	MS25043-16D	CA2209-5104-5	VG95342T07A16	4.3	CA121003-644	CA121003-624	CA121003-604	CA121003-664	CA121003-684	1-20UNEF-2B	11.7	29.8	115	3.4	16.0	
18	MS25043-18D	CA2209-5105-6	VG95342T07A18	4.3	CA121003-646	CA121003-626	CA121003-606	CA121003-666	CA121003-686	1 1/8-18UNEF-2B	11.7	32.9	115	3.4	16.0	
20	MS25043-20D	CA2209-5106-7	VG95342T07A20	4.3	CA121003-647	CA121003-627	CA121003-607	CA121003-667	CA121003-687	1 1/4-18UNEF-2B	11.7	36.1	125	3.4	16.0	
22	MS25043-22D	CA2209-5107-8	VG95342T07A22	4.3	CA121003-648	CA121003-628	CA121003-608	CA121003-668	CA121003-688	1 3/8-18UNEF-2B	11.7	39.4	125	3.4	16.0	
24	MS25043-24D	CA2209-5108-9	VG95342T07A24	5.3	CA121003-649	CA121003-629	CA121003-609	CA121003-669	CA121003-689	1 1/2-18UNEF-2B	11.7	42.6	140	4.2	16.0	
28	MS25043-28D	CA2209-5109-10	VG95342T07A28	5.3	CA121003-650	CA121003-630	CA121003-610	CA121003-670	CA121003-690	1 3/4-18UNS-2B	13.3	48.9	200	4.2	18.0	
32	MS25043-32D	CA2209-5110-11	VG95342T07A32	6.4	CA121003-651	CA121003-631	CA121003-611	CA121003-671	CA121003-691	2-18UNS-2B	13.3	55.3	200	4.6	18.0	
36	MS25043-36D	CA2209-5111-12	VG95342T07A36	6.4	CA121003-652	CA121003-632	CA121003-612	CA121003-672	CA121003-692	2 1/4-16UN-2B	13.3	61.6	200	4.6	18.0	

WERKSTOFF: -	BEHANDLUNG: -	OBERFLAECHE: 2
PREMISSE: SEE TABELLE	MAASSE IN MM	WINKELTOLERANZ ± 0,5 °
BEARBEITET: JH	DATUM: 14.11.2012	DATENAMEN: K010124Y0002
GEPRUEFT: GWE	DATUM: 14.11.2012	REFERENZ: -
PROBARE: HAG	DATUM: -	TEILENUMMER: -
ITT Cannon GmbH D-71384 Weinstadt Germany	MASSSTAB: 5:1	BENENNUNG: STAUBKAPPE DOSE CA GR.10SL-36
© ALLE RECHTE VORBEHALTEN. AUCH FUER DEN FALL DER PATENTFORDERUNG. JEDE NETZLEISTUNG AN DRITTE IST VERBODEN.	FORMAT: A1	SEITE: 1 / 1
	ZEICHNUNGSNUMMER: K010124Y0002	ÄNDERUNGSSTAND: M