



Chipsmall Limited consists of a professional team with an average of over 10 year of expertise in the distribution of electronic components. Based in Hongkong, we have already established firm and mutual-benefit business relationships with customers from,Europe,America and south Asia,supplying obsolete and hard-to-find components to meet their specific needs.

With the principle of “Quality Parts,Customers Priority,Honest Operation,and Considerate Service”,our business mainly focus on the distribution of electronic components. Line cards we deal with include Microchip,ALPS,ROHM,Xilinx,Pulse,ON,Everlight and Freescale. Main products comprise IC,Modules,Potentiometer,IC Socket,Relay,Connector.Our parts cover such applications as commercial,industrial, and automotives areas.

We are looking forward to setting up business relationship with you and hope to provide you with the best service and solution. Let us make a better world for our industry!



Contact us

Tel: +86-755-8981 8866 Fax: +86-755-8427 6832

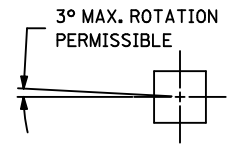
Email & Skype: info@chipsmall.com Web: www.chipsmall.com

Address: A1208, Overseas Decoration Building, #122 Zhenhua RD., Futian, Shenzhen, China

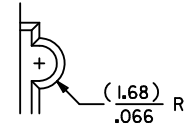


CKT. SIZE	PART NUMBER	ENG. NUMBER SDA-70204-	DIM. "A"		DIM. "B"		DIM. "C"	
			MM	IN.	MM	IN.	MM	IN.
08	25-02-1008	0323	7,62	.300	17,78	.700	20,32	.800
10	25-02-1010	0324	10,16	.400	20,32	.800	22,86	.900
12	25-02-1012	0325	12,70	.500	22,86	.900	25,40	1,000
14	25-02-1014	0326	15,24	.600	25,40	1,000	27,94	1,100
16	25-02-1016	0327	17,78	.700	27,94	1,100	30,48	1,200
18	25-02-1018	0328	20,32	.800	30,48	1,200	33,02	1,300
20	25-02-1020	0329	22,86	.900	33,02	1,300	35,56	1,400
22	25-02-1022	0330	25,40	1,000	35,56	1,400	38,10	1,500
24	25-02-1024	0331	27,94	1,100	38,10	1,500	40,64	1,600
26	25-02-1026	0332	30,48	1,200	40,64	1,600	43,10	1,700
28	25-02-1028	0333	33,02	1,300	43,10	1,700	45,72	1,800
30	25-02-1030	0334	35,56	1,400	45,72	1,800	48,26	1,900
32	25-02-1032	0335	38,10	1,500	48,26	1,900	50,80	2,000
34	25-02-1034	0336	40,64	1,600	50,80	2,000	53,34	2,100
36	25-02-1036	0337	43,10	1,700	53,34	2,100	55,88	2,200
38	25-02-1038	0338	45,72	1,800	55,88	2,200	58,42	2,300
40	25-02-1040	0339	48,26	1,900	58,42	2,300	60,96	2,400

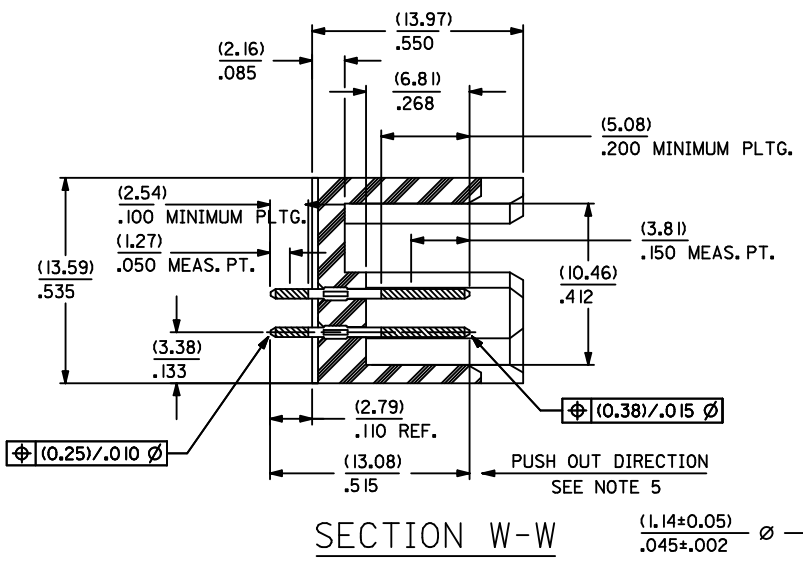
CKT. SIZE	PART NUMBER	ENG. NUMBER SDA-70204-	DIM. "A"		DIM. "B"		DIM. "C"	
			MM	IN.	MM	IN.	MM	IN.
42	25-02-1042	0340	50,80	2,000	60,96	2,400	63,50	2,500
44	25-02-1044	0341	53,34	2,100	63,50	2,500	66,04	2,600
46	25-02-1046	0342	55,88	2,200	66,04	2,600	68,58	2,700
48	25-02-1048	0343	58,42	2,300	68,58	2,700	71,12	2,800
50	25-02-1050	0344	60,96	2,400	71,12	2,800	73,66	2,900
52	25-02-1052	0345	63,50	2,500	73,66	2,900	76,20	3,000
54	25-02-1054	0346	66,04	2,600	76,20	3,000	78,74	3,100
56	25-02-1056	0347	68,58	2,700	78,74	3,100	81,28	3,200
58	25-02-1058	0348	71,12	2,800	81,28	3,200	83,82	3,300
60	25-02-1060	0349	73,66	2,900	83,82	3,300	86,36	3,400
62	25-02-1062	0350	76,20	3,000	86,36	3,400	88,90	3,500
64	25-02-1064	0351	78,74	3,100	88,90	3,500	91,44	3,600
66	25-02-1066	0352	81,28	3,200	91,44	3,600	93,98	3,700
68	25-02-1068	0353	83,82	3,300	93,98	3,700	96,52	3,800
70	25-02-1070	0354	86,36	3,400	96,52	3,800	99,06	3,900
72	25-02-1072	0355	88,90	3,500	99,06	3,900	101,60	4,000



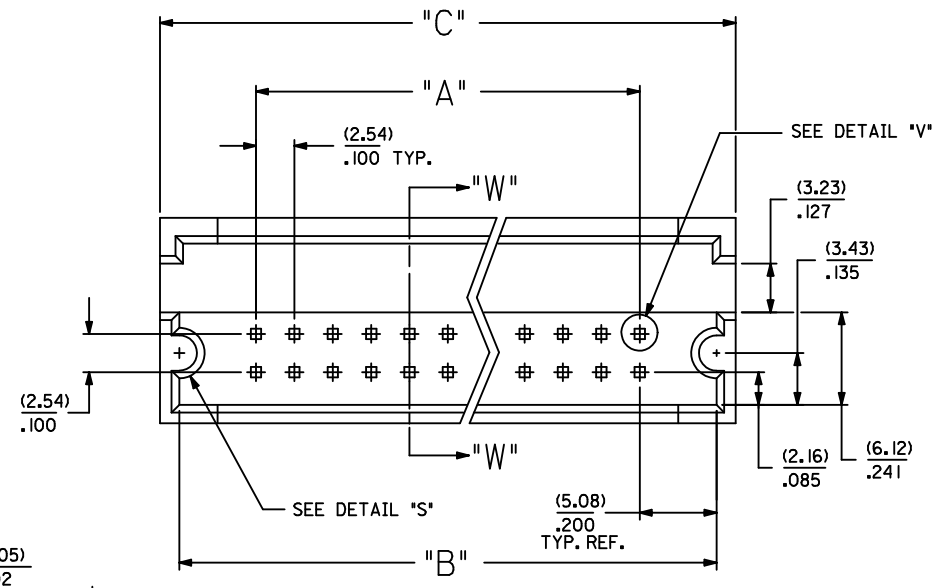
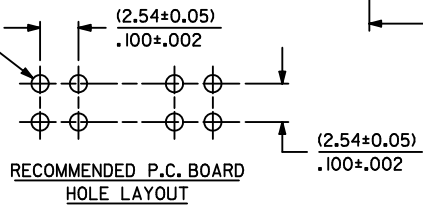
DETAIL "V"
SCALE = 20:1



DETAIL "S"



SECTION W-W



- NOTES:
1. WAFER MATERIAL: GLASS FILLED NYLON; COLOR: BLACK
 2. PIN MATERIAL: COPPER ALLOY
 3. PIN PLATING:
TIP: 30 MICROINCHES MINIMUM GOLD IN SELECTED AREA
TAIL: 75 MICROINCHES MINIMUM TIN IN SELECTED AREA
OVER NICKEL UNDERPLATE OVER-ALL
 4. PINS MUST MEET SOLDERABILITY SPEC. NO. 152
 5. PIN PUSH-OUT FORCE (1.81 KG)/4 LBS MINIMUM
 6. REFER TO P.S. NO. 70204
 7. STANDARD PACKAGING PER: PK-70873-0070

CORRECT DIMENSION EC NO: UCP2011-3892 DRW:MS BARBA 2011/06/23 CHKD:DMORGAN APPR:SMILLER 2011/07/07	QUALITY SYMBOLS	GENERAL TOLERANCES (UNLESS SPECIFIED)	DIMENSION STYLE	SCALE	DESIGN UNITS	THIRD ANGLE PROJECTION
	▽=0	mm INCH	MM/IN	4:1	INCH	
	▽=0	4 PLACES ± --- ± ---	DRAWN BY DATE	TITLE		
	▽=0	3 PLACES ± 0.25 ± .010	JAS 1986/05/20	SHROUDED HEADER DUAL ROW W/PCB SLOTS & GUIDE EARS .100 GRID .025 SQ PIN		
		2 PLACES ± --- ± ---	CHECKED BY DATE	MOLEX INCORPORATED		
		1 PLACE ± --- ± ---	EIK 1986/05/20	SDA-70204-0321-0384		
		ANGULAR ±1/2°	APPROVED BY DATE	1 OF 1		
			WAZ 1986/05/20	SHEET NO.		
			MATERIAL NO.	DOCUMENT NO.		
			SEE TABLE	SDA-70204-0321-0384		
			DRAFT WHERE APPLICABLE MUST REMAIN WITHIN DIMENSIONS	THIS DRAWING CONTAINS INFORMATION THAT IS PROPRIETARY TO MOLEX INCORPORATED AND SHOULD NOT BE USED WITHOUT WRITTEN PERMISSION		