



Chipsmall Limited consists of a professional team with an average of over 10 year of expertise in the distribution of electronic components. Based in Hongkong, we have already established firm and mutual-benefit business relationships with customers from,Europe,America and south Asia,supplying obsolete and hard-to-find components to meet their specific needs.

With the principle of “Quality Parts,Customers Priority,Honest Operation,and Considerate Service”,our business mainly focus on the distribution of electronic components. Line cards we deal with include Microchip,ALPS,ROHM,Xilinx,Pulse,ON,Everlight and Freescale. Main products comprise IC,Modules,Potentiometer,IC Socket,Relay,Connector.Our parts cover such applications as commercial,industrial, and automotives areas.

We are looking forward to setting up business relationship with you and hope to provide you with the best service and solution. Let us make a better world for our industry!



Contact us

Tel: +86-755-8981 8866 Fax: +86-755-8427 6832

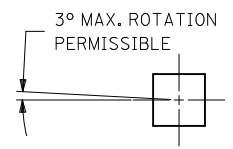
Email & Skype: info@chipsmall.com Web: www.chipsmall.com

Address: A1208, Overseas Decoration Building, #122 Zhenhua RD., Futian, Shenzhen, China

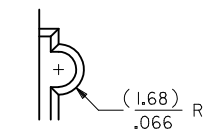


CKT. SIZE	PART NUMBER	ENG. NUMBER SDA-70204-	DIM. "A"		DIM. "B"		DIM. "C"	
			MM	IN.	MM	IN.	MM	IN.
08	25-02-2008	0387	7,62	.300	17,78	.700	20,32	.800
10	25-02-2010	0388	10,16	.400	20,32	.800	22,86	.900
12	25-02-2012	0389	12,70	.500	22,86	.900	25,40	1.000
14	25-02-2014	0390	15,24	.600	25,40	1.000	27,94	1.100
16	25-02-2016	0391	17,78	.700	27,94	1.100	30,48	1.200
18	25-02-2018	0392	20,32	.800	30,48	1.200	33,02	1.300
20	25-02-2020	0393	22,86	.900	33,02	1.300	35,56	1.400
22	25-02-2022	0394	25,40	1.000	35,56	1.400	38,10	1.500
24	25-02-2024	0395	27,94	1.100	38,10	1.500	40,64	1.600
26	25-02-2026	0396	30,48	1.200	40,64	1.600	43,10	1.700
28	25-02-2028	0397	33,02	1.300	43,10	1.700	45,72	1.800
30	25-02-2030	0398	35,56	1.400	45,72	1.800	48,26	1.900
32	25-02-2032	0399	38,10	1.500	48,26	1.900	50,80	2.000
34	25-02-2034	0400	40,64	1.600	50,80	2.000	53,34	2.100
36	25-02-2036	0401	43,10	1.700	53,34	2.100	55,88	2.200
38	25-02-2038	0402	45,72	1.800	55,88	2.200	58,42	2.300
40	25-02-2040	0403	48,26	1.900	58,42	2.300	60,96	2.400

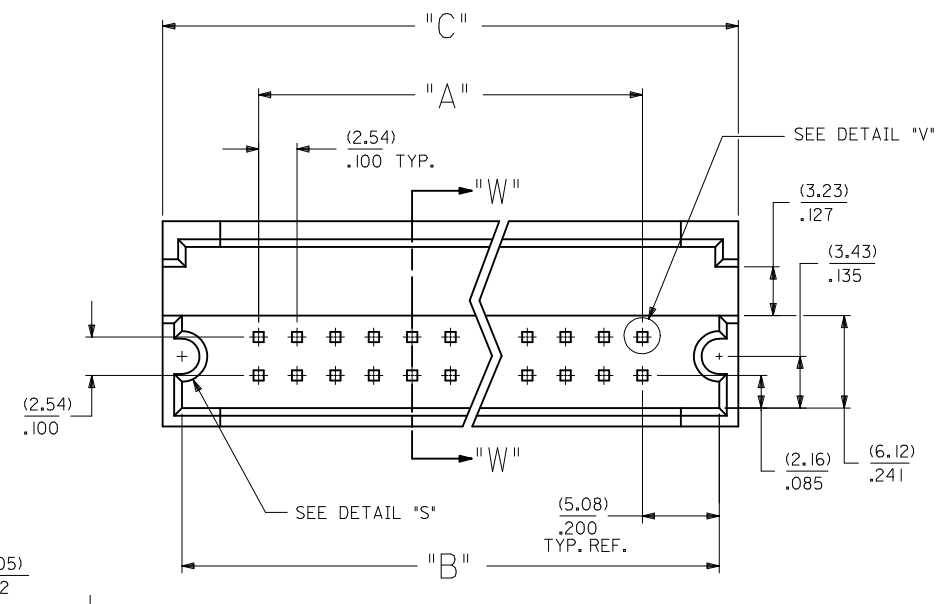
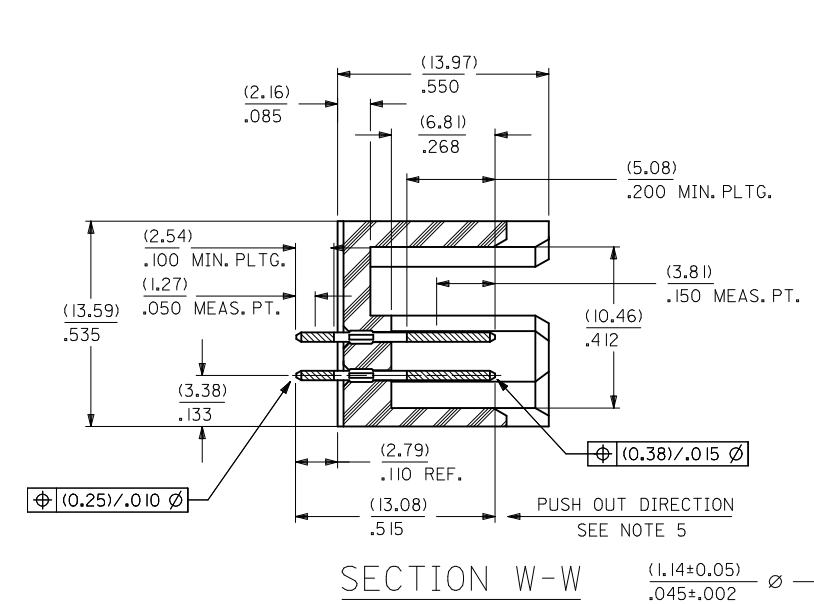
CKT. SIZE	PART NUMBER	ENG. NUMBER SDA-70204-	DIM. "A"		DIM. "B"		DIM. "C"	
			MM	IN.	MM	IN.	MM	IN.
42	25-02-2042	0404	50,80	2.000	60,96	2.400	63,50	2.500
44	25-02-2044	0405	53,34	2.100	63,50	2.500	66,04	2.600
46	25-02-2046	0406	55,88	2.200	66,04	2.600	68,58	2.700
48	25-02-2048	0407	58,42	2.300	68,58	2.700	71,12	2.800
50	25-02-2050	0408	60,96	2.400	71,12	2.800	73,66	2.900
52	25-02-2052	0409	63,50	2.500	73,66	2.900	76,20	3.000
54	25-02-2054	0410	66,04	2.600	76,20	3.000	78,74	3.100
56	25-02-2056	0411	68,58	2.700	78,74	3.100	81,28	3.200
58	25-02-2058	0412	71,12	2.800	81,28	3.200	83,82	3.300
60	25-02-2060	0413	73,66	2.900	83,82	3.300	86,36	3.400
62	25-02-2062	0414	76,20	3.000	86,36	3.400	88,90	3.500
64	25-02-2064	0415	78,74	3.100	88,90	3.500	91,44	3.600
66	25-02-2066	0416	81,28	3.200	91,44	3.600	93,98	3.700
68	25-02-2068	0417	83,82	3.300	93,98	3.700	96,52	3.800
70	25-02-2070	0418	86,36	3.400	96,52	3.800	99,06	3.900
72	25-02-2072	0419	88,90	3.500	99,06	3.900	101,60	4.000



DETAIL "V"
SCALE = 20:1



DETAIL "S"



RECOMMENDED P.C. BOARD HOLE LAYOUT

- NOTES:
 1. WAFER MATERIAL: GLASS FILLED NYLON; COLOR: BLACK
 2. PIN MATERIAL: COPPER ALLOY
 3. PIN PLATING:
 OVERALL: 150 MICRONS MINIMUM TIN
 OVER NICKEL UNDERPLATE
 4. PINS MUST MEET SOLDERABILITY SPEC. NO. 152
 5. PIN PUSH-OUT FORCE (1.81 KG)/4 LBS MINIMUM
 6. REFER TO P.S. NO. 70204
 7. STANDARD PACKAGING PER: PK-70873-0070

REV	DESCRIPTION	DATE	APPROVED
1	DRINKINS BARRA	2011/06/27	
	CHKD: MORGAN		
	APPR: MILLER	2011/07/07	

CORRECT DIMENSION	GENERAL TOLERANCES (UNLESS SPECIFIED)	
	mm	INCH
4 PLACES	± .010	± .004
3 PLACES	± .010	± .004
2 PLACES	± .025	± .010
1 PLACE	± .050	± .020
ANGULAR		± 1/2°

DIMENSION STYLE		SCALE	DESIGN UNITS	THIRD ANGLE PROJECTION
MM/IN		4:1	INCH	
DRAWN BY	DATE	TITLE		
JAS	1986/05/20	SHROUDED HEADER DUAL ROW W/PCB SLOTS & GUIDE EARS .100 GRID, .025 SQ PIN		
CHECKED BY	DATE	MOLEX MOLEX INCORPORATED		
EIK	1986/05/20	SDA-70204-0385-0448		
APPROVED BY	DATE	SHEET NO. 1 OF 1		
WAZ	1986/05/20			
MATERIAL NO.	DOCUMENT NO.			
SEE TABLE	SDA-70204-0385-0448			

THIS DRAWING CONTAINS INFORMATION THAT IS PROPRIETARY TO MOLEX INCORPORATED AND SHOULD NOT BE USED WITHOUT WRITTEN PERMISSION