



Chipsmall Limited consists of a professional team with an average of over 10 year of expertise in the distribution of electronic components. Based in Hongkong, we have already established firm and mutual-benefit business relationships with customers from,Europe,America and south Asia,supplying obsolete and hard-to-find components to meet their specific needs.

With the principle of “Quality Parts,Customers Priority,Honest Operation,and Considerate Service”,our business mainly focus on the distribution of electronic components. Line cards we deal with include Microchip,ALPS,ROHM,Xilinx,Pulse,ON,Everlight and Freescale. Main products comprise IC,Modules,Potentiometer,IC Socket,Relay,Connector.Our parts cover such applications as commercial,industrial, and automotives areas.

We are looking forward to setting up business relationship with you and hope to provide you with the best service and solution. Let us make a better world for our industry!



Contact us

Tel: +86-755-8981 8866 Fax: +86-755-8427 6832

Email & Skype: info@chipsmall.com Web: www.chipsmall.com

Address: A1208, Overseas Decoration Building, #122 Zhenhua RD., Futian, Shenzhen, China



Voltage selector switch with fuseholder, 6 stages, serie-parallel, panel mounting



Description

- Voltage Selector , with fuseholder , 6 stages
- Series-parallel connections
- For 5 x 20 mm fuse-links
- Solder terminals or quick connect terminals 2.8 x 0.5 mm

Standards

- IEC 61058-2-5
- UL 508
- CSA C22.2 no. 55

References

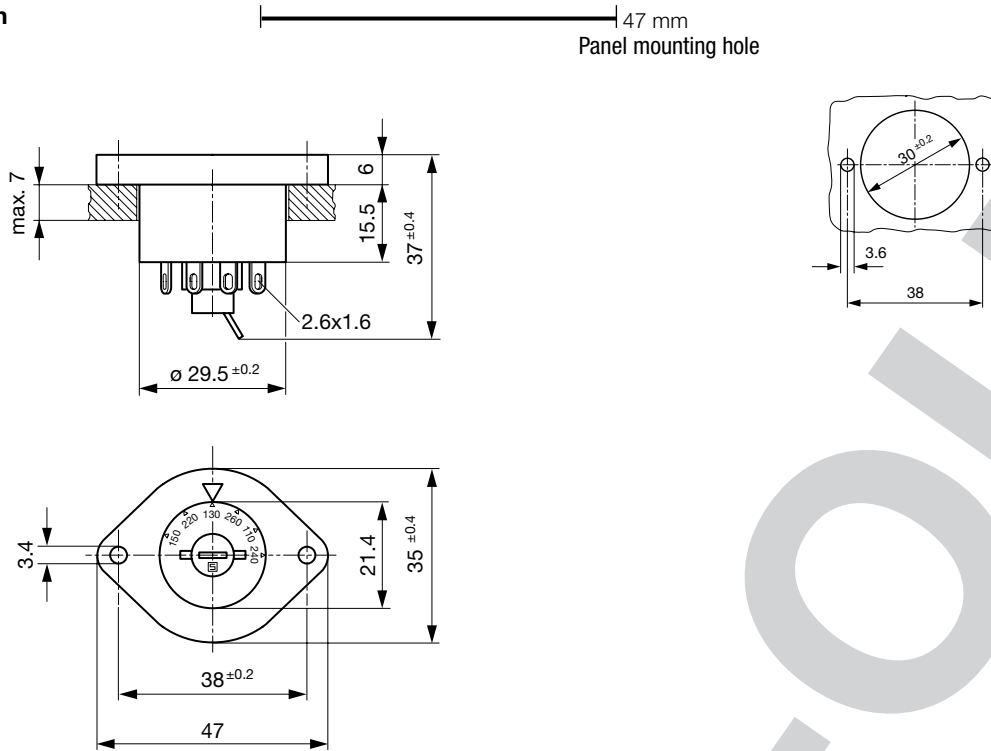
We recommend for new applications the type [SWZ1 \(Frontpl\)](#)
Last order date: 31.12.2016

Technical Data

Ratings	IEC: 6.3 A / 250 VAC; 50 Hz	Solderability	350 °C / 2 sec acc. to IEC 60068-2-20, Test Ta, method 2	
	UL: 10 A / 250 VAC; 60 Hz		Resistance to Soldering Heat	350 °C / 5 sec acc. to IEC 60068-2-20, Test Tb, method 1B
	CSA: 6.3 A / 250 VAC; 60 Hz			Insulation Resistance
Mounting	Panel Mount from front side	Contact Resistance	< 10 mΩ at 20 mV	
Fastening	Screw-on mounting	Dielectric Strength	> 2kVAC between L-N > 4kVAC between L/N-PE (1min; 50Hz)	
Terminal	Solder or Quick-Connect	Clearance and Creepage Di- stance	> 3mm > 8mm between L/N-PE	
Number of Stages	6	Resistance to Vibration	acc. to IEC 60068-2-6, test Fc	
Lifetime	300 operating cycles (without load)			
Shock-Safe Category	PC2			
Protection Class	Suitable for appliances with protection class II acc. to IEC 61140			
Allowable Operation Tempe- rature	-40 °C to 70 °C			
Climatic Category	25/85/21 acc. to IEC 60068-1			
Material: Socket	Thermoplastic, black, UL 94V-0			
Weight	23.2 g			

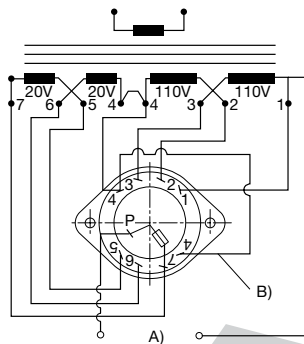
Detailed information on product approvals, code requirements, usage instructions and detailed test conditions can be looked up in [General Product Information](#)

Dimension



Diagrams

Reverse view



A) Power mains
B) External connection

All Variants

Letterings						Terminal	Order Number
Stage 1	Stage 2	Stage 3	Stage 4	Stage 5	Stage 6		
150	220	130	260	110	240	Solder terminals	0033.6001
						Solder terminals	0033.6014
150	220	130	260	110	240	Quick connect terminals 2.8 x 0.5 mm	0033.6101
						Quick connect terminals 2.8 x 0.5 mm	0033.6114

Availability for all products can be searched real-time: <http://www.schurter.com/en/Stock-Check/Stock-Check-SCHURTER>

Packaging Unit 50 Pcs