



Chipsmall Limited consists of a professional team with an average of over 10 year of expertise in the distribution of electronic components. Based in Hongkong, we have already established firm and mutual-benefit business relationships with customers from,Europe,America and south Asia,supplying obsolete and hard-to-find components to meet their specific needs.

With the principle of “Quality Parts,Customers Priority,Honest Operation,and Considerate Service”,our business mainly focus on the distribution of electronic components. Line cards we deal with include Microchip,ALPS,ROHM,Xilinx,Pulse,ON,Everlight and Freescale. Main products comprise IC,Modules,Potentiometer,IC Socket,Relay,Connector.Our parts cover such applications as commercial,industrial, and automotives areas.

We are looking forward to setting up business relationship with you and hope to provide you with the best service and solution. Let us make a better world for our industry!



Contact us

Tel: +86-755-8981 8866 Fax: +86-755-8427 6832

Email & Skype: info@chipsmall.com Web: www.chipsmall.com

Address: A1208, Overseas Decoration Building, #122 Zhenhua RD., Futian, Shenzhen, China



E

D

1. DIMENSIONS IN METRIC DO NOT SCALE DRAWING

B

A

1. DIMENSIONS IN METRIC DO NOT SCALE DRAWING

8

7

6

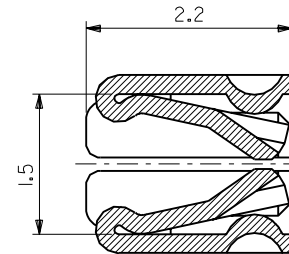
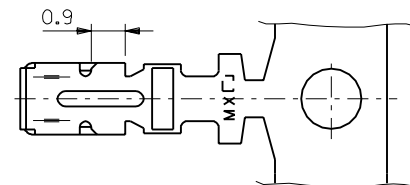
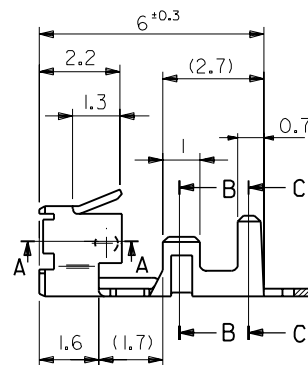
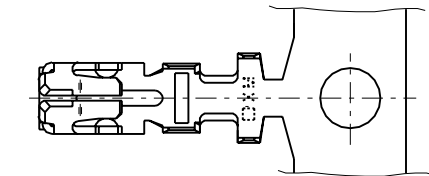
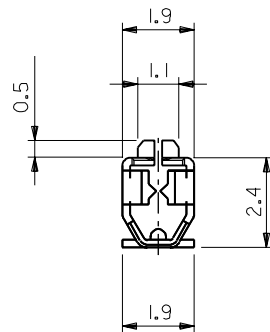
5

4

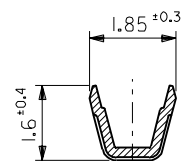
3

2

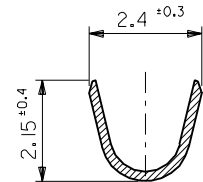
1



SECT. A-A
(SCALE 20:1)



SECT. B-B
(SCALE 10:1)



SECT. C-C
(SCALE 10:1)

注記
NOTES

1. 適用ハウジング : 5480-N シリーズ
APPLICABLE HOUSING : 5480-N SERIES

角度 ANGLE	±3°
30 以上 OVER	±0.3
10 以上 30 未満 OVER UNDER	±0.25
10 未満 UNDER	±0.2
一般公差 GENERAL TOLERANCES	

記号 LTR	変更内容 REVISION RECORD	DR. CHK.	日付 DATE
G	変更 REVISED	Y.K.	'98/7/6
F	変更及び再作図 REVISED & REDRAWN	Y.K.	'98/5/6

材料 MATERIAL	リン青銅 , 錫メッキ t=0.2
WIRE RANGE	0.33-0.08 mm ²
仕上げ FINISH	—
適用電線範囲 INS. RANGE	AWG #22-#28
被覆外径 INS. RANGE	φ 1.8MAX
DRAWN BY	'98/5/6 Y.KANNO
CHK'D BY	'98/7/7 K.T. S.KUNISHI
APP'D BY	'98/7/7 M.FUKUSHIMA
尺度 SCALE	—

バラ状 LOOSE	39-00-0031	5479PBT
連鎖状 CHAIN	39-00-0023	5479PBT
端子形状 FORM	EDP NO.	ENG. NO.

molex	MOLEX-JAPAN CO.,LTD. 日本モレックス株式会社
REVISE ONLY ON CAD SYSTEM	
TITLE 名称 2.5 LOW PROFILE CRIMP RECEPTACLE	

DWG. NO.	SD-5479PBT
REV	G