



Chipsmall Limited consists of a professional team with an average of over 10 year of expertise in the distribution of electronic components. Based in Hongkong, we have already established firm and mutual-benefit business relationships with customers from,Europe,America and south Asia,supplying obsolete and hard-to-find components to meet their specific needs.

With the principle of “Quality Parts,Customers Priority,Honest Operation,and Considerate Service”,our business mainly focus on the distribution of electronic components. Line cards we deal with include Microchip,ALPS,ROHM,Xilinx,Pulse,ON,Everlight and Freescale. Main products comprise IC,Modules,Potentiometer,IC Socket,Relay,Connector.Our parts cover such applications as commercial,industrial, and automotives areas.

We are looking forward to setting up business relationship with you and hope to provide you with the best service and solution. Let us make a better world for our industry!



Contact us

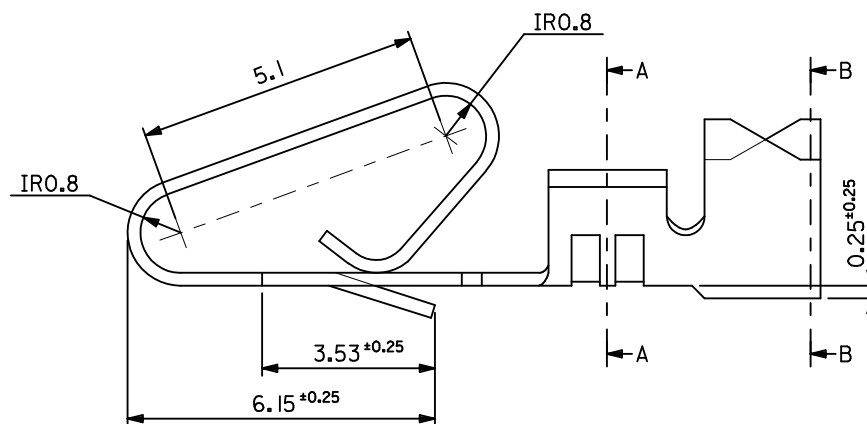
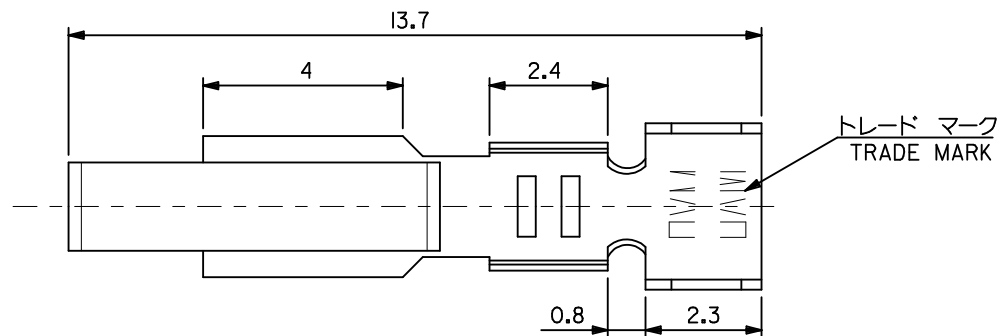
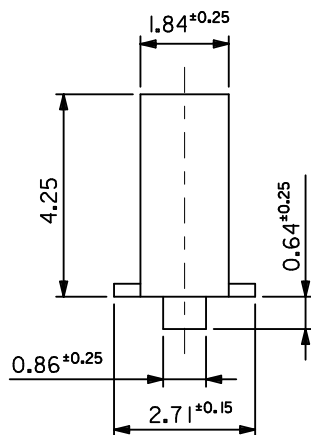
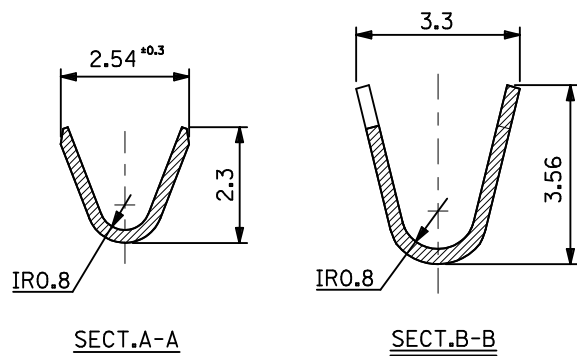
Tel: +86-755-8981 8866 Fax: +86-755-8427 6832

Email & Skype: info@chipsmall.com Web: www.chipsmall.com

Address: A1208, Overseas Decoration Building, #122 Zhenhua RD., Futian, Shenzhen, China



10 9 8 7 6 5 4 3 2 1



注記 NOTES :
1. 一般公差 : ±0.4
GENERAL TOLERANCES: ±0.4

OVERALL TIN 0.88μmin	39000342	2478TL	LOOSE
OVERALL COPPER 0.54μmin	39000286	2478T	CHAIN
ニッケル下地 2 μmMIN.	39-00-0344	2478GL	バラ状 LOOSE
金 0.35 μmMIN.	39-00-0343	2478G	チェーン状 CHAIN
GOLD 0.35 μmMIN. OVER			
NICKEL 2 μmMIN.			
メッキ PLATING	EDP NO.	ENG.NO.	形状 FORM

MATERIAL
BRASS t = 0.254

ENTER DESCRIPTION	EC NO: I2010-0695	2010/06/23	2010/07/28
DRWN: NS01	CHKD: HIRAMOT	1996/01/30	APPR: KPRASAD
REV	DESCRIPTION	QUALITY SYMBOLS	
		▽=0	
		⊕=0	

GENERAL TOLERANCES (UNLESS SPECIFIED)	
4 PLACES	± 0.2
3 PLACES	± 0.25
2 PLACES	± 0.3
1 PLACE	± 0.01
ANGULAR ± 3 °	
DRAFT WHERE APPLICABLE MUST REMAIN WITHIN DIMENSIONS	

DIMENSION STYLE	
MM ONLY	
DRAWN BY	DATE
HHASEGAW	1993/04/23
CHECKED BY	DATE
HHIRAMOT	1996/01/30
APPROVED BY	DATE
MFUKUSHI	1996/01/30
MATERIAL NO.	
SEE CHART	
SIZE	A3

SCALE	10:1
DESIGN UNITS	METRIC
THIRD ANGLE PROJECTION	
STD KK CRIMP REC	
MOLEX INCORPORATED	
DOCUMENT NO.	SD-2478*
SHEET NO. 1 OF 1	
THIS DRAWING CONTAINS INFORMATION THAT IS PROPRIETARY TO MOLEX INCORPORATED AND SHOULD NOT BE USED WITHOUT WRITTEN PERMISSION	