



Chipsmall Limited consists of a professional team with an average of over 10 year of expertise in the distribution of electronic components. Based in Hongkong, we have already established firm and mutual-benefit business relationships with customers from,Europe,America and south Asia,supplying obsolete and hard-to-find components to meet their specific needs.

With the principle of “Quality Parts,Customers Priority,Honest Operation,and Considerate Service”,our business mainly focus on the distribution of electronic components. Line cards we deal with include Microchip,ALPS,ROHM,Xilinx,Pulse,ON,Everlight and Freescale. Main products comprise IC,Modules,Potentiometer,IC Socket,Relay,Connector.Our parts cover such applications as commercial,industrial, and automotives areas.

We are looking forward to setting up business relationship with you and hope to provide you with the best service and solution. Let us make a better world for our industry!



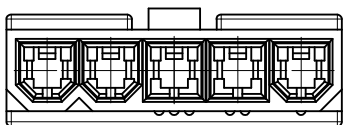
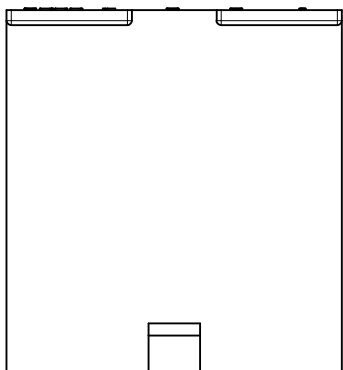
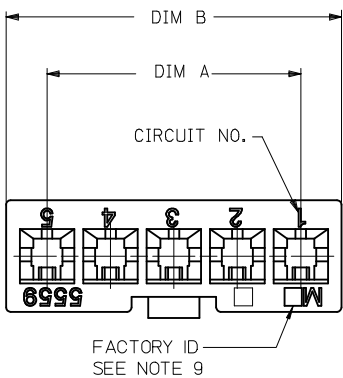
Contact us

Tel: +86-755-8981 8866 Fax: +86-755-8427 6832

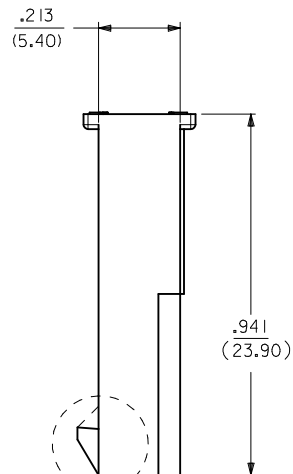
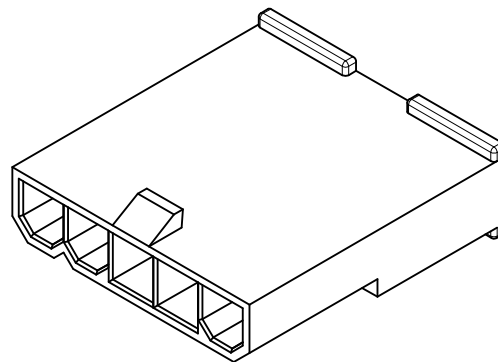
Email & Skype: info@chipsmall.com Web: www.chipsmall.com

Address: A1208, Overseas Decoration Building, #122 Zhenhua RD., Futian, Shenzhen, China





5 CKT WITHOUT
MOUNTING EARS SHOWN



LOCK OPTION:



POSITIVE LOCK PASSIVE LOCK

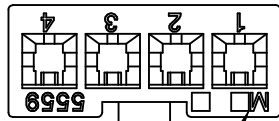
CKT SIZE	DIM A	DIM B	DIM C	DIM D
2	.165 (4.20)	.378 (9.60)	.394 (10.00)	.591 (15.00)
4	.496 (12.60)	.709 (18.00)	.724 (18.40)	.921 (23.40)
5	.661 (16.80)	.874 (22.20)	.890 (22.60)	1.087 (27.60)
6	.827 (21.00)	1.039 (26.40)	1.055 (26.80)	1.252 (31.80)
7	.992 (25.20)	1.205 (30.60)	1.220 (31.00)	1.417 (36.00)
8	1.157 (29.40)	1.370 (34.80)	1.386 (35.20)	1.583 (40.20)
9	1.323 (33.60)	1.535 (39.00)	1.551 (39.40)	1.748 (44.40)
10	1.488 (37.80)	1.701 (43.20)	1.717 (43.60)	1.913 (48.60)
11	1.654 (42.00)	1.866 (47.40)	1.882 (47.80)	2.079 (52.80)
12	1.819 (46.20)	2.031 (51.60)	2.047 (52.00)	2.244 (57.00)

NOTES:

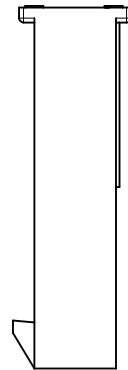
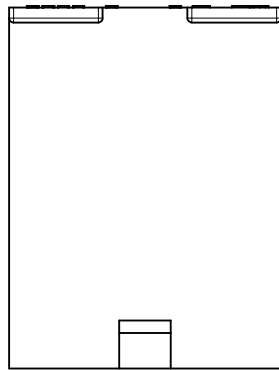
- MATERIAL: BLANK=NYLON 6/6, UL 94V-2, COLOR: NATURAL.
210=NYLON 6/6, UL 94V-0, COLOR: NATURAL.
400=NYLON 6/6, UL 94 V-0, COLOR: BLACK.
- FINISH: NOTE APPLICABLE
- PRODUCT SPECIFICATION: PS-5556-001
- PACKAGING SPECIFICATION: BULK PER PK-5559-003
- THIS PART MATES WITH RECEPTACLE NO. 5557.
- THIS PART IS FOR USE WITH MOLEX MALE TERMINAL NO. 5558-*
- PANEL MOUNT VERSION IS FOR USE WITH .031/.079/1.0/2.00 THICK PANELS.
- PANEL SHOULD BE PUNCHED IN THE DIRECTION OF CONNECTOR INSERTION.
- FACTORY ID MAY BE LOCATED ON EARS.
- THIS PART CONFORMS TO CLASS B REQUIREMENTS OF COSMETIC SPECIFICATION PS-45499-002.
- PART IS NOT DESIGNED FOR CURRENT SHARING.
- PARTS ARE NOT TO BE MATED OR UNMATED WHILE CIRCUITS ARE LIVE.
- WIRES ARE TO BE DRESSED IN SUCH A MANNER TO ALLOW THE TERMINALS TO FLOAT FREELY IN THE POCKET.

ADD 2 CKT EC NO: UCP2015-1291 DRVN: NGUYEN CHKD: BELL APPR: FSMITH 2014/11/12 2014/11/12 2015/02/09	QUALITY SYMBOLS 	GENERAL TOLERANCES (UNLESS SPECIFIED)		DIMENSION STYLE IN/MM		SCALE 4:1	DESIGN UNITS METRIC	THIRD ANGLE PROJECTION			
		4 PLACES ± --- ± ---	3 PLACES ± --- ± .010	2 PLACES ± 0.25 ± .015	1 PLACE ± 0.38 ± ---	0 PLACE ± ±	DRAWN BY KSS	DATE 2/19/89	TITLE MINI-FIT JR. SERIES PLUG (SINGLE ROW)		
		ANGULAR ±1/2°					CHECKED BY RJF	DATE 2/19/89	APPROVED BY FSMITH		
		DRAFT WHERE APPLICABLE MUST REMAIN WITHIN DIMENSIONS					MATERIAL NO. SEE CHART	DATE 2011/03/10	DOCUMENT NO. SD-5559-NLP*		SHEET NO. 1 OF 3

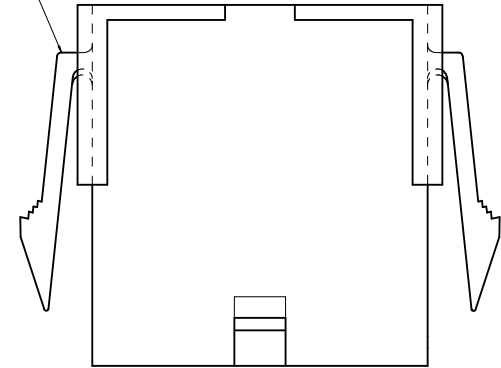
THIS DRAWING CONTAINS INFORMATION THAT IS PROPRIETARY TO MOLEX INCORPORATED AND SHOULD NOT BE USED WITHOUT WRITTEN PERMISSION



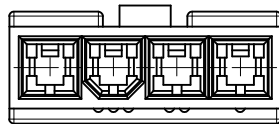
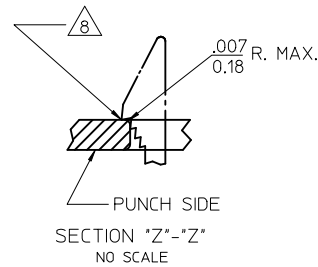
FACTORY ID
SEE NOTE 9



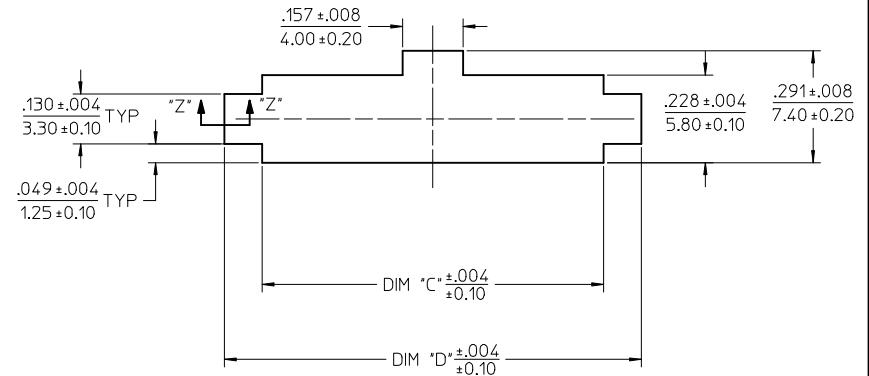
SEE NOTE 9



WITH MOUNTING EARS



4 CKT WITHOUT
MOUNTING EARS SHOWN



RECOMMENDED PANEL CUT-OUT
(SEE NOTE 7 & 8)



2 CIRCUIT



6 CIRCUIT

POLARIZATION

SEE SHEET 1 EC NO: UCP2015-1291 DRAWINGUYEN 2014/11/12 CHKD:JBELL 2014/11/12 APPR:FSMITH 2015/02/09 J9	QUALITY SYMBOLS 	GENERAL TOLERANCES (UNLESS SPECIFIED)		DIMENSION STYLE IN/MM	SCALE 4:1	DESIGN UNITS METRIC	THIRD ANGLE PROJECTION																		
		<table border="1"> <tr> <th></th> <th>mm</th> <th>INCH</th> </tr> <tr> <td>4 PLACES</td> <td>± ---</td> <td>± ---</td> </tr> <tr> <td>3 PLACES</td> <td>± ---</td> <td>±.010</td> </tr> <tr> <td>2 PLACES</td> <td>± 0.25</td> <td>±.015</td> </tr> <tr> <td>1 PLACE</td> <td>± 0.38</td> <td>± ---</td> </tr> <tr> <td>0 PLACE</td> <td>±</td> <td>±</td> </tr> </table>		mm	INCH	4 PLACES	± ---	± ---	3 PLACES	± ---	±.010	2 PLACES	± 0.25	±.015	1 PLACE	± 0.38	± ---	0 PLACE	±	±	DRAWN BY KSS	DATE 2/19/89	TITLE MINI-FIT JR. SERIES PLUG (SINGLE ROW)		
		mm	INCH																						
	4 PLACES	± ---	± ---																						
3 PLACES	± ---	±.010																							
2 PLACES	± 0.25	±.015																							
1 PLACE	± 0.38	± ---																							
0 PLACE	±	±																							
	ANGULAR ±1/2°	APPROVED BY FSMITH	DATE 2011/03/10																						
	DRAFT WHERE APPLICABLE MUST REMAIN WITHIN DIMENSIONS	MATERIAL NO. SEE CHART	DOCUMENT NO. SD-5559-NLP*	SHEET NO. 2 OF 3																					

13		12		11		10		9		8		7		6		5		4		3		2		1																																																							
TOOLED	PART NO	ENG NO		CKT SIZE	MOUNTING OPTION	LOCK OPTION	MATERIAL SEE NOTE I		TOOLED	PART NO	ENG NO		CKT SIZE	MOUNTING OPTION	LOCK OPTION	MATERIAL SEE NOTE I		TOOLED	PART NO	ENG NO		CKT SIZE	MOUNTING OPTION	LOCK OPTION	MATERIAL SEE NOTE I																																																						
J	YES	46999-0655	5559-02P2		2	W/EARS	POSITIVE	94V-2																																																																							
	YES	46999-0656	5559-02P3		2	W/O EAR	POSITIVE	94V-2				NO E.D.P.		4	W/EARS	PASSIVE	94V-2																																																														
	YES	46999-0657	5559-02P2-210		2	W/EARS	POSITIVE	94V-0				NO E.D.P.		4	W/O EAR	PASSIVE	94V-2																																																														
	YES	46999-0658	5559-02P3-210		2	W/O EAR	POSITIVE	94V-0				NO E.D.P.		4	W/EARS	PASSIVE	94V-0																																																														
	O	39-01-4042	5559-04P2		4	W/EARS	POSITIVE	94V-2																																																																							
I	YES	39-01-4046	5559-04P3		4	W/O EAR	POSITIVE	94V-2				YES 50-29-1599		5	W/EARS	PASSIVE	94V-0																																																														
	YES	39-01-4043	5559-04P2-210		4	W/EARS	POSITIVE	94V-0				NO E.D.P.		5	W/O EAR	PASSIVE	94V-0																																																														
	YES	39-01-4047	5559-04P3-210		4	W/O EAR	POSITIVE	94V-0				NO E.D.P.		5	W/O EAR	PASSIVE	94V-0																																																														
	YES	46999-0561	5559-04P3-400		4	W/O EAR	POSITIVE	94V-0				NO E.D.P.		5	W/O EAR	PASSIVE	94V-0																																																														
	YES	39-01-4052	5559-05P2		5	W/EARS	POSITIVE	94V-2				NO E.D.P.		6	W/EARS	PASSIVE	94V-2																																																														
H	YES	39-01-4056	5559-05P3		5	W/O EAR	POSITIVE	94V-2				NO E.D.P.		6	W/O EAR	PASSIVE	94V-2																																																														
	YES	39-01-4053	5559-05P2-210		5	W/EARS	POSITIVE	94V-0				NO E.D.P.		6	W/EARS	PASSIVE	94V-2																																																														
	YES	39-01-4057	5559-05P3-210		5	W/O EAR	POSITIVE	94V-0				NO E.D.P.		6	W/O EAR	PASSIVE	94V-0																																																														
	YES	50-30-4446	5559-05P3-400		5	W/O EAR	POSITIVE	94V-0				NO E.D.P.		7	W/EARS	PASSIVE	94V-2																																																														
	YES	39-01-4062	5559-06P2		6	W/EARS	POSITIVE	94V-2				NO E.D.P.		7	W/O EAR	PASSIVE	94V-2																																																														
	YES	39-01-4066	5559-06P3		6	W/O EAR	POSITIVE	94V-2				NO E.D.P.		7	W/EARS	PASSIVE	94V-0																																																														
G	YES	39-01-4063	5559-06P2-210		6	W/EARS	POSITIVE	94V-0				NO E.D.P.		7	W/O EAR	PASSIVE	94V-0																																																														
	YES	39-01-4067	5559-06P3-210		6	W/O EAR	POSITIVE	94V-0				NO E.D.P.		7	W/O EAR	PASSIVE	94V-0																																																														
	NO	39-01-4072	5559-07P2		7	W/EARS	POSITIVE	94V-2				NO E.D.P.		8	W/EARS	PASSIVE	94V-2																																																														
	NO	39-01-4076	5559-07P3		7	W/O EAR	POSITIVE	94V-2				NO E.D.P.		8	W/O EAR	PASSIVE	94V-0																																																														
	NO	39-01-4073	5559-07P2-210		7	W/EARS	POSITIVE	94V-0				NO E.D.P.		8	W/O EAR	PASSIVE	94V-0																																																														
F	NO	39-01-4077	5559-07P3-210		7	W/O EAR	POSITIVE	94V-0				NO E.D.P.		9	W/EARS	PASSIVE	94V-2																																																														
	NO	39-01-4082	5559-08P2		8	W/EARS	POSITIVE	94V-2				NO E.D.P.		9	W/O EAR	PASSIVE	94V-2																																																														
	NO	39-01-4086	5559-08P3		8	W/O EAR	POSITIVE	94V-2				NO E.D.P.		9	W/O EAR	PASSIVE	94V-0																																																														
	NO	39-01-4083	5559-08P2-210		8	W/EARS	POSITIVE	94V-0				NO E.D.P.		9	W/EARS	PASSIVE	94V-0																																																														
	NO	39-01-4087	5559-08P3-210		8	W/O EAR	POSITIVE	94V-0				NO E.D.P.		10	W/EARS	PASSIVE	94V-2																																																														
E	NO	39-01-4092	5559-09P2		9	W/EARS	POSITIVE	94V-2				NO E.D.P.		10	W/O EAR	PASSIVE	94V-2																																																														
	NO	39-01-4096	5559-09P3		9	W/O EAR	POSITIVE	94V-2				NO E.D.P.		10	W/EARS	PASSIVE	94V-0																																																														
	NO	39-01-4093	5559-09P2-210		9	W/EARS	POSITIVE	94V-0				NO E.D.P.		10	W/O EAR	PASSIVE	94V-0																																																														
	NO	39-01-4097	5559-09P3-210		9	W/O EAR	POSITIVE	94V-0				NO E.D.P.		10	W/O EAR	PASSIVE	94V-0																																																														
	NO	39-01-4102	5559-10P2		10	W/EARS	POSITIVE	94V-2				NO E.D.P.		11	W/EARS	PASSIVE	94V-2																																																														
	NO	39-01-4106	5559-10P3		10	W/O EAR	POSITIVE	94V-2				NO E.D.P.		11	W/O EAR	PASSIVE	94V-0																																																														
D	NO	39-01-4103	5559-10P2-210		10	W/EARS	POSITIVE	94V-0				NO E.D.P.		11	W/O EAR	PASSIVE	94V-0																																																														
	NO	39-01-4107	5559-10P3-210		10	W/O EAR	POSITIVE	94V-0				NO E.D.P.		11	W/O EAR	PASSIVE	94V-0																																																														
	NO	39-01-4112	5559-11P2		11	W/EARS	POSITIVE	94V-2				NO E.D.P.		12	W/EARS	PASSIVE	94V-2																																																														
	NO	39-01-4116	5559-11P3		11	W/O EAR	POSITIVE	94V-2				NO E.D.P.		12	W/O EAR	PASSIVE	94V-2																																																														
	NO	39-01-4113	5559-11P2-210		11	W/EARS	POSITIVE	94V-0				NO E.D.P.		12	W/EARS	PASSIVE	94V-0																																																														
	NO	39-01-4117	5559-11P3-210		11	W/O EAR	POSITIVE	94V-0				NO E.D.P.		12	W/O EAR	PASSIVE	94V-0																																																														
C	NO	39-01-4122	5559-12P2		12	W/EARS	POSITIVE	94V-2				NO E.D.P.		12	W/EARS	PASSIVE	94V-2																																																														
	NO	39-01-4126	5559-12P3		12	W/O EAR	POSITIVE	94V-2				NO E.D.P.		12	W/O EAR	PASSIVE	94V-2																																																														
	NO	39-01-4123	5559-12P2-210		12	W/EARS	POSITIVE	94V-0				NO E.D.P.		12	W/EARS	PASSIVE	94V-0																																																														
	NO	39-01-4127	5559-12P3-210		12	W/O EAR	POSITIVE	94V-0				NO E.D.P.		12	W/O EAR	PASSIVE	94V-0																																																														
B	<p>*O* = OBSOLETE</p> <p>LEGEND</p> <p>BASE NO ——— 5559-*** P * - * ——— MATERIAL OPTION: SEE NOTE I</p> <p>CIRCUIT SIZE (04-12) ——— MOUNTING AND LOCK OPTION: 2=WITH EARS, POSITIVE LOCK 3=WITHOUT EARS, POSITIVE LOCK 4=WITH EARS, PASSIVE LOCK 5=WITHOUT EARS, PASSIVE LOCK</p> <p>PLUG ———</p>																																																																														
A	<table border="1"> <tr> <td rowspan="4"> SEE SHEET 1 EC NO: UCP2015-1291 DRAWING: NGUYEN 2014/11/12 CHKD: BELL 2014/11/12 APPR: FSM/TH 2015/02/09 REV: J9 </td> <td>QUALITY SYMBOLS</td> <td>GENERAL TOLERANCES (UNLESS SPECIFIED)</td> <td>DIMENSION STYLE</td> <td>SCALE</td> <td>DESIGN UNITS</td> <td>THIRD ANGLE PROJECTION</td> </tr> <tr> <td>▽=0</td> <td>mm INCH</td> <td>IN/MM</td> <td>1:1</td> <td>METRIC</td> <td>☉</td> </tr> <tr> <td>▽=0</td> <td>4 PLACES ± --- ± ---</td> <td>DRAWN BY DATE</td> <td rowspan="2">TITLE</td> <td colspan="2" rowspan="2">MINI-FIT JR. SERIES PLUG (SINGLE ROW)</td> </tr> <tr> <td>▽=0</td> <td>3 PLACES ± --- ±.010</td> <td>KSS 2/19/89</td> </tr> <tr> <td></td> <td>2 PLACES ±0.25 ±.015</td> <td>CHECKED BY DATE</td> <td colspan="2" rowspan="2">DOCUMENT NO.</td> <td colspan="2" rowspan="2">SHEET NO.</td> </tr> <tr> <td></td> <td>1 PLACE ±0.38 ± ---</td> <td>RJF 2/19/89</td> </tr> <tr> <td></td> <td>0 PLACE ± ±</td> <td>APPROVED BY DATE</td> <td colspan="2" rowspan="2">SD-5559-NLP*</td> <td colspan="2" rowspan="2">3 OF 3</td> </tr> <tr> <td></td> <td></td> <td>FSM/TH 2011/03/10</td> </tr> <tr> <td></td> <td></td> <td>ANGULAR ±1/2°</td> <td colspan="2">SEE CHART</td> <td colspan="2"></td> </tr> <tr> <td></td> <td></td> <td>DRAFT WHERE APPLICABLE MUST REMAIN WITHIN DIMENSIONS</td> <td colspan="4">THIS DRAWING CONTAINS INFORMATION THAT IS PROPRIETARY TO MOLEX INCORPORATED AND SHOULD NOT BE USED WITHOUT WRITTEN PERMISSION</td> </tr> </table>																							SEE SHEET 1 EC NO: UCP2015-1291 DRAWING: NGUYEN 2014/11/12 CHKD: BELL 2014/11/12 APPR: FSM/TH 2015/02/09 REV: J9	QUALITY SYMBOLS	GENERAL TOLERANCES (UNLESS SPECIFIED)	DIMENSION STYLE	SCALE	DESIGN UNITS	THIRD ANGLE PROJECTION	▽=0	mm INCH	IN/MM	1:1	METRIC	☉	▽=0	4 PLACES ± --- ± ---	DRAWN BY DATE	TITLE	MINI-FIT JR. SERIES PLUG (SINGLE ROW)		▽=0	3 PLACES ± --- ±.010	KSS 2/19/89		2 PLACES ±0.25 ±.015	CHECKED BY DATE	DOCUMENT NO.		SHEET NO.			1 PLACE ±0.38 ± ---	RJF 2/19/89		0 PLACE ± ±	APPROVED BY DATE	SD-5559-NLP*		3 OF 3				FSM/TH 2011/03/10			ANGULAR ±1/2°	SEE CHART						DRAFT WHERE APPLICABLE MUST REMAIN WITHIN DIMENSIONS	THIS DRAWING CONTAINS INFORMATION THAT IS PROPRIETARY TO MOLEX INCORPORATED AND SHOULD NOT BE USED WITHOUT WRITTEN PERMISSION			
SEE SHEET 1 EC NO: UCP2015-1291 DRAWING: NGUYEN 2014/11/12 CHKD: BELL 2014/11/12 APPR: FSM/TH 2015/02/09 REV: J9	QUALITY SYMBOLS	GENERAL TOLERANCES (UNLESS SPECIFIED)	DIMENSION STYLE	SCALE	DESIGN UNITS	THIRD ANGLE PROJECTION																																																																									
	▽=0	mm INCH	IN/MM	1:1	METRIC	☉																																																																									
	▽=0	4 PLACES ± --- ± ---	DRAWN BY DATE	TITLE	MINI-FIT JR. SERIES PLUG (SINGLE ROW)																																																																										
	▽=0	3 PLACES ± --- ±.010	KSS 2/19/89																																																																												
	2 PLACES ±0.25 ±.015	CHECKED BY DATE	DOCUMENT NO.		SHEET NO.																																																																										
	1 PLACE ±0.38 ± ---	RJF 2/19/89																																																																													
	0 PLACE ± ±	APPROVED BY DATE	SD-5559-NLP*		3 OF 3																																																																										
		FSM/TH 2011/03/10																																																																													
		ANGULAR ±1/2°	SEE CHART																																																																												
		DRAFT WHERE APPLICABLE MUST REMAIN WITHIN DIMENSIONS	THIS DRAWING CONTAINS INFORMATION THAT IS PROPRIETARY TO MOLEX INCORPORATED AND SHOULD NOT BE USED WITHOUT WRITTEN PERMISSION																																																																												