



Chipsmall Limited consists of a professional team with an average of over 10 year of expertise in the distribution of electronic components. Based in Hongkong, we have already established firm and mutual-benefit business relationships with customers from,Europe,America and south Asia,supplying obsolete and hard-to-find components to meet their specific needs.

With the principle of “Quality Parts,Customers Priority,Honest Operation,and Considerate Service”,our business mainly focus on the distribution of electronic components. Line cards we deal with include Microchip,ALPS,ROHM,Xilinx,Pulse,ON,Everlight and Freescale. Main products comprise IC,Modules,Potentiometer,IC Socket,Relay,Connector.Our parts cover such applications as commercial,industrial, and automotives areas.

We are looking forward to setting up business relationship with you and hope to provide you with the best service and solution. Let us make a better world for our industry!



## Contact us

Tel: +86-755-8981 8866 Fax: +86-755-8427 6832

Email & Skype: info@chipsmall.com Web: www.chipsmall.com

Address: A1208, Overseas Decoration Building, #122 Zhenhua RD., Futian, Shenzhen, China



PB 1011 Test Jack, PCB Mounting, Ø 2 mm, 10 A



### Approvals and Compliances

#### Description

- PCB Mounting
- Test Jack , diameter 2.0 mm
- measuring and testing during operation
- Continuous electrical connection
- Resilient contacts, gold plated

#### Weblinks

[pdf datasheet](#), [html-datasheet](#), [General Product Information](#), [Distributor-Stock-Check](#), [Accessories](#), [Detailed request for product](#)

#### Technical Data

|                                 |  |
|---------------------------------|--|
| Diameter                        | 2mm  |
| Rated current                   | 10A  |
| Admissible switching power      | 220 W / max. 5 A or 75 VDC<br>440 W / max. 5 A or 50 VAC |
| Contact resistance              | < 7 mΩ at 20 mV  |
| Allowable Operation Temperature | -25 °C to 70 °C  |


|                              |  |
|------------------------------|--|
| Solderability                | 235 °C / 2 sec acc. to IEC 60068-2-20 , Test Ta, method 1  |
| Resistance to Soldering Heat | 260 °C / 5 sec acc. to IEC 60068-2-20 , Test Tb, method 1A |
| Weight                       | 0.5g   |
| Material: Housing            | Thermoplastic (PC), UL 94V-2                               |
| Surface of contacts          | gold plated , Thickness 0.5 μm                             |

### Approvals and Compliances

Detailed information on product approvals, code requirements, usage instructions and detailed test conditions can be looked up in [Details about Approvals](#)




#### Application standards

Application standards where the product can be used

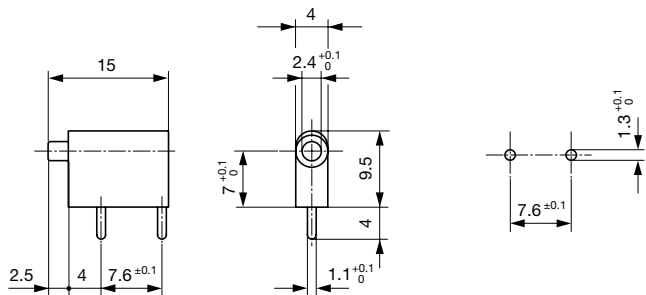
| Organization  | Design                         | Standard     | Description   |
|---|--------------------------------|--------------|---|
|  | Designed for applications acc. | IEC/UL 60950 | IEC 60950-1 includes the basic requirements for the safety of information technology equipment. |

#### Compliances

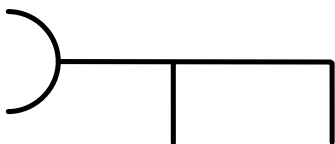
The product complies with following Guide Lines

| Identification  | Details    | Initiator   | Description   |
|---|------------|-------------|---|
|  | RoHS       | SCHURTER AG | EU Directive RoHS 2011/65/EU  |
|  | China RoHS | SCHURTER AG | The law SJ / T 11363-2006 (China RoHS) has been in force since 1 March 2007. It is similar to the EU directive RoHS.  |
|  | REACH      | SCHURTER AG | On 1 June 2007, Regulation (EC) No 1907/2006 on the Registration, Evaluation, Authorization and Restriction of Chemicals 1 (abbreviated as "REACH") entered into force. |

## Dimensions [mm]



## Diagrams



## All Variants

| Product group | Color | Order Number |
|---------------|-------|--------------|
| Test Jack     | black | 0040.1011    |
| Test Jack     | red   | 0040.1012    |
| Test Jack     | blue  | 0040.1014    |

Most Popular.

Availability for all products can be searched real-time: <https://www.schurter.com/en/Stock-Check/Stock-Check-SCHURTER>

**Packaging unit** 100 Pcs

## Mating Inlets/Plugs

Category / Description



Test Jacks & Probes Overview complete

PS 1061 Test Probe, Ø 2 mm, 10 A

PS 1061

Test Jacks & Probes further types to PB 1011