



Chipsmall Limited consists of a professional team with an average of over 10 year of expertise in the distribution of electronic components. Based in Hongkong, we have already established firm and mutual-benefit business relationships with customers from,Europe,America and south Asia,supplying obsolete and hard-to-find components to meet their specific needs.

With the principle of “Quality Parts,Customers Priority,Honest Operation,and Considerate Service”,our business mainly focus on the distribution of electronic components. Line cards we deal with include Microchip,ALPS,ROHM,Xilinx,Pulse,ON,Everlight and Freescale. Main products comprise IC,Modules,Potentiometer,IC Socket,Relay,Connector.Our parts cover such applications as commercial,industrial, and automotives areas.

We are looking forward to setting up business relationship with you and hope to provide you with the best service and solution. Let us make a better world for our industry!



Contact us

Tel: +86-755-8981 8866 Fax: +86-755-8427 6832

Email & Skype: info@chipsmall.com Web: www.chipsmall.com

Address: A1208, Overseas Decoration Building, #122 Zhenhua RD., Futian, Shenzhen, China



PS 1061 Test Probe, Ø 2 mm, 10 A



Description

- Test Probe
- diameter 2.0 mm

Weblinks

[pdf datasheet](#), [html-datasheet](#), [General Product Information](#), [RoHS](#), [CHINA-RoHS](#), [REACH](#), [Distributor-Stock-Check](#), [Accessories](#), [Detailed request for product](#)

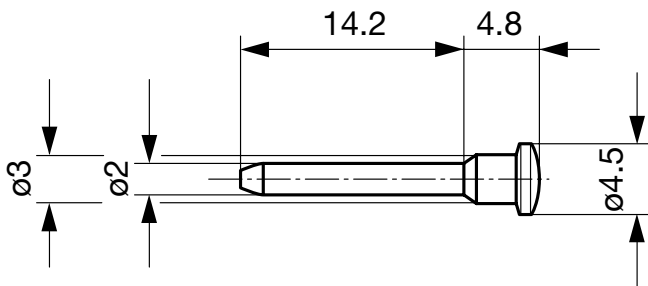
Technical Data

Diameter	2 mm
Rated current	10 A
Allowable Operation Temperature	-25 °C to 70 °C

Resistance to Soldering Heat	260 °C / 5 sec acc. to IEC 60068-2-20 , Test Tb, method 1A
Weight	0.5 g
Material: Housing	Thermoplastic (PC), UL 94V-2
Surface of contacts	gold plated , Thickness 1.0 µm

Detailed information on product approvals, code requirements, usage instructions and detailed test conditions can be looked up in [General Product Information](#)

Dimensions



All Variants

Product group	Color	Order Number
Test Probe	red	0040.1062

Most Popular.

Availability for all products can be searched real-time: <http://www.schurter.com/en/Stock-Check/Stock-Check-SCHURTER>

Packaging unit 100 Pcs

Mating Outlets/Connectors

Category / Description



[Test Jacks & Probes Overview complete](#)

PB 1011 Test Jack, PCB Mounting, Ø 2 mm, 10 A	PB 1011
PB 1021 Test Jack, PCB Mounting, Ø 2 mm, 6.3 A	PB 1021
PB 1101 Test Jack, PCB Mounting, Ø 2 mm, 10 A	PB 1101
PB 1111 Test Jack, PCB Mounting, Ø 2 mm, 10 A	PB 1111
PB 1151 Test Jack, PCB Mounting, Ø 2 mm, 6.3 A	PB 1151
Test Jacks & Probes further types to PS 1061	...