



Chipsmall Limited consists of a professional team with an average of over 10 year of expertise in the distribution of electronic components. Based in Hongkong, we have already established firm and mutual-benefit business relationships with customers from,Europe,America and south Asia,supplying obsolete and hard-to-find components to meet their specific needs.

With the principle of “Quality Parts,Customers Priority,Honest Operation,and Considerate Service”,our business mainly focus on the distribution of electronic components. Line cards we deal with include Microchip,ALPS,ROHM,Xilinx,Pulse,ON,Everlight and Freescale. Main products comprise IC,Modules,Potentiometer,IC Socket,Relay,Connector.Our parts cover such applications as commercial,industrial, and automotives areas.

We are looking forward to setting up business relationship with you and hope to provide you with the best service and solution. Let us make a better world for our industry!



Contact us

Tel: +86-755-8981 8866 Fax: +86-755-8427 6832

Email & Skype: info@chipsmall.com Web: www.chipsmall.com

Address: A1208, Overseas Decoration Building, #122 Zhenhua RD., Futian, Shenzhen, China



PBD 1211 Test Jack, PCB Mounting, Ø 2 mm, 6.3 A, flux-proof



Description

- PCB Mounting
- Test Jack , diameter 2.0 mm
- measuring and testing during operation
- Open, close with test probe
- Resilient contacts, gold plated
- Flux-proof

Weblinks

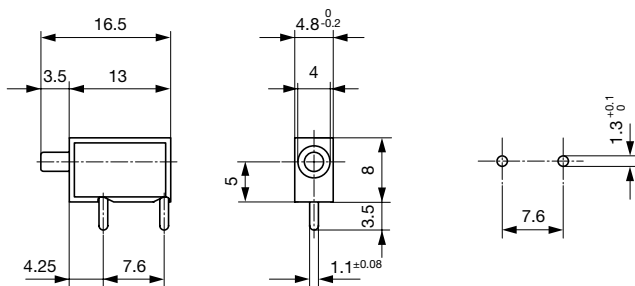
[pdf datasheet](#), [html-datasheet](#), [General Product Information](#), [RoHS](#), [CHINA-RoHS](#), [REACH](#), [Distributor-Stock-Check](#), [Accessories](#), [Detailed request for product](#)

Technical Data

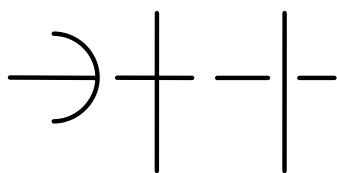
Diameter	2 mm	Resistance to Vibration	acc. to IEC 60068-2-6, test Fc
Rated current	6.3 A	Solderability	235 °C / 2 sec acc. to IEC 60068-2-20 , Test Ta, method 1
Admissible switching power	@ 250 Insertions: 150 W / max. 2 A or 75 VDC 300 W / max. 3 A or 50 VAC	Resistance to Soldering Heat	260 °C / 5 sec acc. to IEC 60068-2-20 , Test Tb, method 1A
	@ 1000 Insertions: 100 W / max. 1 A or 75 VDC 150 W / max. 2 A or 50 VAC	Weight	0.6g
Contact resistance	< 10mΩ at 20 mV	Material: Housing	Thermoplastic (PC), UL 94V-2
Insulation Resistance	> 5 MΩ (500VDC; 1 min)	Surface of contacts	gold plated , Thickness 2.5 μm
Dielectric strength	> 2 kV (50Hz; 1 min)		
Clearance and Creepage Distance	> 2 mm		
Allowable Operation Temperature	-25 °C to 70 °C		

Detailed information on product approvals, code requirements, usage instructions and detailed test conditions can be looked up in [General Product Information](#)

Dimensions



Diagrams



All Variants

Product group	Color	Order Number
Test Jack	black	0040.1211
Test Jack	red	0040.1212

Most Popular.

Availability for all products can be searched real-time: <http://www.schurter.com/en/Stock-Check/Stock-Check-SCHURTER>

Packaging unit

100 Pcs

Mating Inlets/Plugs

Category / Description



[Test Jacks & Probes Overview complete](#)

PS 1061 Test Probe, Ø 2 mm, 10 A

PS 1061

[Test Jacks & Probes further types to PBD 1211](#)