



Chipsmall Limited consists of a professional team with an average of over 10 year of expertise in the distribution of electronic components. Based in Hongkong, we have already established firm and mutual-benefit business relationships with customers from,Europe,America and south Asia,supplying obsolete and hard-to-find components to meet their specific needs.

With the principle of "Quality Parts,Customers Priority,Honest Operation,and Considerate Service",our business mainly focus on the distribution of electronic components. Line cards we deal with include Microchip,ALPS,ROHM,Xilinx,Pulse,ON,Everlight and Freescale. Main products comprise IC,Modules,Potentiometer,IC Socket,Relay,Connector.Our parts cover such applications as commercial,industrial, and automotives areas.

We are looking forward to setting up business relationship with you and hope to provide you with the best service and solution. Let us make a better world for our industry!



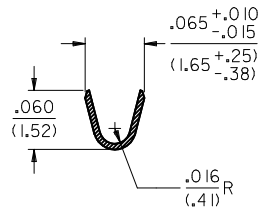
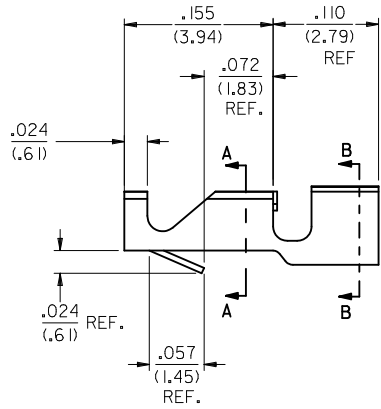
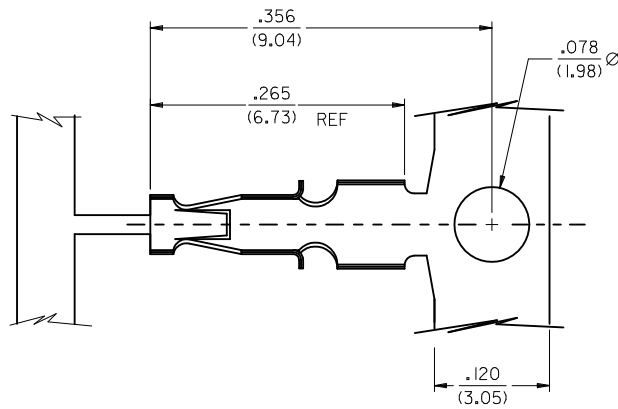
Contact us

Tel: +86-755-8981 8866 Fax: +86-755-8427 6832

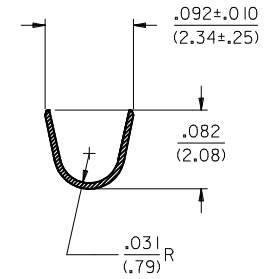
Email & Skype: info@chipsmall.com Web: www.chipsmall.com

Address: A1208, Overseas Decoration Building, #122 Zhenhua RD., Futian, Shenzhen, China





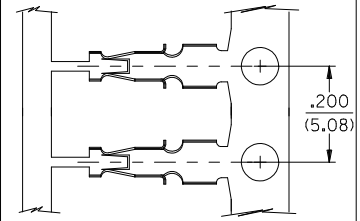
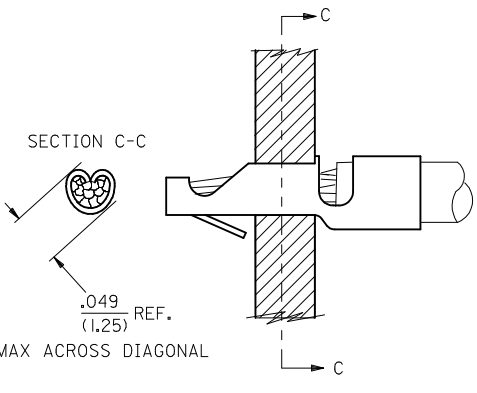
SECTION A-A



SECTION B-B

NOTES:

1. MATERIAL: (.015±.01)/.006±.0004 BRASS ALLOY 260
 2. TERMINALS CONFORM TO SOLERABILITY SPEC I52
 3. TERMINAL FOR USE WITH 22-26 AWG STRANDED WIRE OR 22 AWG SOLID WIRE. INSULATION DIA (1.52)/.060 MAX
 4. WIND PER ES-339-B
 5. PLATING PER SDES-88 (909) * OVERALL HOT TIN DIP: .00254 MICROMETERS MIN.
 6. RECOMMENDED PC BOARD HOLE SIZE: (1.29±.05) / .051±.002 DIA.
 7. RECOMMENDED PC BOARD THICKNESS: (1.57±.20) / .062±.008
 8. PRODUCT SPECIFICATION: PS-4706-001
 9. ENG. NO. 42001-0004 AVAILABLE IN MOLEX BRAZIL ONLY.
- *THE PRIMARY SHIPPING CARTON WILL BE LABELED "COMPLIANT TO RoHS DIRECTIVE 2002/95/EC AND ELV ANNEX II OF DIRECTIVE 2000/53/EC." CARTONS WITHOUT THIS LABEL MAY CONTAIN PRODUCT WITH TIN-LEAD PLATING.



EDP NO.	ENG NO.	PLT
040-08-0605	42001-0001	P909
040-02-0601	42001-0002	I22
040-01-0610	42001-0003	999
040-08-0606	42001-0004	P224

SEE NOTE 9

CHANGE TO ME10 EC NO: UCP2005-0966 DRWN:ADRATNOL 2004/11/19 CHKD:SAMIEC 2008/04/08/89 APPR:MMARGULIS 2008/04/11/084	QUALITY SYMBOLS ▽=0 ▽=0	GENERAL TOLERANCES (UNLESS SPECIFIED) <table border="1"> <thead> <tr> <th></th> <th>mm</th> <th>INCH</th> </tr> </thead> <tbody> <tr> <td>4 PLACES</td> <td>± .005</td> <td>± .0005</td> </tr> <tr> <td>3 PLACES</td> <td>± .010</td> <td>± .0010</td> </tr> <tr> <td>2 PLACES</td> <td>± 0.38</td> <td>± .015</td> </tr> <tr> <td>1 PLACE</td> <td>± .005</td> <td>± .0005</td> </tr> </tbody> </table>		mm	INCH	4 PLACES	± .005	± .0005	3 PLACES	± .010	± .0010	2 PLACES	± 0.38	± .015	1 PLACE	± .005	± .0005	DIMENSION STYLE IN/MM	SCALE --- INCH	DESIGN UNITS INCH	THIRD ANGLE PROJECTION
		mm	INCH																		
	4 PLACES	± .005	± .0005																		
	3 PLACES	± .010	± .0010																		
2 PLACES	± 0.38	± .015																			
1 PLACE	± .005	± .0005																			
DRAFT WHERE APPLICABLE MUST REMAIN WITHIN DIMENSIONS		MATERIAL NO. SEE CHART	DRAWN BY KSAMIEC	DATE 09/09/94	TITLE TERMINAL STRAIN RELIEF (5.08)/2.00 CENTERS																
REV H1		SIZE C	APPROVED BY BLENZ		DATE 09/09/94	MOLEX INCORPORATED															
		DOCUMENT NO. SD-42001		SHEET NO. 1 OF 1		THIS DRAWING CONTAINS INFORMATION THAT IS PROPRIETARY TO MOLEX INCORPORATED AND SHOULD NOT BE USED WITHOUT WRITTEN PERMISSION															