



Chipsmall Limited consists of a professional team with an average of over 10 year of expertise in the distribution of electronic components. Based in Hongkong, we have already established firm and mutual-benefit business relationships with customers from,Europe,America and south Asia,supplying obsolete and hard-to-find components to meet their specific needs.

With the principle of “Quality Parts,Customers Priority,Honest Operation,and Considerate Service”,our business mainly focus on the distribution of electronic components. Line cards we deal with include Microchip,ALPS,ROHM,Xilinx,Pulse,ON,Everlight and Freescale. Main products comprise IC,Modules,Potentiometer,IC Socket,Relay,Connector.Our parts cover such applications as commercial,industrial, and automotives areas.

We are looking forward to setting up business relationship with you and hope to provide you with the best service and solution. Let us make a better world for our industry!



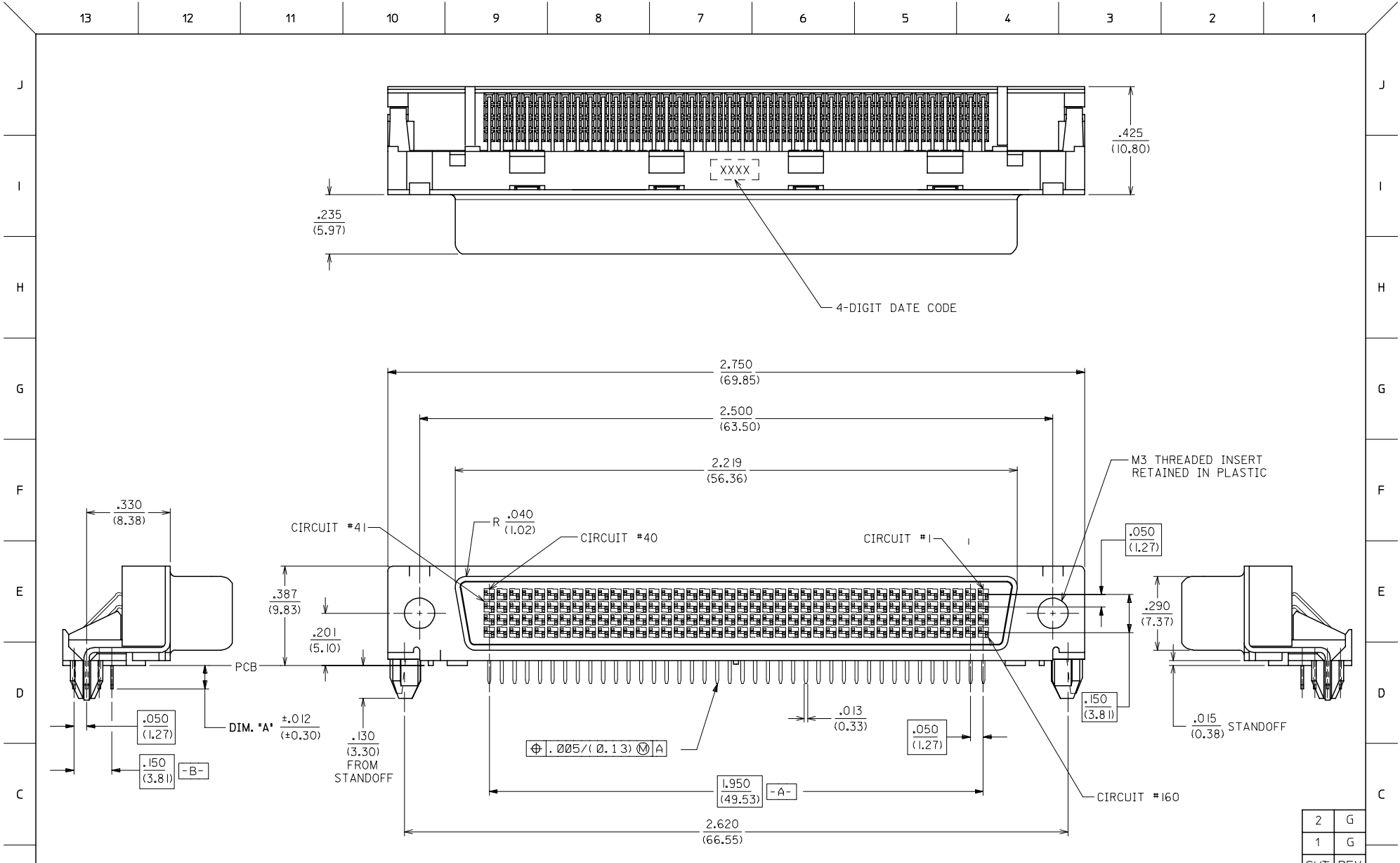
## Contact us

Tel: +86-755-8981 8866 Fax: +86-755-8427 6832

Email & Skype: info@chipsmall.com Web: www.chipsmall.com

Address: A1208, Overseas Decoration Building, #122 Zhenhua RD., Futian, Shenzhen, China





|     |     |
|-----|-----|
| 2   | G   |
| 1   | G   |
| SHT | REV |

| <b>ADD COSMETIC NOTE</b><br>FC NO: UCP2006-3051<br>2006/07/10<br>DRAWN BY: BARRA<br>2006/07/10<br>CHKD: BORGAN<br>2006/07/10<br>APPR: SMILLER<br>2006/07/11 | QUALITY SYMBOLS<br>▽=0<br>▽=0 | GENERAL TOLERANCES (UNLESS SPECIFIED)<br><table border="1"> <tr> <th></th> <th>mm</th> <th>INCH</th> </tr> <tr> <td>4 PLACES</td> <td>± .005</td> <td>± .0005</td> </tr> <tr> <td>3 PLACES</td> <td>± .010</td> <td>± .0010</td> </tr> <tr> <td>2 PLACES</td> <td>± 0.13</td> <td>± .01</td> </tr> <tr> <td>1 PLACE</td> <td>± 0.25</td> <td>± .01</td> </tr> </table> |         | mm                             | INCH | 4 PLACES   | ± .005 | ± .0005 | 3 PLACES | ± .010 | ± .0010 | 2 PLACES | ± 0.13 | ± .01 | 1 PLACE | ± 0.25 | ± .01 | DIMENSION STYLE<br>IN/MM | SCALE<br>4:1 | DESIGN UNITS<br>INCH | THIRD ANGLE PROJECTION |
|---|-------------------------------|--|---------|--------------------------------|------|--|--------|---------|----------|--------|---------|----------|--------|-------|---------|--------|-------|--------------------------|--------------|----------------------|------------------------|
|   |                               | mm   | INCH    |                                |      |  |        |         |          |        |         |          |        |       |         |        |       |                          |              |                      |                        |
|   | 4 PLACES                      | ± .005   | ± .0005 |                                |      |  |        |         |          |        |         |          |        |       |         |        |       |                          |              |                      |                        |
|   | 3 PLACES                      | ± .010   | ± .0010 |                                |      |  |        |         |          |        |         |          |        |       |         |        |       |                          |              |                      |                        |
| 2 PLACES  | ± 0.13                        | ± .01  |         |                                |      |  |        |         |          |        |         |          |        |       |         |        |       |                          |              |                      |                        |
| 1 PLACE   | ± 0.25                        | ± .01  |         |                                |      |  |        |         |          |        |         |          |        |       |         |        |       |                          |              |                      |                        |
| DRAWN BY: SCHMIDGALL<br>DATE: 1993/07/20<br>CHECKED BY: MOS<br>DATE: 1993/07/20<br>APPROVED BY: BIXLER<br>DATE: 1993/07/20                                  |                               | TITLE<br>.050 PITCH LFH 160 CKT<br>RIGHT ANGLE I/O FEMALE<br>SALES ASSEMBLY  |         | MATERIAL NO.<br>SDA-71626-200* |      | SHEET NO.<br>1 OF 2  |        |         |          |        |         |          |        |       |         |        |       |                          |              |                      |                        |
| DRAFT WHERE APPLICABLE<br>MUST REMAIN<br>WITHIN DIMENSIONS  |                               | SEE TABLE  |         | MOLEX INCORPORATED             |      | THIS DRAWING CONTAINS INFORMATION THAT IS PROPRIETARY TO MOLEX<br>INCORPORATED AND SHOULD NOT BE USED WITHOUT WRITTEN PERMISSION |        |         |          |        |         |          |        |       |         |        |       |                          |              |                      |                        |

| PART NUMBER | ENG. NUMBER | DIM. *A* |
|-------------|-------------|----------|
| 051-24-1040 | 71626-2000  | .092     |
| 051-24-1041 | 71626-2001  | .079     |
| 71626-2002  | 71626-2002  | .125     |

NOTES:

1) MATERIALS:

HOUSING: GLASS FILLED LCP (LIQUID CRYSTAL POLYMER),  
UL 94V-0, COLOR: BLACK.  
TAIL ALIGNER: GLASS FILLED LCP (LIQUID CRYSTAL POLYMER),  
UL 94V-0, COLOR: BLACK.  
MOLDED STICK: LCP 30% GLASS FILLED, 94V-0, BLACK.  
FEMALE CONTACT: BERYLLIUM COPPER .0100±.0005 THICK.  
OUTER SHELL: LOW CARBON STEEL.  
THREADED INSERT: BRASS.

2) PLATING :

TERMINAL: .000030/(0.00076) MINIMUM GOLD IN SELECTIVE AREA;  
.000100/(0.00254) MINIMUM TIN IN SELECTIVE AREA;  
OVER NICKEL UNDERPLATE OVERALL.

OUTER SHELL: .000150/(0.00381) MINIMUM TIN OVER  
.000050/(0.00127) MINIMUM NICKEL OVER  
COPPER FLASH (OPTIONAL).

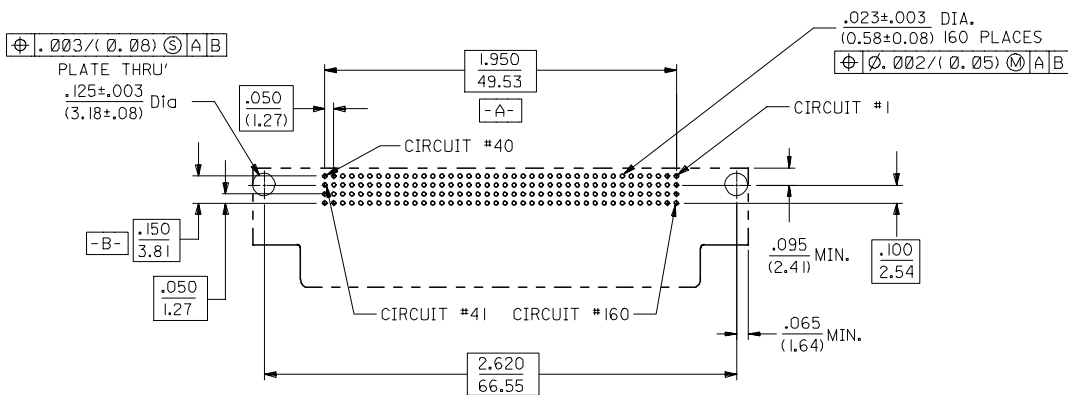
3) THIS PART CONFORMS TO MOLEX PRODUCT SPECIFICATION PS-71626.

4) PACKAGING SPECIFICATION PK-70873-0229 APPLIES.

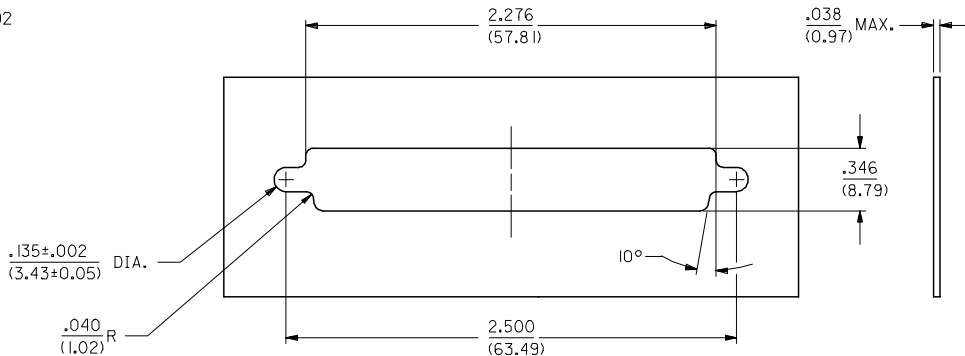
5) PART COMPLIES WITH CLASS B OF COSMETIC SPECIFICATION PS-45499-002

NOTE FOR LEAD FREE CONVERSION:

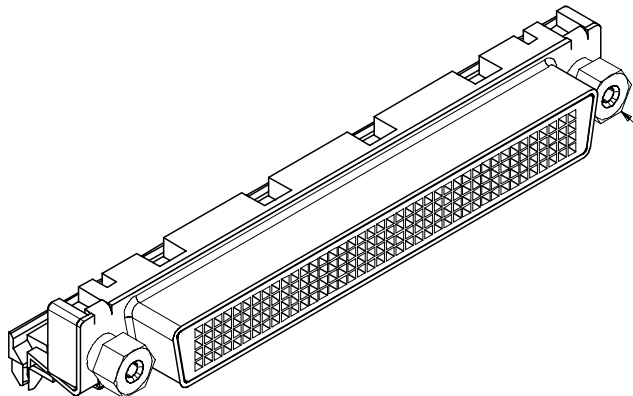
THE PRIMARY SHIPPING CARTON WILL BE  
LABELED 'COMPLIANT TO RoHS DIRECTIVE  
2002/95/EC AND ELV ANNEX II OF  
DIRECTIVE 2000/53/EC'. CARTONS  
WITHOUT THIS LABEL MAY CONTAIN  
PRODUCT WITH LEAD.



RECOMMENDED PC BOARD LAYOUT  
COMPONENT SIDE



PANEL CUT-OUT DIMENSIONS  
ALL TOLERANCES ±.003/(0.08)  
UNLESS OTHERWISE STATED.



FOR OPTIONAL HARDWARE DETAILS  
SEE SDA-71629-\*\*\*\*\*

|   |             |                          |  |                 |            |   |                                |   |
|---|-------------|--------------------------|--|-----------------|------------|---|--------------------------------|---|
| ADD NOTE 5<br>FC NO: UCP2006-3051<br>G DRAWN BY: BARRA 2006/07/10<br>CHKD: MORGAN 2006/07/10<br>APPR: MILLER 2006/07/11 | DESCRIPTION | QUALITY SYMBOLS          | GENERAL TOLERANCES (UNLESS SPECIFIED)                | DIMENSION STYLE |            | SCALE 2:1   | DESIGN UNITS INCH              | THIRD ANGLE PROJECTION  |
|   |             | $\nabla=0$<br>$\nabla=0$ |  | mm              | INCH       |   |                                |   |
|   |             |                          | 4 PLACES ± --- ± ---                                 | DRAWN BY        | DATE       | TITLE<br>.050 PITCH LFH 160 CKT<br>RIGHT ANGLE I/O FEMALE<br>SALES ASSEMBLY | MATERIAL NO.<br>SDA-71626-200* | SHEET NO.<br>2 OF 2   |
|   |             |                          | 3 PLACES ± --- ± .010                                | SCHMIDGALL      | 1993/07/20 |   |                                |   |
|   |             |                          | 2 PLACES ± 0.25 ± ---                                | CHECKED BY      | DATE       | MOLEX INCORPORATED  | DOCUMENT NO.                   | THIS DRAWING CONTAINS INFORMATION THAT IS PROPRIETARY TO MOLEX INCORPORATED AND SHOULD NOT BE USED WITHOUT WRITTEN PERMISSION |
|   |             |                          | 1 PLACE ± --- ± ---                                  | MOS             | 1993/07/20 |   |                                |   |
|   |             |                          | ANGULAR ±1/2°  | APPROVED BY     | DATE       |   |                                |   |
|   |             |                          | DRAFT WHERE APPLICABLE MUST REMAIN WITHIN DIMENSIONS | BIXLER          | 1993/07/20 |   |                                |   |