



Chipsmall Limited consists of a professional team with an average of over 10 year of expertise in the distribution of electronic components. Based in Hongkong, we have already established firm and mutual-benefit business relationships with customers from,Europe,America and south Asia,supplying obsolete and hard-to-find components to meet their specific needs.

With the principle of “Quality Parts,Customers Priority,Honest Operation,and Considerate Service”,our business mainly focus on the distribution of electronic components. Line cards we deal with include Microchip,ALPS,ROHM,Xilinx,Pulse,ON,Everlight and Freescale. Main products comprise IC,Modules,Potentiometer,IC Socket,Relay,Connector.Our parts cover such applications as commercial,industrial, and automotives areas.

We are looking forward to setting up business relationship with you and hope to provide you with the best service and solution. Let us make a better world for our industry!



## Contact us

Tel: +86-755-8981 8866 Fax: +86-755-8427 6832

Email & Skype: info@chipsmall.com Web: www.chipsmall.com

Address: A1208, Overseas Decoration Building, #122 Zhenhua RD., Futian, Shenzhen, China



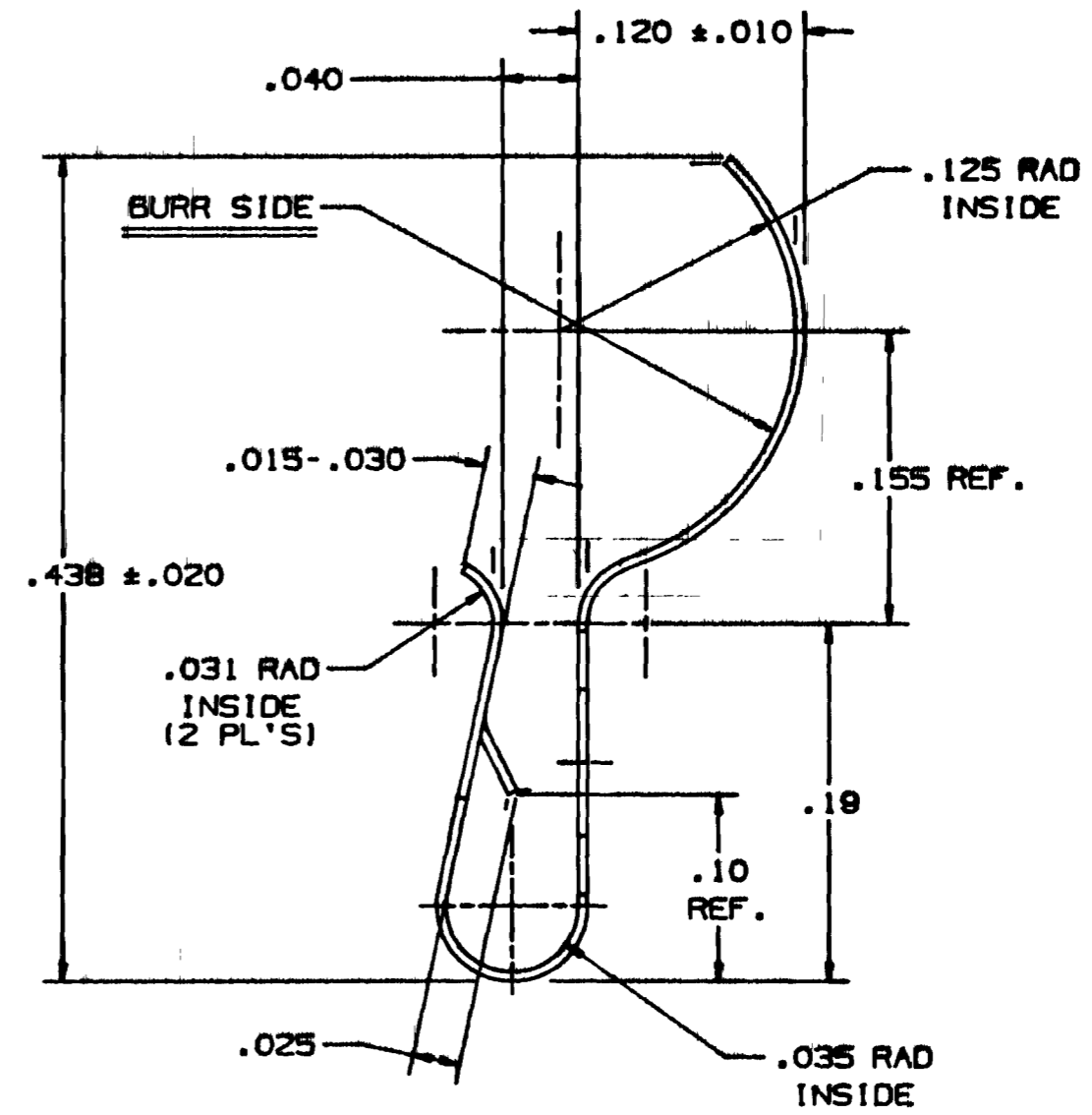
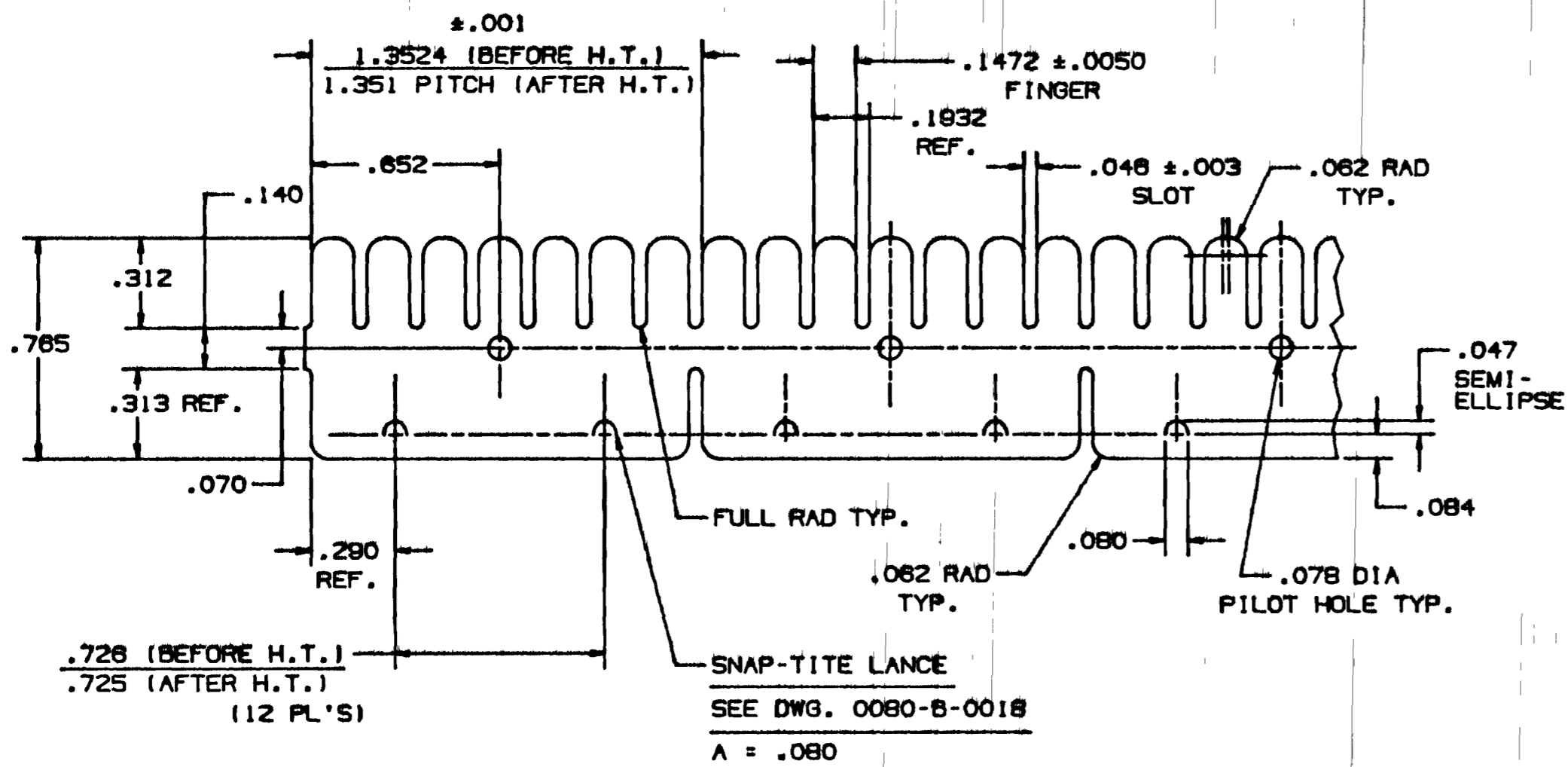
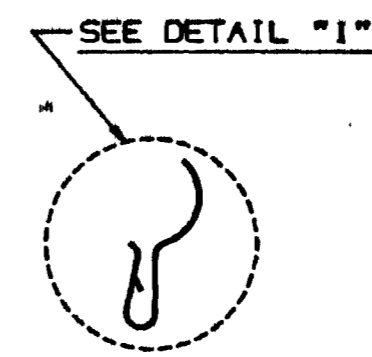
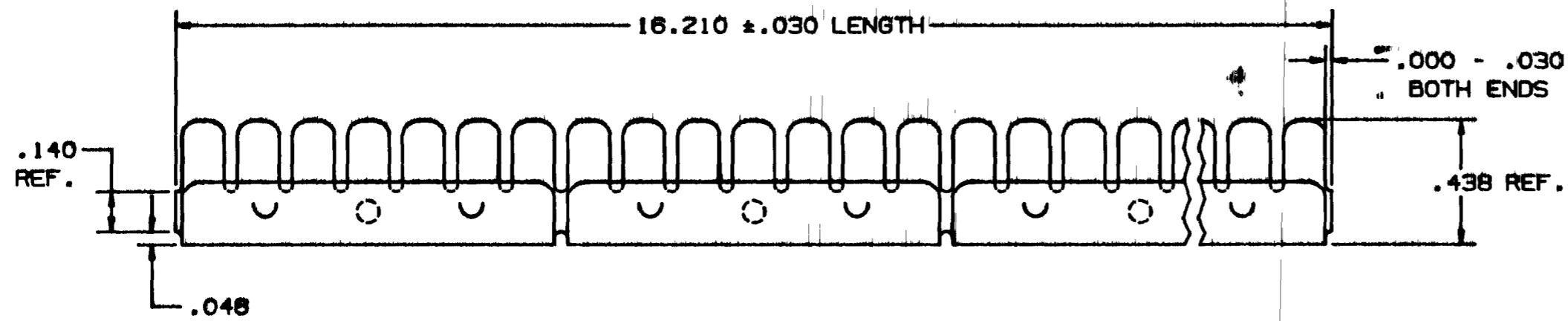
1. 97-621.1 PROG. DIE-CUT TO LENGTH  
 (16.210 IN. LONG) (12 STROKES)  
 2. DEGREASE

3. H.T.  
 4. INSP.  
 5. STOCK

6. FINISH AS REQ'D  
 7. FINAL INSP.  
 8. SHIPPING

16 IB<sub>2</sub>ENT<sub>2</sub>LLIHHIPPIXW

DWG. NO.  
 0097-C-0622



DETAIL "1"  
 SCALE = 10:1

PARTIAL FLAT BLANK

SCALE = 2 : 1

DWG. NO.  
 0097-C-0622

MATERIAL: .0003 .005 BE. CU. - ALLOY 25 - 1/2 HARD - END. GRADE	.003 • .858 22.7	TOLERANCES NOT SHOWN DECIMAL 2 PL'S ± .020 DECIMAL 3 PL'S ± .010	DRAWN BY M.V. 12-23-87
HEAT TREAT: TO DPH 343 MIN. USING A 500 GRAM LOAD		FRACTIONAL : ANGULAR : BEND RADII ± .010	INSTRUMENT SPECIALTIES COMPANY INC.
THICKNESS AFTER CLEANING .0045 MIN.		CORNER RADII ± .005 MAXIMUM BURR	CHECKED BY WHS. 12-23-87
FINISH: AS REQUIRED	NO. FT./IN 154.0	PRODUCTION REVISED SETTINGS SCALE 2 : 1	APPROVED BY DATE WHS. 12-23-87
		REF. DWG. NO. 0711-C-0061	
		DWG. NO. 0097-C-0622	01