



Chipsmall Limited consists of a professional team with an average of over 10 year of expertise in the distribution of electronic components. Based in Hongkong, we have already established firm and mutual-benefit business relationships with customers from,Europe,America and south Asia,supplying obsolete and hard-to-find components to meet their specific needs.

With the principle of “Quality Parts,Customers Priority,Honest Operation,and Considerate Service”,our business mainly focus on the distribution of electronic components. Line cards we deal with include Microchip,ALPS,ROHM,Xilinx,Pulse,ON,Everlight and Freescale. Main products comprise IC,Modules,Potentiometer,IC Socket,Relay,Connector.Our parts cover such applications as commercial,industrial, and automotives areas.

We are looking forward to setting up business relationship with you and hope to provide you with the best service and solution. Let us make a better world for our industry!



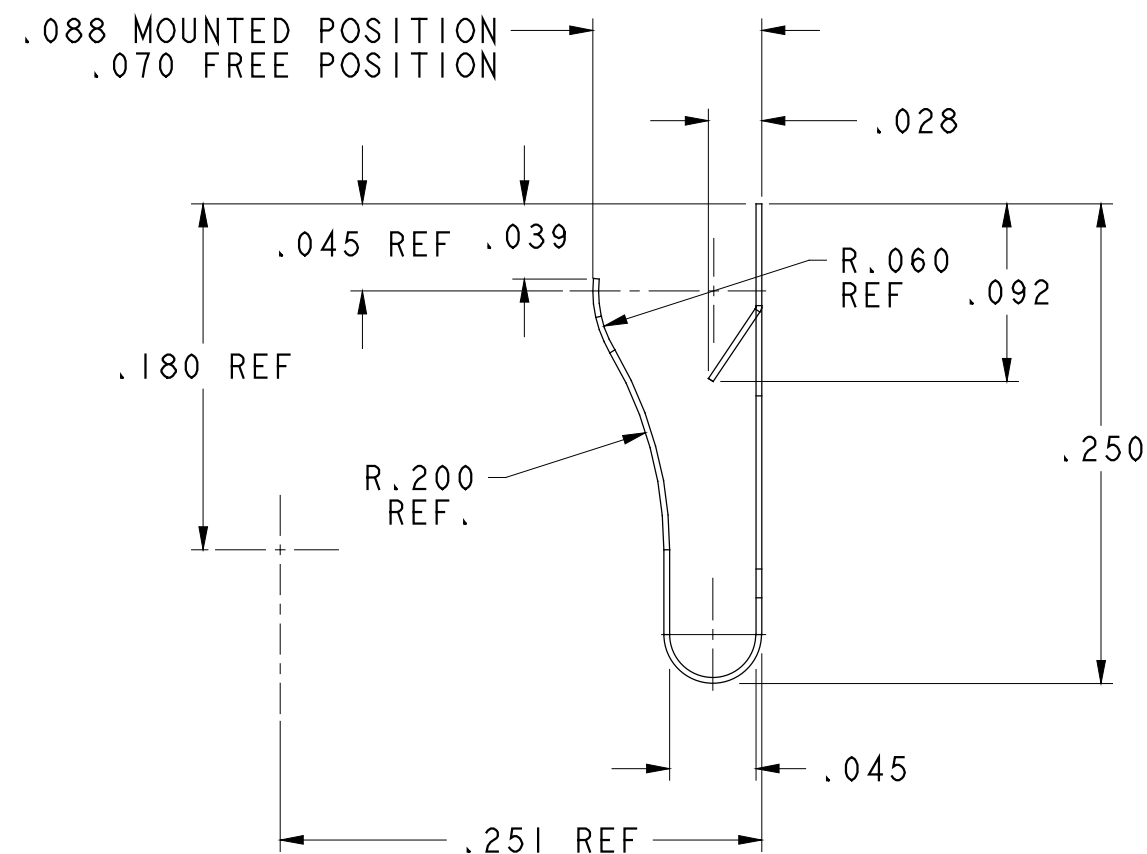
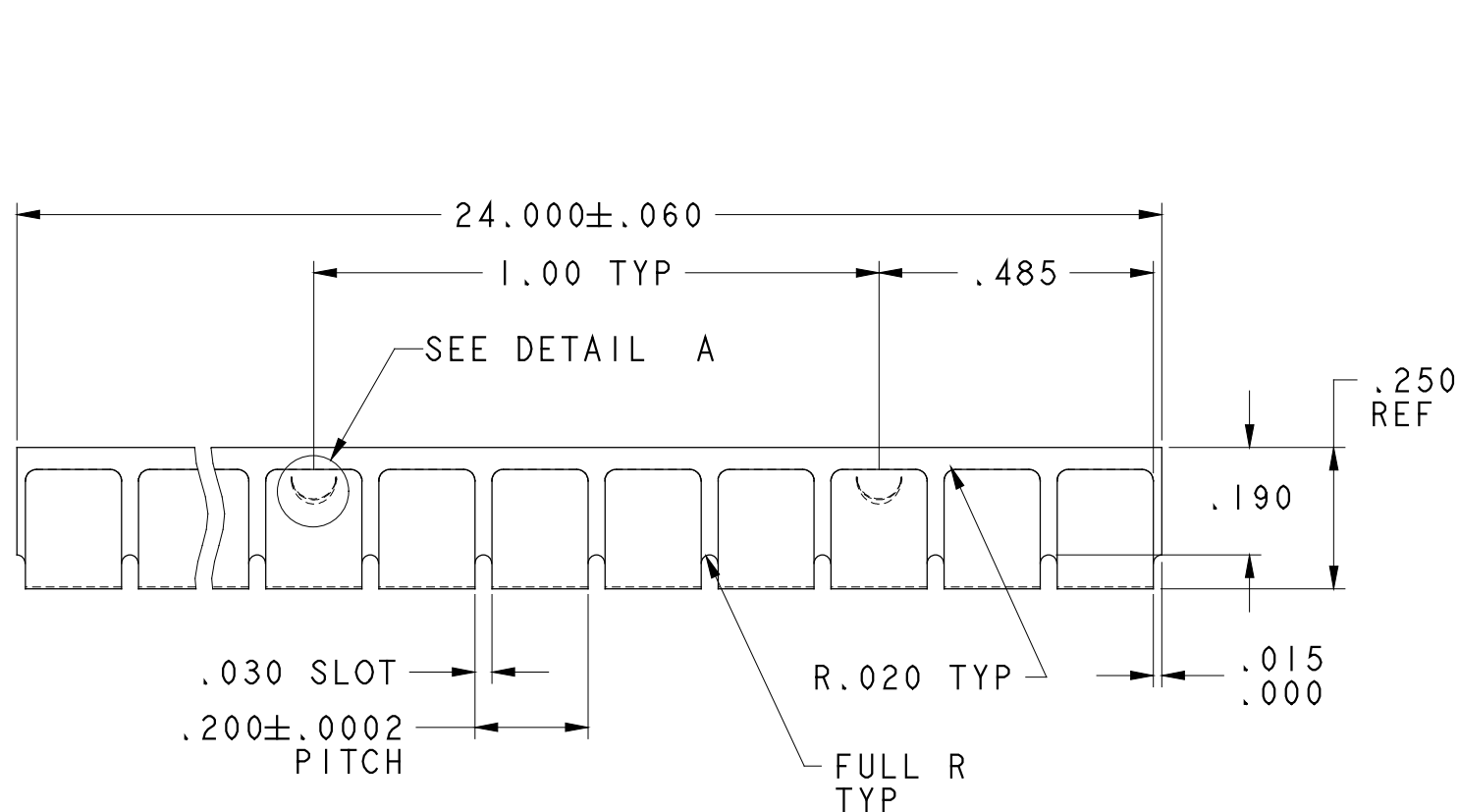
Contact us

Tel: +86-755-8981 8866 Fax: +86-755-8427 6832

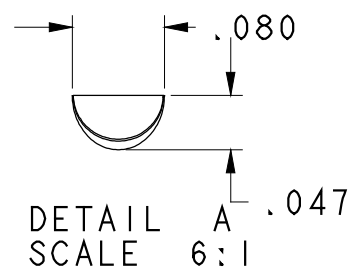
Email & Skype: info@chipsmall.com Web: www.chipsmall.com

Address: A1208, Overseas Decoration Building, #122 Zhenhua RD., Futian, Shenzhen, China





MOUNTED DIMENSIONS
 ON 18 GAGE SHEET METAL
 SCALE 10:1



THIS INFORMATION IS CONFIDENTIAL AND PROPRIETARY TO LAIRD TECHNOLOGIES.
 IT MAY NOT BE DISCLOSED TO ANYONE, OTHER THAN LAIRD TECHNOLOGIES
 PERSONNEL, WITHOUT WRITTEN AUTHORIZATION FROM LAIRD TECHNOLOGIES.

DWG. NO. 0097-0645

MATERIAL: .003 ± .0002 X .600 ± .003 BARE BECU ALLOY 25 ENDURANCE GRADE 1/4 HD	TOLERANCES NOT SHOWN			DRAWN BY: TWG	DATE: 01/25/92
	DECIMAL 2 PL'S ± .01	DECIMAL 3 PL'S ± .005		CHECKED: ES	DATE: 01/28/92
HEAT TREAT: TO DPH 343 MIN USING A 500 GRAM LOAD	ANGULAR ± 3°		APPROVED: EWS	DATE: 01/28/92	
THICKNESS AFTER CLEANING & BEFORE PLATING .00265 MIN.	THIRD ANGLE PROJECTION		MINI CLIP-ON		
FINISH: AS REQUIRED	UNITS: INCH [MM]	SCALE: 3:1	REF. DWG NO.	DWG. NO. 0097-0645	REV 01
CAD MAINTAINED DRAWING. MANUAL CHANGES UNAUTHORIZED.			SHEET 1 OF 1		