



Chipsmall Limited consists of a professional team with an average of over 10 year of expertise in the distribution of electronic components. Based in Hongkong, we have already established firm and mutual-benefit business relationships with customers from,Europe,America and south Asia,supplying obsolete and hard-to-find components to meet their specific needs.

With the principle of "Quality Parts,Customers Priority,Honest Operation,and Considerate Service",our business mainly focus on the distribution of electronic components. Line cards we deal with include Microchip,ALPS,ROHM,Xilinx,Pulse,ON,Everlight and Freescale. Main products comprise IC,Modules,Potentiometer,IC Socket,Relay,Connector.Our parts cover such applications as commercial,industrial, and automotives areas.

We are looking forward to setting up business relationship with you and hope to provide you with the best service and solution. Let us make a better world for our industry!



## Contact us

Tel: +86-755-8981 8866 Fax: +86-755-8427 6832

Email & Skype: info@chipsmall.com Web: www.chipsmall.com

Address: A1208, Overseas Decoration Building, #122 Zhenhua RD., Futian, Shenzhen, China



PART NUMBER	DESCRIPTION
00DF020.ZXF	600V, 20A, DEAD FRONT HOLDER, FRONT TERMINATIONS
00DF020.ZXFB	600V, 20A, DEAD FRONT HOLDER, FRONT/BACK TERMINATIONS
00DF020.ZXB	600V, 20A, DEAD FRONT HOLDER, BACK TERMINATIONS
00DF030.ZXF	600V, 30A, DEAD FRONT HOLDER, FRONT TERMINATIONS
00DF030.ZXFB	600V, 30A, DEAD FRONT HOLDER, FRONT/BACK TERMINATIONS
00DF030.ZXF	600V, 30A, DEAD FRONT HOLDER, BACK TERMINATIONS
00DF060.ZXF	600V, 60A, DEAD FRONT HOLDER, FRONT TERMINATIONS
00DF060.ZXFB	600V, 60A, DEAD FRONT HOLDER, FRONT/BACK TERMINATIONS
00DF060.ZXB	600V, 60A, DEAD FRONT HOLDER, BACK TERMINATIONS
00DF100.ZXF	600V, 100A, DEAD FRONT HOLDER, FRONT TERMINATIONS
00DF100.ZXFB	600V, 100A, DEAD FRONT HOLDER, FRONT/BACK TERMINATIONS
00DF100.ZXB	600V, 100A, DEAD FRONT HOLDER, BACK TERMINATIONS

NOTES:

THESE FUSE BLOCKS ARE FOR CANADIAN MARKET AND ARE GOING TO BE COMPLETELY PRIVATE LABELED WHICH INCLUDES FUSE BLOCK LABELS AND BOXES THROUGH FUSE TEK, AND WAREHOUSED IN TORONTO.

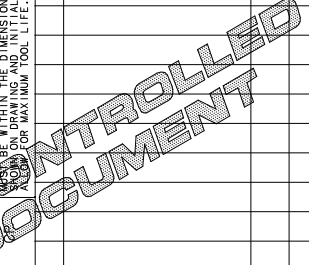
PARTS WILL NEVER BE STOCKED AT LITTELFUSE.

UNLESS OTHERWISE SPECIFIED, DIMENSIONS DO NOT INCLUDE PLATING.

DEFINITIONS:  
 DENOTES CRITICAL CHARACTERISTICS.  
 DENOTES CPK DIMENSIONS - MINIMUM CPK VALUE

DENOTES A CHARACTERISTIC THAT PROVIDES AN INDICATION OF THE TOLERANCE TO BE MAINTAINED FOR MEASUREMENT OF THIS DIMENSION TO BE INSPECTED IN ACCORDANCE WITH THE LITTELFUSE INSPECTION INSTRUCTIONS.

DEFINITIONS:  
 DENOTES CP DIMENSIONS - MINIMUM CP VALUE  
 DENOTES A CHARACTERISTIC THAT PROVIDES AN INDICATION OF THE TOLERANCE TO BE MAINTAINED FOR MEASUREMENT OF THIS DIMENSION TO BE INSPECTED IN ACCORDANCE WITH THE LITTELFUSE INSPECTION INSTRUCTIONS.



NO	COMPONENT NO	DESCRIPTION	QTY/M	U/M	BILL OF MATERIAL			
					MATL SPEC	FINISH		
					COPIES TO	DATE	SCALE	
1	9	18			DRW	PJM	06/24/02	
2	10	19			CHK			SUPER DRW
3	12	20			APPD			RAW STK WT
4	13	21						LBS/M
5	14	23						TOLERANCE UNLESS OTHERWISE SPECIFIED
6	15	33						TWO PLACE DEC ±.01
7	16	43						THREE PLACE DEC ±.005
8	17	53						ANGULAR ±1°
					TITLE			
					600V DEAD FRONT HOLDER			
					DES PLAINES, ILLINOIS 60016 REVISION NO. B DRAWING NO. 00DF000.Z SERIES SFR15 FINAL			

LTR	REVISION	CHK	APD
B	82256D-REVISE & REDRAW IN NEW FORMAT 06/24/02 PJM		