



Chipsmall Limited consists of a professional team with an average of over 10 year of expertise in the distribution of electronic components. Based in Hongkong, we have already established firm and mutual-benefit business relationships with customers from,Europe,America and south Asia,supplying obsolete and hard-to-find components to meet their specific needs.

With the principle of “Quality Parts,Customers Priority,Honest Operation,and Considerate Service”,our business mainly focus on the distribution of electronic components. Line cards we deal with include Microchip,ALPS,ROHM,Xilinx,Pulse,ON,Everlight and Freescale. Main products comprise IC,Modules,Potentiometer,IC Socket,Relay,Connector.Our parts cover such applications as commercial,industrial, and automotives areas.

We are looking forward to setting up business relationship with you and hope to provide you with the best service and solution. Let us make a better world for our industry!



## Contact us

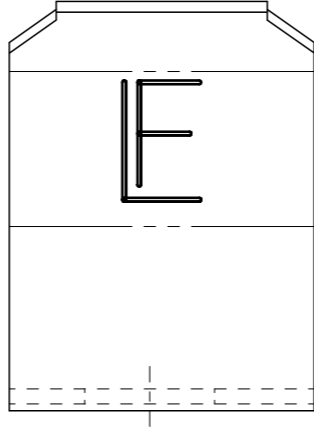
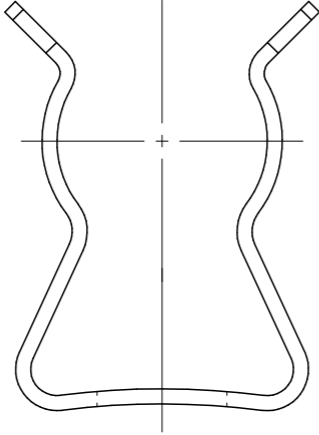
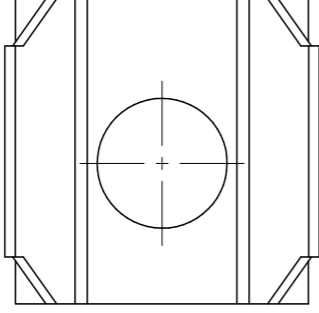
Tel: +86-755-8981 8866 Fax: +86-755-8427 6832

Email & Skype: info@chipsmall.com Web: www.chipsmall.com

Address: A1208, Overseas Decoration Building, #122 Zhenhua RD., Futian, Shenzhen, China



MATERIAL	PLATING	NOM. PLATING WT. (GRS)	VENDOR
BRASS	NICKEL /COPPER	Ni = .015: Cu = .003	FORMCO



**NOTE:**

FUSE CLIP 104012  
 BRIGHT NICKEL PLATED  
 .0001 MIN.

UNLESS OTHERWISE SPECIFIED, DIMENSIONS DO NOT INCLUDE PLATING.  
 CPK DENOTES CRITICAL CHARACTERISTICS.  
 CPK DENOTES CPK DIMENSIONS, -MINIMUM CPK VALUE  
 (S) DENOTES A CHARACTERISTIC THAT PROVIDES AN INDICATION OF PROCESS PERFORMANCE. PROCEDURE FOR MEASUREMENT AND TRACKING TO BE DEFINED IN ANTELFUSE INSPECTION INSTRUCTIONS.  
 CP DENOTES CP DIMENSIONS, -MINIMUM CP VALUE (MUST BE WITHIN THE DIMENSIONAL LIMITATIONS SHOWN ON DRAWING AND INITIALLY LOCATED TO ALLOW FOR MAXIMUM TOOL LIFE.

2	010104	NICKEL ANODE	.038	LB
1	104012	FUSE CLIP	1000	EA
NO	COMPONENT NO	DESCRIPTION	QTY/M	U/M

**BILL OF MATERIAL**

MATERIAL SPEC		FINISH		SEE NOTE
COPIES TO	DRW	PJM	DATE	08/02/02
1	9	18	SCALE	4:1
2	10	19	CHK	SUPER DRW
3	12	20	APPD	RAW STK WT
4	13	21	TOLERANCE UNLESS OTHERWISE SPECIFIED	
5	14	23	TWO PLACE DEC ±.01	
6	15	33	THREE PLACE DEC ±.005	
7	16	43	ANGULAR ±1°	
8	17	53	TITLE	

LTR	<b>REVISION</b>	CHK	APD
-----	-----------------	-----	-----

D	60909 - REINSTATED 08/02/02 PJM		
F	85400D-ADDED CHART 3/02/07 RP		

FUSE CLIP	
REVISION	DRWG. NO.
E	01040002Z
FINAL	

