



Chipsmall Limited consists of a professional team with an average of over 10 year of expertise in the distribution of electronic components. Based in Hongkong, we have already established firm and mutual-benefit business relationships with customers from,Europe,America and south Asia,supplying obsolete and hard-to-find components to meet their specific needs.

With the principle of “Quality Parts,Customers Priority,Honest Operation,and Considerate Service”,our business mainly focus on the distribution of electronic components. Line cards we deal with include Microchip,ALPS,ROHM,Xilinx,Pulse,ON,Everlight and Freescale. Main products comprise IC,Modules,Potentiometer,IC Socket,Relay,Connector.Our parts cover such applications as commercial,industrial, and automotives areas.

We are looking forward to setting up business relationship with you and hope to provide you with the best service and solution. Let us make a better world for our industry!



## Contact us

Tel: +86-755-8981 8866 Fax: +86-755-8427 6832

Email & Skype: info@chipsmall.com Web: www.chipsmall.com

Address: A1208, Overseas Decoration Building, #122 Zhenhua RD., Futian, Shenzhen, China



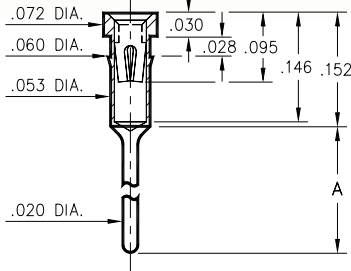
# PIN RECEPTACLES

## FOR .015" - .025" DIAMETER PINS

### 1005/1013/8898

XXXX-0-15-XX-3X-XX-04-0

Press-fit in .057 mounting hole  
Annealed brass shell for auto-clinching \*



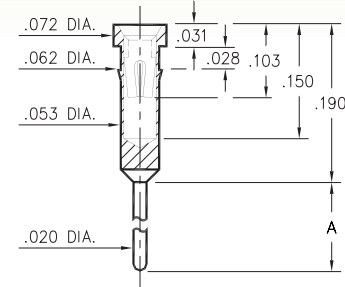
Basic Part Number	Length A
1005-0	.138
1013-0	.165
8898-0	.224

\* NOTE: 8898 is not annealed & not suitable for auto-clinching

### 0145/0146

014X-0-15-XX-30-XX-04-0

Press-fit in .059 mounting hole

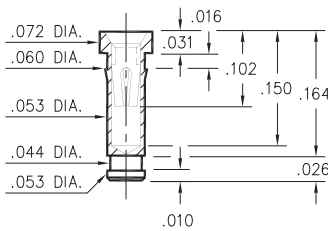


Basic Part Number	Length A
0145-0	.300
0146-0	.410

### 4378

4378-0-15-XX-30-XX-10-0

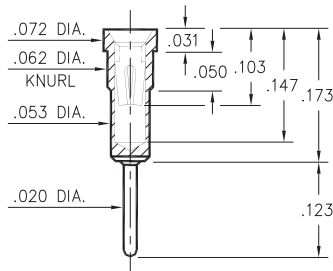
Press-fit in .057 mounting hole



### 0556

0556-0-15-XX-30-XX-04-0

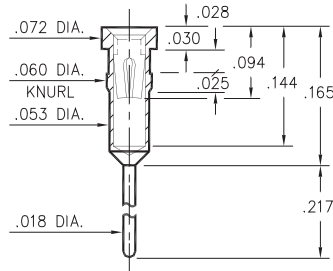
Press-fit in .059 mounting hole



### 1103

1103-0-15-XX-30-XX-04-0

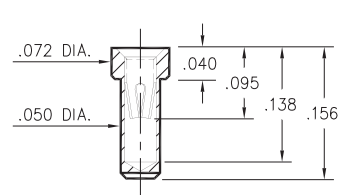
Press-fit in .057 mounting hole



### 9234

9234-0-15-XX-30-XX-10-0

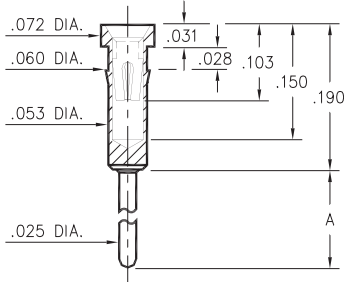
Solder mount in .052 min. mounting hole



### 0136/37/38/39/41/48/52

01XX-0-15-XX-30-XX-04-0

Press-fit in .057 mounting hole

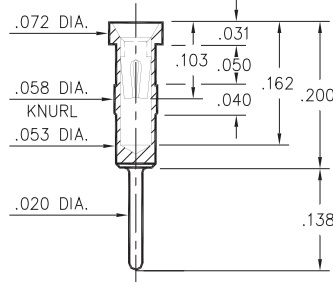


Basic Part Number	Length A
0136-0	1.215
0137-0	.560
0138-0	.210
0139-0	.635
0141-0	.700
0148-0	.455
0152-0	.410

### 0447

0447-0-15-XX-30-XX-04-0

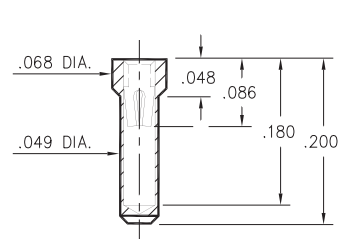
Press-fit in .056 mounting hole



### 5660

5660-0-15-XX-30-XX-10-0

Solder mount in .051 min. mounting hole



#### SPECIFICATIONS:

**Shell Material:** Brass Alloy 360, 1/2 Hard

**Contact Material:** Beryllium Copper Alloy 172, HT

**Dimensions:** Inches

**Tolerances On:** Lengths: ±.005

Diameters: ±.002

Angles: ±2°



**ORDER CODE:** XXXX - X - 15 - XX - XX - XX - XX - 0

**BASIC PART #**

**SPECIFY SHELL FINISH:**

- 01 200 μ" TIN/LEAD OVER NICKEL
- ◆ 80 200 μ" TIN OVER NICKEL (RoHS)
- ◆ 15 10 μ" GOLD OVER NICKEL (RoHS)

**SPECIFY CONTACT FINISH:**

- 02 100 μ" TIN/LEAD OVER NICKEL
- ◆ 84 100 μ" TIN OVER NICKEL (RoHS)
- ◆ 27 30 μ" GOLD OVER NICKEL (RoHS)

**SELECT CONTACT:**

**#30 or #32 CONTACT (DATA ON PAGE 253)**

(For alternate contact choices, see groups B and C on page 248)

