



Chipsmall Limited consists of a professional team with an average of over 10 year of expertise in the distribution of electronic components. Based in Hongkong, we have already established firm and mutual-benefit business relationships with customers from,Europe,America and south Asia,supplying obsolete and hard-to-find components to meet their specific needs.

With the principle of “Quality Parts,Customers Priority,Honest Operation,and Considerate Service”,our business mainly focus on the distribution of electronic components. Line cards we deal with include Microchip,ALPS,ROHM,Xilinx,Pulse,ON,Everlight and Freescale. Main products comprise IC,Modules,Potentiometer,IC Socket,Relay,Connector.Our parts cover such applications as commercial,industrial, and automotives areas.

We are looking forward to setting up business relationship with you and hope to provide you with the best service and solution. Let us make a better world for our industry!



## Contact us

Tel: +86-755-8981 8866 Fax: +86-755-8427 6832

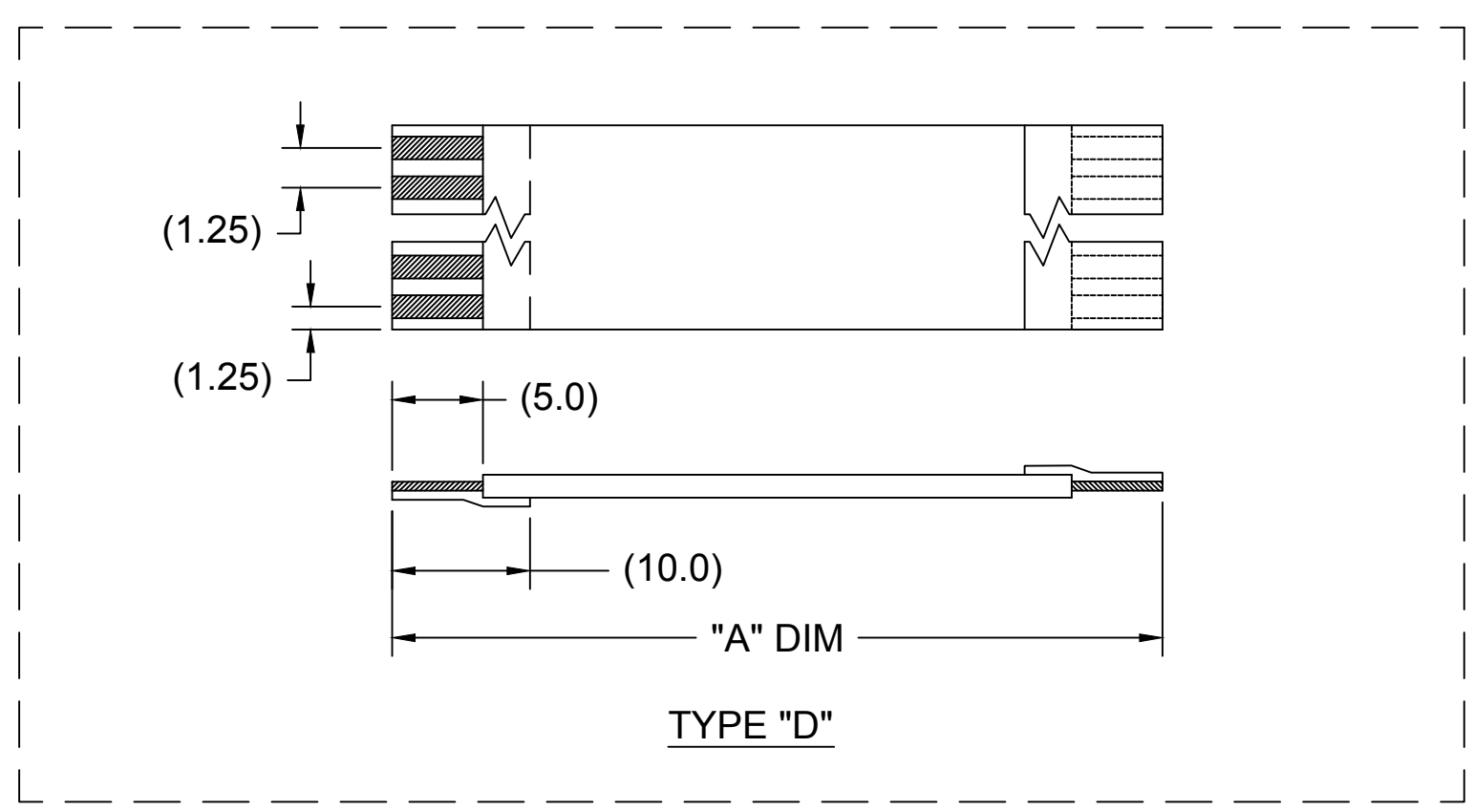
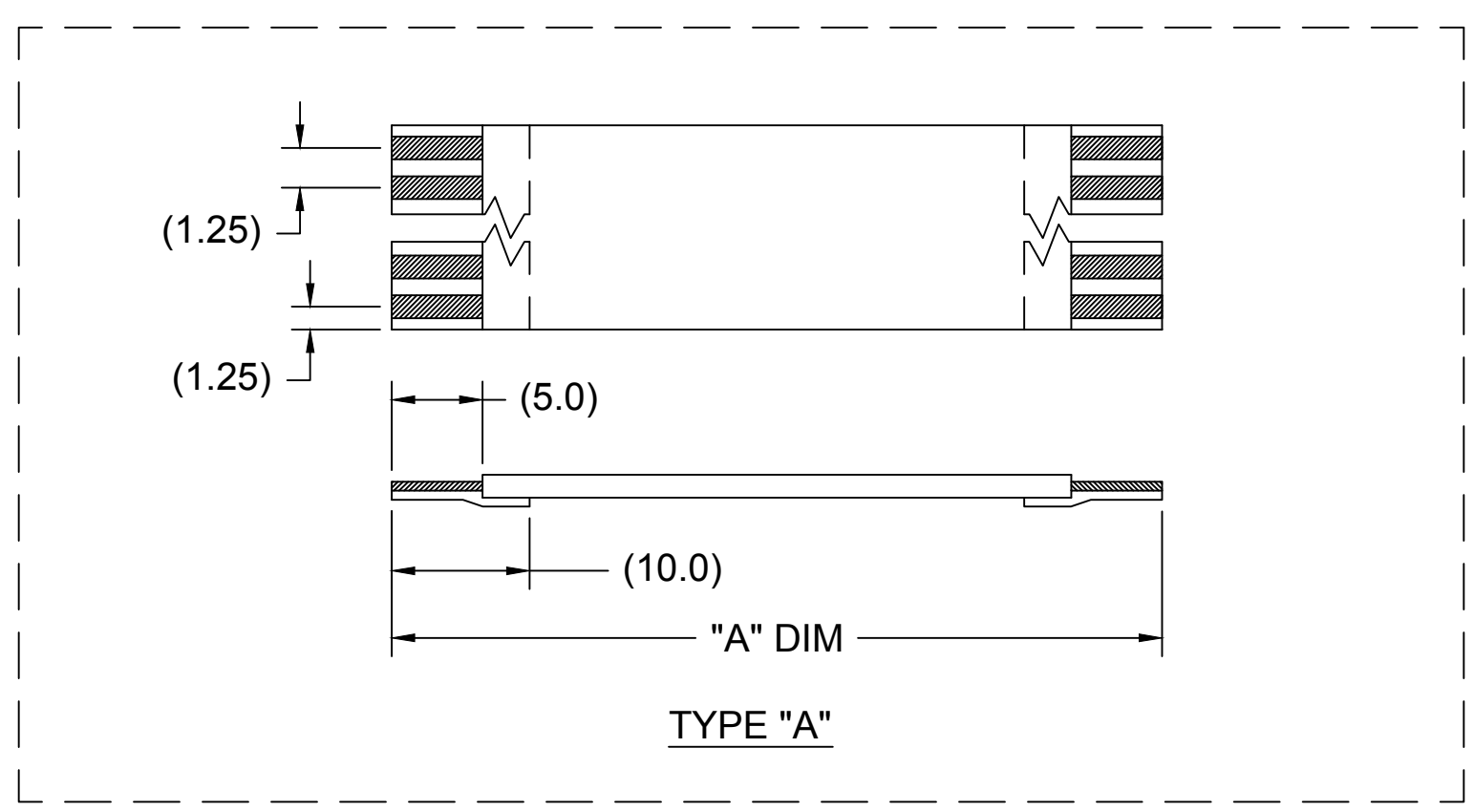
Email & Skype: info@chipsmall.com Web: www.chipsmall.com

Address: A1208, Overseas Decoration Building, #122 Zhenhua RD., Futian, Shenzhen, China



1.25MM CENTER FFC JUMPER CABLE (HIGH TEMPERATURE) CHART

"A" DIM.	1.18 +/- .079 INCHES 30 +/-2.00 MM		2 +/- .079 INCHES 51 +/-2.00 MM		3 +/- .118 INCHES 76 +/-3.00 MM		4 +/- .118 INCHES 102 +/-3.00 MM		5 +/- .157 INCHES 127 +/-4.00 MM		6 +/- .157 INCHES 152 +/-4.00 MM		7 +/- .157 INCHES 178 +/-4.00 MM		8 +/- .157 INCHES 203 +/-4.00 MM		9 +/- .197 INCHES 229 +/-5.00 MM		10 +/- .197 INCHES 254 +/-5.00 MM		12 +/- .197 INCHES 305 +/-5.00 MM	
	STIFFENER	TYPE "A"	TYPE "D"	TYPE "A"	TYPE "D"	TYPE "A"	TYPE "D"	TYPE "A"	TYPE "D"	TYPE "A"	TYPE "D"	TYPE "A"	TYPE "D"	TYPE "A"	TYPE "D"	TYPE "A"	TYPE "D"	TYPE "A"	TYPE "D"	TYPE "A"	TYPE "D"	TYPE "A"
CKTS: 4	152680701	152680700	152680703	152680702	152680705	152680704	152680707	152680706	152680709	152680708	152680711	152680710	152680713	152680712	152680715	152680714	152680717	152680716	152680719	152680718	152680721	152680720
CKTS: 6	152680101	152680102	152680103	152680104	152680105	152680106	152680107	152680108	152680109	152680110	152680111	152680112	152680113	152680114	152680115	152680116	152680117	152680118	152680119	152680120	152680121	152680122
CKTS: 8	152680123	152680124	152680125	152680126	152680127	152680128	152680129	152680130	152680131	152680132	152680133	152680134	152680135	152680136	152680137	152680138	152680139	152680140	152680141	152680142	152680143	152680144
CKTS: 10	152680145	152680146	152680147	152680148	152680149	152680150	152680151	152680152	152680153	152680154	152680155	152680156	152680157	152680158	152680159	152680160	152680161	152680162	152680163	152680164	152680165	152680166
CKTS: 12	152680167	152680168	152680169	152680170	152680171	152680172	152680173	152680174	152680175	152680176	152680177	152680178	152680179	152680180	152680181	152680182	152680183	152680184	152680185	152680186	152680187	152680188
CKTS: 14	152680189	152680190	152680191	152680192	152680193	152680194	152680195	152680196	152680197	152680198	152680199	152680200	152680201	152680202	152680203	152680204	152680205	152680206	152680207	152680208	152680209	152680210
CKTS: 16	152680211	152680212	152680213	152680214	152680215	152680216	152680217	152680218	152680219	152680220	152680221	152680222	152680223	152680224	152680225	152680226	152680227	152680228	152680229	152680230	152680231	152680232
CKTS: 18	152680233	152680234	152680235	152680236	152680237	152680238	152680239	152680240	152680241	152680242	152680243	152680244	152680245	152680246	152680247	152680248	152680249	152680250	152680251	152680252	152680253	152680254
CKTS: 20	152680255	152680256	152680257	152680258	152680259	152680260	152680261	152680262	152680263	152680264	152680265	152680266	152680267	152680268	152680269	152680270	152680271	152680272	152680273	152680274	152680275	152680276
CKTS: 22	152680277	152680278	152680279	152680280	152680281	152680282	152680283	152680284	152680285	152680286	152680287	152680288	152680289	152680290	152680291	152680292	152680293	152680294	152680295	152680296	152680297	152680298
CKTS: 24	152680299	152680300	152680301	152680302	152680303	152680304	152680305	152680306	152680307	152680308	152680309	152680310	152680311	152680312	152680313	152680314	152680315	152680316	152680317	152680318	152680319	152680320
CKTS: 26	152680321	152680322	152680323	152680324	152680325	152680326	152680327	152680328	152680329	152680330	152680331	152680332	152680333	152680334	152680335	152680336	152680337	152680338	152680339	152680340	152680341	152680342
CKTS: 28	152680343	152680344	152680345	152680346	152680347	152680348	152680349	152680350	152680351	152680352	152680353	152680354	152680355	152680356	152680357	152680358	152680359	152680360	152680361	152680362	152680363	152680364
CKTS: 30	152680365	152680366	152680367	152680368	152680369	152680370	152680371	152680372	152680373	152680374	152680375	152680376	152680377	152680378	152680379	152680380	152680381	152680382	152680383	152680384	152680385	152680386
CKTS: 32	152680387	152680388	152680389	152680390	152680391	152680392	152680393	152680394	152680395	152680396	152680397	152680398	152680399	152680400	152680401	152680402	152680403	152680404	152680405	152680406	152680407	152680408
CKTS: 34	152680409	152680410	152680411	152680412	152680413	152680414	152680415	152680416	152680417	152680418	152680419	152680420	152680421	152680422	152680423	152680424	152680425	152680426	152680427	152680428	152680429	152680430
CKTS: 36	152680431	152680432	152680433	152680434	152680435	152680436	152680437	152680438	152680439	152680440	152680441	152680442	152680443	152680444	152680445	152680446	152680447	152680448	152680449	152680450	152680451	152680452
CKTS: 38	152680453	152680454	152680455	152680456	152680457	152680458	152680459	152680460	152680461	152680462	152680463	152680464	152680465	152680466	152680467	152680468	152680469	152680470	152680471	152680472	152680473	152680474
CKTS: 40	152680475	152680476	152680477	152680478	152680479	152680480	152680481	152680482	152680483	152680484	152680485	152680486	152680487	152680488	152680489	152680490	152680491	152680492	152680493	152680494	152680495	152680496

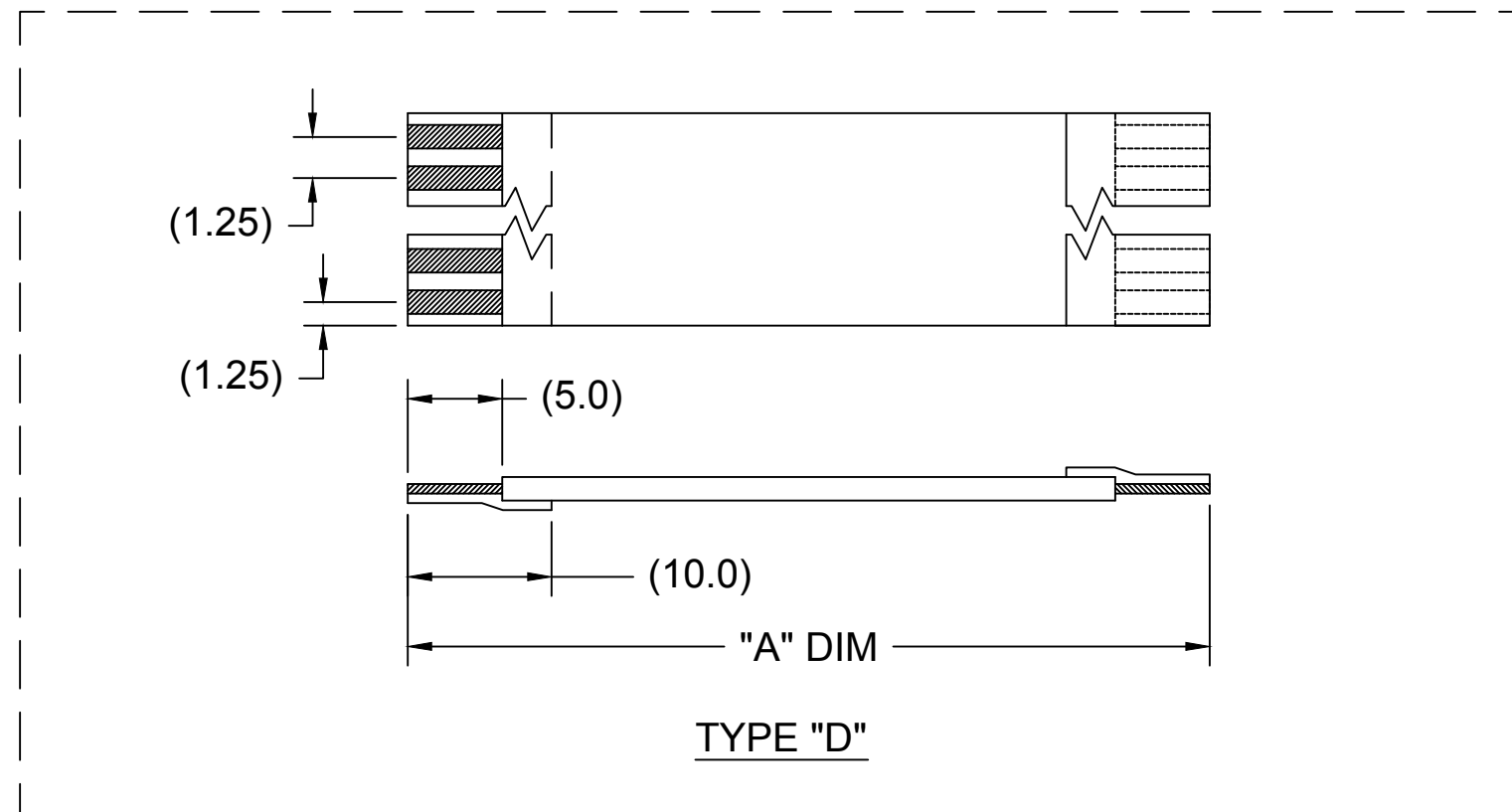
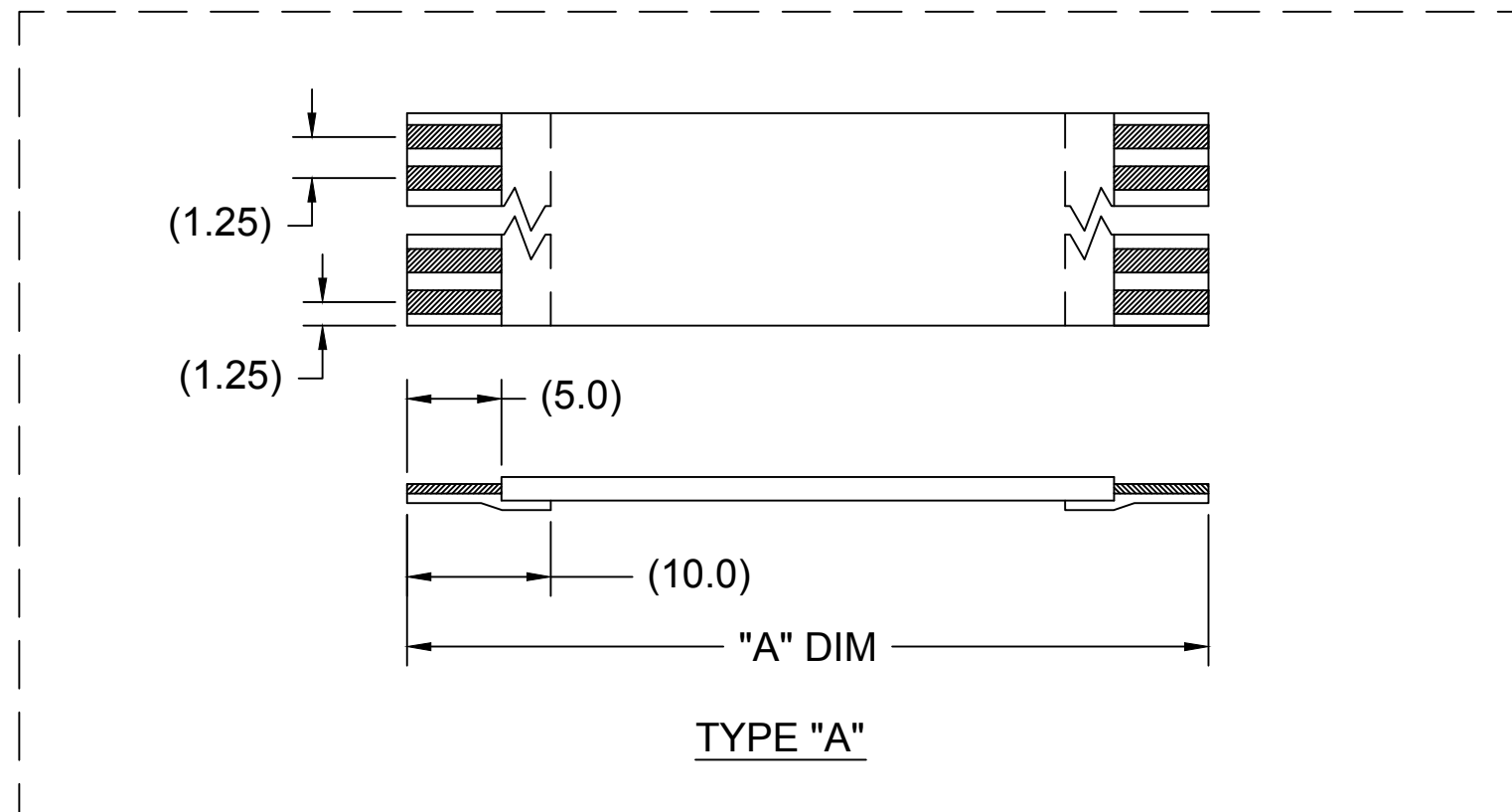


**NOTES:**  
 1. NO PRINTING ON JUMPER CABLE UNLESS OTHERWISE SPECIFIED. IF PRINTING IS REQUIRED, THEN IT WOULD BE CONSIDERED A SPECIAL JUMPER CABLE.

CHANGED LENGTH OF EXPOSED CONTACTS AND STIFFENER EC NO.: USW2011-0133 DRWN: JLW 2011/03/03 RELEASED	EC NO.: USW2011-0065 DRWN: JLW 2010/09/30	QUALITY SYMBOL	GENERAL TOLERANCES (UNLESS SPECIFIED)	DIMENSION STYLE	SCALE	DESIGN UNITS	THIRD ANGLE PROJECTION
		DESCRIPTION					
2	1	▽=0 C=0	mm INCH	MM	---	METRIC	
			4 PLACES ±--- ±---	DRAWN BY	DATE	TITLE	1.25MM CENTER FFC JUMPER CABLE
			3 PLACES ±--- ±---	CHECKED BY	DATE		
			2 PLACES ±--- ±---	APPROVED BY	DATE		MOLEX INCORPORATED
			1 PLACE ±--- ±---	DRASSMUSS	2010/11/17		
			ANGULAR ±1/2°	MATERIAL NO.	DOCUMENT NO.		SHEET NO.
			DRAFT WHERE APPLICABLE MUST REMAIN WITHIN DIMENSIONS	SEE CHART			1 OF 2
				SIZE C	THIS DRAWING CONTAINS INFORMATION THAT IS PROPRIETARY TO MOLEX INCORPORATED AND SHOULD NOT BE USED WITHOUT WRITTEN PERMISSION		

1.25MM CENTER FFC JUMPER CABLE (HIGH TEMPERATURE) CHART

"A" DIM.	1.18 +/- .079 INCHES 30 +/-2.00 MM		2 +/- .079 INCHES 51 +/-2.00 MM		3 +/- .118 INCHES 76 +/-3.00 MM		4 +/- .118 INCHES 102 +/-3.00 MM		5 +/- .157 INCHES 127 +/-4.00 MM		6 +/- .157 INCHES 152 +/-4.00 MM		7 +/- .157 INCHES 178 +/-4.00 MM		8 +/- .157 INCHES 203 +/-4.00 MM		9 +/- .197 INCHES 229 +/-5.00 MM		10 +/- .197 INCHES 254 +/-5.00 MM		12 +/- .197 INCHES 305 +/-5.00 MM	
STIFFENER	TYPE "A"	TYPE "D"	TYPE "A"	TYPE "D"	TYPE "A"	TYPE "D"	TYPE "A"	TYPE "D"	TYPE "A"	TYPE "D"	TYPE "A"	TYPE "D"	TYPE "A"	TYPE "D"	TYPE "A"	TYPE "D"	TYPE "A"	TYPE "D"	TYPE "A"	TYPE "D"	TYPE "A"	TYPE "D"
CKTS: 5	152680723	152680722	152680725	152680724	152680727	152680726	152680729	152680728	152680731	152680730	152680733	152680732	152680735	152680734	152680737	152680736	152680739	152680738	152680741	152680740	152680743	152680742
CKTS: 7	152680745	152680744	152680747	152680746	152680749	152680748	152680751	152680750	152680753	152680752	152680755	152680754	152680757	152680756	152680759	152680758	152680761	152680760	152680763	152680762	152680765	152680764
CKTS: 9	152680767	152680766	152680769	152680768	152680771	152680770	152680773	152680772	152680775	152680774	152680777	152680776	152680779	152680778	152680781	152680780	152680783	152680782	152680785	152680784	152680787	152680786
CKTS: 11	152680789	152680788	152680791	152680790	152680793	152680792	152680795	152680794	152680797	152680796	152680799	152680798	152680801	152680800	152680803	152680802	152680805	152680804	152680807	152680806	152680809	152680808
CKTS: 13	152680811	152680810	152680813	152680812	152680815	152680814	152680817	152680816	152680819	152680818	152680821	152680820	152680823	152680822	152680825	152680824	152680827	152680826	152680829	152680828	152680831	152680830
CKTS: 15	152680833	152680832	152680835	152680834	152680837	152680836	152680839	152680838	152680841	152680840	152680843	152680842	152680845	152680844	152680847	152680846	152680849	152680848	152680851	152680850	152680853	152680852
CKTS: 17	152680855	152680854	152680857	152680856	152680859	152680858	152680861	152680860	152680863	152680862	152680865	152680864	152680867	152680866	152680869	152680868	152680871	152680870	152680873	152680872	152680875	152680874
CKTS: 19	152680877	152680876	152680879	152680878	152680881	152680880	152680883	152680882	152680885	152680884	152680887	152680886	152680889	152680888	152680891	152680890	152680893	152680892	152680895	152680894	152680897	152680896
CKTS: 21	152680899	152680898	152680901	152680900	152680903	152680902	152680905	152680904	152680907	152680906	152680909	152680908	152680911	152680910	152680913	152680912	152680915	152680914	152680917	152680916	152680919	152680918
CKTS: 23	152680921	152680920	152680923	152680922	152680925	152680924	152680927	152680926	152680929	152680928	152680931	152680930	152680933	152680932	152680935	152680934	152680937	152680936	152680939	152680938	152680941	152680940
CKTS: 25	152680943	152680942	152680945	152680944	152680947	152680946	152680949	152680948	152680951	152680950	152680953	152680952	152680955	152680954	152680957	152680956	152680959	152680958	152680961	152680960	152680963	152680962
CKTS: 27	152680965	152680964	152680967	152680966	152680969	152680968	152680971	152680970	152680973	152680972	152680975	152680974	152680977	152680976	152680979	152680978	152680981	152680980	152680983	152680982	152680985	152680984
CKTS: 29	152680987	152680986	152680989	152680988	152680991	152680990	152680993	152680992	152680995	152680994	152680997	152680996	152680999	152680998	152681001	152681000	152681003	152681002	152681005	152681004	152681007	152681006
CKTS: 31	152681009	152681008	152681011	152681010	152681013	152681012	152681015	152681014	152681017	152681016	152681019	152681018	152681021	152681020	152681023	152681022	152681025	152681024	152681027	152681026	152681029	152681028
CKTS: 33	152681031	152681030	152681033	152681032	152681035	152681034	152681037	152681036	152681039	152681038	152681041	152681040	152681043	152681042	152681045	152681044	152681047	152681046	152681049	152681048	152681051	152681050
CKTS: 35	152681053	152681052	152681055	152681054	152681057	152681056	152681059	152681058	152681061	152681060	152681063	152681062	152681065	152681064	152681067	152681066	152681069	152681068	152681071	152681070	152681073	152681072
CKTS: 37	152681075	152681074	152681077	152681076	152681079	152681078	152681081	152681080	152681083	152681082	152681085	152681084	152681087	152681086	152681089	152681088	152681091	152681090	152681093	152681092	152681095	152681094
CKTS: 39	152681097	152681096	152681099	152681098	152681101	152681100	152681103	152681102	152681105	152681104	152681107	152681106	152681109	152681108	152681111	152681110	152681113	152681112	152681115	152681114	152681117	152681116
CKTS: 40	152680475	152680476	152680477	152680478	152680479	152680480	152680481	152680482	152680483	152680484	152680485	152680486	152680487	152680488	152680489	152680490	152680491	152680492	152680493	152680494	152680495	152680496



**NOTES:**  
 1. NO PRINTING ON JUMPER CABLE UNLESS OTHERWISE SPECIFIED. IF PRINTING IS REQUIRED, THEN IT WOULD BE CONSIDERED A SPECIAL JUMPER CABLE.

SEE SHEET 1	EC NO: DRWN:	REV	QUALITY SYMBOL	GENERAL TOLERANCES (UNLESS SPECIFIED)		DIMENSION STYLE		SCALE	DESIGN UNITS	THIRD ANGLE PROJECTION
			▼=0	MM		---	METRIC			
			∇=0	mm	INCH	DRAWN BY	DATE	TITLE		
				4 PLACES	±---	±---	----	----	1.25MM CENTER FFC JUMPER CABLE	
				3 PLACES	±---	±---	----	----		
	2 PLACES	±---	±---	----	----					
	1 PLACE	±---	±---	----	----					
			ANGULAR ±1/2°		APPROVED BY	DATE	Molex MOLEX INCORPORATED			
			DRAFT WHERE APPLICABLE MUST REMAIN WITHIN DIMENSIONS		DRASMUSS 2010/11/17		DOCUMENT NO.	SD-15268-001		SHEET NO.
2					SEE CHART				2 OF 2	
					SIZE	THIS DRAWING CONTAINS INFORMATION THAT IS PROPRIETARY TO MOLEX INCORPORATED AND SHOULD NOT BE USED WITHOUT WRITTEN PERMISSION				