



Chipsmall Limited consists of a professional team with an average of over 10 year of expertise in the distribution of electronic components. Based in Hongkong, we have already established firm and mutual-benefit business relationships with customers from,Europe,America and south Asia,supplying obsolete and hard-to-find components to meet their specific needs.

With the principle of “Quality Parts,Customers Priority,Honest Operation,and Considerate Service”,our business mainly focus on the distribution of electronic components. Line cards we deal with include Microchip,ALPS,ROHM,Xilinx,Pulse,ON,Everlight and Freescale. Main products comprise IC,Modules,Potentiometer,IC Socket,Relay,Connector.Our parts cover such applications as commercial,industrial, and automotives areas.

We are looking forward to setting up business relationship with you and hope to provide you with the best service and solution. Let us make a better world for our industry!



## Contact us

Tel: +86-755-8981 8866 Fax: +86-755-8427 6832

Email & Skype: [info@chipsmall.com](mailto:info@chipsmall.com) Web: [www.chipsmall.com](http://www.chipsmall.com)

Address: A1208, Overseas Decoration Building, #122 Zhenhua RD., Futian, Shenzhen, China



7

6

5

4

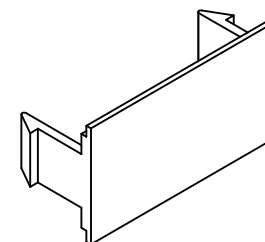
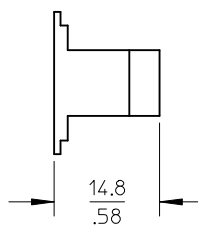
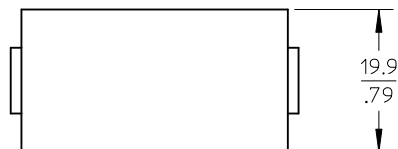
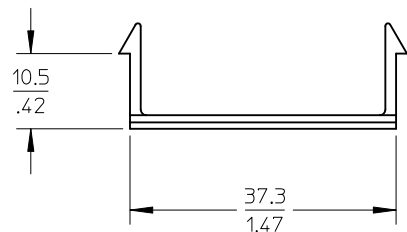
3

2

1

## NOTES:

1. MATERIAL : POLYCARBONATE/ACRYLONITRILE-BUTADIENE-STYRENE (PC/ABS)
2. PACKAGING : 10 NUMBERS OF MODULES ARE PACKED IN A BAG.



ISO VIEW

## PART NO. AND COLOR CHART

MPN NUMBER	SAP NUMBER	COLOR
MSY-00130-01	181170014	ALMOND
MSY-00130-02	181170015	WHITE
MSY-00130-04	181170016	BLACK
MSY-00130-05	181170017	IVORY
MSY-00130-08	181170018	GREY

## ENTER DESCRIPTION

EC NO: MTS2010-0170  
 DRWN:PS03 2010/06/02  
 CHKD:JKUMAR 2010/06/02  
 APPR:JKUMAR 2010/06/16

## DESCRIPTION

## QUALITY SYMBOLS



## GENERAL TOLERANCES (UNLESS SPECIFIED)

	mm	INCH
4 PLACES	± ---	± ---
3 PLACES	± ---	± ---
2 PLACES	± ---	± .020
1 PLACE	± 0.51	± ---

ANGULAR ± ---°

DRAFT WHERE APPLICABLE  
 MUST REMAIN  
 WITHIN DIMENSIONS

DIMENSION STYLE  
MM/IN

DRAWN BY	DATE
PS03	2010/06/02
CHECKED BY	DATE
JKUMAR	2010/06/02
APPROVED BY	DATE
JKUMAR	2010/06/16

MATERIAL NO.

SEE CHART

 SIZE  
 A 4
SCALE  
1:1DESIGN UNITS  
METRIC

 THIRD ANGLE  
 PROJECTION

 TITLE  
 SYNERGY DOUBLE POSITION  
 BLANK-10/BAG

MOLEX INCORPORATED

DOCUMENT NO.

SD-18117-001

SHEET NO.

1 OF 1

6

5

4

3

2

1