



Chipsmall Limited consists of a professional team with an average of over 10 year of expertise in the distribution of electronic components. Based in Hongkong, we have already established firm and mutual-benefit business relationships with customers from,Europe,America and south Asia,supplying obsolete and hard-to-find components to meet their specific needs.

With the principle of “Quality Parts,Customers Priority,Honest Operation,and Considerate Service”,our business mainly focus on the distribution of electronic components. Line cards we deal with include Microchip,ALPS,ROHM,Xilinx,Pulse,ON,Everlight and Freescale. Main products comprise IC,Modules,Potentiometer,IC Socket,Relay,Connector.Our parts cover such applications as commercial,industrial, and automotives areas.

We are looking forward to setting up business relationship with you and hope to provide you with the best service and solution. Let us make a better world for our industry!



Contact us

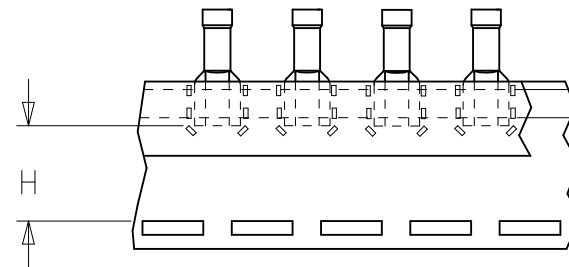
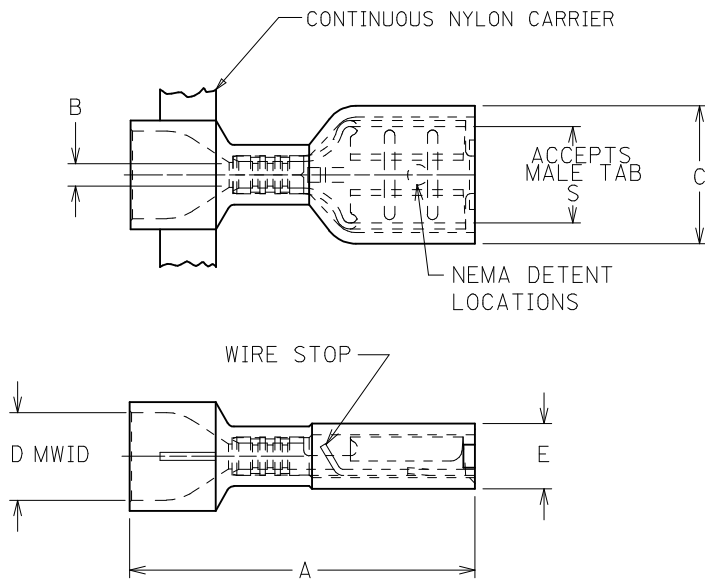
Tel: +86-755-8981 8866 Fax: +86-755-8427 6832

Email & Skype: info@chipsmall.com Web: www.chipsmall.com

Address: A1208, Overseas Decoration Building, #122 Zhenhua RD., Futian, Shenzhen, China



10	9	8	7	6	5	4	3	2	19003				
MATERIAL # LOOSE PCS	MATERIAL # CONTINUOUS	MATERIAL # TAPE MNT	ENGINEERING PART NO.	INS. COLOR	WIRE RANGE AWG	FITS MALE TAB SIZE	STOCK THICK REF	"A" MAX	"B" MIN.	"C" MAX.	"D" MWID	"E" MAX.	"H" ±.02/0.5
190030008	190030009	190030010	AA-2201X	SALMON	22-18	.250x.032 (6.35x0.81)	.016 (0.4)	.94 /23.9	.056/1.42	.380 /9.66	.230 /5.84	.180 /4.58	.56/14.2
NOTE 5	NOTE 5	NOTE 5	AA-2213X	SALMON	22-18	.205x.020 (5.21x0.51)	.016 (0.4)	.86 /21.8	.056/1.42	.316 /8.03	.230 /5.84	.160 /4.07	.60/15.3
NOTE 5	NOTE 5	NOTE 5	AA-2214X	PINK	22-18	.205x.032 (5.21x0.81)	.016 (0.4)	.86 /21.8	.056/1.42	.316 /8.03	.230 /5.84	.160 /4.07	.60/15.3
190030014	190030015	190030016	AA-2202X	SALMON	22-18	.187x.020 (4.75x0.51)	.016 (0.4)	.86 /21.8	.056/1.42	.316 /8.03	.230 /5.84	.160 /4.07	.60/15.3
190030021	190030022	190030023	AA-2203X	PINK	22-18	.187x.032 (4.75x0.81)	.016 (0.4)	.86 /21.8	.056/1.42	.316 /8.03	.230 /5.84	.160 /4.07	.60/15.3
190030027	190030028	190030029	AA-2204X	SALMON	22-18	.110x.020 (2.79x0.51)	.012 (0.3)	.86 /21.8	.056/1.42	.230 /5.85	.230 /5.84	.150 /3.81	.61/15.5
190030033	190030034	190030035	AA-2205X	PINK	22-18	.110x.032 (2.79x0.81)	.012 (0.3)	.86 /21.8	.056/1.42	.230 /5.85	.230 /5.84	.150 /3.81	.61/15.5
190030047	190030048	190030049	BB-2206X	BLUE	16-14	.250x.032 (6.35x0.81)	.016 (0.4)	.94 /23.9	.079/2.00	.380 /9.66	.260 /6.60	.180 /4.58	.56/14.2
NOTE 5	NOTE 5	NOTE 5	BB-2215X	BLUE	16-14	.205x.020 (5.21x0.51)	.016 (0.4)	.86 /21.8	.079/2.00	.316 /8.03	.260 /6.60	.170 /4.32	.60/15.3
NOTE 5	NOTE 5	NOTE 5	BB-2216X	AQUA	16-14	.205x.032 (5.21x0.81)	.016 (0.4)	.86 /21.8	.079/2.00	.316 /8.03	.260 /6.60	.170 /4.32	.60/15.3
190030053	190030054	190030055	BB-2207X	BLUE	16-14	.187x.020 (4.75x0.51)	.016 (0.4)	.86 /21.8	.079/2.00	.316 /8.03	.260 /6.60	.170 /4.32	.60/15.3
190030059	190030060	190030061	BB-2208X	AQUA	16-14	.187x.032 (4.75x0.81)	.016 (0.4)	.86 /21.8	.079/2.00	.316 /8.03	.260 /6.60	.170 /4.32	.60/15.3
190050010	190050014	190050015	C-2265	YELLOW	12-10	.250x.032 (6.35x0.81)	.018 (0.5)	1.04 /26.4	.144 /3.65	.380 /9.66	.275 /6.98	.290 /7.37	.51/12.9



PARTS ON TAPE

CUSTOMER DRAWING

1. MATERIAL: BRASS
2. FINISH: ELECTRO-TIN PLATING
3. INSULATION: NYLON
4. MWID= MAXIMUM WIRE INSULATION DIAMETER
5. CONSULT FACTORY FOR AVAILABILITY
6. PART IS ROHS COMPLIANT.

CORRECTED MAT'L NO EC NO: IFC2016-0481 DRAWN: GROSASO1 2015/09/30 CHKD: JMACNEIL 2015/09/30 APPR: JMACNEIL 2015/10/05	QUALITY SYMBOLS ▽=0 ▽=0	GENERAL TOLERANCES (UNLESS SPECIFIED)		DIMENSION STYLE IN/MM		SCALE ---	DESIGN UNITS INCH	THIRD ANGLE PROJECTION
		mm	INCH	DRAWN BY	DATE	FULLY INSULATED QUICK DISCONNECTS EXPANDED FLARE		
		4 PLACES ± ---	± ---	RCM	1994/06/17			
		3 PLACES ± ---	± ---	CHECKED BY	DATE	MOLEX INCORPORATED		
2 PLACES ± ---	± ---	JM	1994/06/17					
1 PLACE ± ---	± ---	APPROVED BY	DATE	SD-19003-006				
ANGULAR ± ---°		FP	1994/06/17			DOCUMENT NO.	SHEET NO.	
DRAFT WHERE APPLICABLE MUST REMAIN WITHIN DIMENSIONS		SEE CHART		1 OF 1				
THIS DRAWING CONTAINS INFORMATION THAT IS PROPRIETARY TO MOLEX INCORPORATED AND SHOULD NOT BE USED WITHOUT WRITTEN PERMISSION								